



# 104.2MHz LC Band Stop notch Filters

## Part Number: AE104N2239



**ANATECH ELECTRONICS INC**  
RF & Microwave Filters & Products

### Electrical specifications

**Notch Center Frequency :** 104.2MHz  
**Notch Bandwidth Frequency :** 102 MHz to 106 MHz  
**Attenuation at Notch Bandwidth :** 70dB Min.  
**Lower-side Passband :** 47 MHz to 93 MHz  
**Higher-side passband:** 117 MHz to 1000 MHz  
**Passband Insertion Loss:** 3-6 dB Max.  
**Passband Return Loss:** 14dB Min.  
**Impedance:**75 Ohm  
**Power Handling:**1 Watt max

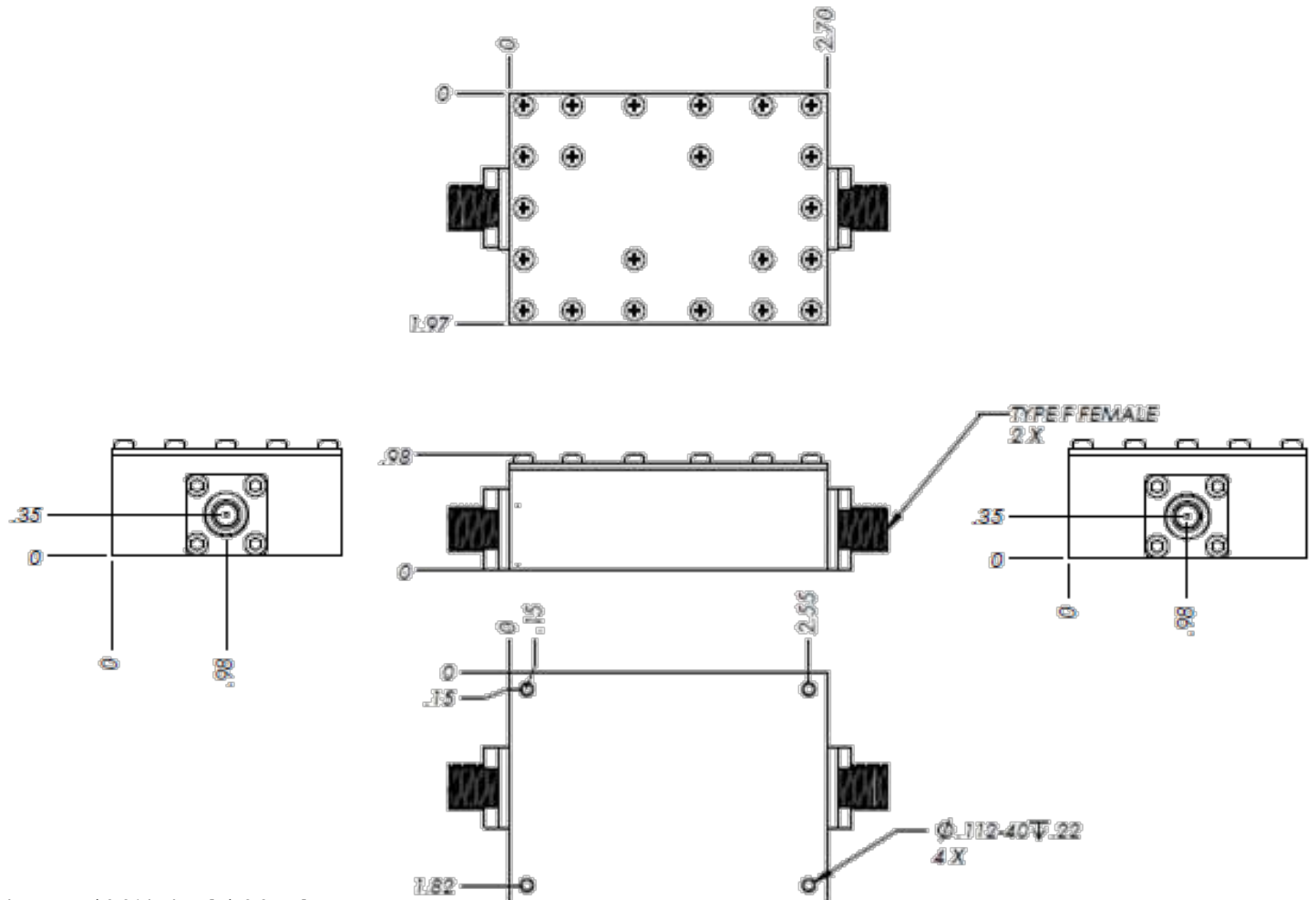
### Mechanical

**Mounting Method:** Thru-Hole  
**Connector Type:** F-type(F)  
**Dimensions:** 2.7 x 1.97 x 0.98 in.

### Environmental

**Operating Temperature:** -15°C to +30°C  
**Storage Temperature:** -30°C to +45°C  
**Shock:** 10 G. 11ms  
**Vibration:** 10 G. 5 to 200Hz

### Outline Drawing:



Tolerance: +/-0.01 inches [ +/- 0.3mm]

Angles: +/- 1 Deg.

\*Tolerance as shown unless otherwise specified in the datasheet electrical specification tables above.

\*When max dimensions are called out the above tolerances do not apply as long as it is under the max call out.