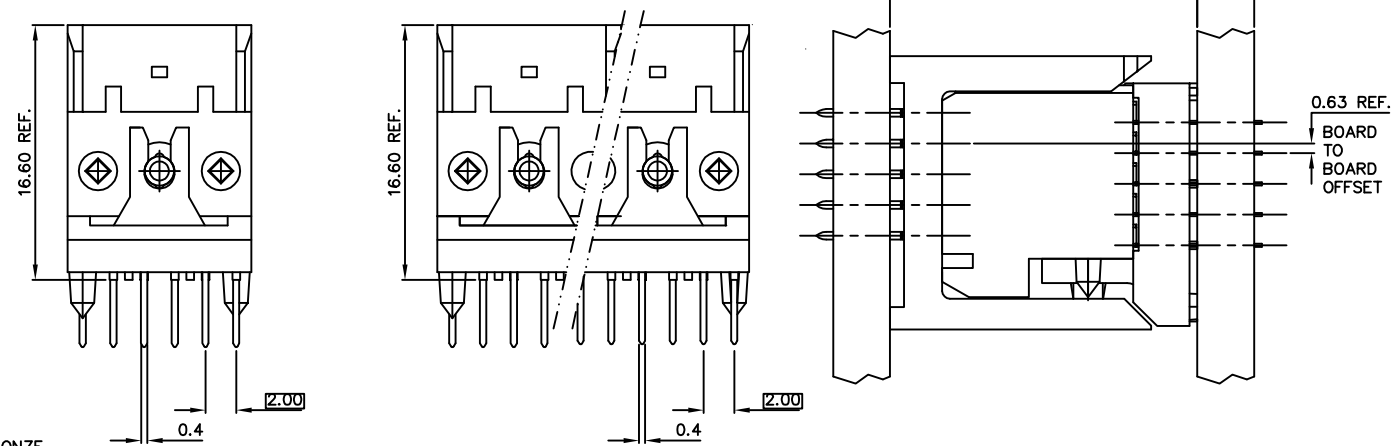
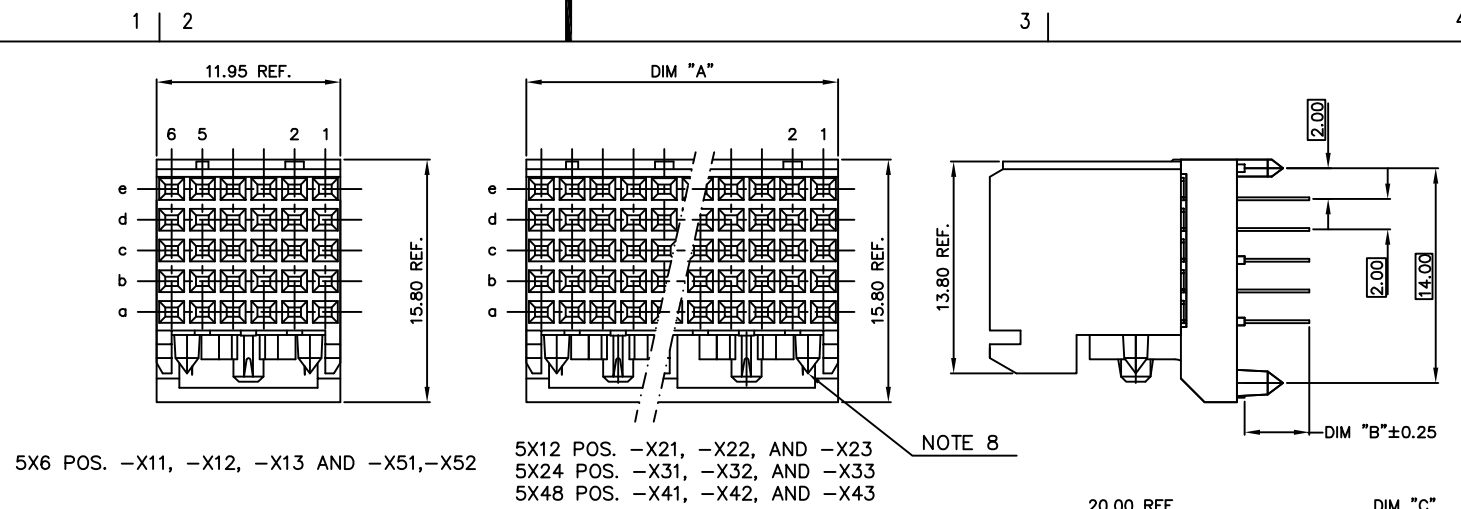


Tous droits strictement réservés. Reproduction ou communication à des tiers interdite sous quelque forme que ce soit sans autorisation écrite du propriétaire. Propriété de c FCI. Droits de reproduction FCI.



All rights strictly reserved. Reproduction or issue to third parties in any form whatever is not permitted without written authority from the proprietor. Property of FCI. Copyright FCI.

PRODUCT NUMBER
94560-YYY
94560-YYLFF



NOTES:

- BODY MATERIAL: LCP 30% GLASS
FLAME RETARDANT ACC. UL 94-VO
- TERMINAL MATERIAL: PHOSPHOR BRONZE
- PLATING ON SOLDERTAILS:
94560-YYY IS SnPb
94560-YYLFF IS Sn (LEAD FREE)
- INDICATED HOLES ARE UNPLATED.
- RECOMMENDED HOLE PATTERN ON SHEET 3.
- DIMS. A, B, AND C ON SHEET 2.
- PRODUCT MARKING: PART NUMBER AND BATCH I.D.
- DIAMOND LOCATION PEG ARE ONLY EXISTED ON THE BOTH SIDES OF PRODUCT.
- THE PRODUCTS WHERE THE PART NUMBER ENDS IN LF MEET THE EUROPEAN UNION DIRECTIVES AND OTHER COUNTRY REGULATIONS AS DESCRIBED IN GS-22-008.
ALL PRODUCTS WILL WITHSTAND EXPOSURE TO 260° FOR 60 SECONDS IN A CONVECTION, INFRA-RED OR VAPOR PHASE REFLOW OVEN.
- FOR LEAD FREE PART NUMBERS, ADD AN 'LF' SUFFIX.
EXAMPLE: 94560-111LF

PLATING CONTACT AREA:	
DASH NR:	PERFORMANCE LEVEL
-1YY/1YYLF	TELCORDIA CO
-2YY/2YYLF	CUSTOMER SPECIAL
-3YY/3YYLF	CUSTOMER SPECIAL

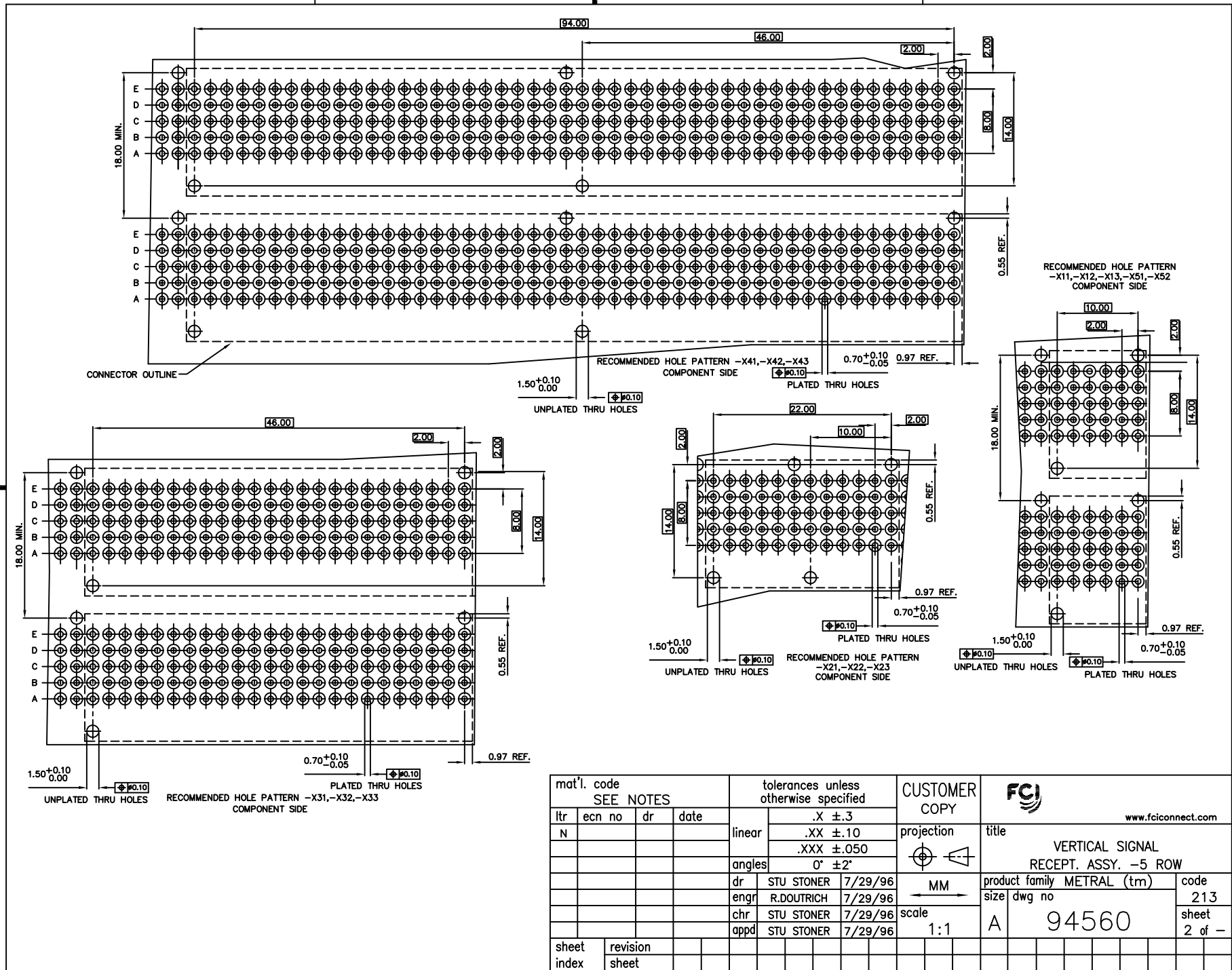
mat'l. code		tolerances unless otherwise specified		CUSTOMER COPY		www.fciconnect.com	
SEE NOTES				.X ±.3		projection	
ltr	ecn no	clr	date	linear	.XX ±.10	title	
K	DG06-0217	CLu	6/01/06		.XXX ±.050	VERTICAL SIGNAL	
L	DG07-0171	Cenh	05/25/07		0° ±2'	RECEPT. ASSY. -5 ROW	
M	DG08-0171	TER	8/18/08	angles		product family METRAL (tm)	
N	DG09-0068	Cenh	06/06/09	dr	STU STONER	7/29/96	code
				engr	R.DOUTRICH	7/29/96	size
H	V03-0722	LP	8/22/03	chr	STU STONER	7/29/96	213
J	V05-0572	TAB	7/25/05	appd	STU STONER	7/29/96	sheet
sheet index	revision	N	N	N	N		1 of 4
	sheet	1	2	3	4		

cage code 22526

Tous droits strictement réservés. Reproduction ou communication à des tiers interdite sous quelque forme que ce soit sans autorisation écrite du propriétaire. Propriété de c FCI. Droits de reproduction FCI.



All rights strictly reserved. Reproduction or issue to third parties in any form whatever is not permitted without written authority from the proprietor. Property of FCI. Copyright FCI.



mat'l. code SEE NOTES		tolerances unless otherwise specified		CUSTOMER COPY		FCI www.fciconnect.com	
ltr	ecn no	dr	date	linear	.X ±.3	projection	title
N				angles	.XX ±.10		VERTICAL SIGNAL RECEPT. ASSY. -5 ROW
					.XXX ±.050		
				dr	STU STONER 7/29/96		product family METRAL (tm)
				engr	R.DOUTRICH 7/29/96		
				chr	STU STONER 7/29/96	scale 1:1	size A
				appd	STU STONER 7/29/96		
sheet index	revision sheet						code 213
							size 2 of -

Tous droits strictement reserves. Reproduction ou communication a des tiers interdite sous quelque forme que ce soit sans autorisation ecrite du proprietaire. Propriete de c FCI. Droits de reproduction FCI.



All rights strictly reserved. Reproduction or issue to third parties in any form whatever is not permitted without written authority from the proprietor. Property of FCI. Copyright FCI.

PRODUCT NUMBER *	DIM "A"	DIM "B"	DIM "C" PCB THK.
94560-X11	-----	2.65	1.6
94560-X21	23.95 REF.	2.65	1.6
94560-X31	47.95 REF.	2.65	1.6
94560-X41	95.95 REF.	2.65	1.6

PRODUCT NUMBER *	DIM "A"	DIM "B"	DIM "C" PCB THK.
94560-X12	-----	3.45	2.4
94560-X22	23.95 REF.	3.45	2.4
94560-X32	47.95 REF.	3.45	2.4
94560-X42	95.95 REF.	3.45	2.4

PRODUCT NUMBER *	DIM "A"	DIM "B"	DIM "C" PCB THK.
94560-X13	-----	4.25	3.2
94560-X23	23.95 REF.	4.25	3.2
94560-X33	47.95 REF.	4.25	3.2
94560-X43	95.95 REF.	4.25	3.2

* SEE NOTE 10

A

A

B

B

mat'l. code SEE NOTES				tolerances unless otherwise specified			CUSTOMER COPY	 www.fciconnect.com	
ltr	ecn no	dr	date	linear	.X ±.3			projection	title
N					.XX ±.10				
				angles	.XXX ±.050				VERTICAL SIGNAL RECEPT. ASSY. -5 ROW
					0° ±2'				
		dr	STU STONER	7/29/96	 MM	product family METRAL (tm)		code	
		enr	R.DOUTRICH	7/29/96		scale	size	dwg no	213
		chr	STU STONER	7/29/96					1:1
		appd	STU STONER	7/29/96					
sheet index	revision sheet								

Tous droits strictement reserves. Reproduction ou communication a des tiers Interdite sous quelque forme que ce soit sans autorisation écrite du propriétaire. Propriete de c FCI. Droits de reproduction FCI.



All rights strictly reserved. Reproduction or issue to third parties in any form whatever is not permitted without written authority from the proprietor. Property of FCI. Copyright FCI.

PRODUCT NUMBER *	DIM "A"	DIM "B"	DIM "C" PCB THK.	CONFIGURATION						
				6	5	4	3	2	1	
94560-X51	-----	4.25	3.2	E	-	X	-	-	-	-
				D	-	X	-	-	-	-
				C	-	-	-	-	-	-
				B	-	X	-	-	-	-
				A	-	X	X	-	-	-
94560-X52	-----	2.65	1.6	E	-	X	-	X	-	X
				D	-	X	-	X	-	X
				C	-	X	-	X	-	X
				B	-	X	-	X	-	X
				A	-	X	-	X	-	X

* SEE NOTE 10

(-) REPRESENTS AN EMPTY POSITION
(X) REPRESENTS A LOADED POSITION

mat'l. code SEE NOTES				tolerances unless otherwise specified			CUSTOMER COPY		 www.fciconnect.com	
ltr	ecn no	dr	date	linear	.X ±.3		projection	 title VERTICAL SIGNAL RECEPT. ASSY. -5 ROW		
N					.XX ±.10					
				angles	0° ±2'		 MM	product family METRAL (tm) code size dwg no 213		
				dr	STU STONER	7/29/96				
				enr	R.DOUTRICH	7/29/96	scale 1:1	A 94560		sheet 4 of -
				chr	STU STONER	7/29/96				
				appd	STU STONER	7/29/96				
sheet index	revision sheet									

cage code
22526

ACAD

PDM: Rev:N

STATUS: Released

Printed: May 16, 2011