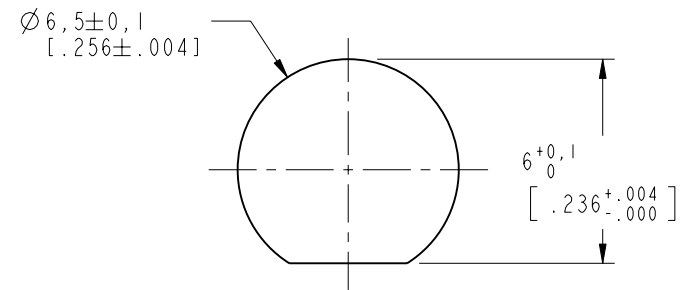


NOTES:

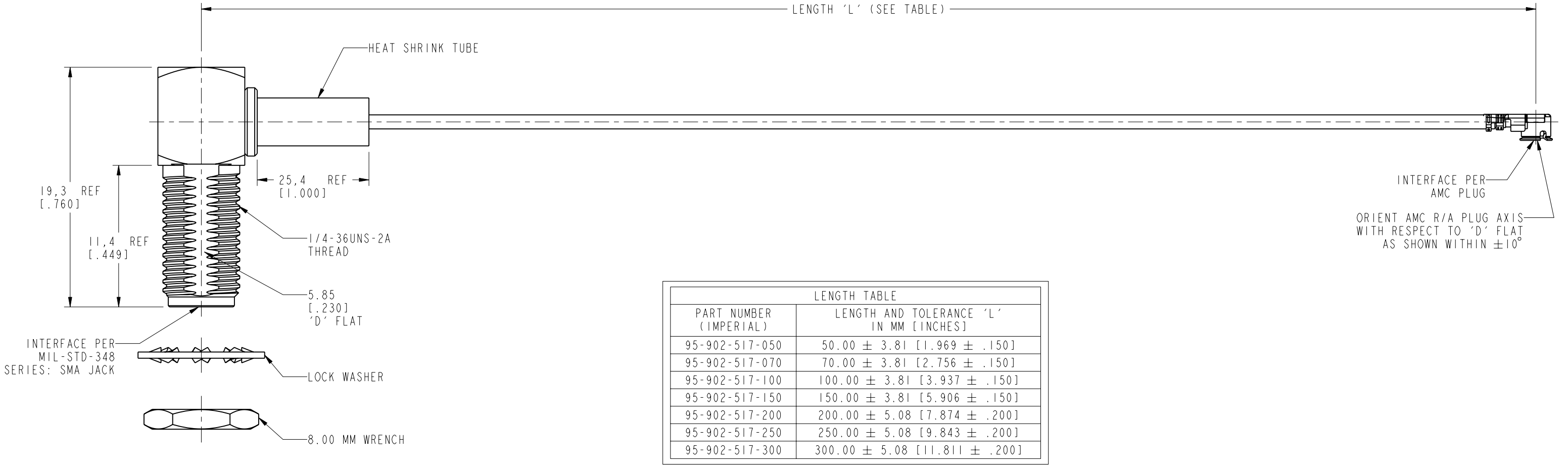
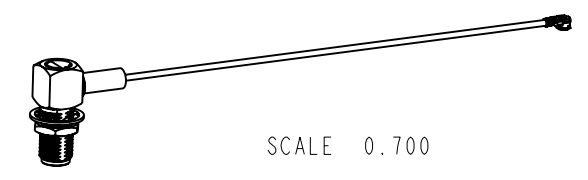
1. MATERIALS AND FINISHES:
 SMA RA BHD JACK - BRASS, GOLD PLATING
 AMC RA PLUG:
 HOUSING - PBT, BLACK
 CONTACT & GROUND CONTACT - PHOSPHOR BRONZE, GOLD PLATING
 CABLE - 1.32 MM CABLE
2. ELECTRICAL:
 A. IMPEDANCE: 50 OHM
3. PACKAGING:
 A. QUANTITY: SINGLE PACK
 B. MARKING: BAG TO BE MARKED
 "AMPHENOL RF, 95-902-517-XXX AND DATE CODE"

THIRD ANGLE PROJ.

REV		DESCRIPTION	DATE	ECN	APPR
A		RELEASE TO MFG.	12-Oct-19	13128	SKP



RECOMMENDED MOUNTING HOLE DIMENSIONS



LENGTH TABLE	
PART NUMBER (IMPERIAL)	LENGTH AND TOLERANCE 'L' IN MM [INCHES]
95-902-517-050	50.00 ± 3.81 [1.969 ± .150]
95-902-517-070	70.00 ± 3.81 [2.756 ± .150]
95-902-517-100	100.00 ± 3.81 [3.937 ± .150]
95-902-517-150	150.00 ± 3.81 [5.906 ± .150]
95-902-517-200	200.00 ± 5.08 [7.874 ± .200]
95-902-517-250	250.00 ± 5.08 [9.843 ± .200]
95-902-517-300	300.00 ± 5.08 [11.811 ± .200]

DESIGN REQUIREMENTS:

<input checked="" type="checkbox"/> FREQUENCY: DC - 6 GHz	<input checked="" type="checkbox"/> CONTINUITY
<input type="checkbox"/> VSWR: ---- MAX.	<input checked="" type="checkbox"/> HI-POT: 200 VRMS
<input type="checkbox"/> INS. LOSS: ---- dB MAX.	<input type="checkbox"/> OTHER

CUSTOMER OUTLINE DRAWING
 ALL OTHER SHEETS ARE FOR INTERNAL USE ONLY

UNLESS OTHERWISE SPECIFIED, DIMENSIONS ARE IN METRIC AND TOLERANCES ARE: <math><0.5\text{mm}</math> $0.5 - 6\text{mm}$ $6 - 30\text{mm}$ $30 - 120\text{mm}$ ANGLES ± 0.05mm ±0.1mm ±0.2mm ± 0.3mm ±1°	MATERIAL	DRAWN	DATE	TITLE		Amphenol RF www.amphenolrf.com	
	SEE NOTES	W. ZENG	12-Oct-19	SMA RA BHD JACK TO AMC RA PLUG USING 1.32 MM CABLE VARIOUS LENGTH			
NOTICE - These drawings, specifications, or other data (1) are, and remain the property of Amphenol corp. (2) must be returned upon request; and (3) are confidential and not to be disclosed to any person other than those to whom they are given by Amphenol Corp. the furnishing of these drawings, specifications, or other data by Amphenol Corp., or to any other person to anyone for any purpose is not to be regarded by implication or otherwise in any manner licensing, granting rights to permitting such holder or any other person to manufacture, use or sell any product, process or design, patented or otherwise, that may in any way be related to or disclosed by said drawings, specifications, or other data.	REFERENCE	ENGINEER	DATE	SCALE: 3.3:1.0 SHEET 2 OF 2		DRAWING NO. 95-902-517-XXX	
	EAR# 9393	M. ZHANG	15-Oct-19	DWG SIZE		ITEM NO. 95-902-517-XXX	
	REF:	APPROVED	S. HSIEH	DATE	B	A	PART NO. 95-902-517-XXX
	CONFIGURATION LEVEL: In Work	FINISH	CAD FILE				