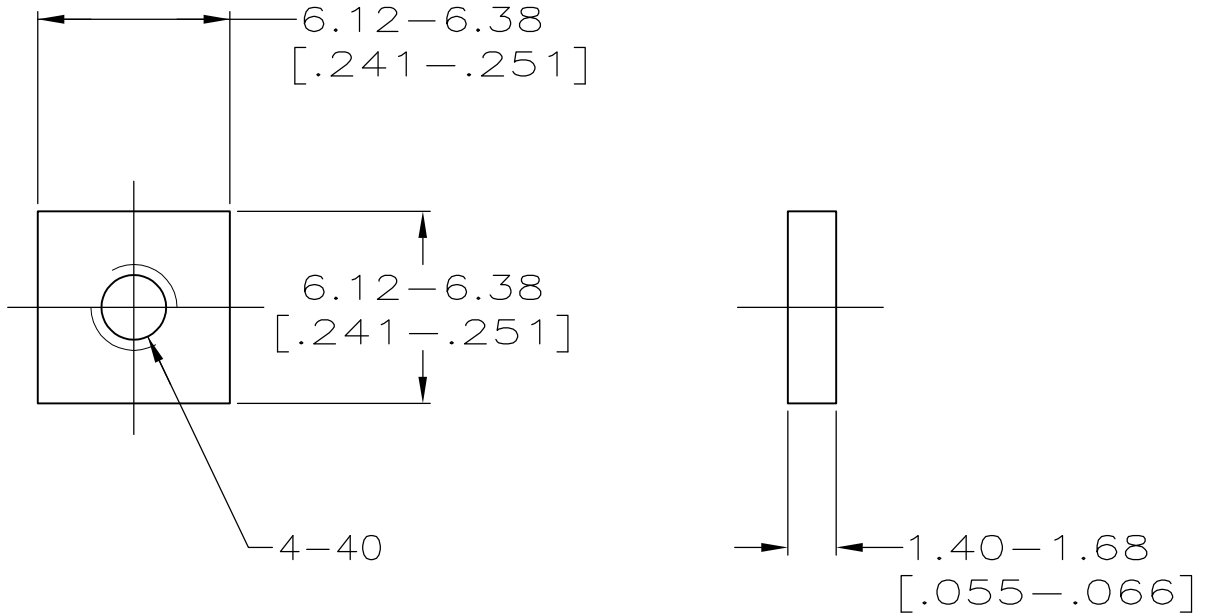


| REVISIONS | | | | |
|-----------|-----|---------------------------|-----------|------|
| P | LTR | DESCRIPTION | DATE | APVD |
| | A | REVISED PER ECO-16-010410 | 29JUL2016 | DG |



- ① ZINC PLATED .000200-.000400 THICK, YELLOW CHROMATE COATING.
- ② ZINC PLATED .000200-.000400 THICK, CLEAR CHROMATE COATING.

| | |
|--------|-----------|
| ② | 5207954-5 |
| ① | 5207954-2 |
| FINISH | PART NO |

THIS DRAWING IS UNPUBLISHED. © COPYRIGHT - By - ALL RIGHTS RESERVED. RELEASED FOR PUBLICATION

| | | | | |
|--|---------------------|----------|--------------------------|---------------------|
| DIMENSIONS: INCHES | DWN R.RICHARDSON | 27JUN05 | MATERIAL CARBON STEEL | FINISH SEE TABLE |
| | CHK C.ROHDE | 27JUN05 | TE Connectivity | |
| TOLERANCES UNLESS OTHERWISE SPECIFIED: | APVD M.WALMSLEY | 27JUN05 | | |
| 0 PLC ± - | PRODUCT SPEC | - | SIZE | CAGE CODE |
| 1 PLC ± - | APPLICATION SPEC | - | A4 | 00779 |
| 2 PLC ± - | | | DRAWING NO | |
| 3 PLC ± - | | | C-5207954 | |
| 4 PLC ± - | | | RESTRICTED TO | |
| ANGLES ± - | WEIGHT | 0.000000 | - | |
| | CUSTOMER DRAWING | | SCALE | 4:1 |
| | | | SHEET | 1 OF 1 |
| | | | REV | A |