

## User's Guide

# D0119LT-29-1901

# **VFD- RoHS Compliant**

(Vacuum Fluorescent Display Module)

---

For product support, contact

**Newhaven Display International**  
**2511 Technology Drive, #101**  
**Elgin, IL 60124**

Tel: (847) 844-8795 Fax: (847) 844-8796

February 25, 2008

# Vacuum Fluorescent Display Specification

PART NUMBER: D0119LT-29-1901

FEATURES: 19 Digits, 7-Segmented, Instrumentation, Decimal Point, Comma

APPLICATION: Character Display ( 7-Segmented )

RATINGS: Below

Outer Dimensions	Panel Length	P.L.	205.0	mm	
	Panel Height	P.H.	29.0	mm	
	Panel Thickness	P.T.	8.0	mm	
Leads	Lead Pitch	L.P.	2.54	mm	
	Lead Out	-	SIL		
Character Size	Character Height	C.H.	11.0 / 13.0	mm	
	Character Width	C.W.	4.9 / 5.5	mm	
Item	Symbol	Min.	Recommended	Max.	Unit
Filament Voltage	Ef	7.65	8.5	9.35	Vac
Peak Grid Voltage	ec	-	42.0	46.0	Vp-p
Peak Anode Voltage	eb	-	42.0	46.0	Vp-p
-	tp	-	-	-	-
Duty Cycle	Du	-	1/21	-	-
Pulse Width	tp	-	100	-	uS
Operating Temperature	Topr	-40	-	+85	C
Storage Temperature	Tstg	-50	-	+95	C
Color of Illumination	Green				

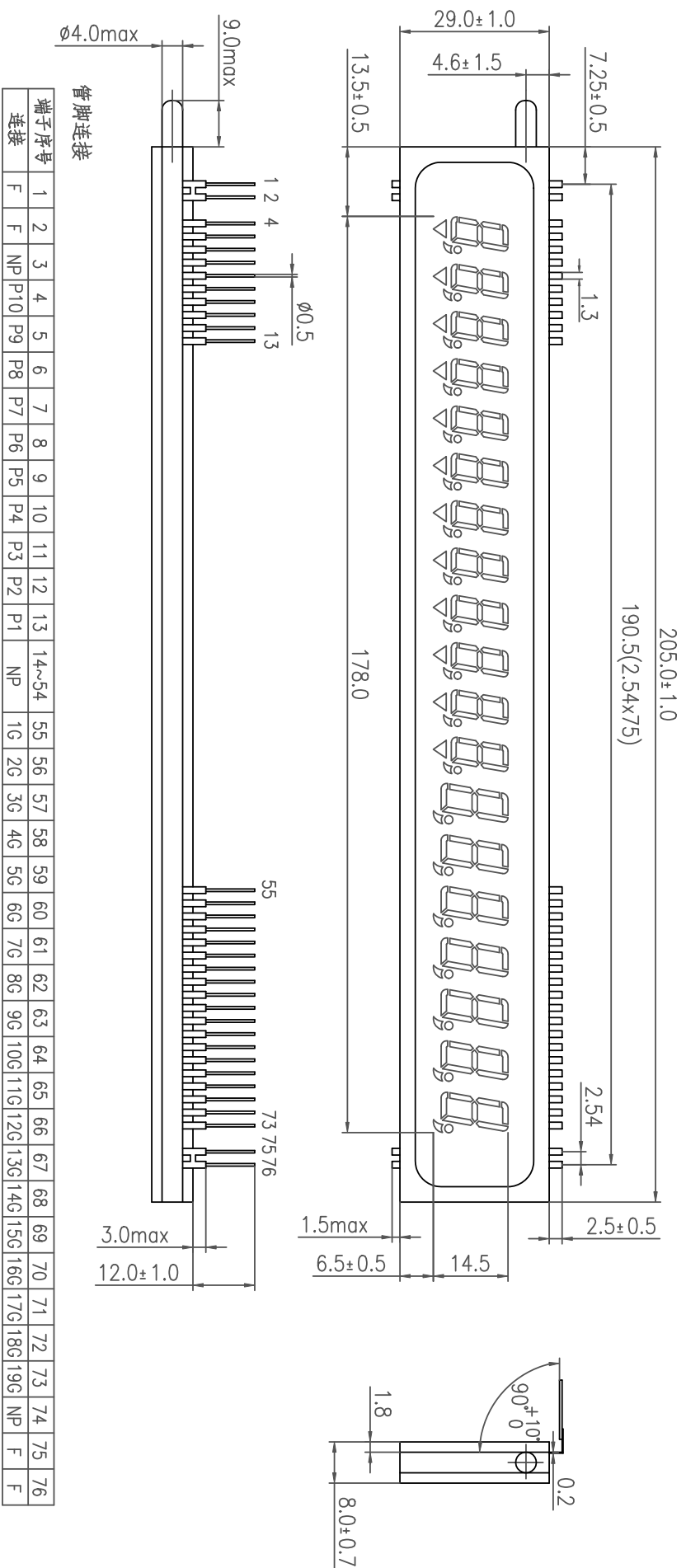
**D0119LT-29-1901**

**Electrical  
Characteristics**

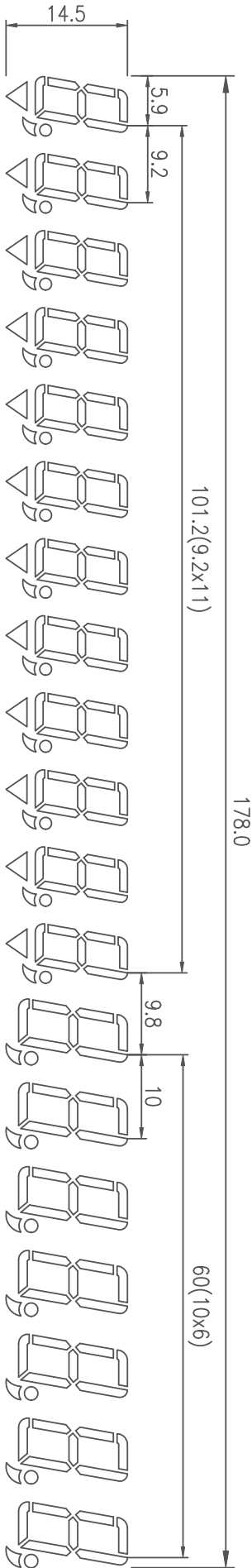
Item	Symbol	Test Condition	Min.	Typical	Max.	Unit
<b>Filament Current</b>	If -	Ef = 8.5 Vac eb = ec = 0	123.8 -	137.5 -	151.3 -	mAac -
<b>Anode Current</b>	ib/1G~12G ib/13G~19G - - -	Ef = 8.5 Vac eb = 42.0 Vp-p ec = 42.0 Vp-p Du = 1/21 tp = 100 uS	- - - - -	9.0 10.0 - - -	18.0 20.0 - - -	mAp-p mAp-p mAp-p mAp-p mAp-p
<b>Grid Current</b>	ic / 1G~12G ic / 13G~19G - - -		- - - - -	11.5 12.0 - - -	23.0 24.0 - - -	MAp-p MAp-p MAp-p MAp-p MAp-p
<b>Luminance</b>	L(G) -		350 (102)	700 (204)	- -	cd/m <sup>2</sup> fL
<b>Luminance Ratio</b>	Lmin/Lmax		50	-	-	%
<b>Grid Cut-off Voltage</b>	Ecco	Ef = 8.5 Vac eb = 42.0 Vdc	-8.0	-	-	Vdc
<b>Anode Cut-off Voltage</b>	Ebco	Ef = 8.5 Vac ec = 42.0 Vp-p Du = 1/21 tp = 100uS	-8.0	-	-	Vdc

**Drive Mode = Dynamic State**

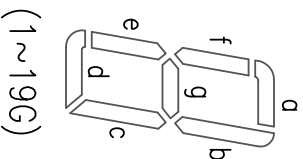
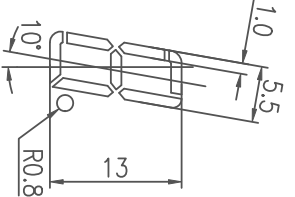
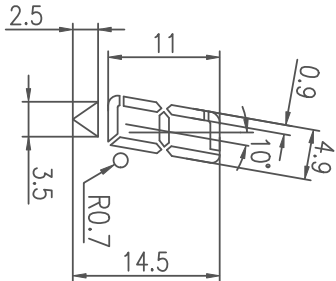
外形图



显示面



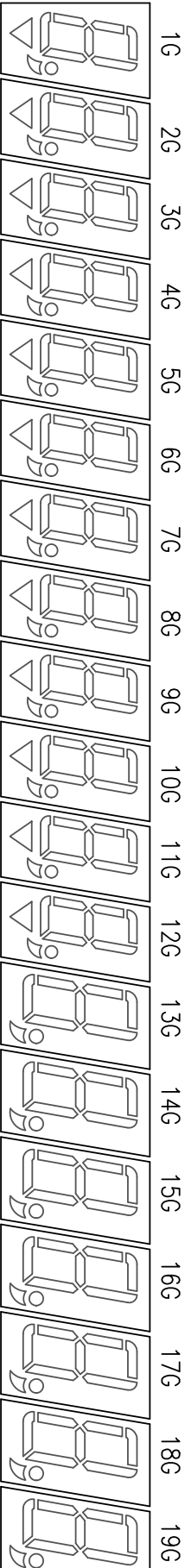
显示颜色：绿色（全部）



栅极分割

(1~12G)

(13~19G)



## 阳极连接

	1G	2G	3G	4G	5G	6G	7G	8G	9G	10G	11G	12G	13G	14G	15G	16G	17G	18G	19G		
P1	a	a	a	a	a	a	a	a	a	a	a	a	a	a	a	a	a	a	a	a	
P2	b	b	b	b	b	b	b	b	b	b	b	b	b	b	b	b	b	b	b	b	b
P3	f	f	f	f	f	f	f	f	f	f	f	f	f	f	f	f	f	f	f	f	f
P4	g	g	g	g	g	g	g	g	g	g	g	g	g	g	g	g	g	g	g	g	g
P5	c	c	c	c	c	c	c	c	c	c	c	c	c	c	c	c	c	c	c	c	c
P6	e	e	e	e	e	e	e	e	e	e	e	e	e	e	e	e	e	e	e	e	e
P7	d	d	d	d	d	d	d	d	d	d	d	d	d	d	d	d	d	d	d	d	d
P8	o	o	o	o	o	o	o	o	o	o	o	o	o	o	o	o	o	o	o	o	o
P9	∅	∅	∅	∅	∅	∅	∅	∅	∅	∅	∅	∅	∅	∅	∅	∅	∅	∅	∅	∅	∅
P10	▽	▽	▽	▽	▽	▽	▽	▽	▽	▽	▽	▽	▽	▽	▽	▽	▽	▽	▽	▽	▽