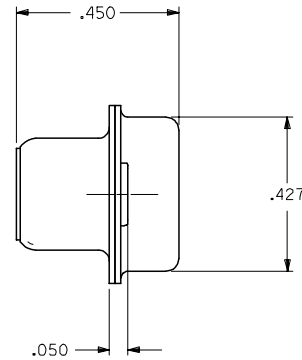
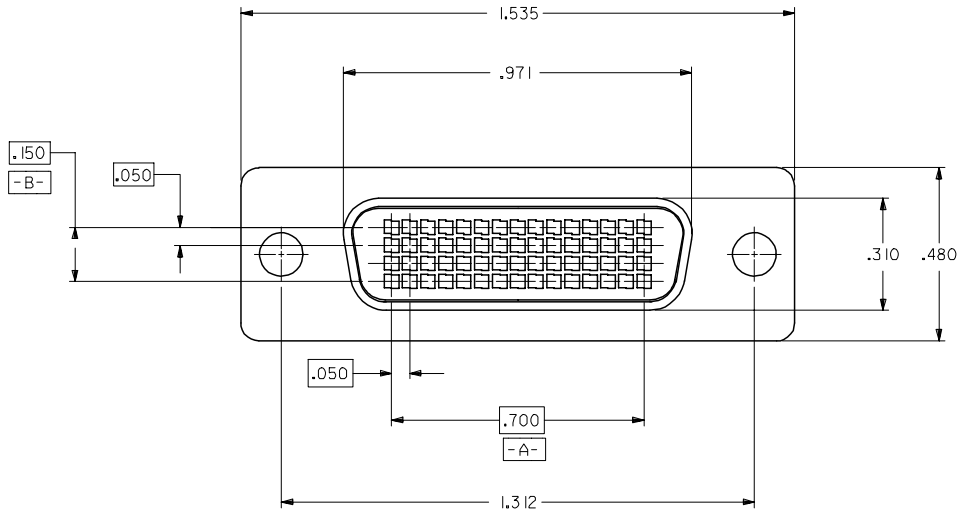
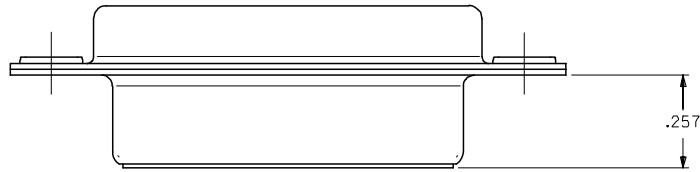


PART NUMBER	PRODUCT DESCRIPTION	FRONT SHELL PLATING
71691-0003	60ckt I/O RECEPTACLE CONNECTOR SUB-ASSEMBLY	BRIGHT TIN
71691-9003	60ckt I/O RECEPTACLE CONNECTOR SUB-ASSEMBLY	BRIGHT NICKEL

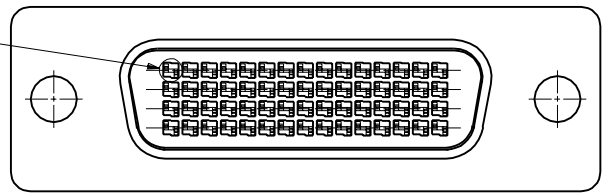
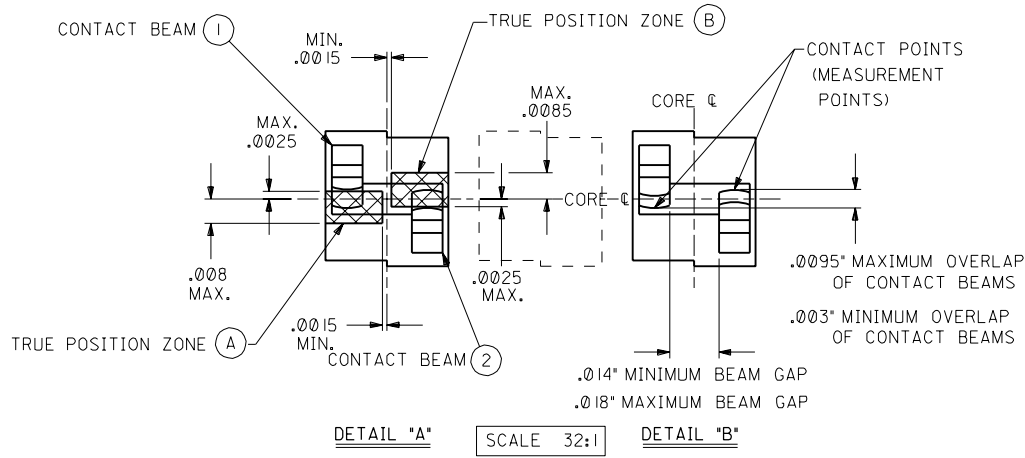
**NOTES:**

- DAMAGE OF THE CONTACT FINGERS DURING THE ASSEMBLY OPERATION IS UNACCEPTABLE. CORRECT ALIGNMENT OF THE TERMINAL STRIP ASSEMBLIES, PRIOR TO AND DURING ASSEMBLY IS NECESSARY TO AVOID DAMAGE.
- PLASTIC HOUSING:  
GLASS FILLED LCP (LIQUID CRYSTAL POLYMER), UL 94 V-0, COLOR: BLACK.
- FRONT SHELL:  
DEEP DRAWN STEEL, .016" THICK;  
PLATING: SEE TABLE  
BRIGHT TIN: 150-250 MICROINCHES BRIGHT TIN OVER 50-150 MICROINCHES NICKEL OVER COPPER FLASH OVERALL (OPTIONAL).  
BRIGHT NICKEL: 100-175 MICROINCHES BRIGHT NICKEL OVER 50 MICROINCHES MAXIMUM COPPER OVERALL.
- BACK SHELL:  
DEEP DRAWN STEEL, .016" THICK;  
PLATING: 150-250 MICROINCHES BRIGHT TIN OVER 50-150 MICROINCHES NICKEL OVER COPPER FLASH OVERALL (OPTIONAL).
- THIS PRODUCT CONFORMS TO PRODUCT SPECIFICATION PS-70928.
- INSERT-MOLDED TERMINAL STRIP ASSEMBLIES ARE SUPPLIED SEPARATELY (SEE SHEET 2 FOR ORDERING INFORMATION).
- PACKAGING SPECIFICATION PK-70873-0236 APPLIES.



2	A
1	C
SHT	REV

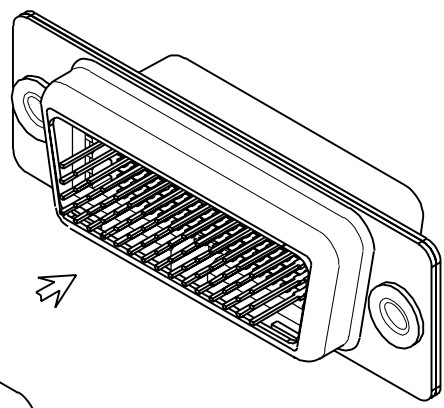
ADD 71691-9003 EC NO: UCP2006-0666 DRAWN BY: BARRA 2006/02/06 CHKD: MORGAN 2006/02/07 APPR: MILLER 2006/02/09	QUALITY SYMBOLS ▽=0 ▽=0	GENERAL TOLERANCES (UNLESS SPECIFIED)		DIMENSION STYLE INCH ONLY		SCALE 4:1	DESIGN UNITS INCH	THIRD ANGLE PROJECTION			
		4 PLACES ± --- ± ---	mm INCH	DRAWN BY SCHMIDGALL	DATE 93/08/04	TITLE .050 PITCH LFH 60 CKT I/O SALES ASSEMBLY					
		3 PLACES ± --- ± ---		CHECKED BY OSULLIVAN	DATE 93/08/04	MATERIAL NO.					
		2 PLACES ± --- ± ---		APPROVED BY BIXLER	DATE 93/08/04	DOCUMENT NO. SDA-71691-0003					
1 PLACE ± --- ± ---		ANGULAR ±1/2°		SEE TABLE		SHEET NO. 1 OF 2					
DRAFT WHERE APPLICABLE MUST REMAIN WITHIN DIMENSIONS				THIS DRAWING CONTAINS INFORMATION THAT IS PROPRIETARY TO MOLEX INCORPORATED AND SHOULD NOT BE USED WITHOUT WRITTEN PERMISSION							



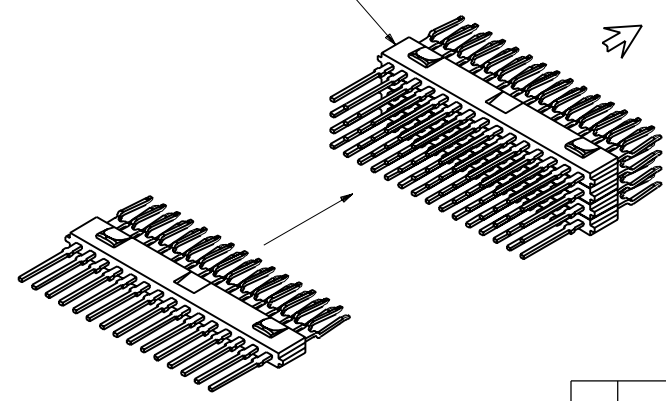
CONTACT TRUE POSITION REQUIREMENTS

- \* CONTACT BEAM ① MAY BE LOCATED ANYWHERE WITHIN THE BOUNDARIES OF TRUE POSITION ZONE ① PROVIDED THAT THE CONDITIONS OF DETAIL "B" ARE MET.
- \* CONTACT BEAM ② MAY BE LOCATED ANYWHERE WITHIN THE BOUNDARIES OF TRUE POSITION ZONE ② PROVIDED THAT THE CONDITIONS OF DETAIL "B" ARE MET.

NOTE: ALL TRUE POSITION MEASUREMENTS TO BE TAKEN AT CONTACT POINTS, NOT AT CONTACT TIPS. ALL TRUE POSITION ZONES ARE TO BE DEFINED RELATIVE TO THE HOUSING CORE CENTERLINES.



STEP 1.  
STACK 4 STRIP ASSEMBLIES  
AS SHOWN



STEP 2.  
AFTER TERMINATION, ASSEMBLE  
THE STACKED STRIP ASSEMBLIES  
INTO THE CONNECTOR HOUSING,  
ENSURING THAT THE LATCHES ARE  
CORRECTLY ORIENTATED AND SEATED.

INSERT-MOLDED TERMINAL STICKS  
FOUR REQUIRED PER ASSEMBLY  
(SEE SALES DRAWING: SDA-70985-100\*)

MFG. SH. REV.		REVISIONS		REVISIONS		REVISIONS		REVISIONS	
A		SEE SHEET 1		A		SEE SHEET 1		A	
LTR.		LTR.		LTR.		LTR.		LTR.	

DIMENSIONS SHOWN (METRIC) INCH UNLESS OTHERWISE SPECIFIED TOLERANCES: ANGULAR ± 1/2°		▽ = 0 ▼ = 0		REVISE ONLY ON CAD SYSTEM	
5 PLACE ± --- ---	INCH	METRIC	TITLE .050" PITCH LFH 60 ct I/O SALES ASSEMBLY		
2 PLACE ± --- ± ---	INCH	METRIC	MOLEX INCORPORATED SHEET NO. DATE U.S.A. 2 08/04/93		
1 PLACE --- ± ---	INCH	METRIC	PART NO. DRWG. NO. SDA-71691-0003		
DRAFT WHERE APPLICABLE MUST REMAIN WITHIN DIMENSIONS		FILE NAME: S71691X2.DWG. THIS DRAWING CONTAINS INFORMATION THAT IS PROPRIETARY TO MOLEX INC. AND SHOULD NOT BE USED WITHOUT WRITTEN PERMISSION.			
DRAWN BY: SCHMIDGALL APP'D BY: BIXLER		CHK'D BY: OSULLIVAN SCALE: 4:1		CD C	