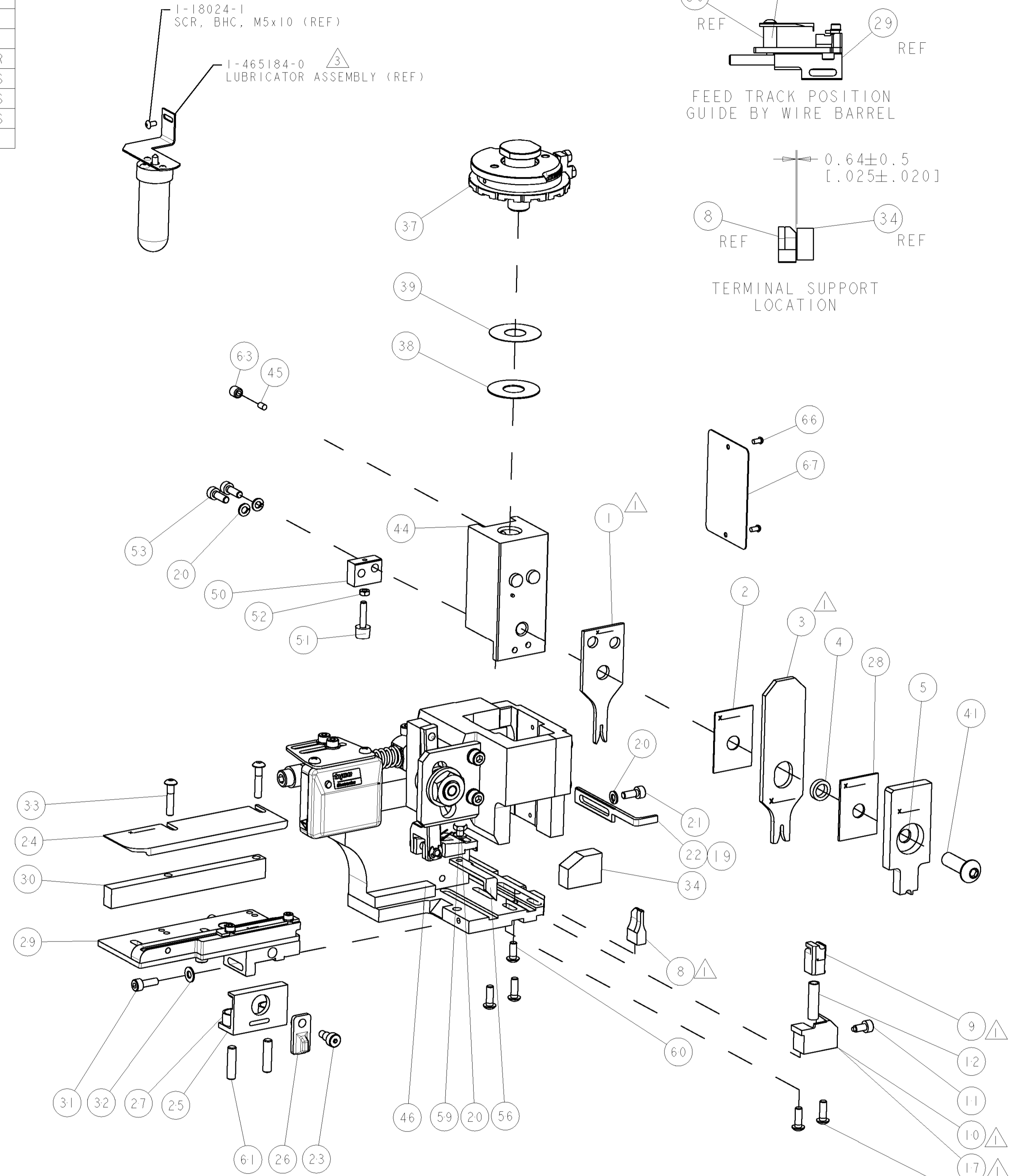


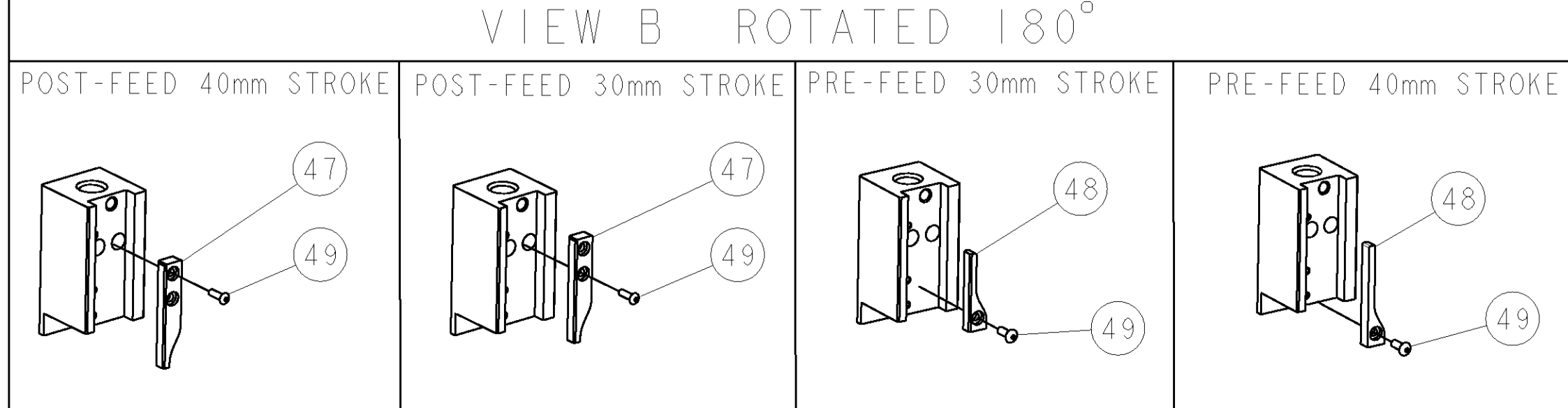
PART NUMBER	REV	TERMINATOR	FEED TYPE	DESCRIPTION
1528602-1	A	LEADMAKER	MECH POST FEED	CUTS CARRIER
1528602-2	A	BENCH	MECH PRE FEED	CUTS CARRIER
1528602-6	A	LEADMAKER	MECH POST FEED	CONTINUOUS CARRIER
7-1528602-1	A	LEADMAKER	MECH POST FEED	-1 AND SPARE PARTS
7-1528602-2	A	BENCH	MECH PRE FEED	-2 AND SPARE PARTS
7-1528602-6	A	LEADMAKER	MECH POST FEED	-6 AND SPARE PARTS
7-1528602-7	A	-	-	SPARE PARTS KIT

CRIMP DATA		FCI TERMINAL		TYCO CRIMP SPEC	
TERMINAL NAME: 1.5mm FEMALE CONTACT					
CRIMP	SIZE	TYPE	RANGE		
WIRE	1.40 [1.055 IN]	F	0.20-0.35mm <sup>2</sup>		
INSUL	2.03 [1.080 IN]	O	1.30 MAX [1.051 IN]		
WIRE STRIP LENGTH		APPL INSTRUCTIONS			
3.50-4.30 [1.38-1.70 IN]		408-8322 & 408-8490			
TERMINAL APPL SPEC		FEED		8.13 [1.320 IN]	
TERMINALS APPLIED					
TYCO PN	MANU PN				
1572932-1	6 000 05 11				
1572932-2	6 000 05 14				
WIRE SIZE	CRIMP HEIGHT	REF SETTING			
0.35mm <sup>2</sup>	1.09 ±0.05 [1.043 ±.002 IN]	C0			
0.20 or 0.22mm <sup>2</sup>	1.02 ±0.05 [1.040 ±.002 IN]	C6			

- △ RECOMMENDED SPARE PARTS.
- 2. GREASE RAM, CAM, CAM FOLLOWER AND FEED ROD LIGHTLY.
- △ CERTAIN TERMINALS REQUIRE LUBRICATION. REFER TO THE APPLICATOR INSTRUCTION SHEET FOR MORE INFORMATION.
- 4. LUBRICATE DAILY PER THE APPLICATOR INSTRUCTION SHEET SUPPLIED WITH THE APPLICATOR.
- △ ALL CRIMP DATA CALCULATED BY TYCO ELECTRONICS UK LTD.



\* WARNING  
ON INSTALLATION, SET WIRE DISC TO LARGEST WIRE SIZE SETTING. USE OF SETTINGS BELOW MIN. REQUIRED CRIMP HEIGHT SETTING WILL CAUSE DAMAGE TO CRIMP TOOLING.



-77	-76	-72	-71	-6	-2	-1	PART NO	DESCRIPTION	ITEM NO
-	-	-	-	-	-	-	-	-	84
-	-	-	-	-	-	-	-	-	83
-	-	-	-	-	-	-	-	-	82
-	-	-	-	-	-	-	-	-	81
-	-	-	-	-	-	-	-	-	80
-	-	-	-	-	-	-	-	-	79
-	-	-	-	-	-	-	-	-	78
-	-	-	-	-	-	-	-	-	77
-	-	-	-	-	-	-	-	-	76
-	-	-	-	-	-	-	-	-	75
-	-	-	-	-	-	-	-	-	74

SET UP GAGE 458637-3		LOC	DIST	REVISONS					
A	66			REV	DATE	BY	APPD		
				A	SEE ECO-06-004985	06MAR2006	DP MC		
-	-	-	-	-	-	-	-	73	
-	-	-	-	-	-	-	-	72	
-	-	-	-	-	-	-	-	71	
-	-	-	-	-	-	-	-	70	
-	-	-	-	-	-	-	-	69	
-	-	-	-	-	-	-	-	68	
-	-	-	-	-	-	-	-	67	
-	-	-	-	-	-	-	-	66	
-	-	-	-	-	-	-	-	65	
-	-	-	-	-	-	-	-	64	
-	-	-	-	-	-	-	-	63	
-	-	-	-	-	-	-	-	62	
-	-	-	-	-	-	-	-	61	
-	-	-	-	-	-	-	-	60	
-	-	-	-	-	-	-	-	59	
-	-	-	-	-	-	-	-	58	
-	-	-	-	-	-	-	-	57	
-	-	-	-	-	-	-	-	56	
-	-	-	-	-	-	-	-	55	
-	-	-	-	-	-	-	-	54	
-	-	-	-	-	-	-	-	53	
-	-	-	-	-	-	-	-	52	
-	-	-	-	-	-	-	-	51	
-	-	-	-	-	-	-	-	50	
-	-	-	-	-	-	-	-	49	
-	-	-	-	-	-	-	-	48	
-	-	-	-	-	-	-	-	47	
-	-	-	-	-	-	-	-	46	
-	-	-	-	-	-	-	-	45	
-	-	-	-	-	-	-	-	44	
-	-	-	-	-	-	-	-	43	
-	-	-	-	-	-	-	-	42	
-	-	-	-	-	-	-	-	41	
-	-	-	-	-	-	-	-	40	
-	-	-	-	-	-	-	-	39	
-	-	-	-	-	-	-	-	38	
-	-	-	-	-	-	-	-	37	
-	-	-	-	-	-	-	-	36	
-	-	-	-	-	-	-	-	35	
-	-	-	-	-	-	-	-	34	
-	-	-	-	-	-	-	-	33	
-	-	-	-	-	-	-	-	32	
-	-	-	-	-	-	-	-	31	
-	-	-	-	-	-	-	-	30	
-	-	-	-	-	-	-	-	29	
-	-	-	-	-	-	-	-	28	
-	-	-	-	-	-	-	-	27	
-	-	-	-	-	-	-	-	26	
-	-	-	-	-	-	-	-	25	
-	-	-	-	-	-	-	-	24	
-	-	-	-	-	-	-	-	23	
-	-	-	-	-	-	-	-	22	
-	-	-	-	-	-	-	-	21	
-	-	-	-	-	-	-	-	20	
-	-	-	-	-	-	-	-	19	
-	-	-	-	-	-	-	-	18	
-	-	-	-	-	-	-	-	17	
-	-	-	-	-	-	-	-	16	
-	-	-	-	-	-	-	-	15	
-	-	-	-	-	-	-	-	14	
-	-	-	-	-	-	-	-	13	
-	-	-	-	-	-	-	-	12	
-	-	-	-	-	-	-	-	11	
-	-	-	-	-	-	-	-	10	
-	-	-	-	-	-	-	-	9	
-	-	-	-	-	-	-	-	8	
-	-	-	-	-	-	-	-	7	
-	-	-	-	-	-	-	-	6	
-	-	-	-	-	-	-	-	5	
-	-	-	-	-	-	-	-	4	
-	-	-	-	-	-	-	-	3	
-	-	-	-	-	-	-	-	2	
-	-	-	-	-	-	-	-	1	
-77	-76	-72	-71	-6	-2	-1	PART NO	DESCRIPTION	ITEM NO
-	-	-	-	-	-	-	-	-	84
-	-	-	-	-	-	-	-	-	83
-	-	-	-	-	-	-	-	-	82
-	-	-	-	-	-	-	-	-	81
-	-	-	-	-	-	-	-	-	80
-	-	-	-	-	-	-	-	-	79
-	-	-	-	-	-	-	-	-	78
-	-	-	-	-	-	-	-	-	77
-	-	-	-	-	-	-	-	-	76
-	-	-	-	-	-	-	-	-	75
-	-	-	-	-	-	-	-	-	74

DIMENSIONS: mm [IN]		TOLERANCES UNLESS OTHERWISE SPECIFIED:	
0 PLC	±	APVD	24JAN2006
1 PLC	±	NAME	M. CLIFFORD
2 PLC	±	PRODUCT SPEC	
3 PLC	±	APPLICATION SPEC	See Table
4 PLC	±	WEIGHT	
ANGLES	±	CUSTOMER DRAWING	
MATERIAL		FINISH	

DATE	24JAN2006	BY	PROUSE
DATE	24JAN2006	BY	CLIFFORD
SCALE		3:5	
SHEET		1 OF 1	
REV		A	

Tyco Electronics		Tyco Electronics	
Harrisburg, PA 17105-3608		Harrisburg, PA 17105-3608	
FINE ADJUST SIDE FEED HDI APPLICATOR			
SIZE	CAGE CODE	DRAWING NO	RESTRICTED TO
A1	00779	1528602	