

2

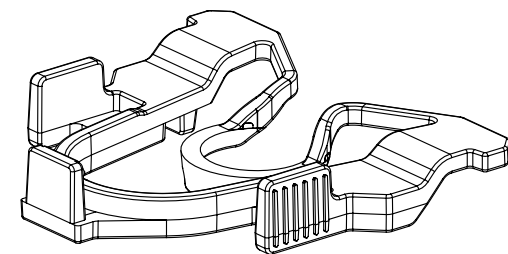
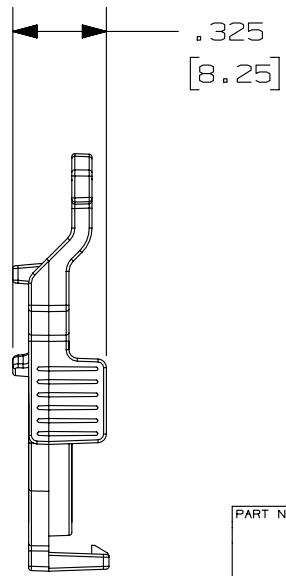
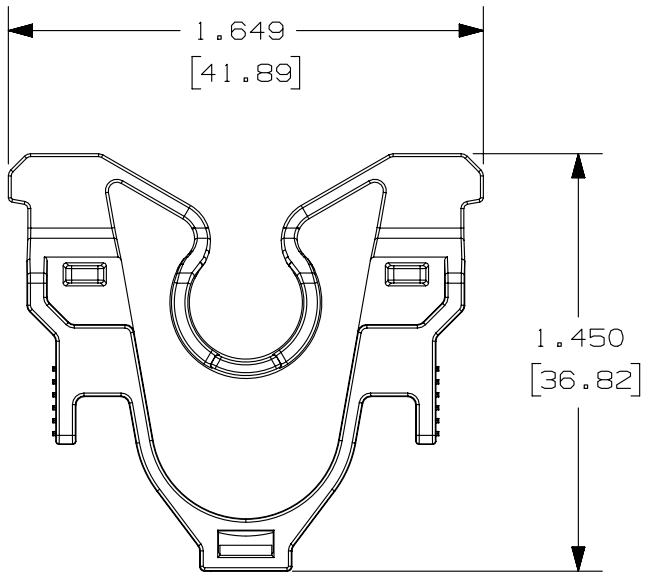
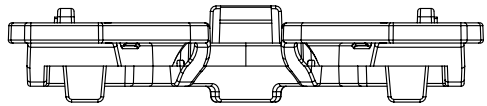
1

THIS COPY IS PROVIDED ON A RESTRICTED BASIS AND IS NOT TO BE USED IN ANY WAY DETRIMENTAL TO THE INTERESTS OF PANDUIT CORP.

| | | |
|---------------------|-------|--------------------|
| PANDUIT PART NUMBER | COLOR | WEIGHT (APPROX) |
| QPPLD6-X | RED | 0.034LB [15.6 g] |

NOTES:

1. SEE CURRENT CATALOG FOR VARIOUS APPLICATIONS.
2. THE LOCK-IN DEVICE IS DESIGNED FOR QPP6** SIX-POSITION PLUG PACKS.
3. DIMENSIONS IN BRACKETS ARE IN METRIC.
4. PACKAGE CONTAINS TEN LOCK-IN DEVICES.
5. TWO LOCK-IN DEVICES ARE RECOMMENDED TO LOCK-IN ONE QPP6** SIX-POSITION PLUG PACK.



| | | | |
|---|----------|-------------------|-------|
| PART NUMBER | | QPPLD6 - X | |
| TITLE | | | |
| QUICKNET 6 POSITION PLUG PACK LOCK-IN DEVICE | | | |
| CUSTOMER DRAWING | | | |
| ITEM REVISION NAME | | M02802CS/08 | |
| DATASET FILE NAME | | M02802CS_DC30/08B | |
| UNLESS OTHERWISE SPECIFIED, DIMENSIONAL TOLERANCES ARE: IN [mm] | | MATERIAL: | |
| .x ± .xx ± .03 [.8] | | PC | |
| .xxx ± .010 [.3] | | DRAWING NUMBER: | |
| ANGLES ± | | 02802 - 30 | |
| THIRD ANGLE PROJECTION | | SHT 1 OF 1 | |
| DRAWN BY | DATE | CHK | SCALE |
| MDJR | 10/23/07 | WFMI | NONE |
| REV | DATE | BY | CHK |
| | | | |
| 1 | 5/22/14 | JSP | REFR |
| R | 1-30-06 | MDJR | WFMI |
| DESCRIPTION | | ECN | |
| A. REVISED DRAWING TITLE BLOCK. | | 02802-30 | |
| RELEASED TO PRODUCTION | | 02802-30 | |

D10100DA/14

2

1