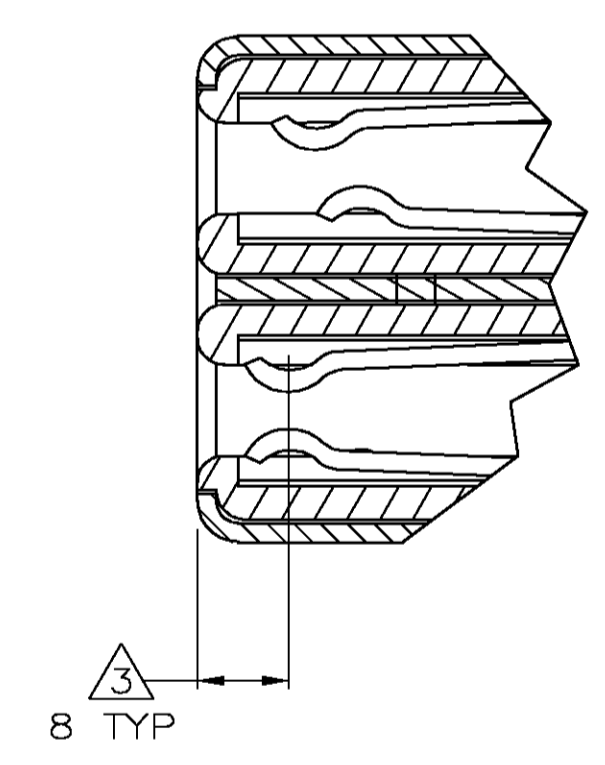
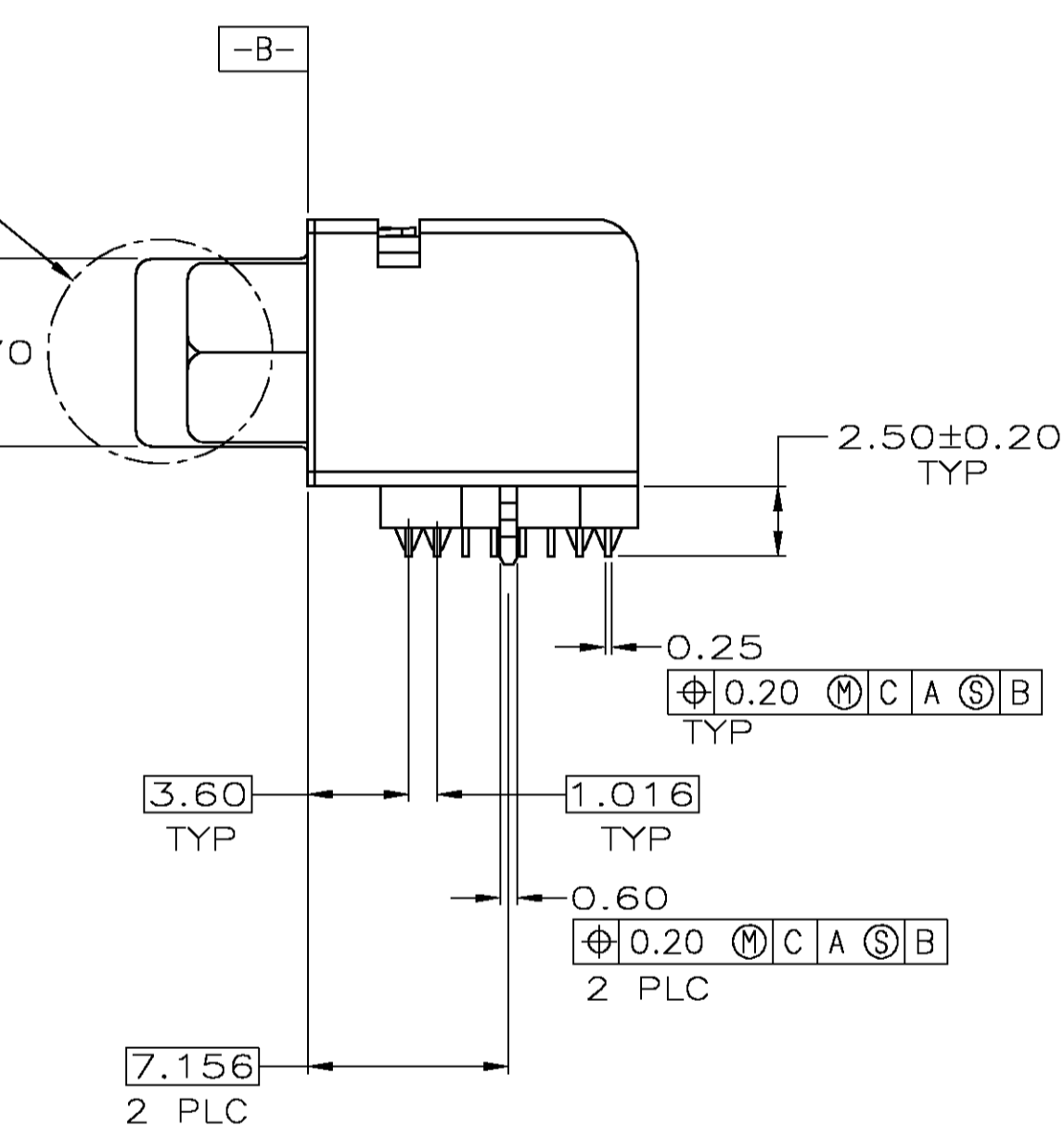
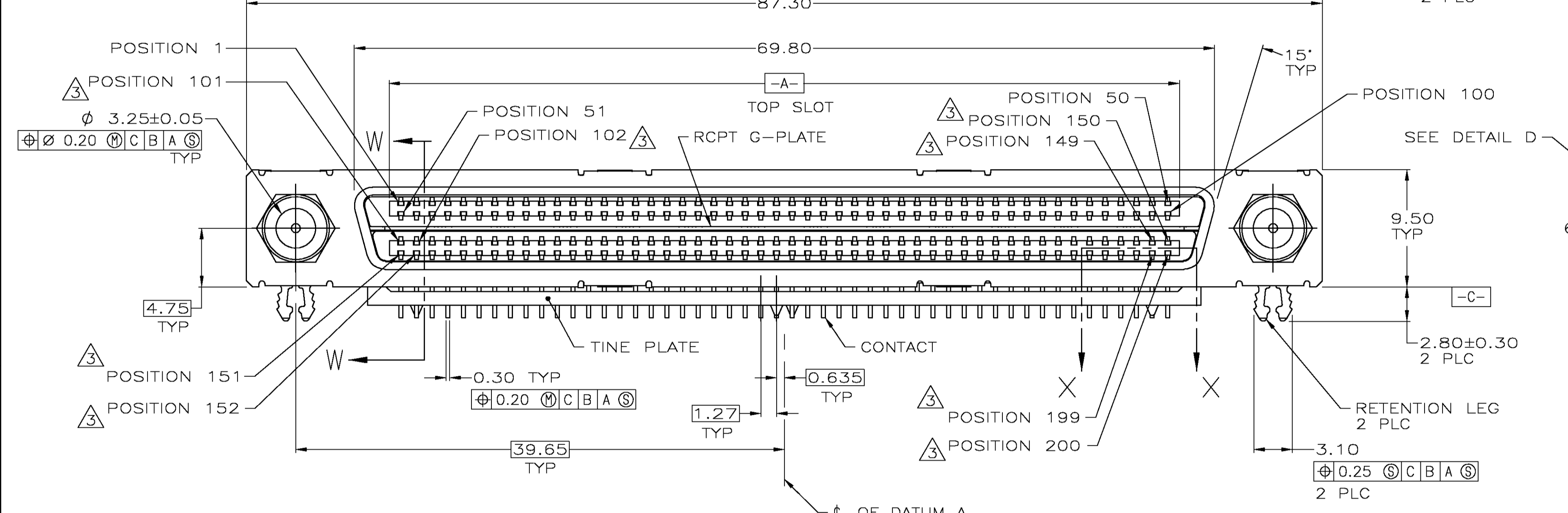
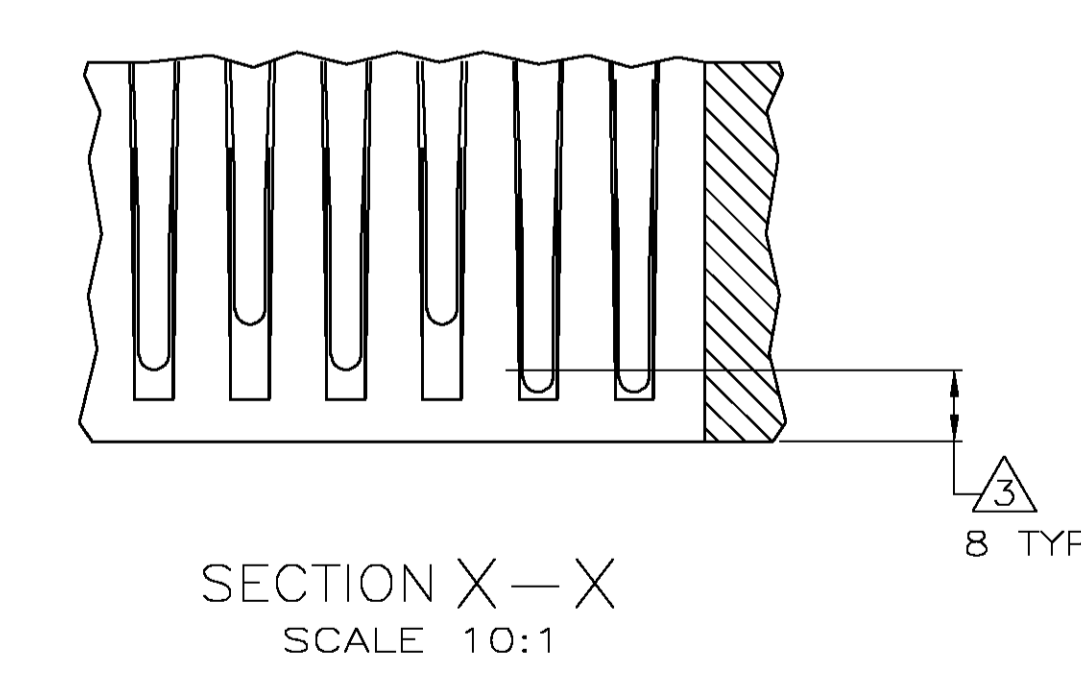
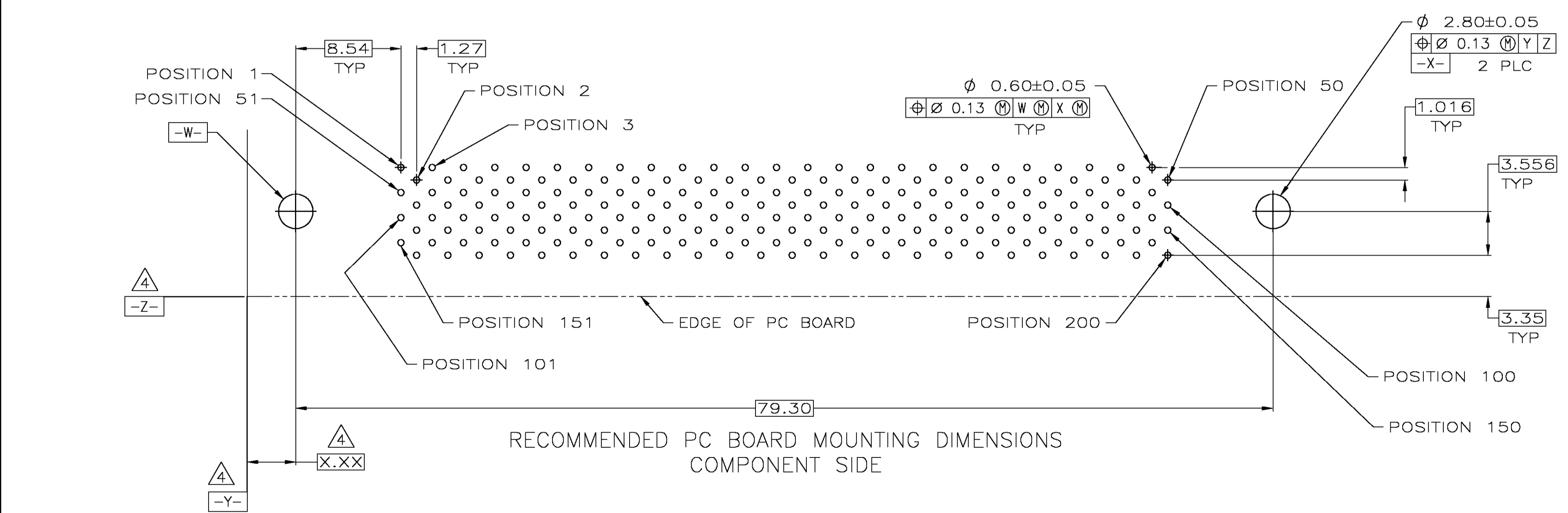


- △ HOUSING AND TINE PLATE: POLYESTER, NATURAL.  
 CONTACTS: PHOSPHOR BRONZE.  
 SHELL: CARBON STEEL.  
 RCPT G-PLATE: STAINLESS STEEL.  
 GUIDE SOCKET AND RETENTION LEG: BRASS.
- △ SHELL: 3.00µm MIN NICKEL OVER 1.30µm MIN COPPER.  
 RETENTION LEG: 2.00µm MIN TIN OVER 1.00µm MIN NICKEL.  
 GUIDE SOCKET: NICKEL OVER COPPER.  
 CONTACTS: 0.76µm MIN GOLD FOR A LENGTH OF 1.10 MIN FROM MATING END,  
 2.54 MIN TIN FOR A LENGTH OF 2.80 MIN FROM OPPOSITE END,  
 BOTH OVER 1.27µm MIN NICKEL.
- △ CONTACTS 101,102,149,150,151,152,199, AND 200 ARE SEQUENCED  
 TOWARD MATING FACE AS SHOWN, ALL OTHERS ARE SEQUENCED IN A  
 STAGGERED PATTERN.
- △ DATUMS AND BASIC DIMENSIONS ESTABLISHED BY CUSTOMER.
- △ DATE CODE MAY BE MARKED ON EITHER END.



DETAIL D  
 SCALE 10:1



SECTION X-X  
 SCALE 10:1

5787882-1  
 PART NUMBER

THIS DRAWING IS A CONTROLLED DOCUMENT.		DIN L VARELA - 12-07-04	Tyco Electronics Corporation Harrisburg, Pa 17105-3608
DIMENSIONS: mm		CHK C. ROHDE 12-07-04	
TOLERANCES UNLESS OTHERWISE SPECIFIED:		APVD W. WALMSLEY 12-07-04	NAME
0 PLC ± -	1 PLC ± -	PRODUCT SPEC	RECEPTACLE ASSEMBLY, 200 POSITION, RIGHT ANGLE, .050, CHAMP
2 PLC ± 0.25	3 PLC ± -	APPLICATION SPEC	SIZE CAGE CODE DRAWING NO RESTRICTED TO
4 PLC ± -	ANGLES ± ±	WEIGHT	A1 00779 C=5787882
MATERIAL △	FINISH △	CUSTOMER DRAWING	SCALE 1:1 SHEET 1 OF 1 REV Q