

THIS DRAWING IS UNPUBLISHED.

RELEASED FOR PUBLICATION

20

© COPYRIGHT 20

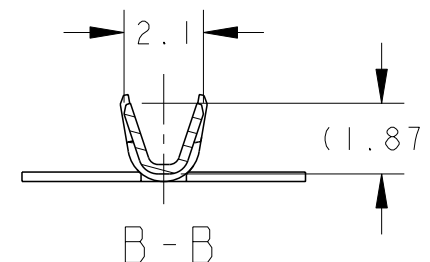
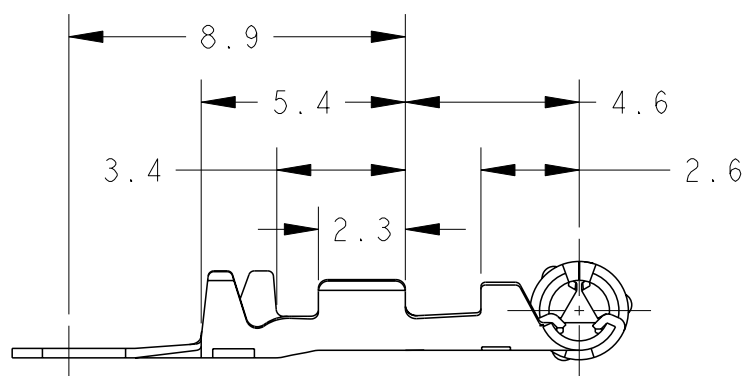
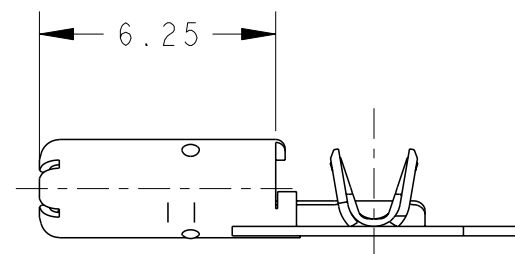
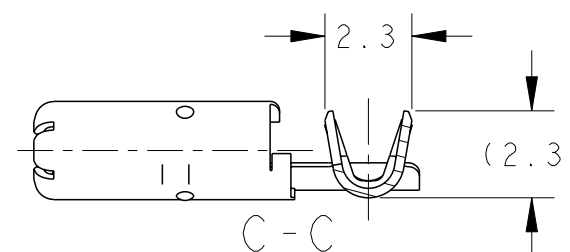
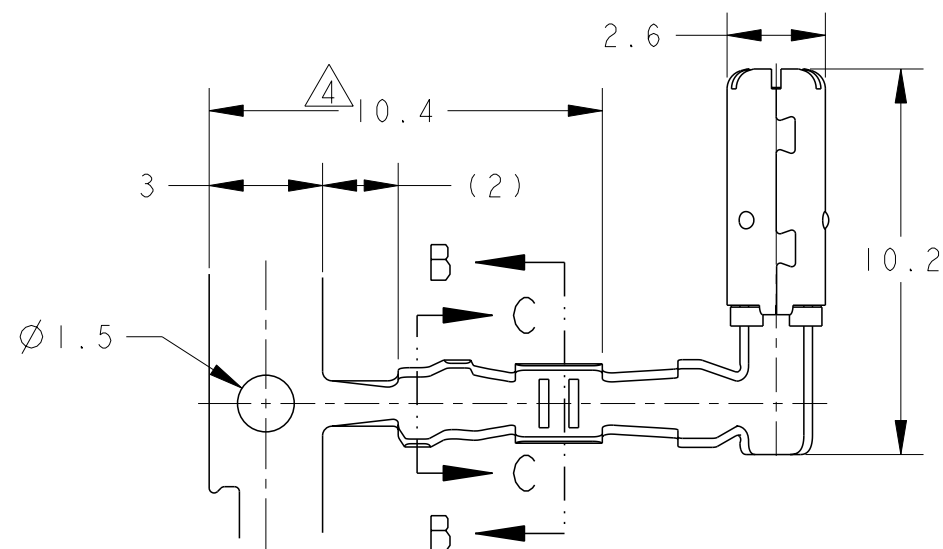
ALL RIGHTS RESERVED.

LOC  
J

DIST  
-

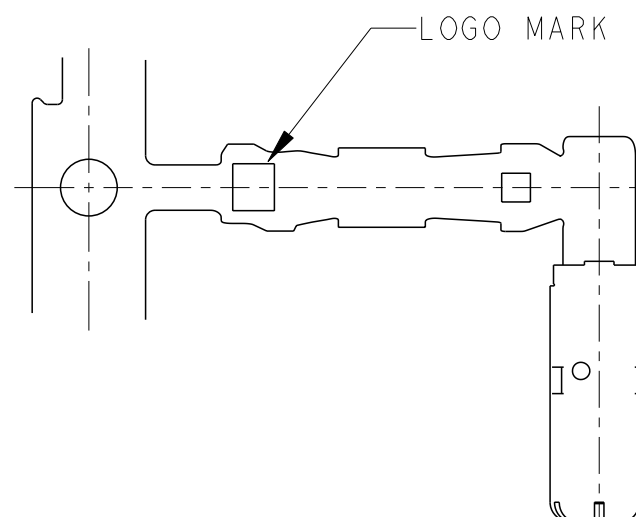
REVISIONS  
変更

P	LTR	DESCRIPTION	DATE	DWN	APVD
0		RELEASED	FJA0-0144-03	28MAR2003	RN HY
A		REVISED	ECR-10-005857	13MAY10	SF KB
A1		REVISED	ECR-10-022322	01NOV10	AY TH
A2		REVISED	ECR-15-011109	13AUG15	AY TH



1. APPLICABLE WIRE RANGE ;  
AVSS 0.3, 0.5, 0.3f, 0.5mm<sup>2</sup>  
CAVS 0.3, 0.5mm<sup>2</sup>  
CHFUS 0.35, 0.50mm<sup>2</sup>  
HFTUF 2cX0.5mm<sup>2</sup>
  2. APPLICATION SPEC ; 114-5315
  3. APPLICATOR FEED ; 18mm
- △ TIN PLATING AREA

1. 適用電線 ;  
AVSS 0.3, 0.5, 0.3f, 0.5mm<sup>2</sup>  
CAVS 0.3, 0.5mm<sup>2</sup>  
CHFUS 0.35, 0.50mm<sup>2</sup>  
HFTUF 2cX0.5mm<sup>2</sup>
  2. 取付適用規格 ; 114-5315
  3. アプリケータ送りピッチ ; 18mm
- △ すずめっき範囲



SELECTIVE GOLD	1612124-3
FINISH	PART NUMBER

WIRE RANGE 総合電線断面積	0.22-0.56mm <sup>2</sup>	INSULATION DIA 被覆外径	φ0.95-1.7
-----------------------	--------------------------	------------------------	-----------

THIS DRAWING IS A CONTROLLED DOCUMENT.

DWN	28MAR2003
R. NAGAI	
CHK	28MAR2003
T. HAYASHI	
APVD	28MAR2003
H. YAMAGAMI	

DIMENSIONS: 単位: 概 mm	TOLERANCES UNLESS OTHERWISE SPECIFIED: 一般公差 ±0.2
	0-PLC ±
	1-PLC ±0.1
	2-PLC ±0.01
	3-PLC ±0.001
	4-PLC ±0.0001
	ANGLES ±1'00"

MATERIAL 材料	FINISH 仕上
COPPER Alloy	SELECTIVE GOLD

PRODUCT SPEC	108-5679
APPLICATION SPEC	114-5315
WEIGHT	0.36 g

NAME 名称 ImmdIA SOCKET CONTACT

SIZE	CAGE CODE	DRAWING NO 番号	RESTRICTED TO
A3	00779	C-1612124	-

CUSTOMER DRAWING	SCALE 尺度	SHEET 張	OF OF	REV REV
	5:1	1	1	A2