

NOTES:

1. MATERIALS:

CONNECTOR HOUSING: HIGH TEMPERATURE THERMOPLASTIC
GLASS FILLED, UL 94V-0
EMI CAGE: NICKEL SILVER ALLOY
EMI FINGERS: COPPER ALLOY
TERMINALS: COPPER ALLOY

2. FINISHES:

EMI FINGERS: 0.50 μ M MIN NICKEL
CONTACT AREA: 0.76 μ M MIN GOLD OVER 2.54 μ M MIN NICKEL
TAIL AREA:
OPTION 1: 0.76 μ M-1.52 μ M TIN/LEAD (90/10) OVER 2.54 μ M MIN NICKEL
OPTION 2: 0.76 μ M-1.52 μ M TIN (LEAD FREE) OVER 2.54 μ M MIN NICKEL

3. PRODUCT SPECIFICATION: PS-76866-001

4. PACKAGING SPECIFICATION: PK-76866-001

5. MATES WITH: MOLEX CABLE SERIES 111068

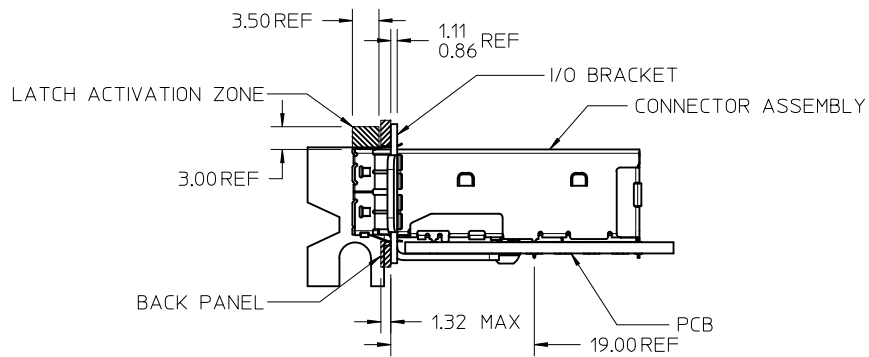
6. MOUNTING HARDWARE: M2X0.4 BUTTON HEAD SCREW

MOUNTING SCREW LENGTH: BOARD THICKNESS + 1.4MM MAX (0.9MM MIN)

PLATING OPT.	MATERIAL NO.
OPTION 1	76866-0001
OPTION 2	76866-0011

GEOMETRY UPDATED IEC NO: UCP2011-0564 DR: DRWINSERWACKI 2010/08/30 CHKD: 2010/10/12 APPR: MBANAKIS	QUALITY SYMBOLS 	GENERAL TOLERANCES (UNLESS SPECIFIED) <table border="1"> <tr> <th></th> <th>mm</th> <th>INCH</th> </tr> <tr> <td>4 PLACES</td> <td>± 0.15</td> <td>± 0.006</td> </tr> <tr> <td>3 PLACES</td> <td>± 0.25</td> <td>± 0.010</td> </tr> <tr> <td>2 PLACES</td> <td>± 0.38</td> <td>± 0.015</td> </tr> <tr> <td>1 PLACE</td> <td>± 0.51</td> <td>± 0.020</td> </tr> </table>		mm	INCH	4 PLACES	± 0.15	± 0.006	3 PLACES	± 0.25	± 0.010	2 PLACES	± 0.38	± 0.015	1 PLACE	± 0.51	± 0.020	DIMENSION STYLE MM ONLY	SCALE 2:1	DESIGN UNITS METRIC	THIRD ANGLE PROJECTION
		mm	INCH																		
	4 PLACES	± 0.15	± 0.006																		
	3 PLACES	± 0.25	± 0.010																		
2 PLACES	± 0.38	± 0.015																			
1 PLACE	± 0.51	± 0.020																			
DRAWN BY: KLANG DATE: 2009/03/04 CHECKED BY: DATE:		APPROVED BY: MBANAKIS DATE: 2010/01/14		TITLE IPASS PLUS HD 1X1 ASSEMBLY		SHEET NO. 1 OF 7															
DRAFT WHERE APPLICABLE MUST REMAIN WITHIN DIMENSIONS		MATERIAL NO. SEE CHART		DOCUMENT NO. SD-76866-001																	
THIS DRAWING CONTAINS INFORMATION THAT IS PROPRIETARY TO MOLEX INCORPORATED AND SHOULD NOT BE USED WITHOUT WRITTEN PERMISSION																					

PCI ADD-IN CARD APPLICATION



ASSEMBLED VIEW

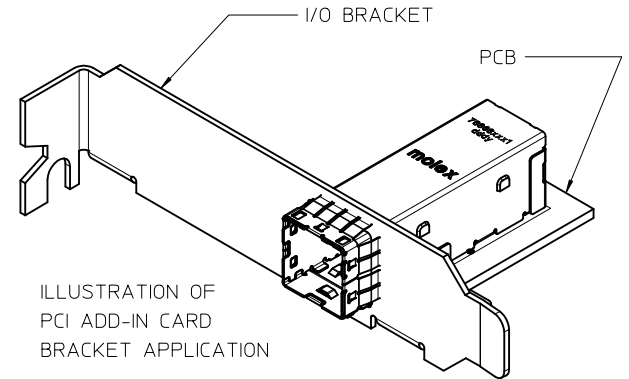
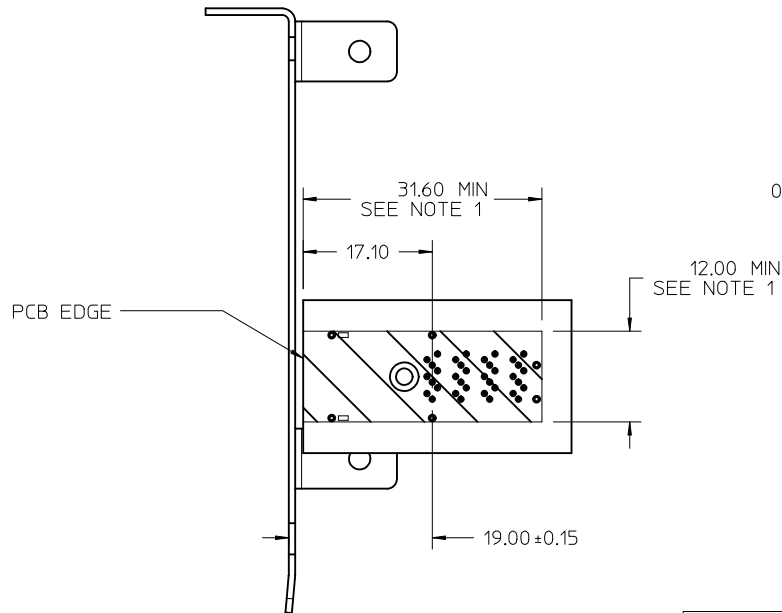
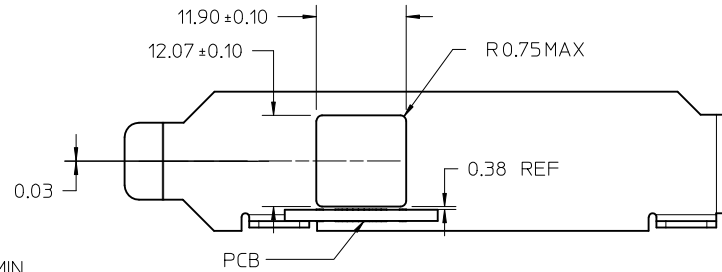


ILLUSTRATION OF
PCI ADD-IN CARD
BRACKET APPLICATION



PCB TO BRACKET VIEW



I/O BRACKET CUT OUT
(BRACKET NOT SUPPLIED)

NOTES:
1. CONNECTOR KEEP OUT AREA

SEE SHEET 1 EC NO: UCP2011-0564 DRW: MRSERWACKI 2010/08/30 CHKD: 2010/10/12 APPR: MBANAKIS	QUALITY SYMBOLS ▽=0 ▽=0	GENERAL TOLERANCES (UNLESS SPECIFIED) <table border="1"> <thead> <tr> <th></th> <th>mm</th> <th>INCH</th> </tr> </thead> <tbody> <tr> <td>4 PLACES</td> <td>± ---</td> <td>± ---</td> </tr> <tr> <td>3 PLACES</td> <td>± ---</td> <td>± ---</td> </tr> <tr> <td>2 PLACES</td> <td>± 0.13</td> <td>± ---</td> </tr> <tr> <td>1 PLACE</td> <td>± 0.25</td> <td>± ---</td> </tr> </tbody> </table>		mm	INCH	4 PLACES	± ---	± ---	3 PLACES	± ---	± ---	2 PLACES	± 0.13	± ---	1 PLACE	± 0.25	± ---	DIMENSION STYLE MM ONLY	SCALE 2:1	DESIGN UNITS METRIC	THIRD ANGLE PROJECTION
		mm	INCH																		
	4 PLACES	± ---	± ---																		
	3 PLACES	± ---	± ---																		
2 PLACES	± 0.13	± ---																			
1 PLACE	± 0.25	± ---																			
DESCRIPTION REV	DRAWN BY KLANG	DATE 2009/03/04	TITLE IPASS PLUS HD 1X1 ASSEMBLY																		
APPROVED BY MBANAKIS	DATE 2010/01/14	MOLEX INCORPORATED																			
MATERIAL NO. SEE CHART	DOCUMENT NO. SD-76866-001	SHEET NO. 2 OF 7	THIS DRAWING CONTAINS INFORMATION THAT IS PROPRIETARY TO MOLEX INCORPORATED AND SHOULD NOT BE USED WITHOUT WRITTEN PERMISSION																		

ALL OTHER M/B APPLICATIONS

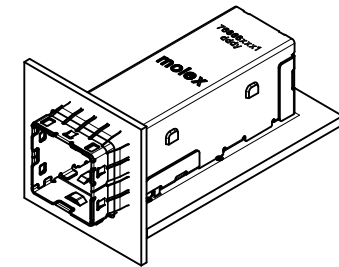
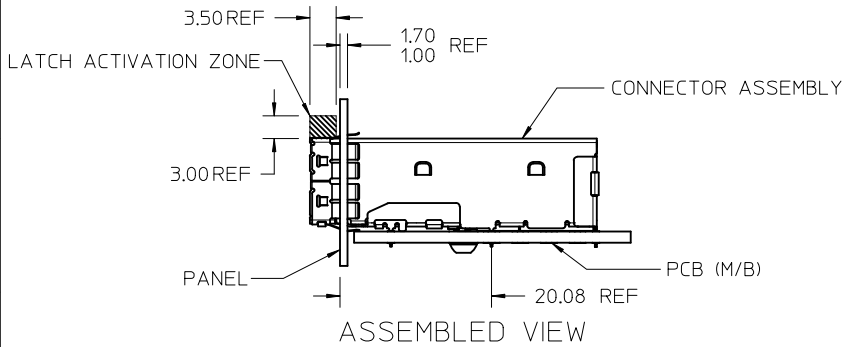
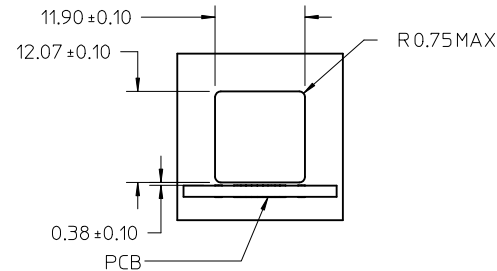
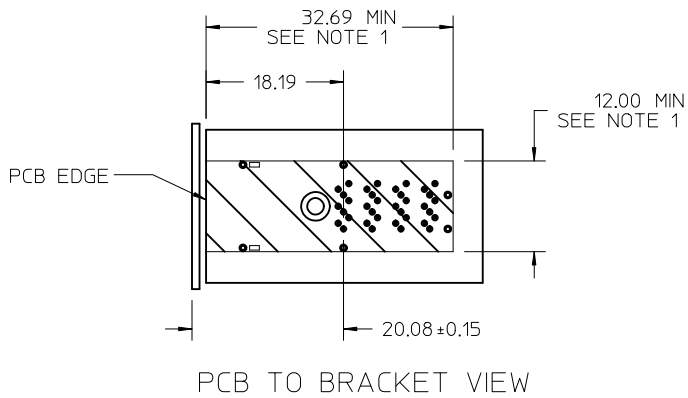


ILLUSTRATION OF ALL OTHER M/B BRACKET APPLICATION

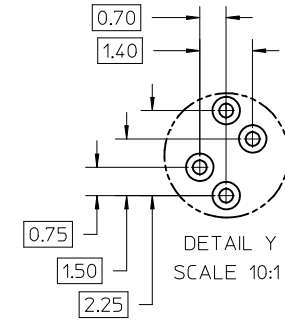
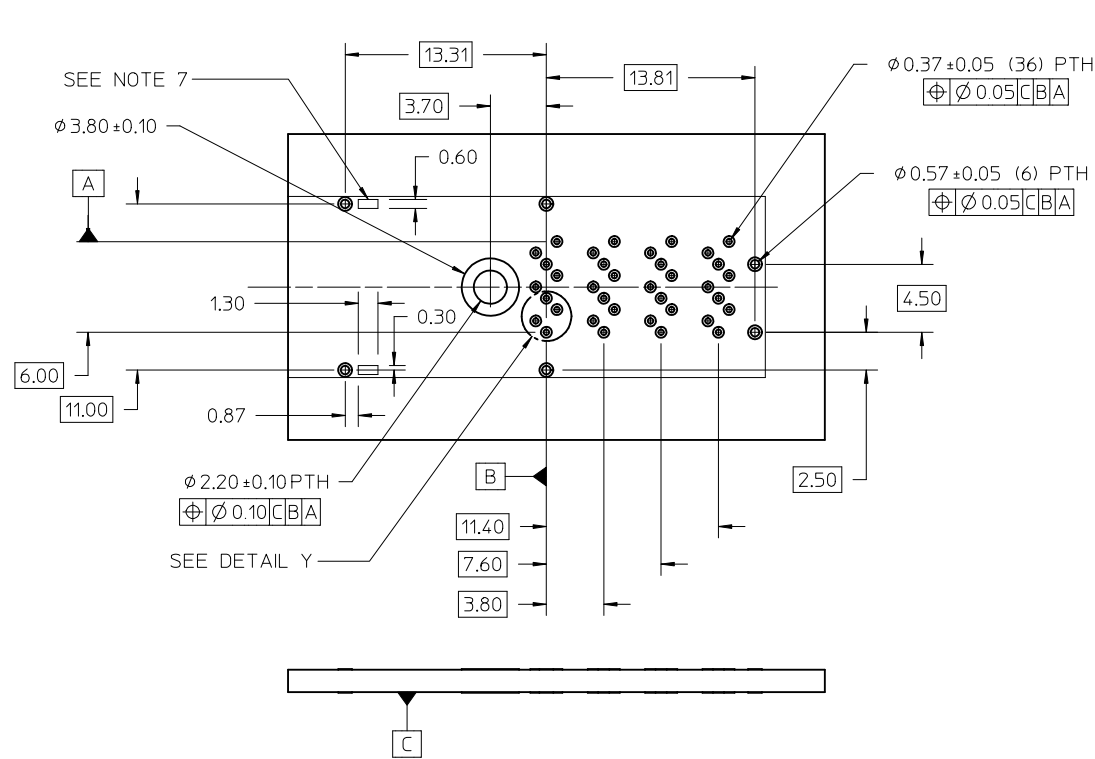


I/O BRACKET CUT OUT (BRACKET NOT SUPPLIED)

NOTES:
1. CONNECTOR KEEP OUT AREA

SEE SHEET 1 EC NO: UCP2011-0564 DRW: MRSERWACKI 2010/08/30 CHKD: 2010/10/12 APPR: MBANAKIS	QUALITY SYMBOLS ▽=0 ▽=0 ▽=0	GENERAL TOLERANCES (UNLESS SPECIFIED)		DIMENSION STYLE MM ONLY		SCALE 2:1	DESIGN UNITS METRIC	THIRD ANGLE PROJECTION			
				DRAWN BY KLANG	DATE 2009/03/04	TITLE IPASS PLUS HD 1X1 ASSEMBLY					
				CHECKED BY		DATE	APPROVED BY MBANAKIS				
				DATE		DATE 2010/01/14	DOCUMENT NO. SD-76866-001				
		ANGULAR ±1/2°		MATERIAL NO.		SIZE SEE CHART		SHEET NO. 3 OF 7			
		DRAFT WHERE APPLICABLE MUST REMAIN WITHIN DIMENSIONS		THIS DRAWING CONTAINS INFORMATION THAT IS PROPRIETARY TO MOLEX INCORPORATED AND SHOULD NOT BE USED WITHOUT WRITTEN PERMISSION							

RECOMMENDED FOOTPRINT



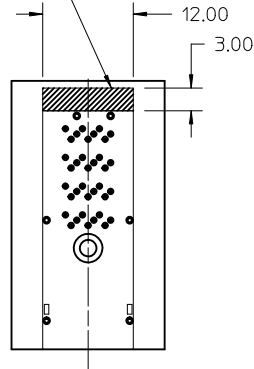
NOTES:

1. RECOMMENDED DRILL SIZE FOR A 0.37ϕ FINISHED PTH IS 0.48ϕ
2. RECOMMENDED ANNULAR RING AROUND 0.37ϕ FINISHED PTH IS 0.73ϕ
3. MINIMUM RECOMMENDED SPACING: 14.00MM
4. MINIMUM PCB THICKNESS: 1.57MM
5. RECOMMENDED DRILL SIZE FOR A 0.57ϕ FINISHED PTH IS 0.68ϕ
6. RECOMMENDED ANNULAR RING AROUND A 0.57ϕ FINISHED PTH IS 0.93ϕ
7. GAGE STAND OFF AREA, NO TRACES ON SURFACE OF PCB IN THESE AREAS

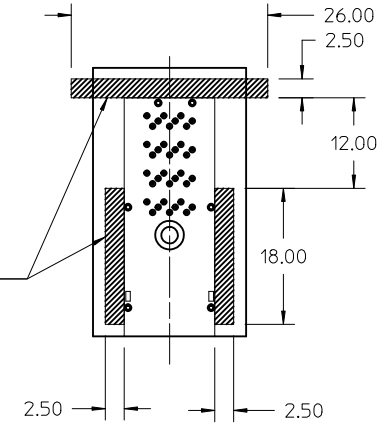
SEE SHEET 1 EC NO: UCP2011-0564 DRAWN: SERWACKI 2010/08/30 CHKD: 2010/10/12 APPR: MBANAKIS	QUALITY SYMBOLS	GENERAL TOLERANCES (UNLESS SPECIFIED)	DIMENSION STYLE	SCALE	DESIGN UNITS	THIRD ANGLE PROJECTION															
	$\nabla=0$ $\nabla=0$	<table border="1"> <thead> <tr> <th></th> <th>mm</th> <th>INCH</th> </tr> </thead> <tbody> <tr> <td>4 PLACES</td> <td>± 0.13</td> <td>± 0.005</td> </tr> <tr> <td>3 PLACES</td> <td>± 0.25</td> <td>± 0.010</td> </tr> <tr> <td>2 PLACES</td> <td>± 0.38</td> <td>± 0.015</td> </tr> <tr> <td>1 PLACE</td> <td>± 0.51</td> <td>± 0.020</td> </tr> </tbody> </table>		mm	INCH	4 PLACES	± 0.13	± 0.005	3 PLACES	± 0.25	± 0.010	2 PLACES	± 0.38	± 0.015	1 PLACE	± 0.51	± 0.020	MM ONLY	4:1	METRIC	
		mm	INCH																		
	4 PLACES	± 0.13	± 0.005																		
3 PLACES	± 0.25	± 0.010																			
2 PLACES	± 0.38	± 0.015																			
1 PLACE	± 0.51	± 0.020																			
DRAFT WHERE APPLICABLE MUST REMAIN WITHIN DIMENSIONS	DRAWN BY: KLANG DATE: 2009/03/04 CHECKED BY: _____ DATE: _____ APPROVED BY: MBANAKIS DATE: 2010/01/14 MATERIAL NO. _____ DOCUMENT NO. _____	TITLE: IPASS PLUS HD 1X1 ASSEMBLY MOLEX INCORPORATED SD-76866-001	SHEET NO. 4 OF 7																		
SEE CHART THIS DRAWING CONTAINS INFORMATION THAT IS PROPRIETARY TO MOLEX INCORPORATED AND SHOULD NOT BE USED WITHOUT WRITTEN PERMISSION																					

RECOMMENDED TOOLING KEEP OUT AREAS

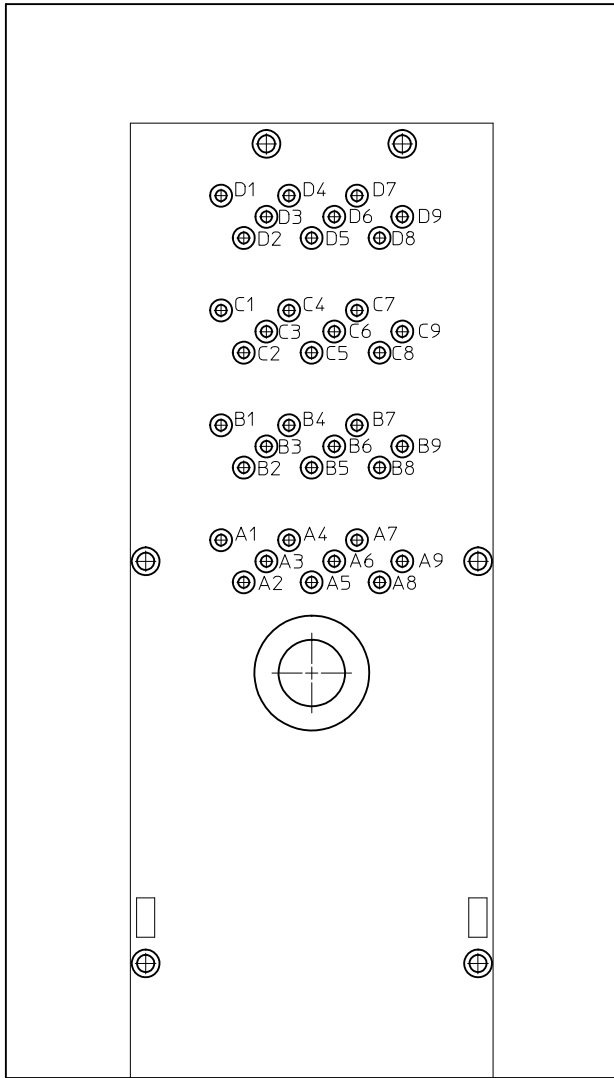
RECOMMENDED INSERTION TOOL
KEEP OUT AREA
NO COMPONENTS IN THIS AREA
MORE THAN 7.50 mm TALL



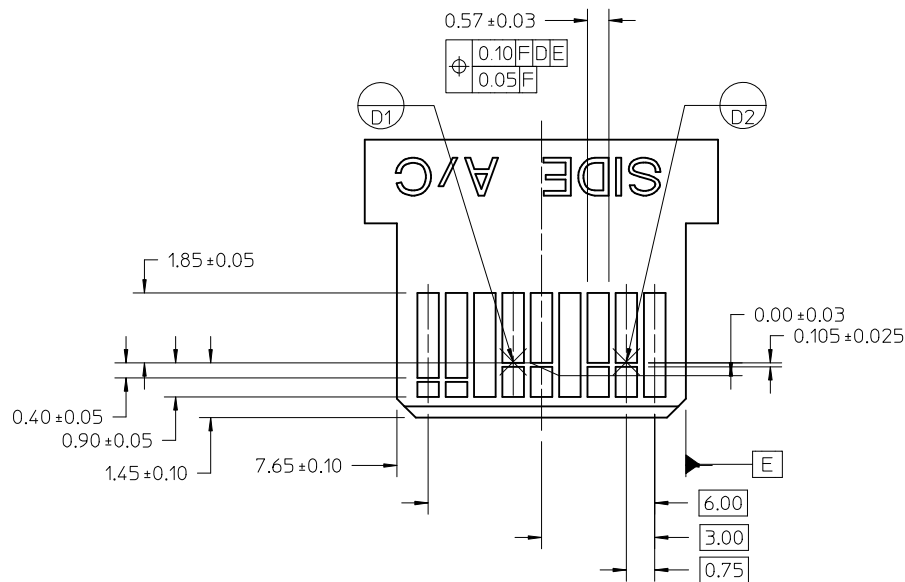
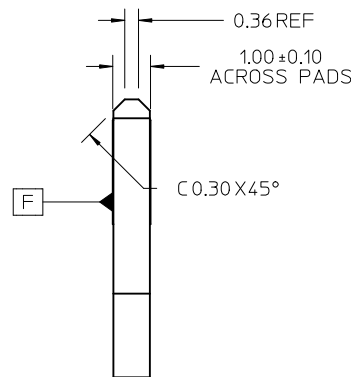
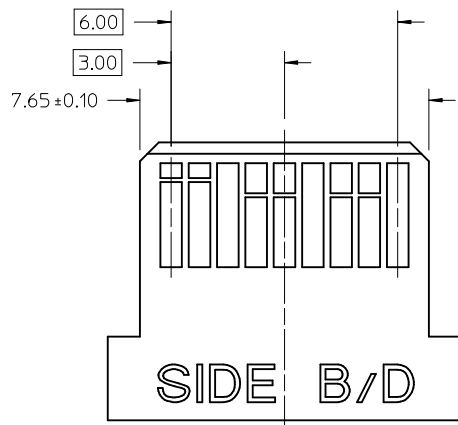
RECOMMENDED EXTRACTION TOOL
KEEP OUT AREA
NO COMPONENTS IN THESE AREAS



SEE SHEET 1 EC NO: UCP2011-0564 DRW: MRSERWACKI 2010/08/30 CHKD: 2010/10/12 APPR: MBANAKIS	QUALITY SYMBOLS	GENERAL TOLERANCES (UNLESS SPECIFIED)		DIMENSION STYLE	SCALE	DESIGN UNITS	THIRD ANGLE PROJECTION
	▽=0	mm	INCH	MM ONLY	2:1	METRIC	
	▽=0	4 PLACES ± --- ± ---	KLANG	DRAWN BY	DATE	TITLE	
	▽=0	3 PLACES ± --- ± ---	CHECKED BY	DATE	IPASS PLUS HD 1X1 ASSEMBLY		
	2 PLACES ± 0.13 ± ---	APPROVED BY		DATE	MOLEX INCORPORATED		
	1 PLACE ± 0.25 ± ---	MBANAKIS		2010/01/14	SD-76866-001		
	ANGULAR ± 1/2°	DRAFT WHERE APPLICABLE MUST REMAIN WITHIN DIMENSIONS		SEE CHART		DOCUMENT NO.	SHEET NO.
				THIS DRAWING CONTAINS INFORMATION THAT IS PROPRIETARY TO MOLEX INCORPORATED AND SHOULD NOT BE USED WITHOUT WRITTEN PERMISSION			5 OF 7



SEE SHEET 1 EC NO: UCP2011-0564 DRAWN BY: DRWINHSERWACKI 2010/08/30 CHKD: MBANAKIS 2010/10/12 APPR: MBANAKIS	QUALITY SYMBOLS =0 =0	GENERAL TOLERANCES (UNLESS SPECIFIED) <table border="1"> <thead> <tr> <th></th> <th>mm</th> <th>INCH</th> </tr> </thead> <tbody> <tr> <td>4 PLACES</td> <td>± .005</td> <td>± .0002</td> </tr> <tr> <td>3 PLACES</td> <td>± .005</td> <td>± .0002</td> </tr> <tr> <td>2 PLACES</td> <td>± 0.13</td> <td>± .005</td> </tr> <tr> <td>1 PLACE</td> <td>± 0.25</td> <td>± .010</td> </tr> </tbody> </table>		mm	INCH	4 PLACES	± .005	± .0002	3 PLACES	± .005	± .0002	2 PLACES	± 0.13	± .005	1 PLACE	± 0.25	± .010	DIMENSION STYLE MM ONLY DRAWN BY: KLANG DATE: 2009/03/04 CHECKED BY: DATE:	SCALE: 8:1 DESIGN UNITS: METRIC THIRD ANGLE PROJECTION	TITLE: IPASS PLUS HD 1X1 ASSEMBLY
		mm	INCH																	
	4 PLACES	± .005	± .0002																	
	3 PLACES	± .005	± .0002																	
2 PLACES	± 0.13	± .005																		
1 PLACE	± 0.25	± .010																		
DRAFT WHERE APPLICABLE MUST REMAIN WITHIN DIMENSIONS	ANGULAR ±1/2°	APPROVED BY: MBANAKIS DATE: 2010/01/14 MATERIAL NO.	MOLEX INCORPORATED DOCUMENT NO. SD-76866-001	SHEET NO. 6 OF 7																
SIZE: C	SEE CHART	THIS DRAWING CONTAINS INFORMATION THAT IS PROPRIETARY TO MOLEX INCORPORATED AND SHOULD NOT BE USED WITHOUT WRITTEN PERMISSION																		



- NOTES:
- 0.05 MINIMUM KEEP OUT FOR SOLDER MASK AROUND ALL PADS
 - DATUM D TARGETS ARE DEFINED BY THE RESPECTIVE PAD CENTER LINES AND THE LEADING EDGE OF THE TARGET PADS

SEE SHEET 1 EC NO: UCP2011-0564 DRAWN/SERWACKI 2010/08/30 CHKD: 2010/10/12 APPR: MBANAKIS	QUALITY SYMBOLS	GENERAL TOLERANCES (UNLESS SPECIFIED)	DIMENSION STYLE	SCALE	DESIGN UNITS	THIRD ANGLE PROJECTION
	▽=0 ▽=0	mm INCH	MM ONLY	4:1	METRIC	
		4 PLACES ± --- ± --- 3 PLACES ± --- ± --- 2 PLACES ± 0.13 ± --- 1 PLACE ± 0.25 ± ---	DRAWN BY DATE KLANG 2009/03/04	TITLE IPASS PLUS HD 1X1 ASSEMBLY		
	ANGULAR ± 1/2°	CHECKED BY DATE	APPROVED BY DATE MBANAKIS 2010/01/14			
			MATERIAL NO.		DOCUMENT NO.	
		DRAFT WHERE APPLICABLE MUST REMAIN WITHIN DIMENSIONS	SEE CHART		MOLEX INCORPORATED	
			SIZE C	SD-76866-001		SHEET NO. 7 OF 7
			THIS DRAWING CONTAINS INFORMATION THAT IS PROPRIETARY TO MOLEX INCORPORATED AND SHOULD NOT BE USED WITHOUT WRITTEN PERMISSION			