


**CUSTOMER:**
**CUSTOMER PN:**
**GPN:** E81D800VNN103MA80T

**DRAWING NO.:** 963815

**ELECTRICAL CRITERIA**

CAPACITANCE (120Hz/20°C): 10000  $\mu$ F  
 CAP.TOLERANCE:  $\pm 20\%$   
 RATED VDC: 80 V  
 SURGE VDC (30 sec): 100 V  
 MAX. ESR (120Hz/20°C): 23 m $\Omega$   
 MAX. IRMS (120Hz/85°C): 12.6 A  
 MAX. DCL (V<sub>DC</sub>/5:00/20°C): 3.578 mA

**MECHANICAL CRITERIA**

MAX. VIBRATION: 10-55Hz 10g

**OPERATING CRITERIA**

MAX. TEMPERATURE: +105 °C  
 MIN. TEMPERATURE: -40 °C  
 LOAD LIFE (VDC/105°C): 2000 Hrs  
 MAX.  $\Delta$  CAP. (measured value):  $\leq 15\%$   
 MAX.ESR  $\delta$  (specified value):  $\leq 1.5 \times$   
 MAX. DCL (V<sub>DC</sub>/5:00/20°C): 3.578 mA  
 SHELF LIFE (85°C): 500 Hrs  
 MAX.  $\Delta$  CAP. (measured value):  $\leq 15\%$   
 MAX. ESR  $\delta$  (specified value):  $\leq 1.3 \times$   
 MAX. DCL (V<sub>DC</sub>/5:00/20°C): 7.156 mA

**IRMS FREQUENCY MULTIPLIERS**

VDC	50-60Hz	300-1kHz	$\geq 1k$
0-50	0.85	1.10	1.15
49-199	0.83	1.15	1.20
200-400	0.80	1.30	1.40

**IRMS AMBIENT MULTIPLIERS**

55°C	65°C	75°C	85°C	95°C	105°C
1.50	1.34	1.20	1.00	0.77	0.45

**SPECIAL**

RoHS Compliant

---



---



---



---



---



---



---



---



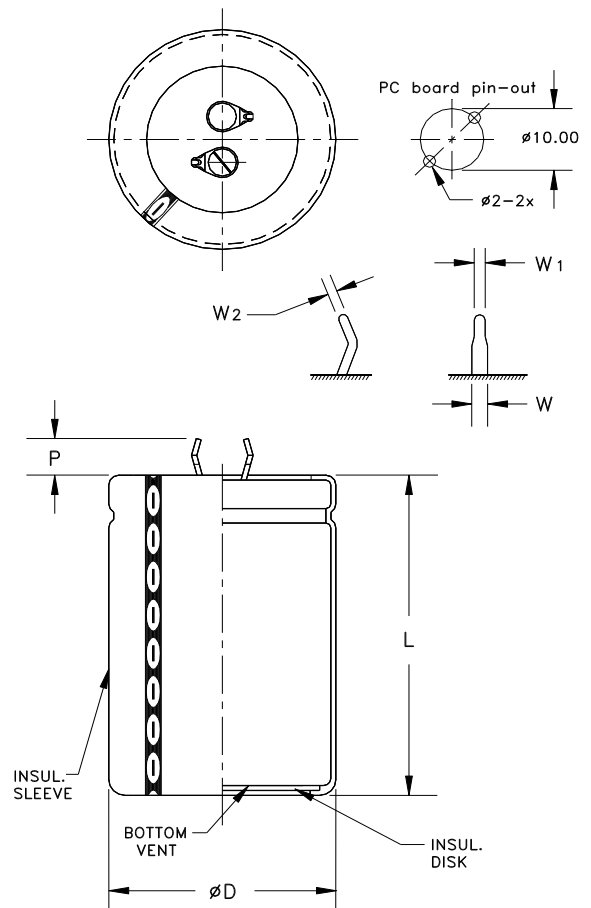
---



---

DIMENSIONAL CRITERIA			
X	mm	in	
$\varnothing D$	35.0	- NA	+ 1.0
L	80.0	- 2.0	+ 2.0
P	5.8	- 1.0	+ 1.0
W	1.5	- 0.2	+ 0.2
W1	1.0	- 0.1	+ 0.1
W2	1.0	- 0.1	+ 0.1

MARKING	
	81D 105°C
	10000uF(M) 80V
	Date Code



TDS NO.: TDS-06-0351-01  
 AUTHOR: TMASH  
 DATE: 16-APR-2014