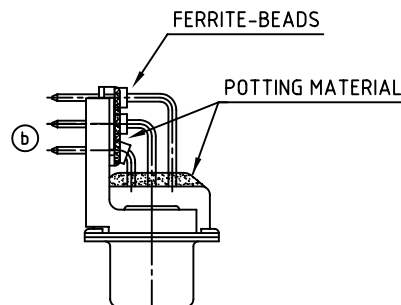
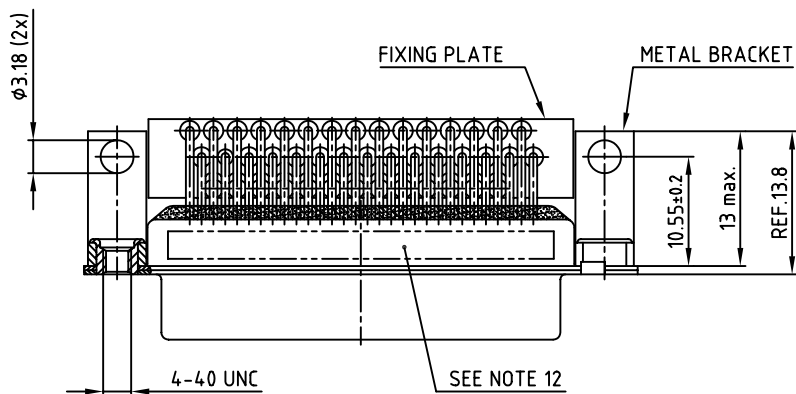
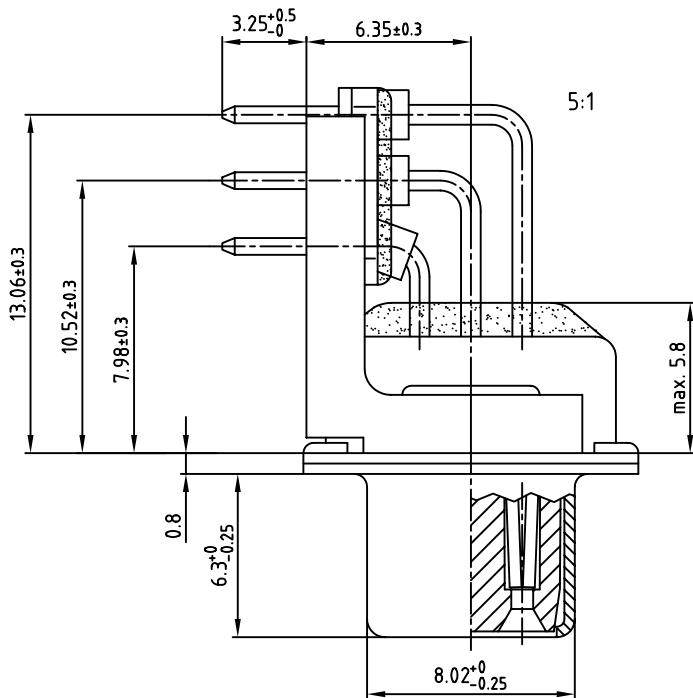
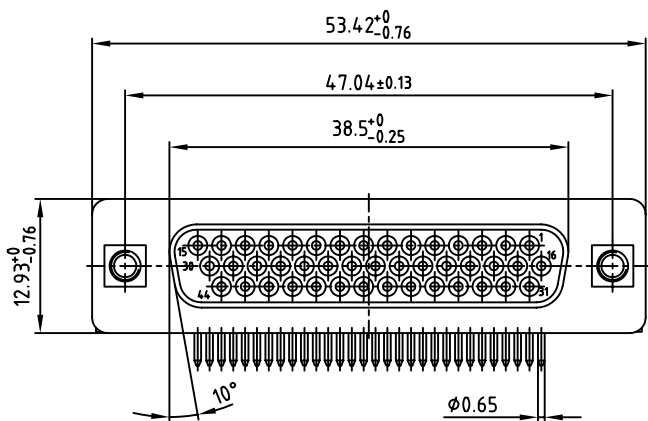
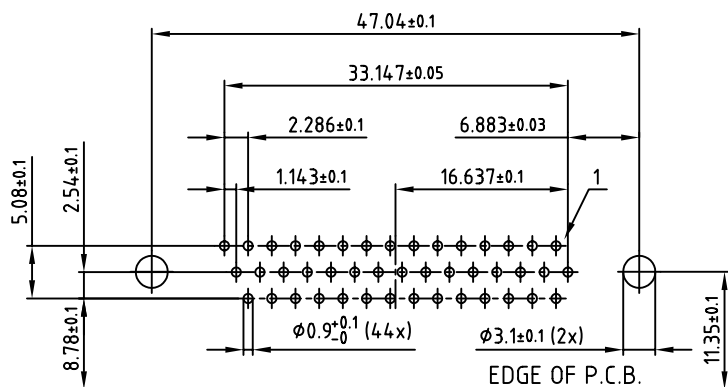


used for: D-SUB FILTER HD

CAPACITANCE 180pF ±20%	CAPACITANCE 370pF ±20%	CAPACITANCE 830pF ±20%
242A26600X	242A25640X	242A25680X



P.C.B. HOLE PATTERN



NOTES:

- RoHS COMPLIANT
- SUIABLE FOR WAVE SOLDERING
- METALSHELLS: STEEL; min. 315µm TIN over 40-80µm NICKEL
- INSULATORS: HIGH TEMPERATURE PLASTIC UL 94 V-0, BLACK
- CONTACTS: COPPER ALLOY
PLATING: 8µm HARD GOLD OVER min. 50µm NICKEL
- METAL BRACKET: STEEL; min. 320µm TIN over 80µm NICKEL
- THREADED INSERT: COPPER ALLOY; min. 200µm TIN over 80µm NICKEL
- FIXING-PLATE: PBT GF UL 94 V-0, BLACK
- CAPACITANCE: SEE TABLE
- DIELECTRIC WITHSTANDING VOLTAGE: 300 VDC
- MAXIMUM TORQUE VALUE FOR THREAD: 6in.LB
- CONNECTOR IS PART MARKED: PART-NÖ. CONEC ABC



APPROVAL # FREIGABE # DEBLOCAGE # AUTORIZACION # APPROVAL	
CUSTOMER APPROVAL DATE:	
NAME:	TITLE:
COMPANY NAME:	
APPROVAL # FREIGABE # DEBLOCAGE # AUTORIZACION # APPROVAL	

THIS DRAWING MAY NOT BE COPIED OR REPRODUCED IN ANY WAY, AND MAY NOT BE PASSED ON TO A THIRD PARTY, WITHOUT WRITTEN PERMISSION. OWNERSHIP AND COPYRIGHT OF CONEC GmbH. DO NOT ALTER CAD DRAWING BY HAND

2 x b	Ä2933	25.02.2008	Sonne
a	Origin		
rev.	description	date	name

tolerance		scale:	2:1 (5:1)
	dim. in mm	material:	SEE NOTES
2005	date	name	
drawn	09.02.	Lehmenkühler	
appd.	09.02.	Mickenbecker	
norm			
d-old			

title:	D-SUB HD FILTER FEMALE 90° 44pos. 0.350inch with metal bracket and threaded insert
dwg no:	AutoCAD 2004 DIN-A 3 sh: 1/1
part no:	SEE TABLE

