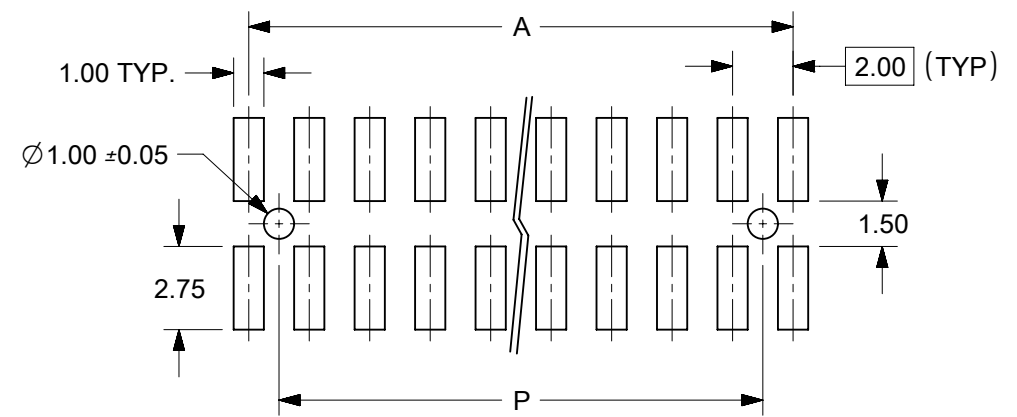
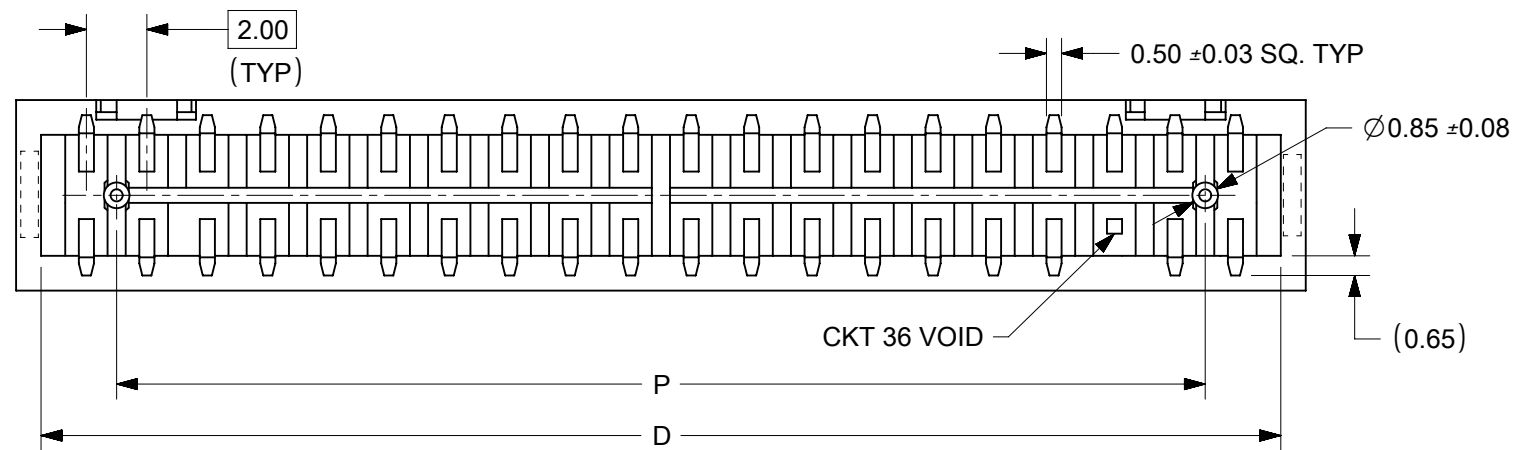
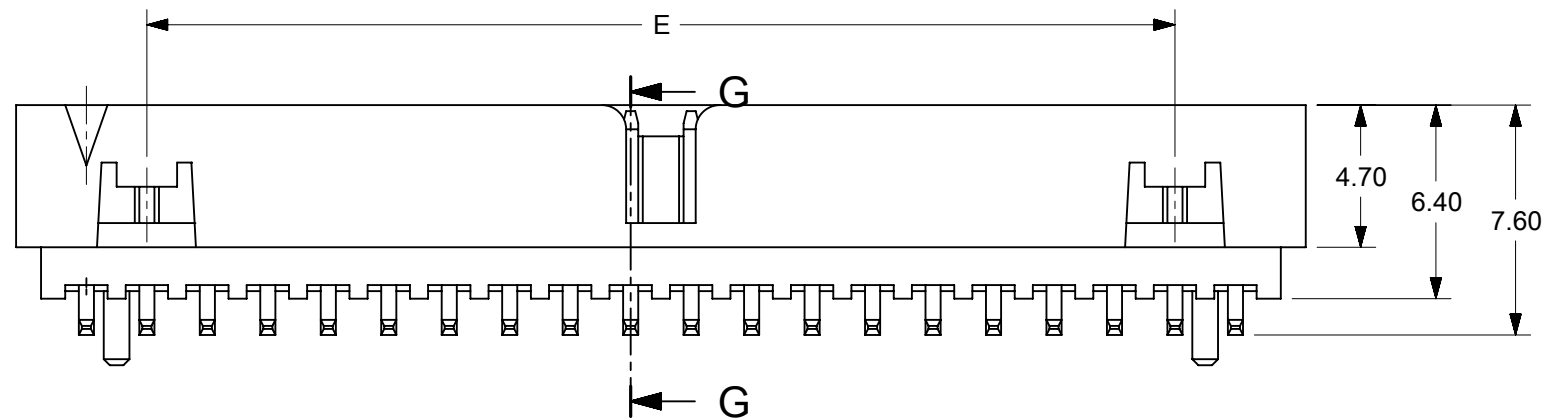
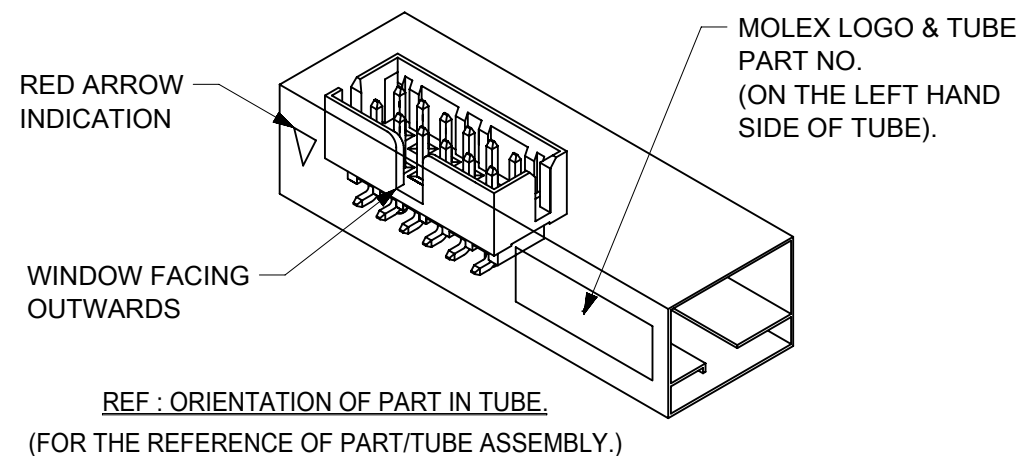


SECTION G-G



RECOMMENDED PCB PATTERN



THIS DRAWING CONTAINS INFORMATION THAT IS PROPRIETARY TO MOLEX ELECTRONIC TECHNOLOGIES, LLC AND SHOULD NOT BE USED WITHOUT WRITTEN PERMISSION										
ADDED BTB DIST. EC NO: 619055 DRWN: HK02 CHKD: NMANE02 REV APPR: MRAMAKRISHNA	2019/05/15	2019/07/09	2019/07/09	GENERAL TOLERANCES (UNLESS SPECIFIED)		DIMENSION UNITS		SCALE		
				MM	INCH	MM	NTS	<p>MGRID, SHROUDED HEADER W/SLOT, STANDOFF, SMT LOCATING PEG W/ VOID</p> <p>PRODUCT CUSTOMER DRAWING</p> <p>SERIES: 87832 MATERIAL NUMBER: SEE TABLE CUSTOMER: GENERAL MARKET</p> <p>DOCUMENT NUMBER: SD-87832-017 DOC TYPE: PSD DOC PART: 001 SHEET NUMBER: 1 OF 3</p>		
	4 PLACES	±	±	DRWN BY	DATE	ATSEE	2004/09/29			
	3 PLACES	±	±	CHK'D BY	DATE	KCLING	2004/11/03			
	2 PLACES	± 0.2	±	APPR BY	DATE	SKTOH	2004/11/05			
1 PLACES	±	±	DRAWING SIZE	THIRD ANGLE PROJECTION	A3					
0 PLACES	±	±	ANGULAR TOL = 3.0		DRAFT WHERE APPLICABLE MUST REMAIN WITHIN DIMENSIONS					

PART NO.	VOID PIN	PLATING OPTION	CKT SIZE	DIMENSION					
				A	B	C	D	E	P
87832-7000	36	1	40	38.00	40.85	42.65	41.00	34.00	36.00
87832-5121	13	2	26	24.00	26.85	28.65	27.00	20.00	22.00

NOTES :


1. MATERIAL:

HOUSING: 30% G.F., NYLON 46 UL94V-0, COLOR BLACK
 PIN: 0.50mm SQ. PHOSPHOR BRONZE

2. PLATING:

1. 0.38µm/ 15µin GOLD IN CONTACT AREA AND
 1.88µm/ 75µin MIN. TIN IN SOLDERTAIL AREA OVER
 1.27µm/ 50µin MIN. NICKEL OVERALL.
2. 0.76µm/ 30µin GOLD IN CONTACT AREA AND
 1.88µm/ 75µin MIN. TIN IN SOLDERTAIL AREA OVER
 1.27µm/ 50µin MIN. NICKEL OVERALL.


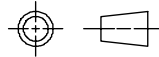
3. PRODUCT SPECIFICATION PS-87831-027 APPLIES.

4.  COPLANARITY IS TO BE MEASURED BY RESTING THE SOLDER TAIL ON A GAUGE SURFACE.

5. THIS HEADER MATES WITH MOLEX:

- a) CRIMP RECEPTACLE HOUSING, 51110 SERIES WITH CRIMP TERMINAL, 50394 SERIES.
- b) 2mm MILLIGRID DUAL ROW IDT, 87568 SERIES.

THIS DRAWING CONTAINS INFORMATION THAT IS PROPRIETARY TO MOLEX ELECTRONIC TECHNOLOGIES, LLC AND SHOULD NOT BE USED WITHOUT WRITTEN PERMISSION

ADDED BTB DIST. EC NO: 619055 DRWN: HK02 CHK'D: NMANE02 REV APPR: MRAMAKRISHNA	GENERAL TOLERANCES (UNLESS SPECIFIED)		DIMENSION UNITS		SCALE							
		MM	INCH	MM	NTS							
	4 PLACES	±	±	DRWN BY		DATE		MGRID, SHROUDED HEADER W/SLOT, STANDOFF, SMT LOCATING PEG W/ VOID				
	3 PLACES	±	±	ATSEE		2004/09/29						
	2 PLACES	± 0.2	±	CHK'D BY		DATE						
	1 PLACES	±	±	KCLING		2004/11/03		PRODUCT CUSTOMER DRAWING				
0 PLACES	±	±	APPR BY		DATE							
ANGULAR TOL = 3.0			DRAWING SIZE		THIRD ANGLE PROJECTION		SERIES		MATERIAL NUMBER		CUSTOMER	
DRAFT WHERE APPLICABLE MUST REMAIN WITHIN DIMENSIONS			A3				87832		SEE TABLE		GENERAL MARKET	
DOCUMENT NUMBER							DOC TYPE		DOC PART		SHEET NUMBER	
SD-87832-017							PSD		001		2 OF 3	

RELEASE STATUS	P1	RELEASE DATE	2019/07/09	06:47:59
----------------	----	--------------	------------	----------

BOARD TO BOARD (BTB) DISTANCE

HEADER	MATES WITH (RECEPTACLE)	BTB DIST.	PICTORIAL VIEW
87832	79107	8.14	
	78787	8.14	
	79108	8.14	
	79109	8.35	
	78788	8.35	

THIS DRAWING CONTAINS INFORMATION THAT IS PROPRIETARY TO MOLEX ELECTRONIC TECHNOLOGIES, LLC AND SHOULD NOT BE USED WITHOUT WRITTEN PERMISSION													
DIMENSION UNITS		SCALE		CURRENT REV DESC: ADDED BTB DIST.						molex			
mm		1:1											
GENERAL TOLERANCES (UNLESS SPECIFIED)				EC NO: 619055		2019/05/15		MGRID, SHROUDED HEADER W/SLOT, STANDOFF, SMT LOCATING PEG W/ VOID					
				DRWN: HK02		2019/07/09							
				CHK'D: NMANE02		2019/07/09		PRODUCT CUSTOMER DRAWING					
				APPR: MRAMAKRISHNA		2019/07/09							
				INITIAL REVISION:				DOCUMENT NUMBER		DOC TYPE	DOC PART	REVISION	
				DRWN: DRWN BY		XXXX/XX/XX		SD-87832-017		PSD	001	A6	
				APPR: APPR BY		XXXX/XX/XX							
ANGULAR TOL ± 3.0°				DRAFT WHERE APPLICABLE MUST REMAIN WITHIN DIMENSIONS		THIRD ANGLE PROJECTION		DRAWING		SERIES	MATERIAL NUMBER	CUSTOMER	SHEET NUMBER
								A3-SIZE		87832	GENERAL MARKET		3 OF 3