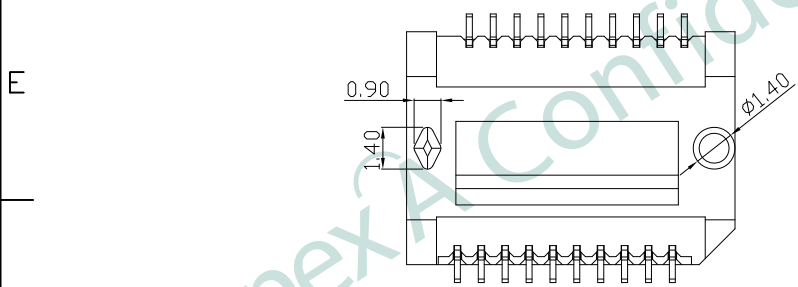
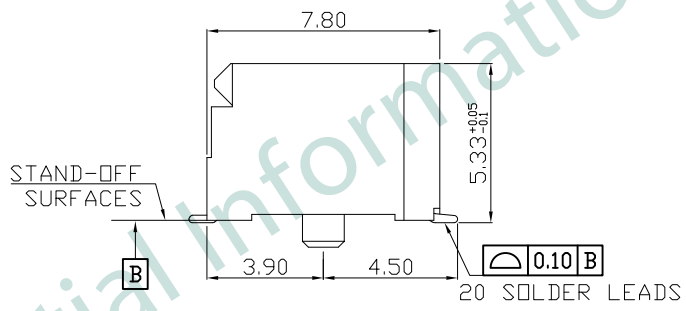
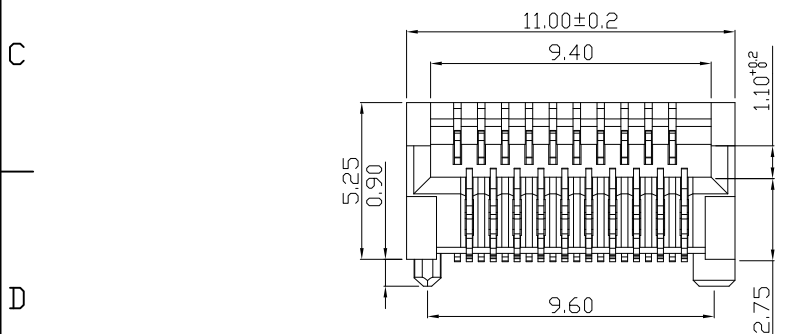
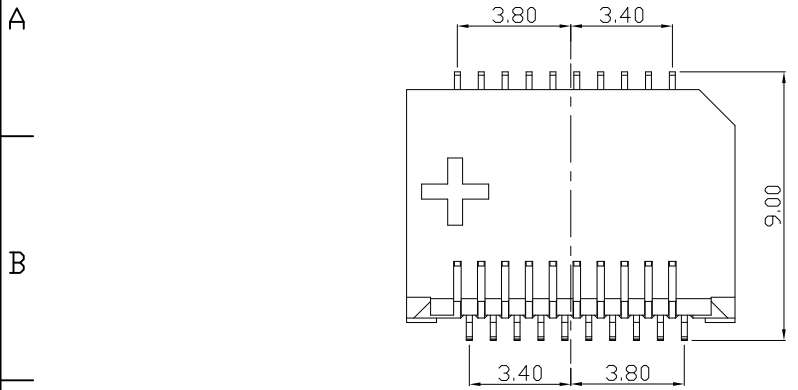


REV.	DATE	DESCRIPTION
01	Jul. 05, '18	1st RELEASE



- NOTES:
- MATERIAL:
HOUSING: LCP, UL94V-0, BLACK
CONTACT: C5210R-EH, T=0.20mm
 - DURABILITY TEST: 100 CYCLES MIN.
 - SPECIFICATION:
DIELECTRIC STRENGTH: AC 300V/MINUTE
INSULATOR RESISTANCE: 500 Mohm MIN.
CONTACT RESISTANCE: 40 mohm MAX.
OPERATING TEMPERATURE: -40°C~+85°C
 - UNSPECIFIED TOLERANCE: .XX ±0.25
.XXX ±0.10

PART NO		KSFP-N-PSM0-2002		
TITLE	SFP+ CONNECTOR, PITCH 0.80mm, 20 PIN SMT TYPE			
REV : 01				
UNIT	DRAWN	CHKD	DATE	SHEET
mm[inch]	CINDY	VINCENT	Jul. 05, '18	1 of 2

DWG NO KSFP-N-PSM0-2002

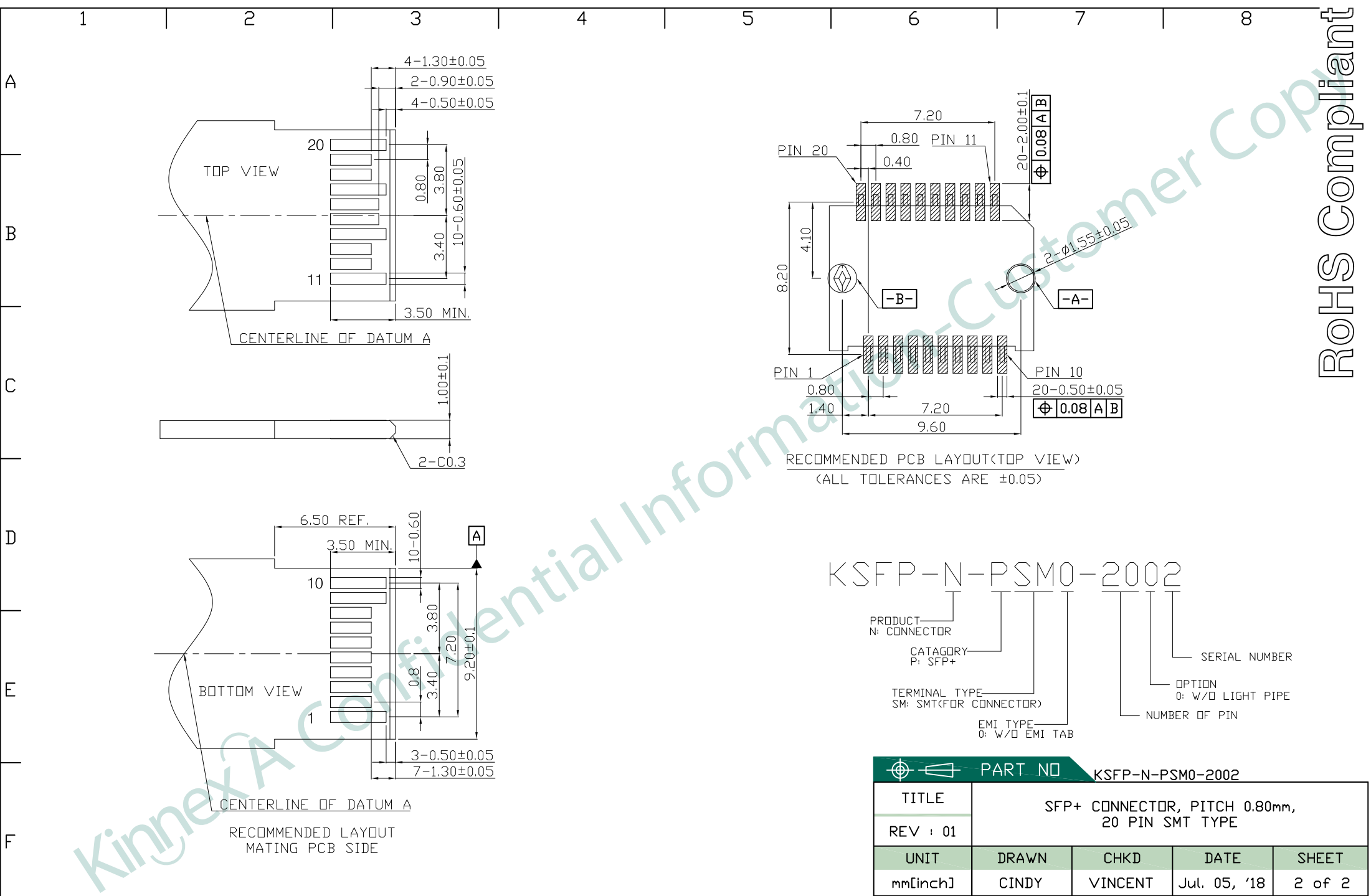
KinnexA, INC. 8F, No. 172, CHENG TEH ROAD SEC. 4, TAIPEI 11167, TAIWAN

PRELIMINARY RELEASE SUBJECT TO CHANGE

※ THIS DRAWING IS A CONTROLLED DOCUMENT ※

Connected by **KinnexA**

ROHS Compliant



PART NO: KSFP-N-PSM0-2002				
TITLE	SFP+ CONNECTOR, PITCH 0.80mm, 20 PIN SMT TYPE			
REV : 01				
UNIT	DRAWN	CHKD	DATE	SHEET
mm[inch]	CINDY	VINCENT	Jul. 05, '18	2 of 2