

PART NUMBER	REV	FIRST USED	TERMINATOR	FEED TYPE	DESCRIPTION
1339752-1	B		-BENCH & LEADMAKER	MECH POST FEED	HD-I APPLICATOR
7-1339752-1	B		-BENCH & LEADMAKER	MECH POST FEED	-1 AND SPARE PARTS
7-1339752-7	B		-	-	SPARE PARTS KIT

CRIMP DATA ESCUBEDO TERMINAL AMP CRIMP SPECS
TERMINAL NAME: FASTON TYPE 6.3MM SERIES.

CRIMP	SIZE	TYPE	RANGE
WIRE	3.94 [.155 IN]	F	2.5mm ² - 6.0mm ²
INSUL	5.08 [.200 IN]	F	3.80-5.00 [.150-.197 IN]
WIRE STRIP LENGTH		APPL INSTRUCTION	
4.80-5.60 [.189-.220 IN]		408-8323	

TERMINAL APPL SPEC	FEED
NONE	21.40 [.843 IN]

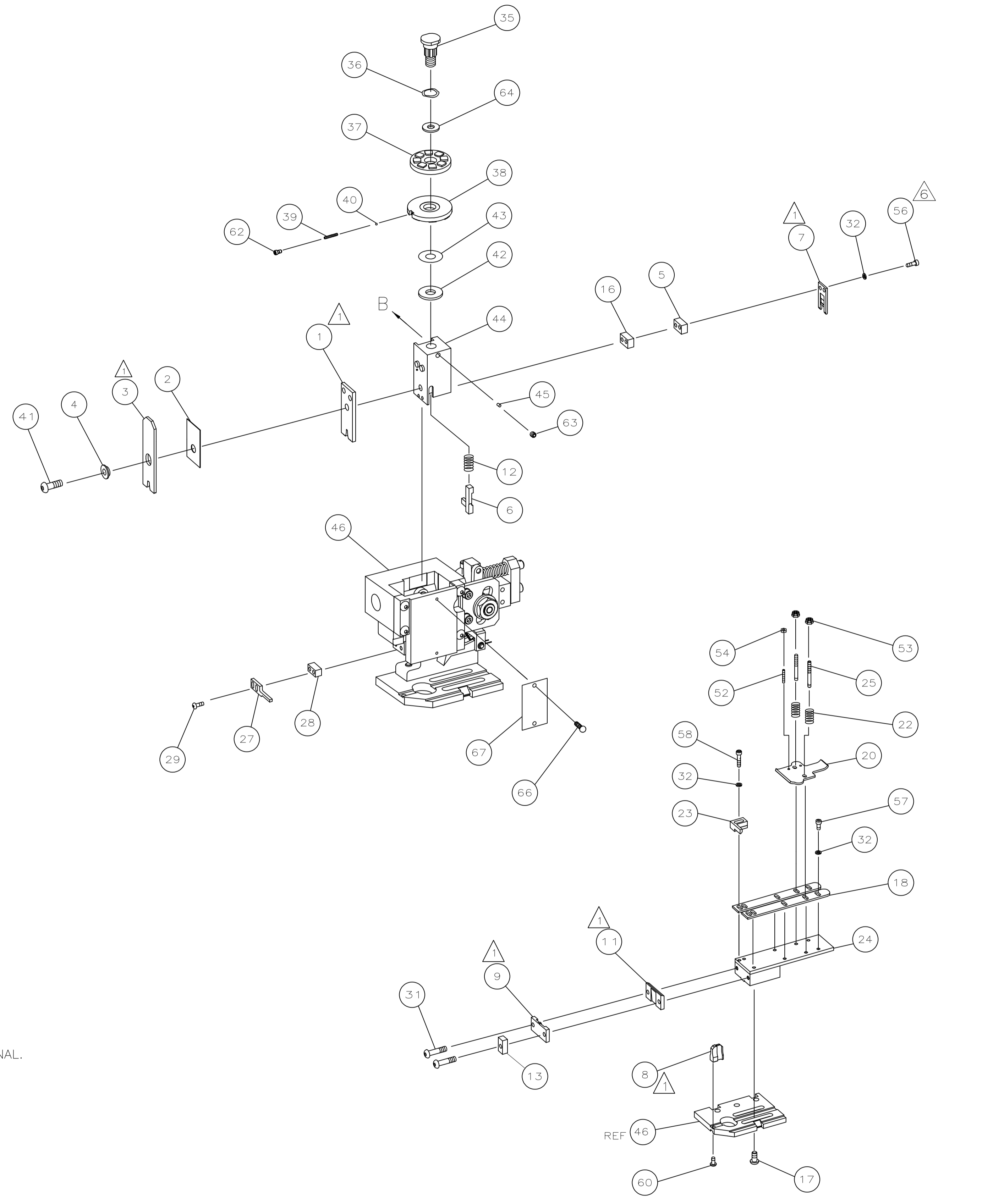
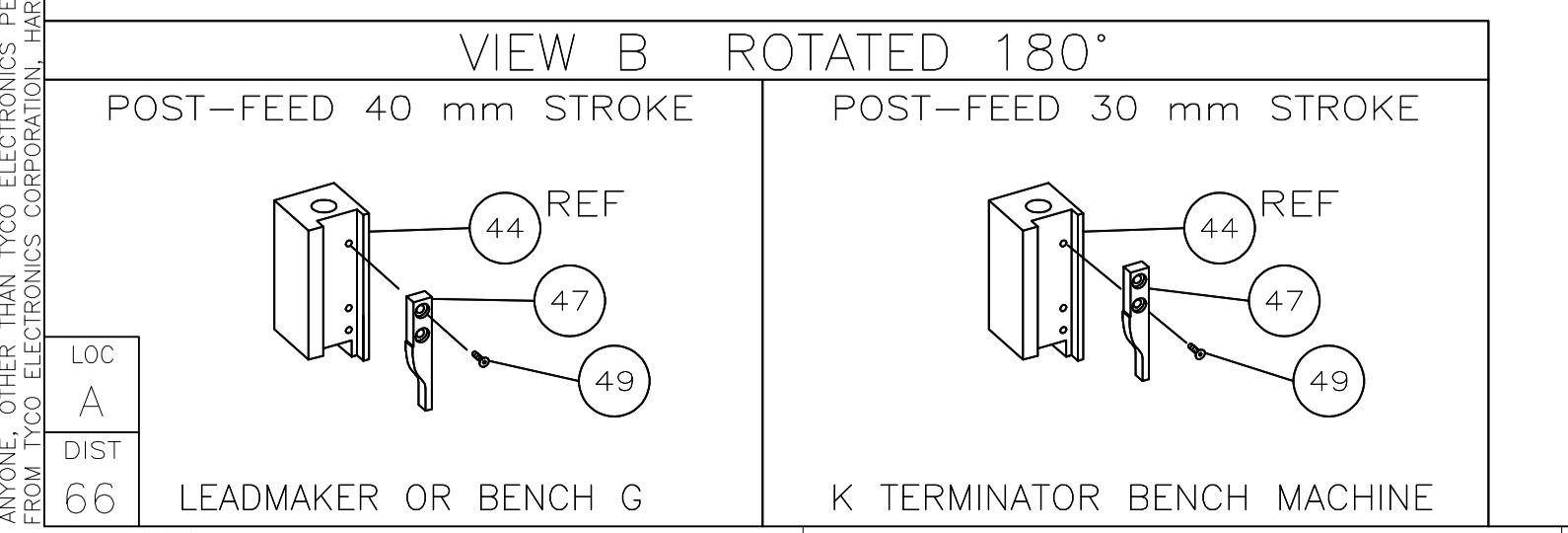
TERMINALS APPLIED

AMP PN	MFR PN	AMP PN	MFR PN
1572583-1	4346.00	1572584-1	4425.00
1572583-2	4346.02	1572584-2	4425.02
1572583-3	4346.30	1572584-3	4425.30
1572583-4	4346.32	1572584-4	4425.32

WIRE SIZE mm ² AWG	CRIMP HEIGHT	PIN PN AND LENGTH [IN]
6.0mm ²	2.79 ±0.05 [.110 ±.002 IN]	1-354778-7 [.2580]
4.0mm ²	2.41 ±0.05 [.095 ±.002 IN]	5-354778-1 [.2750]
2.5mm ²	2.13 ±0.05 [.084 ±.002 IN]	7-354778-1 [.2850]

SET UP GAGE	LAYOUT
458638-3	L1339752

- 1 RECOMMENDED SPARE PARTS.
- 2. GREASE RAM, CAM, CAM FOLLOWER AND FEED ROD LIGHTLY.
- 3. LUBRICATE DAILY PER THE APPLICATOR INSTRUCTION SHEET SUPPLIED WITH THE APPLICATOR.
- 4 WIRE AND INSULATION RANGES QUOTED ARE THAT OF THE TERMINAL.
- 5 CRIMP DATA CALCULATED BY TYCO.
- 6 CUT TO LENGTH AT ASSEMBLY.



QTY	REQD	PER	ASSY	PART NO	DESCRIPTION	ITEM NO
-	1	1		1339752	PRINT, APPLICATOR LOG SHEET	73
-	1	1		1338705-2	DOCUMENTATION PACKAGE	72
						70
						69
						68
-	1	1		461264-1	PLATE, IDENTIFICATION	67
-	2	2		21017-2	SCR,DRIVE(#2X.19)ID PLATE	66
						65
-	1	1		986950-1	WASHER, FLAT PRECISION	64
-	1	1		3-18031-0	SCR,SKT SET(M6X6)RAM	63
-	1	1		18023-9	SCR,SKT CAP(M4X6)CP DSC	62
						61
-	1	1		18024-7	SCR,BHC(M4X10)ANVIL	60
						59
-	2	2		1-18023-4	SCR,SHC(M4X20)HOLD DOWN	58
-	5	5		1-18023-0	SCR,SHC(M4X8)STRIP GUIDE	57
-	2	2		9-18023-6	SCR,SHC(M4X14)SLUG BLADE	56
						55
-	2	2		18029-1	NUT,HEX(M3)DRAG	54
-	2	2		986965-1	NUT,HEX SL(M4)DRAG STUD	53
-	2	2		2-18032-2	SCR,SKT SET(M3X10)DRAG	52
						51
						50
-	1	1		18024-3	SCR,BHC(M3X10)CAM	49
						48
-	1	1		1338676-1	CAM, POST-FEED 30 & 40 mm ST	47
-	1	1		1338662-2	APPLICATOR, BASIC (SUBASSY)	46
-	1	1		690191-1	PLUG, NYLON	45
-	1	1		1320998-1	RAM	44
-	1	1		690125-1	WASHER, LAMINATED	43
-	1	1		690124-1	WASHER, RAM	42
-	1	1		2-18024-6	SCREW,BHC(M8X25)CRIMPER	41
-	1	1		23241-1	BALL, STEEL	40
-	1	1		2-22278-7	SPRING, COMPRESSION	39
-	1	1		1320922-1	DISC, INSULATION	38
-	1	1		354777-1	WIRE DISC, PLASTIC	37
-	1	1		22480-5	WASHER, SPRING	36
-	1	1		690212-1	POST, RAM	35
						34
						33
-	9	9		18025-2	WASHER,LOCK(M4)SHEAR BL	32
-	2	2		1-18024-0	SCR,BHC(M4X20)SHEAR PL	31
						30
-	2	2		18024-8	SCR,BHC(M4X12)STRIPPER	29
-	1	1		3-690451-2	SPACER, STRIPPER	28
-	1	1		2-576128-2	STRIPPER	27
						26
-	2	2		1320906-1	DRAG, STUD	25
-	1	1		1320995-3	PLATE, STRIP GUIDE	24
-	1	1		240825-3	PLATE, STRIP HOLD DOWN	23
-	2	2		4-22281-1	SPRING, DRAG	22
						21
-	1	1		1338665-1	DRAG, STOCK	20
						19
-	2	2		1338663-8	GUIDE, LOWER STRIP	18
-	4	4		1-18024-8	SCR,BHC(M6X12)STRIP GD PL	17
-	1	1		1338708-1	SPACER, SLUG BLADE	16
						15
						14
-	1	1		690481-2	SPACER, HOLD DOWN	13
-	1	1		23846-1	SPRING, HOLD DOWN	12
-	1	1		240833-2	PLATE, REAR SHEAR	11
						10
-	1	1		3-690495-2	PLATE, FRONT SHEAR	9
1	2	1		2-133223-7	ANVIL	8
-	1	1		690474-7	BLADE, SLUG	7
-	1	1		1-455892-1	HOLD DOWN, TERMINAL	6
-	1	1		6-240641-9	SPACER, SLUG BLADE	5
-	1	1		238009-1	SPACER, BLOCK CRIMPER	4
1	2	1		6-1213077-8	CRIMPER, INSULATION	3
-	1	1		1-455888-1	SPACER, CRIMPER	2
1	2	1		456426-1	CRIMPER, WIRE	1

QTY REQD PER ASSY

PARTS LIST

DWN	14SEP04	MATERIAL		HEAT TREAT	
CHK					
APVD	14SEP04				
F.BACKHURST					
NAME					
END FEED HD-I APPLICATOR					
SCALE	SIZE	DRAWING NO	SHEET	REV	
	A1	1339752	1 of 1	B1	

3308-8 (1/08)

CUSTOMER ACCESSIBLE PRODUCTION DRAWING