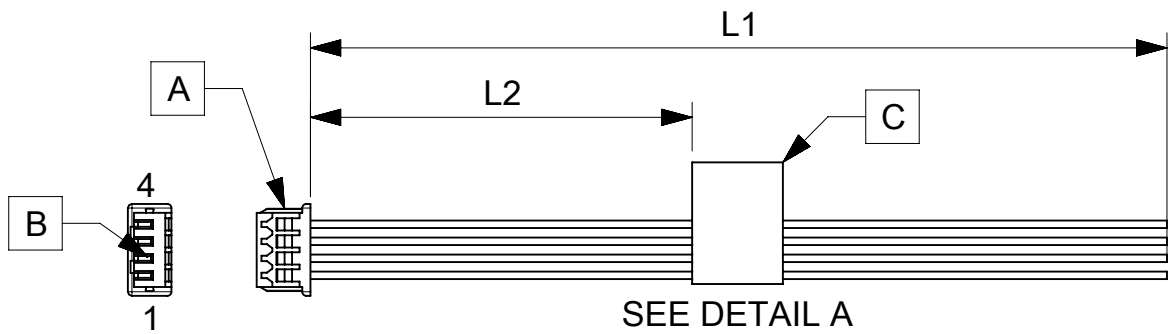


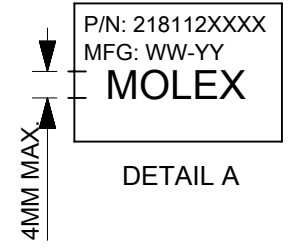
ITEM	PART#	DESCRIPTION	QTY	UOM
A	510210400	PicoBlade1.25 Rec Hsg 4P	1	PC
B	500588000	PicoBlade1.25 Crimp Rec Term Chain Tin	4	PC
C	--	Blank label 12.7x35.5mm (WHT:12.7mm) HF	1	PC

FROM	TO	DESCRIPTION	COLOR
A1	--	CABLE 28 AWG UL 1061 BLACK	BLACK
A2	--	CABLE 28 AWG UL 1061 BLACK	BLACK
A3	--	CABLE 28 AWG UL 1061 BLACK	BLACK
A4	--	CABLE 28 AWG UL 1061 BLACK	BLACK



SEE DETAIL A

TABLE			
PART NUMBER	L1	L2 (REF)	TITLE
2181120400	75±5	30	4 CIRCUIT PICOBLADE R:BLUNT CABLE 75MM
2181120401	150±6	70	4 CIRCUIT PICOBLADE R:BLUNT CABLE 150MM
2181120402	225±6	105	4 CIRCUIT PICOBLADE R:BLUNT CABLE 225MM
2181120403	300±8	145	4 CIRCUIT PICOBLADE R:BLUNT CABLE 300MM
2181120404	425±8	205	4 CIRCUIT PICOBLADE R:BLUNT CABLE 425MM



DETAIL A

NOTES

1. Connector view shown is from mating side.
2. Free ends must be blunt cut.
3. Label text must be 2mm max. in height with Arial font.
4. Label must be wrapped in flag type on the cables.

REVISION			
DATE	REV	DESCRIPTION	CHANGER
04/03/2021	A	INITIAL RELEASE	ARAJU

DOCUMENT STATUS	P1	RELEASE DATE	2021/03/26	04:03:43
-----------------	----	--------------	------------	----------

FUNCTIONAL SYMBOLS $F_A = 0$ $F_E = 0$ $F_P = 0$ DIVISIONAL SYMBOLS	THIS DRAWING CONTAINS INFORMATION THAT IS PROPRIETARY TO MOLEX ELECTRONIC TECHNOLOGIES, LLC AND SHOULD NOT BE USED WITHOUT WRITTEN PERMISSION		<div style="text-align: center;"> </div>			
	DIMENSION UNITS	SCALE				CURRENT REV DESC:  EC NO: 659320 DRWN: ARAJU 2021/03/04 CHK'D: RDESAI01 2021/03/26 APPR: RDESAI01 2021/03/26  INITIAL REVISION: DRWN: ARAJU 2021/03/04 APPR: RDESAI01 2021/03/26
	GENERAL TOLERANCES (UNLESS SPECIFIED)					
	ANGULAR TOL	± °				
4 PLACES	±	PRODUCT CUSTOMER DRAWING  DOCUMENT NUMBER: 2181120400 DOC TYPE: PSD DOC PART: 000 REVISION: A				
3 PLACES	±					
2 PLACES	±					
1 PLACE	±					
0 PLACES	±	DRAFT WHERE APPLICABLE MUST REMAIN WITHIN DIMENSIONS				
THIRD ANGLE PROJECTION		DRAWING	SERIES	MATERIAL NUMBER	CUSTOMER	SHEET NUMBER
		A4-SIZE	218112	SEE TABLE	GENERAL MARKET	1 OF 1