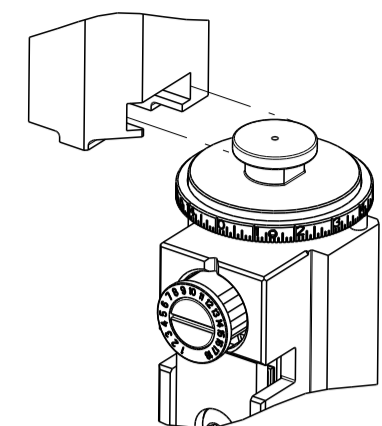


PART NUMBER	REVISION	DESCRIPTION	FEED TYPE
2150296-2	E	FINE CRIMP HEIGHT ADJUST	PNEUMATIC
7-2150296-2	E	PNEUMATIC AND CRIMP TOOLING KIT	PNEUMATIC
7-2150296-7	A	CRIMP TOOLING KIT	-

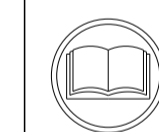
ATLANTIC VERSION TERMINATOR INTERFACE ADAPTER



APPLICATOR DATA		
CRIMP	SIZE	TYPE
WIRE	3.56 mm [.140]	F
INSUL	4.57 mm [.180]	F
APPLICATOR INSTRUCTIONS 408-35043		

TERMINAL DATA: TE TERMINAL		TE CRIMP SPECIFICATION	
TERMINAL NAME: RINGTONGUE WITH INS SUPPORT			
WIRE STRIP LENGTH		INSULATION DIAMETER RANGE	
4.80-5.60 mm [.189-.220 IN]		∅2.54-3.81 mm [.100-.150 IN]	
TERMINAL APPLICATION SPECIFICATION	114-3118		
TERMINALS APPLIED			
TE TERMINAL	TE TERMINAL	TE TERMINAL	TE TERMINAL
160789-2	160789-3	160789-5	

WIRE SIZE	CRIMP HEIGHT mm [INCH]	CRIMP HEIGHT REFERENCE SETTING
2.50mm2	2.29 +/- 0.05 [.090 +/- .002]	4.4
2.00mm2	2.18 +/- 0.05 [.086 +/- .002]	5.7
1.50mm2	2.06 +/- 0.05 [.081 +/- .002]	7.0
1.00mm2	1.96 +/- 0.05 [.077 +/- .002]	8.0



- RECOMMENDED SPARE PARTS
- REFER TO SUPPLIED INSTRUCTION SHEET FOR CLEANING, LUBRICATION AND STORAGE OF APPLICATOR.
- APPLY PART NUMBER 2-23419-6 LOCTITE TO THREADS OF ITEM 242.
- CRIMP HEIGHT REFERENCE SETTING WAS THE SETTING USED WHEN THE APPLICATOR WAS QUALIFIED AT THE FACTORY. ADJUSTMENT MAY BE NECESSARY WHEN RUNNING APPLICATOR IN THE FIELD.
- 5. UNLESS SPECIFIED OTHERWISE TORQUE VALUES SHALL BE USED PER DOCUMENT, 101-35000.
- TERMINAL PITCH NOT COMPATIBLE WITH MECHANICAL FEED.

***WARNING**
ON INSTALLATION, SET WIRE DISC TO CRIMP HEIGHT REFERENCE SETTING FOR LARGEST WIRE SIZE. CRIMP HEIGHT REFERENCE SETTINGS GREATER THAN THE VALUE SHOWN MAY CAUSE DAMAGE TO THE CRIMP TOOLING. REFER TO THE INSTRUCTION SHEET FOR PROPER SETUP AND ADJUSTMENTS.

LOC	DIST	REVISIONS					
A	66	P	LTN	DESCRIPTION	DATE	DWN	APVD
		B		ECR-13-000120	04JAN2012	L.Z	S.X
		C		ECR-14-002390	18FEB2014	X.Z	T.E
		D		ECR-19-003764	08MAR2019	TB	CT
		E		ECR-23-176485	01JUN2023	JWC	TE

-	1	1	2119641-1	FEED CAM, AIR FEED	248
-	1	1	2119082-9	CAM, SNAIL, INSULATION ADJUSTMENT	244
-	1	1	2079764-1	WASHER, WAVE SPRING, CREST-TO-CREST	243
-	1	1	2119083-1	RETAINER, INSULATION DIAL	242
-	1	1	2844940-4	AIR FEED MODULE	238
-	1	1	1-18028-0	WASHER, FLAT, REG M8	192
-	REF	REF	994970-2	COUNTER, MAGNETIC	164
-	1	1	455888-5	SPACER, CRIMPER	82
-	1	1	1803607-4	DOCUMENTATION PACKAGE	71
-	2	2	2-18032-2	SCR, SET, FLT PNT, M3 X 10.0	70
-	1	1	2119740-1	TAG, IDENTIFICATION	67
-	2	2	2168078-1	SCREW, DRIVE, RH, RoHS, 2 x .188	66
-	1	1	2168083-2	SCR, SKT HD CAP, RoHS, M4 X 8.0	60
-	1	1	5-18022-5	SCR, HEX HD CAP, M4 X 6.0	59
-	4	4	2168400-4	SHCS, LOW HEAD, RoHS, M4 X 8	57
-	2	2	2-2168083-6	SCR, SKT HD CAP, RoHS, M4 X 18	56
-	2	2	5018030-1	NUT, HEX, REG, RoHS, M3	54
-	2	2	986965-8	NUT, LOCK, HEX, TORQUE (M4)	53
-	1	1	2063961-9	FEED FINGER	51
-	1	1	18023-9	SCR, SKT HD CAP M4 X 6.0	49
-	1	1	2119655-5	APPLICATOR BASIC ASSEMBLY, EF	46
-	1	1	1803517-1	RAM ASSEMBLY, EF ATLANTIC	44
-	1	1	1803602-1	SCR, BHSC, RoHS (M8 X 25)	41
-	8	8	1-18028-2	WASHER, FLAT, REG M4	33
-	2	2	2168083-9	SCR, SKT HD CAP, RoHS, M4 X 20	31
-	2	2	2168083-2	SCR, SKT HD CAP, RoHS, M4 X 8.0	29
-	1	1	240639-1	STRIPPER (MACHINING)	27
-	2	2	1-2168083-5	SCR, SKT HD CAP, RoHS, M4 X 30	25
-	1	1	1752371-1	PLATE, STRIP GUIDE	24
-	2	2	3-22281-8	SPRING, COMPRESSION	22
-	2	2	18025-2	WASHER, SPRG LOCK, REG M4	21
-	1	1	1803292-1	DRAG	20
-	1	1	2-1901696-7	STRIP GUIDE, REAR	19
-	1	1	2-1901695-7	STRIP GUIDE, FRONT	18
-	4	4	1-2079383-1	SCR, BHSC, RoHS (M6 X 12)	17
-	1	1	7-240641-5	SPACER	16
-	1	1	240644-1	PLATE, REAR SHEAR	11
-	2	2	1-240645-2	SPACER, SHEAR PLATE	10
-	1	1	240642-1	PLATE, FRONT SHEAR	9
-	1	2	1333222-8	ANVIL, COMBINATION	8
-	1	1	2-240651-1	BLADE, SLUG	7
-	1	1	1-240641-0	SPACER	5
-	1	1	238011-2	BLOCK, CRIMPER SPACER	4
-	1	2	2119582-3	CRIMPER, INSULATION F PREMIUM	3
-	1	1	1-455888-0	SPACER, CRIMPER	2
-	1	2	456411-9	CRIMPER, WIRE PREMIUM	1
-	77	72	-2	PART NO	ITEM NO

ATLANTIC VERSION
Shown on sheets 1 of 4 & 2 of 4
(Pacific version shown on sheets 3 of 4 & 4 of 4)

DIMENSIONS:		TOLERANCES UNLESS OTHERWISE SPECIFIED:		DWN	
mm	0 PLC ±	1 PLC ±	2 PLC ±	L. ZHANG	10OCT2012
	3 PLC ±	4 PLC ±	ANGLES ±	L. ZHANG	10OCT2012
MATERIAL	FINISH	WEIGHT	SCALE	Customer Accessible Production Drawing	
			1:1	SHEET 1 OF 4	

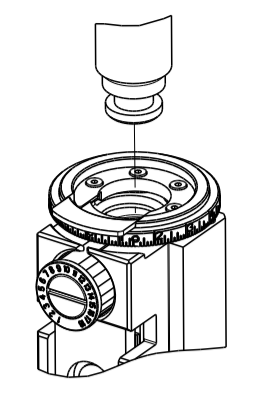


NAME: Ocean End Feed Applicator

SIZE: A1 CAGE CODE: 00779 DRAWING NO: 2150296

PART NUMBER	REVISION	DESCRIPTION	FEED TYPE
2-2150296-2	E	FINE CRIMP HEIGHT ADJUST	PNEUMATIC
7-2150296-7	A	CRIMP TOOLING KIT	-

PACIFIC VERSION TERMINATOR
 INTERFACE ADAPTER



APPLICATOR DATA		
CRIMP	SIZE	TYPE
WIRE	3.56 mm (.140)	F
INSUL	4.57 mm (.180)	F
APPLICATOR INSTRUCTIONS 408-35043		

TERMINAL DATA: TE TERMINAL		TE CRIMP SPECIFICATION	
TERMINAL NAME: RINGTONGUE WITH INS SUPPORT			
WIRE STRIP LENGTH 4.80-5.60 mm (.189-.220 IN)		INSULATION DIAMETER RANGE Ø2.54-3.81 mm (.100-.150 IN)	
TERMINAL APPLICATION SPECIFICATION	114-3118	-	-
TERMINALS APPLIED			
TE TERMINAL	TE TERMINAL	TE TERMINAL	TE TERMINAL
160789-2	160789-3	160789-5	

WIRE SIZE	CRIMP HEIGHT mm [INCH]	CRIMP HEIGHT REFERENCE SETTING
2.50mm2	2.29 +/- 0.05 [.090 +/- .002]	4.4
2.00mm2	2.18 +/- 0.05 [.086 +/- .002]	5.7
1.50mm2	2.06 +/- 0.05 [.081 +/- .002]	7.0
1.00mm2	1.96 +/- 0.05 [.077 +/- .002]	8.0

- RECOMMENDED SPARE PARTS
- REFER TO SUPPLIED INSTRUCTION SHEET FOR CLEANING, LUBRICATION AND STORAGE OF APPLICATOR.
- APPLY PART NUMBER 2-23419-6 LOCTITE TO THREADS OF ITEM 242.
- CRIMP HEIGHT REFERENCE SETTING WAS THE SETTING USED WHEN THE APPLICATOR WAS QUALIFIED AT THE FACTORY. ADJUSTMENT MAY BE NECESSARY WHEN RUNNING APPLICATOR IN THE FIELD.
- UNLESS SPECIFIED OTHERWISE TORQUE VALUES SHALL BE USED PER DOCUMENT, 101-35000.
- TERMINAL PITCH NOT COMPATIBLE WITH MECHANICAL FEED.

***WARNING**
 ON INSTALLATION, SET WIRE DISC TO CRIMP HEIGHT REFERENCE SETTING FOR LARGEST WIRE SIZE. CRIMP HEIGHT REFERENCE SETTINGS GREATER THAN THE VALUE SHOWN MAY CAUSE DAMAGE TO THE CRIMP TOOLING. REFER TO THE INSTRUCTION SHEET FOR PROPER SETUP AND ADJUSTMENTS.

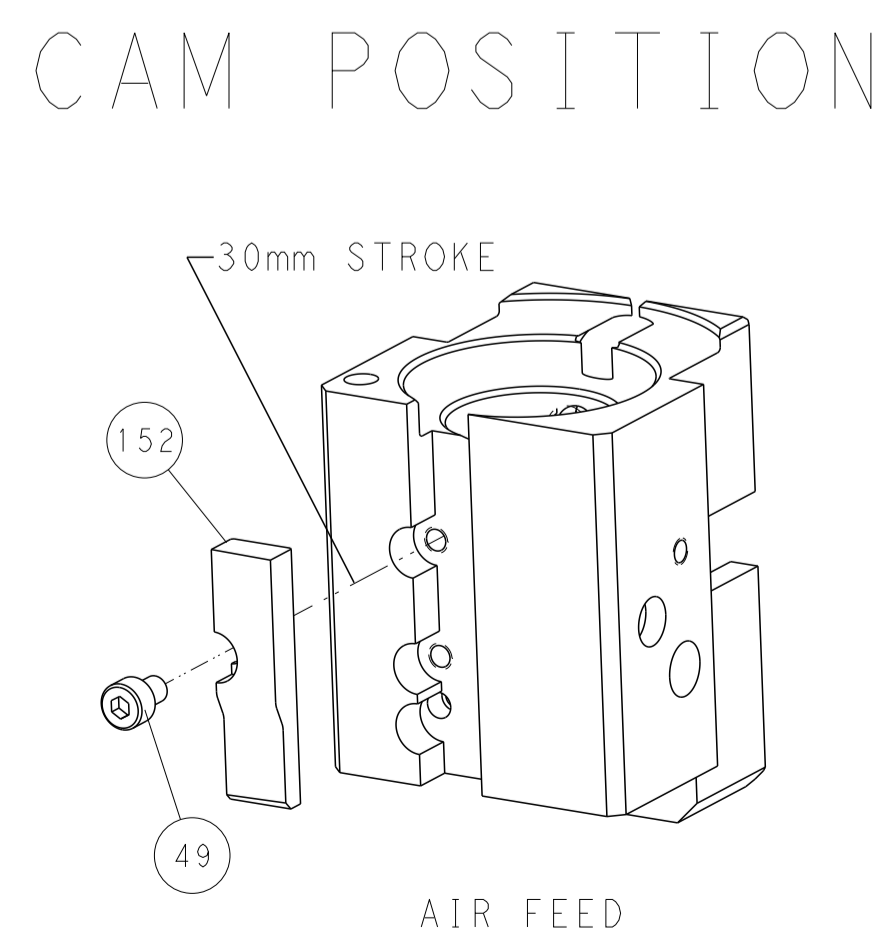
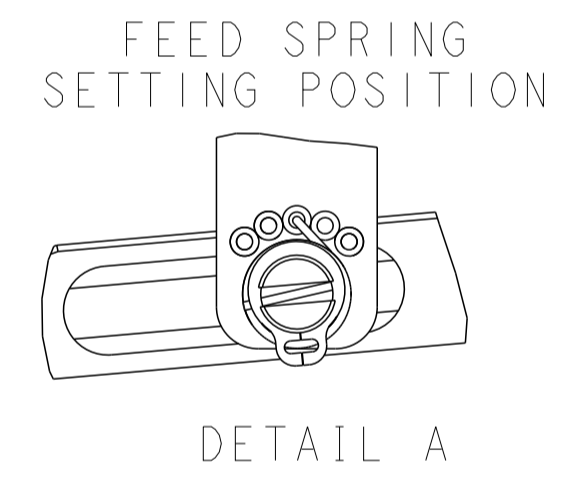
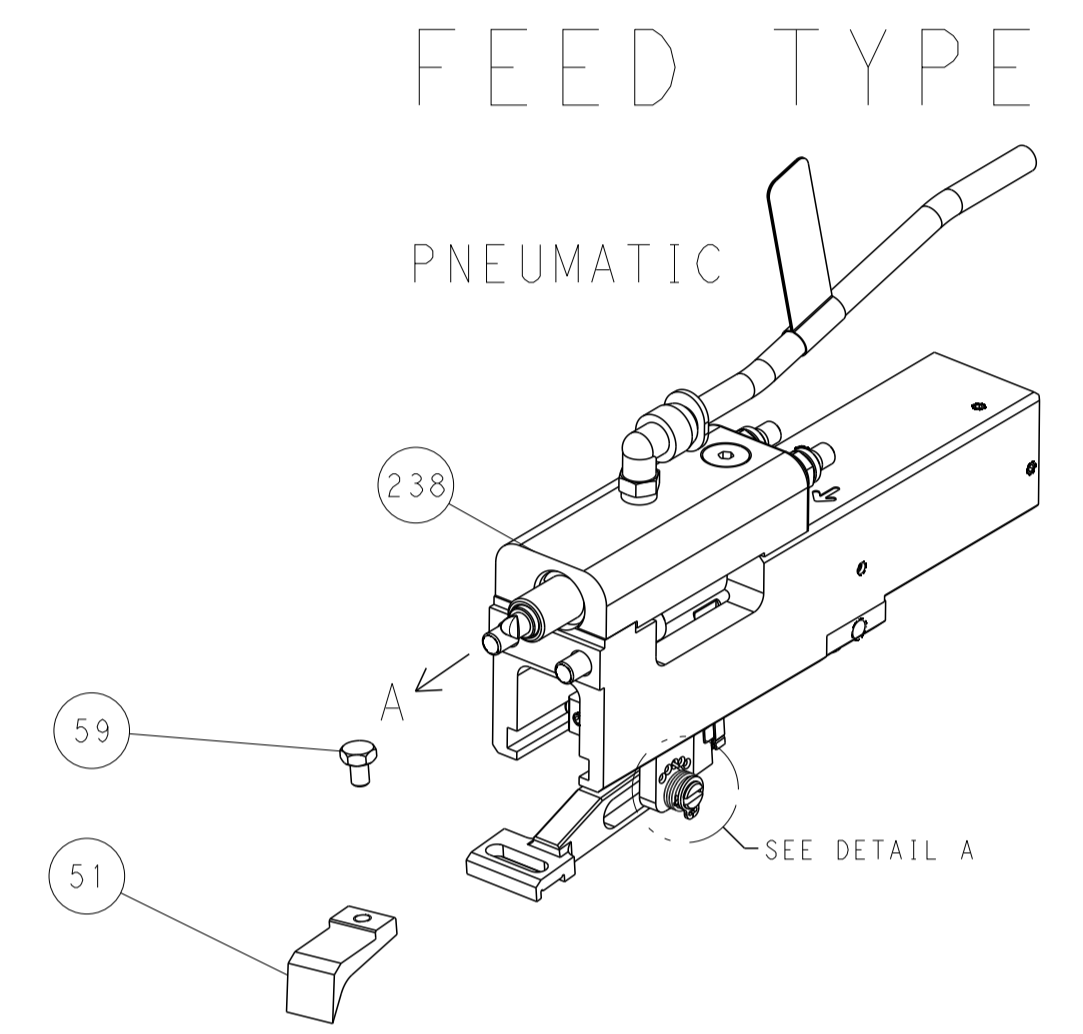
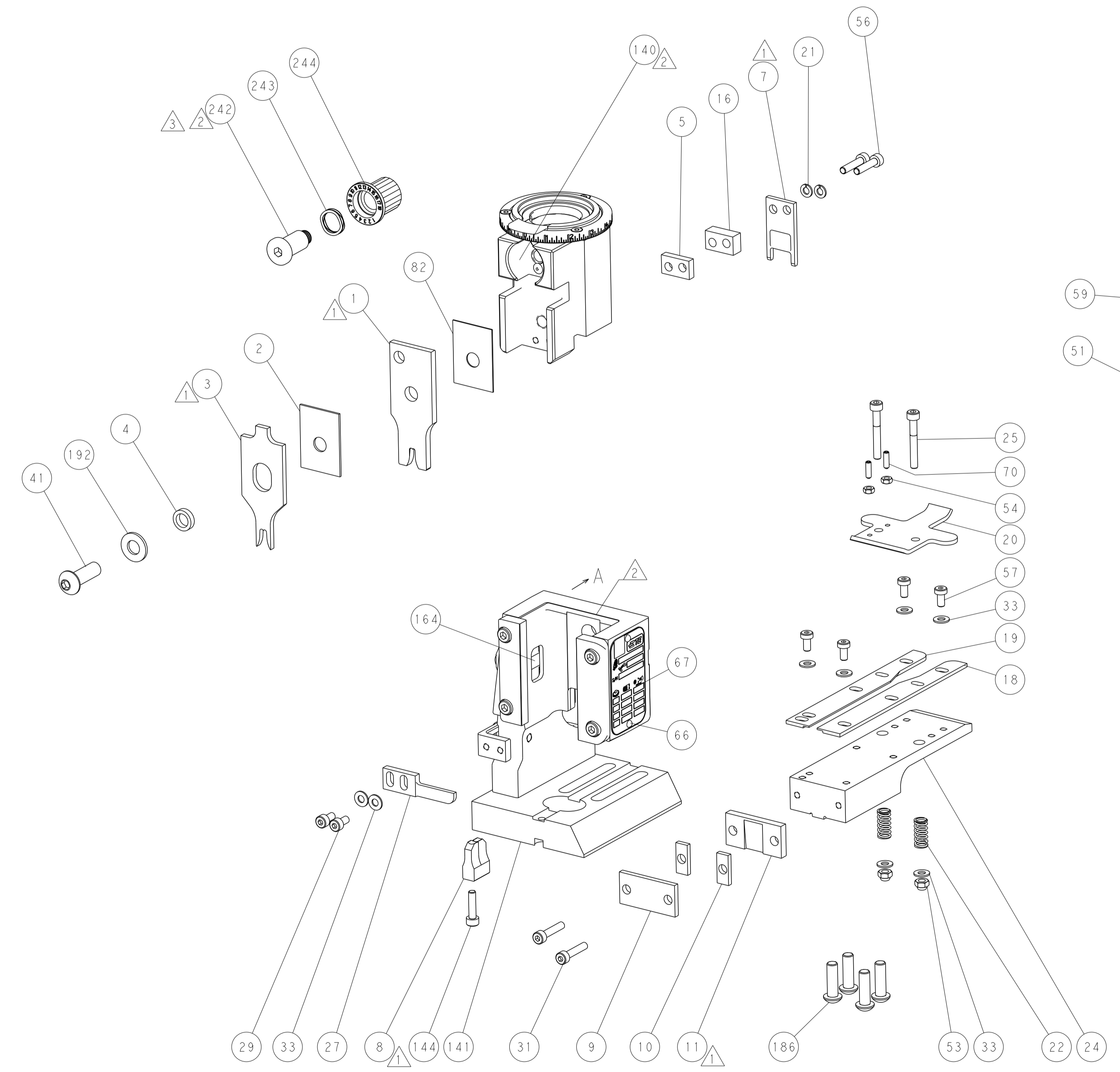
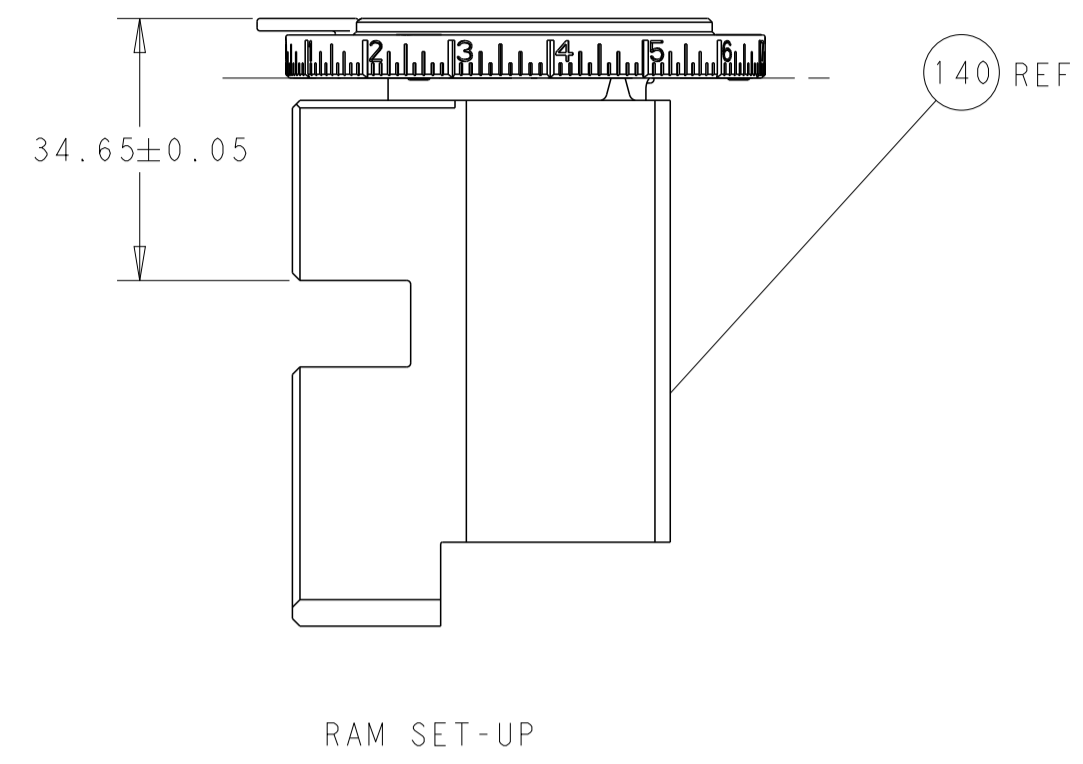
LOC	DIST	REV	DATE	BY	APPV
A	66	-	-	-	-

REV	DATE	DESCRIPTION	BY	APPV
- 1	2119082-9	CAM, SNAIL, INSULATION ADJUSTMENT		244
- 1	2079764-1	WASHER, WAVE SPRING, CREST-TO-CREST		243
- 1	2119083-1	RETAINER, INSULATION DIAL		242
- 1	2844940-4	AIR FEED MODULE		238
- 1	1-18028-0	WASHER, FLAT, REG M8		192
- 4	2079383-9	SCR, BHSC, RoHS (M6 X 20)		186
- REF	994970-2	COUNTER, MAGNETIC		164
- 1	2119641-2	FEED CAM, AIR FEED		152
- 1	2168083-8	SCR, SKT HD CAP, RoHS, M4 X 16		144
- 1	2119655-6	APPLICATOR BASIC ASSEMBLY, EF		141
- 1	1803518-1	RAM ASSEMBLY, EF PACIFIC		140
- 1	455888-5	SPACER, CRIMPER		82
- 1	1803607-4	DOCUMENTATION PACKAGE		71
- 2	2-18032-2	SCR, SET, FLT PNT, M3 X 10.0		70
- 1	2119740-1	TAG, IDENTIFICATION		67
- 2	2168078-1	SCREW, DRIVE, RH, RoHS, 2 x .188		66
- 1	5-18022-5	SCR, HEX HD CAP, M4 X 6.0		59
- 4	2168400-4	SHCS, LOW HEAD, RoHS, M4 X 8		57
- 2	2-2168083-6	SCR, SKT HD CAP, RoHS, M4 X 18		56
- 2	5018030-1	NUT, HEX, REG, RoHS, M3		54
- 2	986965-8	NUT, LOCK, HEX, TORQUE (M4)		53
- 1	2063961-9	FEED FINGER		51
- 1	18023-9	SCR, SKT HD CAP M4 X 6.0		49
- 1	1803602-1	SCR, BHSC, RoHS (M8 X 25)		41
- 8	1-18028-2	WASHER, FLAT, REG M4		33
- 2	2168083-9	SCR, SKT HD CAP, RoHS, M4 X 20		31
- 2	2168083-2	SCR, SKT HD CAP, RoHS, M4 X 8.0		29
- 1	240639-1	STRIPPER (MACHINING)		27
- 2	1-2168083-5	SCR, SKT HD CAP, RoHS, M4 X 30		25
- 1	1752371-1	PLATE, STRIP GUIDE		24
- 2	3-22281-8	SPRING, COMPRESSION		22
- 2	18025-2	WASHER, SPRG LOCK, REG M4		21
- 1	1803292-1	DRAG		20
- 1	2-1901696-7	STRIP GUIDE, REAR		19
- 1	2-1901695-7	STRIP GUIDE, FRONT		18
- 1	7-240641-5	SPACER		16
- 1	240644-1	PLATE, REAR SHEAR		11
- 2	1-240645-2	SPACER, SHEAR PLATE		10
- 1	240642-1	PLATE, FRONT SHEAR		9
1	1	1333222-8	ANVIL, COMBINATION	8
- 1	2-240651-1	BLADE, SLUG		7
- 1	1-240641-0	SPACER		5
- 1	238011-2	BLOCK, CRIMPER SPACER		4
1	1	2119582-3	CRIMPER, INSULATION F PREMIUM	3
- 1	1-455888-0	SPACER, CRIMPER		2
1	1	456411-9	CRIMPER, WIRE PREMIUM	1
- 77-22		PART NO	DESCRIPTION	ITEM NO

PACIFIC VERSION
 Shown on sheets 3 of 4 & 4 of 4
 (Atlantic version shown on sheets 1 of 4 & 2 of 4)

DIMENSIONS: mm 		TOLERANCES UNLESS OTHERWISE SPECIFIED: 0 PLC ± 1 PLC ± 2 PLC ± 3 PLC ± 4 PLC ± ANGLES ± FINISH		DWN L. ZHANG 10OCT2012 CHK L. ZHANG 10OCT2012 APVD S. XI 10OCT2012 PRODUCT SPEC APPLICATION SPEC WEIGHT SCALE 1:1 SHEET 3 OF 4 REV E	
MATERIAL:		FINISH:		NAME: Ocean End Feed Applicator SIZE: A1 CAGE CODE: 00779 DRAWING NO: 2150296 RESTRICTED TO:	

LOC		DIST		REVISIONS			
P	LTN	DESCRIPTION	DATE	OWN	APVD		
A	66	SEE SHEET 1					



PACIFIC VERSION
 Shown on sheets 3 of 4 & 4 of 4
 (Atlantic version shown on sheets 1 of 4 & 2 of 4)

<small>THIS DRAWING IS UNPUBLISHED. RELEASED FOR PUBLICATION. ALL RIGHTS RESERVED. © 2000 BY TYCO ELECTRONICS CORPORATION. THIS DRAWING IS CONTROLLED DOCUMENT. THE INFORMATION CONTAINED HEREIN IS UNCLASSIFIED EXCEPT WHERE SHOWN OTHERWISE. THIS INFORMATION IS CONTROLLED DOCUMENT. THE INFORMATION CONTAINED HEREIN IS UNCLASSIFIED EXCEPT WHERE SHOWN OTHERWISE.</small>		DWN L. ZHANG 10OCT2012 CHK L. ZHANG 10OCT2012 APVD S. XI 10OCT2012	TE Connectivity Harrisburg, PA 17105-3608
DIMENSIONS: mm TOLERANCES UNLESS OTHERWISE SPECIFIED: 0 PLC ± 1 PLC ± 2 PLC ± 3 PLC ± 4 PLC ± ANGLES ± FINISH ±		NAME PRODUCT SPEC APPLICATION SPEC WEIGHT SCALE 1:1	SIZE CAGE CODE DRAWING NO RESTRICTED TO A 00779 C=2150296 SHEET 4 OF 4 REV E
MATERIAL:		Customer Accessible Production Drawing	