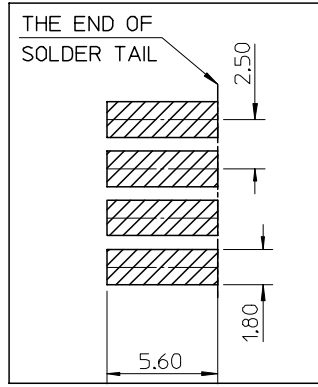
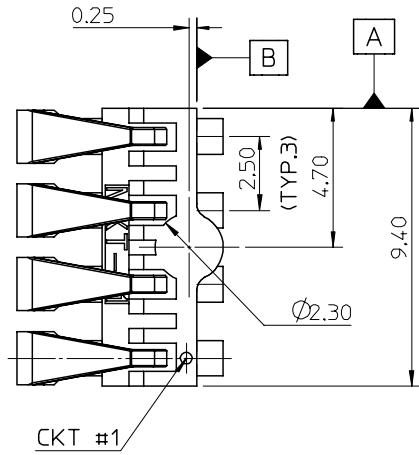
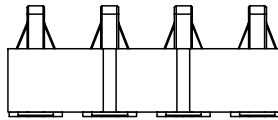
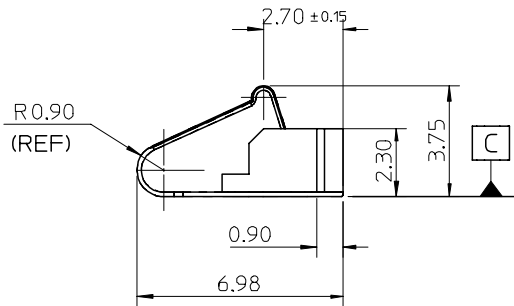
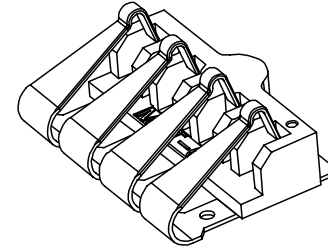


10 9 8 7 6 5 4 3 2 1

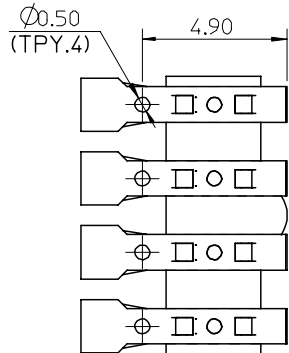


RECOMMEND PCB LAYOUT



NOTE:

- MATERIAL:
HOUSING: LCP, 30% GLASS-FILLED, UL 94V-0, COLOR IS BLOCK.
TERMINAL: 0.15MM PhBz CuSn8(C52100) OR CuSn5(C51000).
- FINISH:
CONTACT AREA: 30 micro inches Au MIN
over 100 micro inches Ni MIN.
SOLDER AREA: 150 micro inches PURE TIN MIN
over 100 micro inches Ni MIN.
REST AREA: 100 micro inches Ni MIN.
- COPLANARITY: 0.1 MAX AMONG THESE SOLDER TAILS.
- PRODUCT SPECIFICATION: PS 45257-001
- THE PART 45257-9003 COMPLIANT TO RoHS
DIRECTIVE 2002/95/EC AND ELV 2000/53/EC



DELETE NO RoHS P/N
EC NO: SH2007-0205
DRWN:HP/IAN 2006/10/12
CHKD:HARVEY 2006/09/17
APPR: JMCHEM 2006/09/28

QUALITY SYMBOLS
▽=0
▽C=0

GENERAL TOLERANCES (UNLESS SPECIFIED)		DIMENSION STYLE MM ONLY	
	mm	INCH	
4 PLACES	± ---	± ---	TOMLU 9/25/2001
3 PLACES	± ---	± ---	CHECKED BY DATE
2 PLACES	± 0.10	± ---	TOMLU 9/25/2001
1 PLACE	± 0.10	± ---	APPROVED BY DATE
ANGULAR ± 1 °			
DRAFT WHERE APPLICABLE MUST REMAIN WITHIN DIMENSIONS			

DRAWN BY	DATE	TITLE
TOMLU	9/25/2001	ASSEMBLY TPSW01 BATTERY CONNECTOR FOR MOTOROLA
CHECKED BY	DATE	
TOMLU	9/25/2001	
APPROVED BY	DATE	
MATERIAL NO. 452579003		DOCUMENT NO. SD-45257-004
SIZE A3	THIS DRAWING CONTAINS INFORMATION THAT IS PROPRIETARY TO MOLEX INCORPORATED AND SHOULD NOT BE USED WITHOUT WRITTEN PERMISSION	

SCALE 1:1	DESIGN UNITS METRIC	THIRD ANGLE PROJECTION
MOLEX INCORPORATED		
SHEET NO. 1 OF 1		

9 8 7 6 5 4 3 2 1