

**NOTES**

1. MATERIAL
 

HOUSING	LIQUID CRYSTAL POLYMER GLASS FILLED,UL94V-0(BEIGE)	4. FITTING NAIL FOR PREVENTION OF PEELING OF P.C.B. PATTERN.
ACTUATOR	PPS GLASS FILLED, UL94V-0(BLACK)	5. R0.3 MUST NOT BE OVERLAPPED TO PATTERN OF FPC/FFC.
TERMINAL	PHOSPHOR BRONZE	6. N: CIRCUIT.
FITTING NAIL	PHOSPHOR BRONZE	7. ELV AND RoHS COMPLIANT
2. PLATING
 

TERMINAL	CONTACT AREA : SEPARATED GOLD PLATING (0.05 MICROMETER MINIMUM) SOLDER TAIL AREA : SEPARATED GOLD PLATING UNDERPLATE : NICKEL OVERALL (1.0 MICROMETER MINIMUM)	8. TAILS AND NAILS COPLANALITY TO BE 0.1mm MAX.
FITTING NAIL	TIN PLATING (1.0 MICROMETER MIN.) UNDER PLATING : NICKEL PLATING (1.0 MICROMETER MIN.)	
3. IN THE PACKAGE, ACTUATOR OF PART 104060-\*\*10 SHOULD BE CLOSED.

40.55	43.1	39.5	44.7	104060-8010	104060-8017	80
30.55	33.1	29.5	34.7	104060-6010	104060-6017	60
D	C	B	A	MATERIAL NO.	EMBOSSED PACKAGE	CIRCUIT

CONNECTOR SERIES No. 104060-\*\*\*10

REVISED EC NO: KOR2016-0118 DRWN:YRK/IM 2016/05/27 CHKD:SK/IM 2016/05/30 APPR:YSK/IM02 2016/05/31	DESCRIPTION REV	QUALITY SYMBOLS	GENERAL TOLERANCES (UNLESS SPECIFIED)	DIMENSION STYLE	SCALE	DESIGN UNITS	THIRD ANGLE PROJECTION											
		$\nabla=0$ $\square=0$	<table border="0"> <tr> <th>mm</th> <th>INCH</th> </tr> <tr> <td>4 PLACES ± ---</td> <td>± ---</td> </tr> <tr> <td>3 PLACES ± ---</td> <td>± ---</td> </tr> <tr> <td>2 PLACES ± ---</td> <td>± ---</td> </tr> <tr> <td>1 PLACE ± 0.3</td> <td>± ---</td> </tr> </table>	mm	INCH	4 PLACES ± ---	± ---	3 PLACES ± ---	± ---	2 PLACES ± ---	± ---	1 PLACE ± 0.3	± ---	MM ONLY	1:1	METRIC		
		mm	INCH															
		4 PLACES ± ---	± ---															
3 PLACES ± ---	± ---																	
2 PLACES ± ---	± ---																	
1 PLACE ± 0.3	± ---																	
	<table border="0"> <tr> <td>DRAWN BY</td> <td>DATE</td> <td rowspan="3" style="text-align: center; vertical-align: middle;">           TITLE  <b>0.5 FFC E/O DUAL CONTACT HOUSING ASS'Y</b> </td> </tr> <tr> <td>YR.KIM</td> <td>2009/06/26</td> </tr> <tr> <td>CHECKED BY</td> <td>DATE</td> </tr> <tr> <td>YS00.KIM</td> <td>2009/06/26</td> <td></td> </tr> <tr> <td>APPROVED BY</td> <td>DATE</td> <td></td> </tr> <tr> <td>YS00.KIM</td> <td>2009/06/26</td> <td></td> </tr> </table>	DRAWN BY	DATE	TITLE <b>0.5 FFC E/O DUAL CONTACT HOUSING ASS'Y</b>	YR.KIM	2009/06/26	CHECKED BY	DATE	YS00.KIM	2009/06/26		APPROVED BY	DATE		YS00.KIM	2009/06/26		<b>MOLEX INCORPORATED</b>
DRAWN BY	DATE	TITLE <b>0.5 FFC E/O DUAL CONTACT HOUSING ASS'Y</b>																
YR.KIM	2009/06/26																	
CHECKED BY	DATE																	
YS00.KIM	2009/06/26																	
APPROVED BY	DATE																	
YS00.KIM	2009/06/26																	
		DRAFT WHERE APPLICABLE MUST REMAIN WITHIN DIMENSIONS	SEE TABLE	MATERIAL NO.	DOCUMENT NO.	SHEET NO.												

10 9 8 7 6 5 4 3 2 1

F

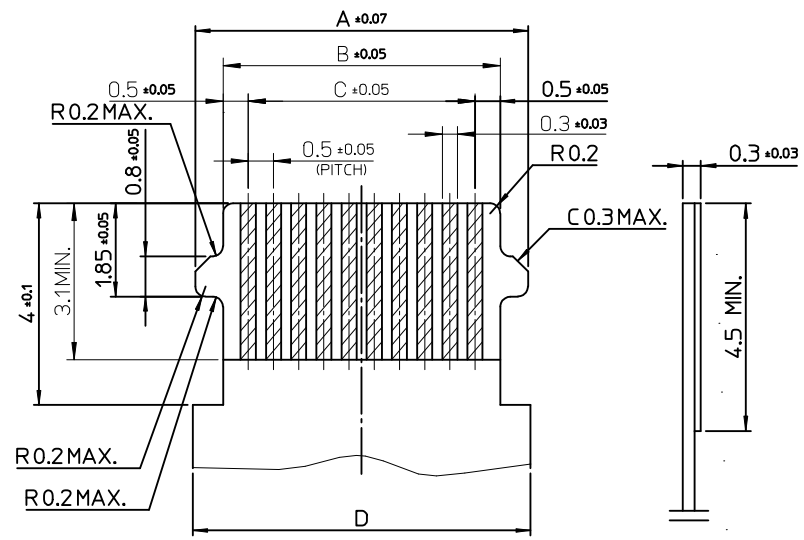
E

D

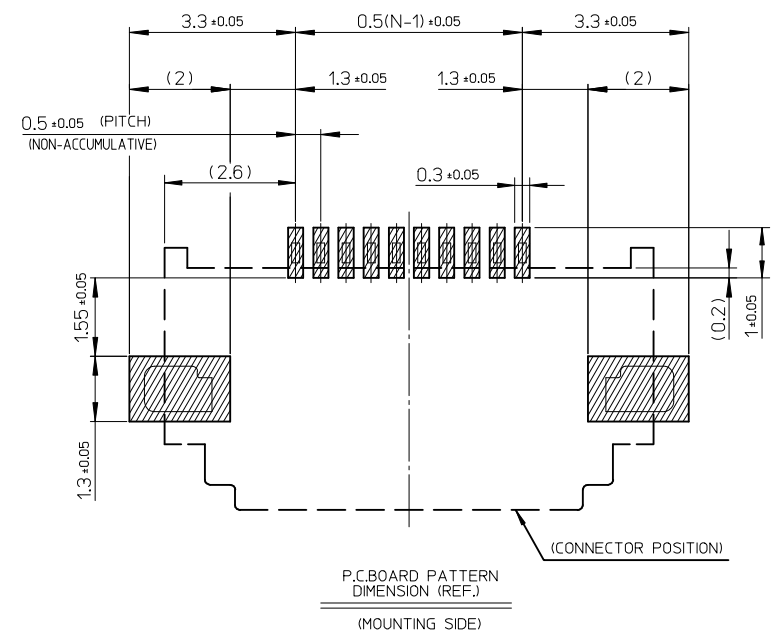
C

B

A



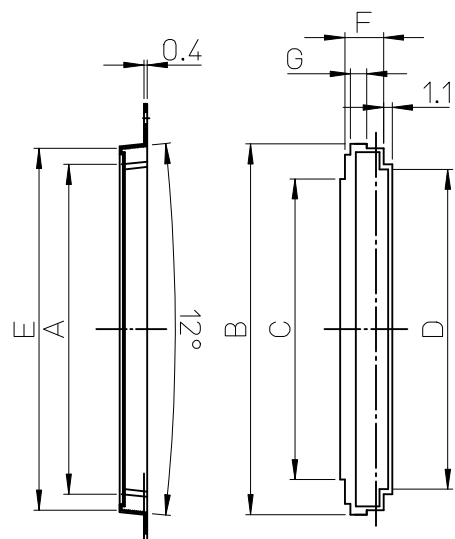
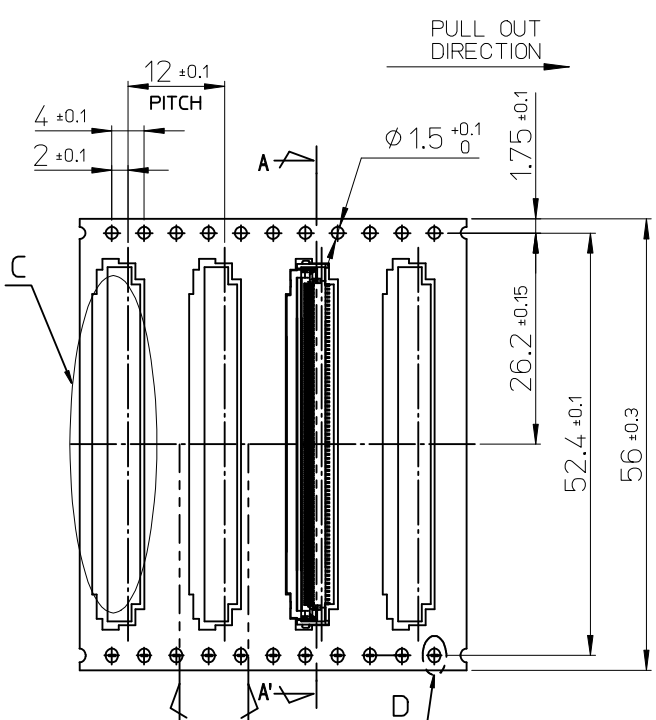
APPLICABLE FPC/FFC  
RECOMMENDED DIMENSION



42.3	39.5	40.5	42.2	80
32.3	29.5	30.5	32.2	60
D	C	B	A	CIRCUIT

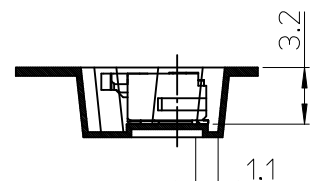
REVISED EC NO: KOR2016-0118 DRWN:YRKIM 2016/05/27 CHKD:KSKIM 2016/05/30 APPR:YSKIM02 2016/05/31	QUALITY SYMBOLS	GENERAL TOLERANCES (UNLESS SPECIFIED)	DIMENSION STYLE	SCALE	DESIGN UNITS	THIRD ANGLE PROJECTION															
	$\nabla = 0$ $\nabla \text{C} = 0$	<table border="1"> <tr> <td></td> <td>mm</td> <td>INCH</td> </tr> <tr> <td>4 PLACES</td> <td><math>\pm \text{---}</math></td> <td><math>\pm \text{---}</math></td> </tr> <tr> <td>3 PLACES</td> <td><math>\pm \text{---}</math></td> <td><math>\pm \text{---}</math></td> </tr> <tr> <td>2 PLACES</td> <td><math>\pm \text{---}</math></td> <td><math>\pm \text{---}</math></td> </tr> <tr> <td>1 PLACE</td> <td><math>\pm 0.3</math></td> <td><math>\pm \text{---}</math></td> </tr> </table>		mm	INCH	4 PLACES	$\pm \text{---}$	$\pm \text{---}$	3 PLACES	$\pm \text{---}$	$\pm \text{---}$	2 PLACES	$\pm \text{---}$	$\pm \text{---}$	1 PLACE	$\pm 0.3$	$\pm \text{---}$	MM ONLY	1:1	METRIC	
		mm	INCH																		
	4 PLACES	$\pm \text{---}$	$\pm \text{---}$																		
3 PLACES	$\pm \text{---}$	$\pm \text{---}$																			
2 PLACES	$\pm \text{---}$	$\pm \text{---}$																			
1 PLACE	$\pm 0.3$	$\pm \text{---}$																			
DESCRIPTION	DRAWN BY: YR.KIM CHECKED BY: YS00.KIM APPROVED BY: YS00.KIM DATE: 2009/06/26 DATE: 2009/06/26 DATE: 2009/06/26	TITLE: 0.5 FFC E/O DUAL CONTACT HOUSING ASS'Y MATERIAL NO.: SEE TABLE DOCUMENT NO.: SD-104060-001	SHEET NO.: 2 OF 3																		
REV	DRAFT WHERE APPLICABLE MUST REMAIN WITHIN DIMENSIONS	ANGULAR $\pm 1^\circ$	THIS DRAWING CONTAINS INFORMATION THAT IS PROPRIETARY TO MOLEX INCORPORATED AND SHOULD NOT BE USED WITHOUT WRITTEN PERMISSION																		

9 8 7 6 5 4 3 2 1

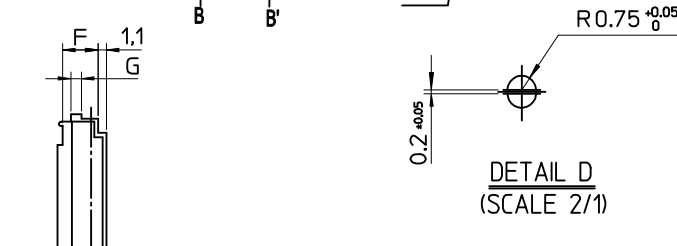


SECTION A-A'

DETAIL C



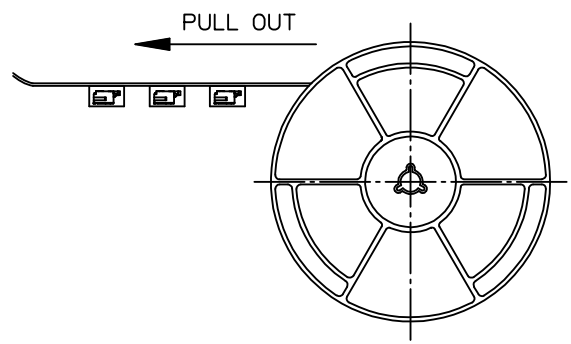
SECTION B-B'  
(SCALE 2/1)



DETAIL D  
(SCALE 2/1)

NOTES

1. NUMBER OF CONNECTORS : 2,400PCS/REEL
2. LEAD TAPE LENGTH
3. FOR DIMENSIONS OF PRODUCT, REFER TO SD-104060-001.
4. MATERIAL  
 CARRIER TAPE : POLYETHYLENE TEREPHTHALATE  
 TOP TAPE : POLYETHYLENE TEREPHTHALATE , POLYETHYLENE  
 REEL : POLYSTYRENE<RECYCLE MATERIAL CONTAINED>
5. ELV AND RoHS COMPLIANT
6. PEELING OFF FORCE OF COVER TAPE : 0.1N~0.59N(10.2GF~60GF)  
 (PEELING DIRECTION AS SHOW IN FOLLOW FIG.)  
 PEELING OFF SPEED : 300mm/Min.(Ref.)



35902-0021	104060-8099	2.0	4.8	44.9	39.7	37.3	46	44.9	104060-8017	80
35902-0021	104060-6099	1.4	4.7	34.65	29.7	27.7	35.8	30.9	104060-6017	60
COVER TAPE	EMBOSS TAPE	G	F	E	D	C	B	A	MATERIAL NO.	CIRCUIT

REVISED EC NO: KOR2016-0118 DRWN:YRKIM 2016/05/27 CHKD:KSKIM 2016/05/30 APPR:YSKIM02 2016/05/31	QUALITY SYMBOLS	GENERAL TOLERANCES (UNLESS SPECIFIED)	DIMENSION STYLE	SCALE	DESIGN UNITS	THIRD ANGLE PROJECTION	
	▽=0 ◻=0	mm INCH	MM ONLY	10:1	METRIC		
		4 PLACES ± --- ± --- 3 PLACES ± --- ± --- 2 PLACES ± --- ± --- 1 PLACE ± 0.3 ± ---	DRAWN BY DATE YR.KIM 2009/06/26	TITLE 0.5 FFC E/O DUAL CONTACT HOUSING ASS'Y			
		ANGULAR ± 1°	CHECKED BY DATE YS00.KIM 2009/06/26	MOLEX INCORPORATED			
	DRAFT WHERE APPLICABLE MUST REMAIN WITHIN DIMENSIONS		APPROVED BY DATE YS00.KIM 2009/06/26	DOCUMENT NO. SD-104060-001		SHEET NO. 3 OF 3	
			MATERIAL NO. SEE TABLE	THIS DRAWING CONTAINS INFORMATION THAT IS PROPRIETARY TO MOLEX INCORPORATED AND SHOULD NOT BE USED WITHOUT WRITTEN PERMISSION			