

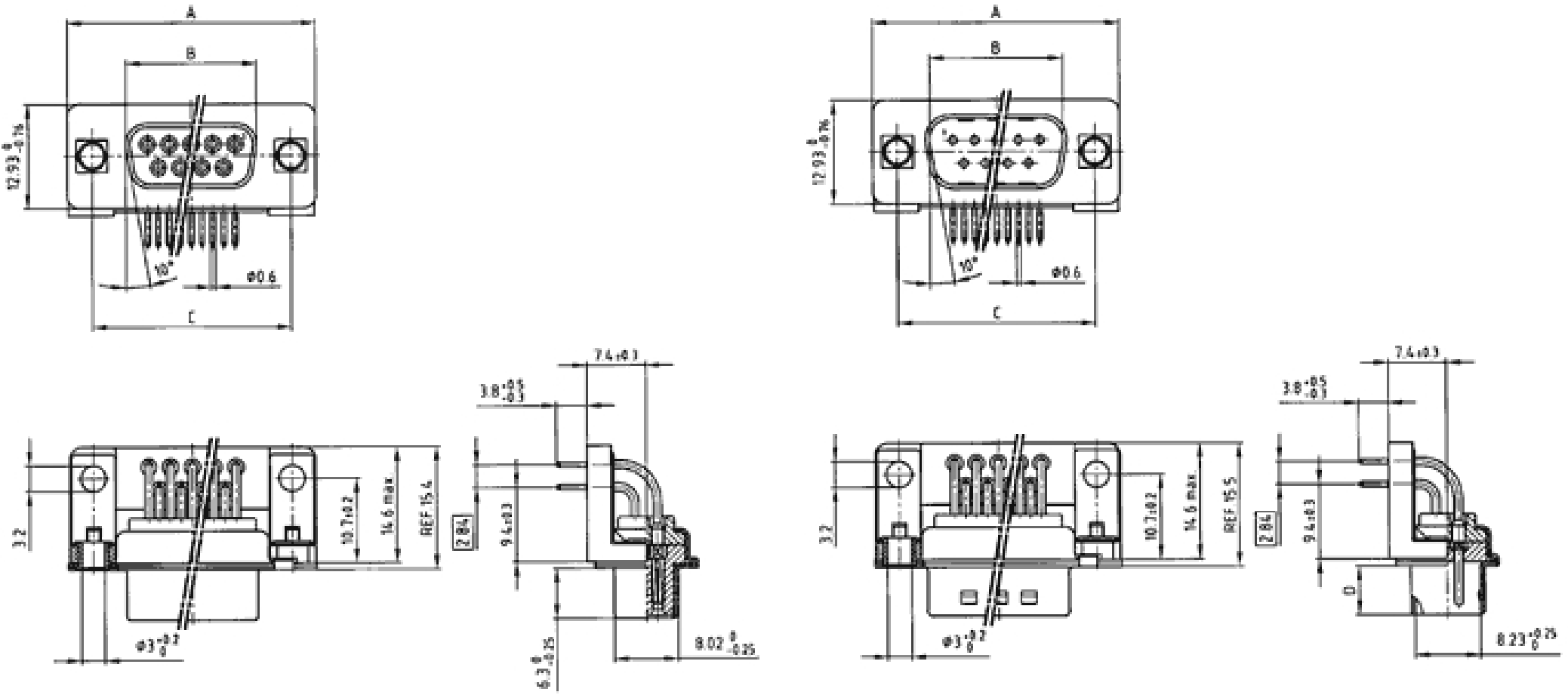
D-Sub Connector
Solder pin angled .370"
with mounting, grounding
bracket and through hole

Directive 2002/95/EC
"RoHS"
Compliant

(click on the schematic(s) for a more detailed view)

Socket connector

Plug connector



Socket connector:

No. of pos.	A -0,76	B-0,25	C
9	31,19	16,46	25,00 ^{+0,12} _{-0,13}
15	39,52	24,79	33,30 ^{+0,15} _{-0,10}
25	53,42	38,50	47,04 ^{±0,13}
37	69,70	54,96	63,50 ^{±0,13}
50	67,31	52,55	61,10 ^{+0,14} _{-0,11}

Plug connector:

No. of pos.	A -0,76	B+0,25	C	D -0,30
9	31,19	16,79	25,00 ^{+0,12} _{-0,13}	6,12
15	39,52	25,12	33,30 ^{+0,15} _{-0,10}	6,12
25	53,42	38,84	47,04 ^{±0,13}	5,99
37	69,70	55,30	63,50 ^{±0,13}	5,99
50	67,31	52,68	61,10 ^{+0,14} _{-0,11}	5,99

Part Numbers

No. of Pos.	Socket connector tin plated
9	164 A 12469 X
15	164 A 12479 X
25	164 A 12489 X
37	164 AA 12499 X

No. of Pos.	Plug connector tin -plated with ground indent
9	163 A 14069 X
15	163 A 14079 X
25	163 A 14089 X
37	163 A 14099 X

