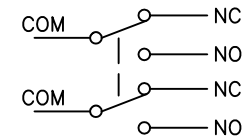
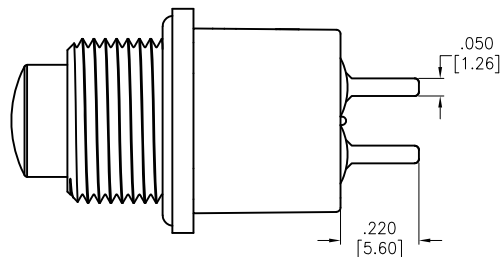
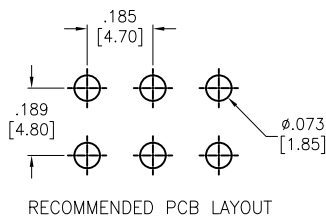
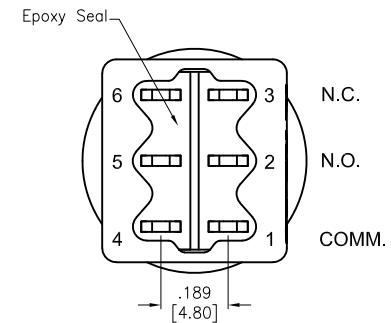
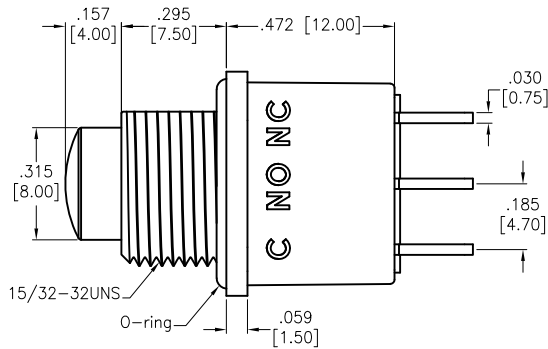
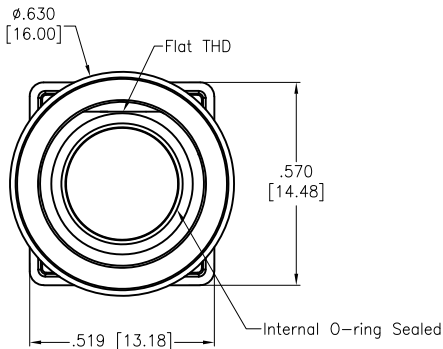
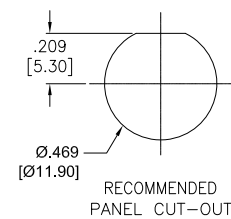
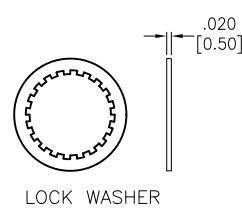
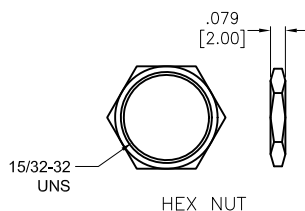


APPROVED: _____
 DATE: _____ TITLE: _____

| | | | | |
|-----|-------|-------------|---------|------|
| Rev | AWO # | Description | Date | Appr |
| - | | RELEASED | 2/20/21 | |



CIRCUIT DIAGRAM
 (DPDT) ON-MOMENTARY



SPECIFICATIONS:

Material:
 Movable Contact: Copper Alloy, Silver Plated
 Terminal: Copper Alloy, Silver Plated
 Bushing&Plunger: Brass, Nickel Plated, Color: Black
 Electrical:
 Voltage rating: 120VAC or 38VDC
 Current rating: 1 Amps
 Contact resistance: 10 mΩ max
 Insulation resistance: 1,000 Mohms min
 Dielectric withstanding voltage: 1,500V RMS @Sea level
 Mechanical:
 Waterproof: IP68
 Temperature Rating:
 Operating temperature: -30°C to +85°C
 Environmental:
 Lead free, RoHS compliant



| | | | |
|---|--------|---------|--------|
| UNLESS OTHERWISE SPECIFIED ALL DIMENSIONS ARE INCHES [MM] TOLERANCES: EXCEPT AS NOTED | | | |
| INCHES | | HOLES | |
| .X | ± .10 | Ø.X | ± .10 |
| .XX | ± .020 | Ø.XX | ± .015 |
| .XXX | ± .015 | Ø.XXX | ± .010 |
| APPROVALS | | DATE | |
| DRAWN | LH | 2/20/21 | |
| CHECKED | AC | 2/20/21 | |
| APPROVED | | | |

ADAM TECH 909 Rahway Avenue,
 Union, NJ 07083
 Phone: 908-687-5000
 Fax: 908-687-5710

TITLE
**SEALED PUSHBUTTON SWITCH, WATERPROOF-IP68
 DPDT, ON-MOMENTARY, SILVER PLATED, PCB TYPE**

| | | |
|------------------|-------------------------------------|--------------|
| SIZE X | PART NO. SW-PB10-DBB2QE-4 | REV. - |
| REF: S00198T | SCALE: NTS | SHEET 1 OF 1 |

6 5 4 3 2 1

D

D

C

C

B

B

A

A

6 5 4 3 2 1