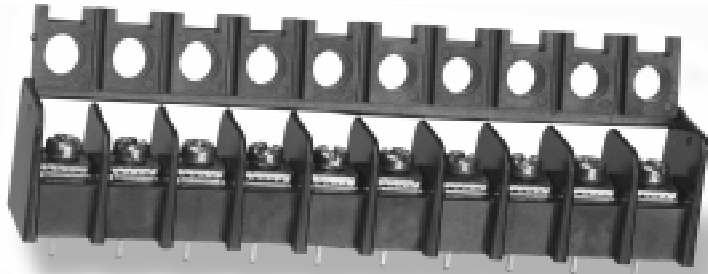


Integral cover eliminates assembly costs, helps prevent shock

Description

Made in the USA, all Beau terminal blocks embody the highest quality standards in the industry—using the finest materials and world class manufacturing processes. They meet or exceed all applicable industry standards.

- **Delivered as a one-piece unit**, it eliminates assembly costs.
- **"Touch Safe"** for extra protection in the field, as defined by Section 23 of UL 1863.
- **Wide range of uses** including security systems, power supplies, telecommunications and wherever end-user shock protection is a concern.
- **Four popular spacings.** Available with closed side barrier terminal strips in the two most popular terminal spacings: 0.325" (Series 69, Series 70, Series 70R), 0.375" (Series 72, Series 72R, Series 75), 0.438" (Series 73, Series 73R) and 0.500" (Series 66).
- **Easy-to use locking cover.** The unique cover snaps shut with a positive latching action. It requires a deliberate motion to reopen, thus preventing accidental exposure to live circuits. For easy wiring, the cover seats securely in place when fully opened.
- **Probe holes** in cover make circuit testing easy.
- **Optional imprint for easy circuit identification**--either on the inside of the cover (consealed and tamper resistant), on the outside of the cover, or on the terminal strip (option -10A).



SPECIFICATIONS

Terminal centers

Series 69 strips:	.325"
Series 70 strips:	.325"
Series 70R strips:	.325"
Series 72 strips:	.375"
Series 72R strips:	.375"
Series 75 strips:	.375"
Series 73 strips:	.438"
Series 73R strips:	.438"
Series 66 strips:	.500"

Terminals: Feed-thru PC

UL current rating: 20 amps

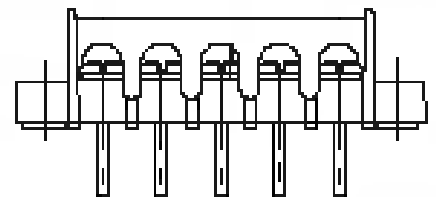
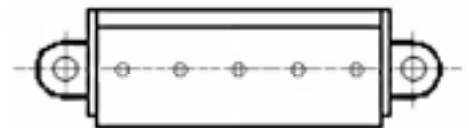
UL voltage ratings:

Class B, comml equip.	250 Vrms
Class C, genl indl:	150 Vrms

Insulator and cover materials:

Thermoplastic. UL flame retardant rating 94V-0

UL recognized and CSA certified.

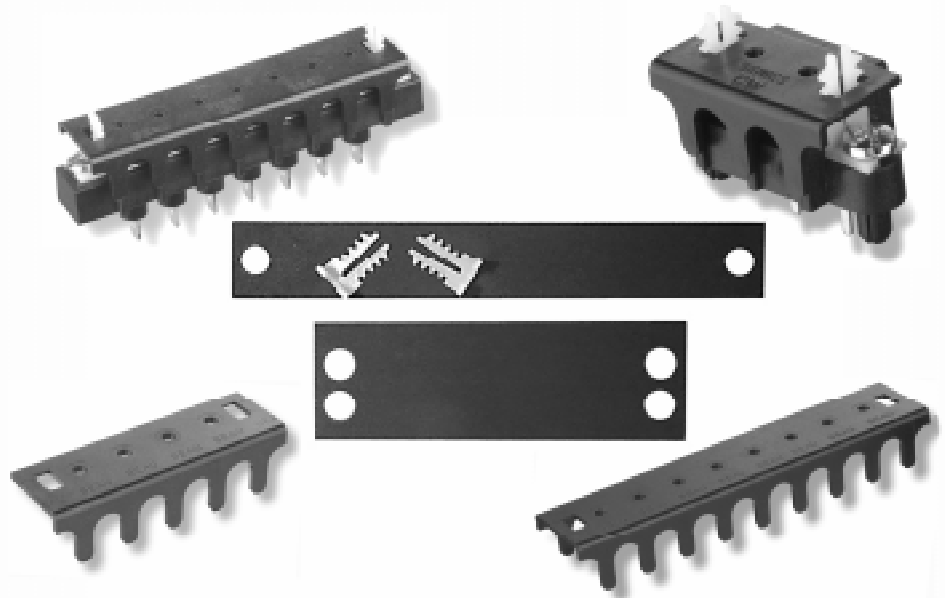


Simple installation on two styles: flat and wrap-around

Description

Made in the USA, all Beau terminal blocks embody the highest quality standards in the industry—using the finest materials and world class manufacturing processes. They meet or exceed all applicable industry standards.

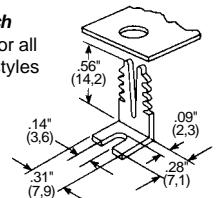
- **Snap-on covers add extra protection to barrier terminal strips.** Beau offers wrap-around covers for barrier terminal strips in addition to flat covers.
- **Both covers snap-on easily** and provide the required protection at low cost.
- **Imprinting is available,** on special order.
- **Fit most makes, sizes and lengths** of barrier terminal strips. The chart to the right indicates which cover to use with each Beau strip. For help in determining what other brands they fit, contact the factory.
- **Beau flat covers** protect the top of the strip and are the most economical type available.
- **Beau wrap-around covers** protect the top and front, and both sides of the terminal strip. Side guards prevent contact with live circuits, and the access holes in the top simplify circuit checking with test probes.
- **Covers are easily removed,** for quick access, yet cannot be accidentally dislodged.
- **Simple installation.** To install, fasten the slotted foot of the L-shaped latch to the mounting hole at the end of the barrier terminal strip. Secure one latch at each end. For double-row styles, only one latch is needed at each end. Squeeze the two serrated legs together and insert them in the hole at one end of the cover, pushing the cover down until it butts against the top of the barriers. Repeat at other end.



SPECIFICATIONS

Flat cover material: Vulcanized fiber .032" (0,8) thick. Color black.
Wrap-around cover material: Thermoplastic, .050" (1,3) thick. Color black.
Latch material: Acetal, .040" (1,0) thick. Color natural.

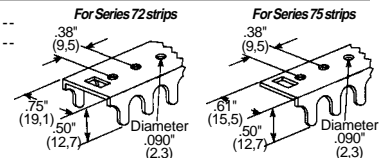
Latch
Same for all cover styles



Beau barrier terminal strip Series No.	Snap-on cover kit † Part No.	No. of circuits	Cover width in	mm	A in	mm
--	------------------------------	-----------------	----------------	----	------	----

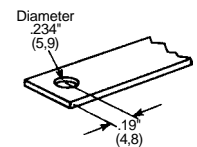
SINGLE ROW STYLE, WITH WRAP-AROUND COVER

72	CW01-___*	2 to 26	.75	19,1	--	--
75	CW05-___*	2 to 26	.61	15,5	--	--



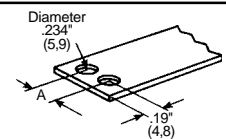
SINGLE ROW STYLE, WITH FLAT COVER

12	CA01-___*	2 to 31	.63	15,9	--	--
13	CA02-___*	2 to 26	.69	17,5	--	--
24	CA01-___*	2 to 30	.63	15,9	--	--
25	CA02-___*	2 to 30	.69	17,5	--	--
71	CA01-___*	2 to 26	.63	15,9	--	--
72	CA01-___*	2 to 26	.63	15,9	--	--
74	CA02-___*	2 to 30	.69	17,5	--	--



DOUBLE ROW STYLE, WITH FLAT COVER

14	CA03-___*	2 to 30	.88	22,2	.31	7,9
18	CA04-___*	2 to 30	1.13	28,6	.42	10,7
76	CA03-___*	2 to 30	.88	22,2	.31	7,9
77	CA03-___*	2 to 30	.88	22,2	.31	7,9
78	CA04-___*	2 to 30	1.13	28,6	.42	10,7



† Each kit consists of two latches and a cover.

* To complete part no., add number of circuits in strip.

Dimensions in parentheses are millimeters.