



Copyright FD



FCI

FCIconnect.com

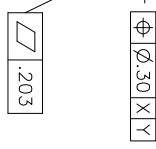
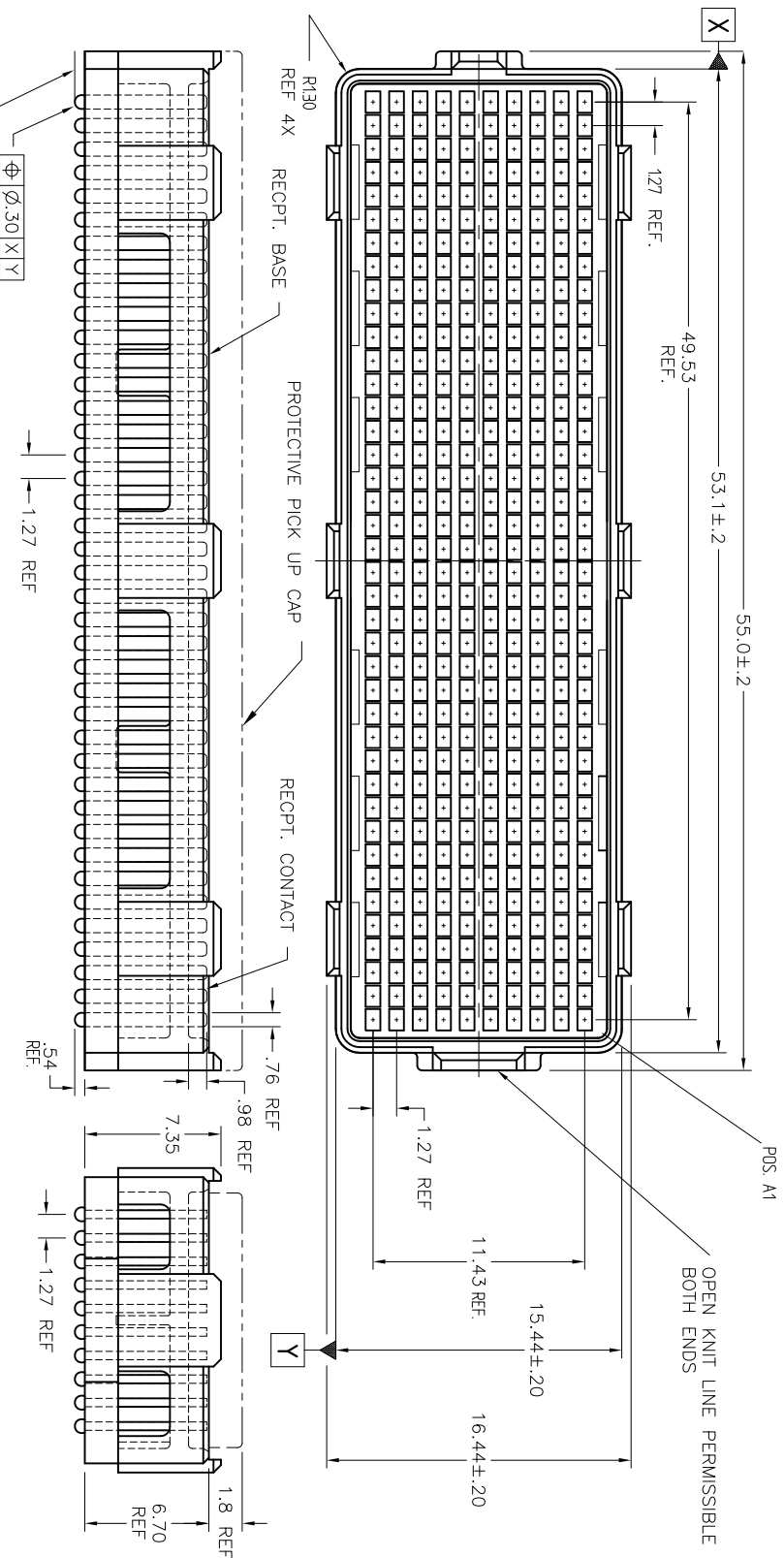


PRODUCT NUMBER
SEE SHEET 3

1 | 2

3 |

4



Mat'l. code	SEE NOTE 1	date	surface	tolerance	projection	product family	title
lfr	ecm no.	dfr	ASME Y14.5	ASME Y14.5		MEG-ARRAY	
L	V06-0560	LP	2006-06-29	angles	MM		8mm RECPT. ASSY
M	V06-0499	RE	2009-10-21	XXX.13			10 X 40 = 400 POS.
N	V-012332	RE	2002-08-08	XXX.051	Scale: 3:1		
P	V-B977-1	DCH	2002-11-06	D			
R	V-B9499	DCH	2005-11-20	PLQJ			
K	V06-0940	VS	2006-10-18	DDJ			
Sheet	revision	R	R	R			
Index	Sheet	1	2	3			



74390

A4

Form: AdminLIC

1

2

3

4



Copyright FCJ

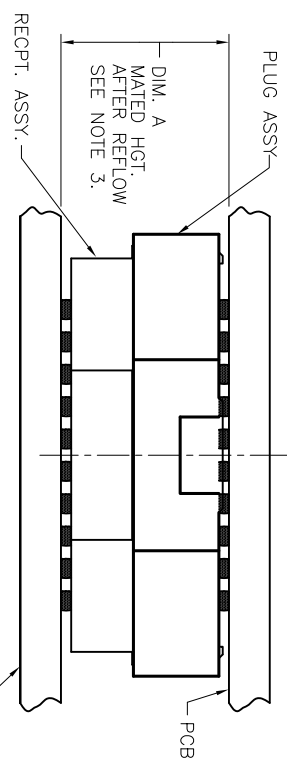


FCJconnect.com

3 |

4

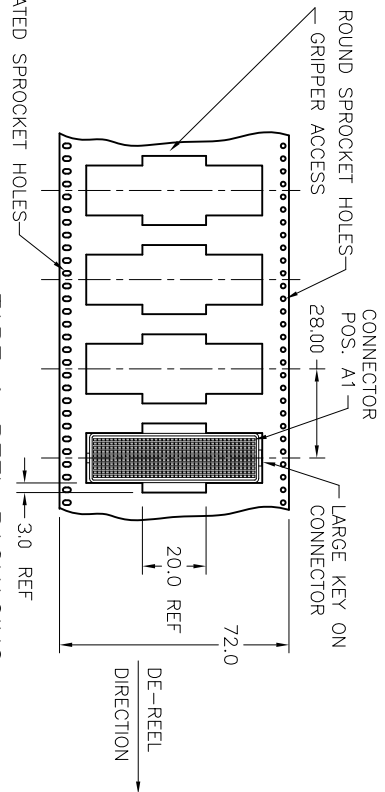
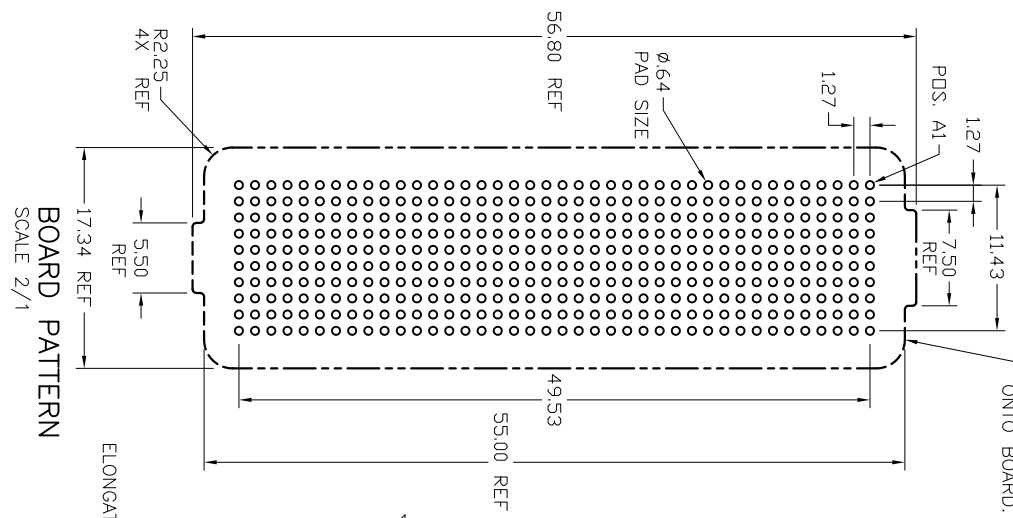
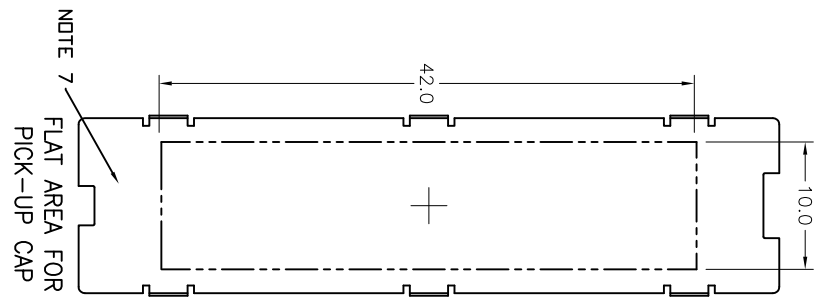
STENCIL MATED CONNECTOR OUTLINE ONTO BOARD.



DIM. A	PLUG ASSY P/N	REPT. ASSY P/N
8.0	84740	74390
14.0	84520	74390

MATED HEIGHT AFTER REFLOW IS BASED ON ϕ .64mm PAD (METAL-DEFINED) AND .13mm SOLDER PASTE STENCIL THICKNESS. SEE NOTE 3.

END VIEW - MATED CONNECTORS SCALE NONE



mat'l. code	SEE NOTE 1	surface	tolerance	projection	product family
lfr	ecm no.	dr	date	ASME Y14.5	MEG-ARRAY
R	angles	dr	ASME Y14.5	ASME Y14.5	8mm REPT. ASSY.
	dr	dr	XXX.X	XXX.X	10x40 = 400 POS.
	dr	D WAUGHEN	999-01-05	XXX.X051	Scale: 2:1
	dr	PLIQU	999-01-05		
	dr	T LEMKE	999-01-05		
	dr	T LEMKE	999-01-05		
	dr	T LEMKE	999-01-05		
sheet	revision				
index	sheet				



dwg no
74390

sheet 2 of 3
size
A4

CUSTOMER Drawing

form: ADMX11C

1 |

2 |

3 |

4



Copyright RL



FCIconnect.com

1 | 2

3 |

4

NOTES:

- 1. MAT'L:

HOUSING: LCP
CONTACT: COPPER ALLOY

PLATING

CONTACT: (SEE TABLE ON SHEET 3)
SOLDER BALL: (SEE TABLE ON SHEET 3)
EUTECTIC SnPb OR LEAD FREE
95.5Sn/44g/0.5Cu

- 2. SOLDER BALLS WILL NOT BE PERFECT SPHERICAL SHAPE DUE TO REFLOW ATTACHMENT.
- 3. MATED HEIGHT EFFECTED BY CUSTOMER'S PCB PAD SIZE, PLATING, SOLDER REFLOW PROFILE, & SOLDER PASTE.
- 4. PLATING FOR INDICATED -2XX SERIES PRODUCT NUMBERS MEET THE REQUIREMENTS OF GR-1217-CORE, CENTRAL OFFICE ENVIRONMENT, (25 YEAR LIFE EXPECTANCY). THE CONTACT GEOMETRY IN THESE PRODUCT NUMBERS IS SPECIAL ALSO.
- 5. FOR PROPER APPLICATION FOLLOW FCI APPLICATION SPECIFICATION GS-20-033 LEAD FREE SOLDER BALLS WILL NOT SOLDER PROPERLY IN A LEADED SOLDER PROCESS DUE TO A HIGHER REFLOW TEMPERATURE. LEAD FREE PRODUCT IS THEREFORE NOT BACKWARDS COMPATIBLE WITH LEADED OR SOME SOLDERING APPLICATIONS. REFERENCE FCI APPLICATION SPECIFICATION
- 6. THIS PRODUCT MEETS EUROPEAN UNION DIRECTIVES AND OTHER COUNTRY REGULATIONS AS DESCRIBED IN GS-47-0004 PRODUCT MEETING THIS DIRECTIVE IS IDENTIFIED IN THE LOT CODE NUMBER MARKED ON EACH PART BY HAVING AN "X" IN THE SEVENTH CHARACTER POSITION
- 7. COMPANY LOGO TO APPEAR IN THIS AREA.
- 8. 74390-302, -302LF, -402, -402LF, -502 AND -502LF ARE OBSOLETE

PRODUCT NUMBER	PICK-UP CAP (NATURAL OR BLACK COLOR)	CONTACT PLATING AND THICKNESS	SOLDER BALL	NOTES
74390-001	YES	15u" (.38um) Au	SnPb	6
74390-001LF	YES	15u" (.38um) Au	LEAD FREE	6
74390-091	YES	15u" (.38um) EXT	SnPb	6
74390-091LF	YES	15u" (.38um) EXT	LEAD FREE	6
74390-101	YES	30u" (.76um) Au	SnPb	6
74390-101LF	YES	30u" (.76um) Au	LEAD FREE	6
74390-191	YES	30u" (.76um) EXT	SnPb	6
74390-191LF	YES	30u" (.76um) EXT	LEAD FREE	6
74390-201	YES	50u" (1.27um) Au SPECIAL	SnPb	4
74390-201LF	YES	50u" (1.27um) Au SPECIAL	LEAD FREE	4 AND 6
74390-291	YES	50u" (1.27um) EXT SPECIAL	SnPb	4
74390-291LF	YES	50u" (1.27um) EXT SPECIAL	LEAD FREE	4 AND 6
74390-301	YES	15u" (.38um) Au SPECIAL	SnPb	6
74390-301LF	YES	15u" (.38um) Au SPECIAL	LEAD FREE	6 AND 8
74390-401	YES	30u" (.76um) Au SPECIAL	SnPb	6
74390-401LF	YES	30u" (.76um) Au SPECIAL	LEAD FREE	6 AND 8
74390-501	YES	Au SPECIAL	SnPb	4 AND 8
74390-501LF	YES	Au SPECIAL	LEAD FREE	4, 6 AND 8

10. A SYMBOL WILL BE NEXT TO ANY DIMENSION, NEW VIEW OR NOTE WHICH HAS BEEN MODIFIED WITH THE CURRENT DRAWING REVISION

mat'l code	SEE NOTE 1	surface ASME Y14.5	tolerance ASME Y14.5	projection	product family
lfr	ecm no	dr	date	intolerances unless otherwise specified	MEG-ARRAY
R		angles	XXX.X	MM	8mm REOPT. ASSY.
		0° ±2°	XXX.X	Scale: 2:1	10x40 = 400 POS.
		dr	D WAUGHEN 999-01-05		Sheet 3 of 3
		plqj	T LEMKE 999-01-05		size
		clp	T LEMKE 999-01-05		A4
		qdd	T LEMKE 999-01-05		CUSTOMER Drawing
sheet	revision				
index	sheet				

form: AdminXic

1

2

3

4

B

A

A

B