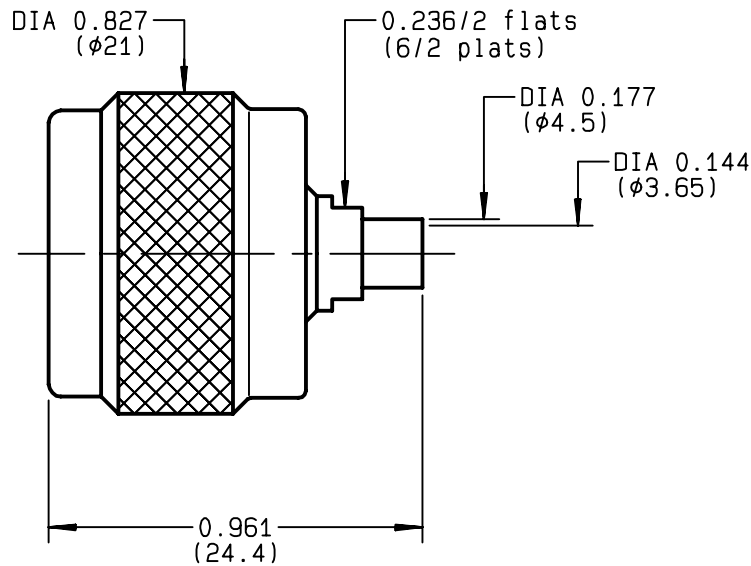


**STRAIGHT PLUG SOLDER TYPE
CABLE .141**

R161.051.000
SERIES N



| | | |
|---------------------------------|----------------------------------|---|
| NOMINAL IMPEDANCE | 50 Ω | CABLES : KS 2 |
| FREQUENCY RANGE | 0-11 GHz | RG 402 |
| TEMPERATURE RATING | -55/+105 °C | |
| V.S.W.R | 1.15 + x F(GHz)Maxi | |
| RF INSERTION LOSS | 0.048 √F(GHz) dB Maxi | |
| VOLTAGE RATING | 335 Veff Maxi | |
| DIELECTRIC WITHSTANDING VOLTAGE | 1000 Veff Mini | |
| INSULATION RESISTANCE | 5000 MΩMini | OTHERS CHARACTERISTICS |
| HERMETIC SEAL | NA Atm.cm ³ /s | CABLE RETENTION 500 N Mini |
| LEAKAGE (pressurized only) | NA | CENTER CONTACT RETENTION |
| MECHANICAL DURABILITY | 500 Cycles | Axial force - mating end NA N Mini |
| WEIGHT | 24.86 gr | Axial force - opposite end NA N Mini |
| SPECIFICATION | | Torque NA cm.N Mini |
| | | RECOMMENDED TORQUES |
| | | Mating 130 cm.N |
| | | Panel nut NA cm.N |
| | | Clamp nut NA cm.N |

| CONNECTOR PARTS | MATERIALS | FINISH (all values are given in micrometers) |
|-----------------|-----------------|--|
| BODY | BRASS | GOLD 0.2 OVER NICKEL 2 |
| OUTER CONTACT | | |
| CENTER CONTACT | BRASS | GOLD 0.5 OVER NICKEL 2 |
| INSULATOR | PTFE | - |
| GASKET | SILICONE RUBBER | - |
| OTHERS PIECES | BRASS | BBR 2 |

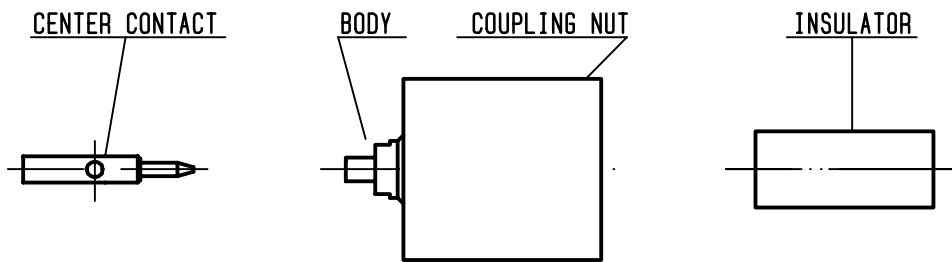
| | | | | |
|----------|----------------|-------------------|------------------|--|
| BONOMINI | ISSUE | CREATION DATE | FILE PART-NUMBER | |
| | 0248K01 | 08/02/1993 | EPC 96-07 | |

The information given here is subject to change without notice. Design changes may be in order to improve the product .



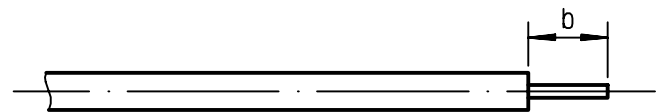
R161.051.000

ISSUE **0248K01** SERIES **N**



①

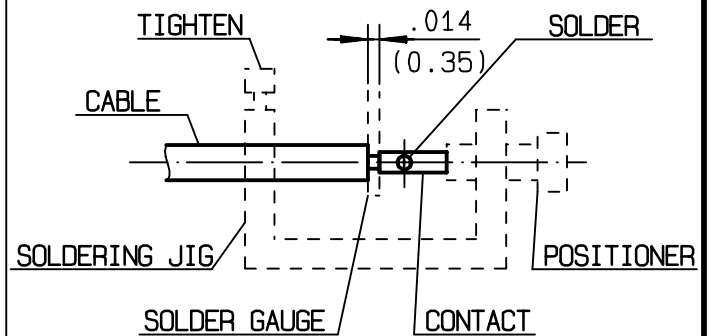
Take the tool kit : R 282 125 010 .
Strip the dielectric of the cable .
Stripping tool cable : R 282 053 .
Trimmer : R 282 066 010 .
Clean the cable .
-



| Stripping | a | b | c | d | e |
|-----------|---|---------|---|---|---|
| inch | 0 | 0.177 0 | 0 | 0 | 0 |
| mm | | 4.5 | | | |

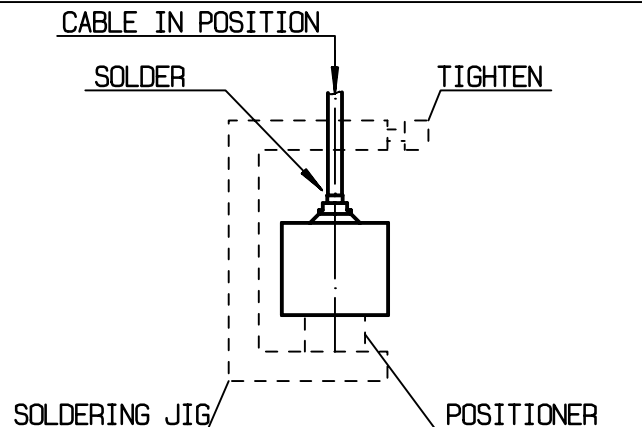
②

Screw the positioner R 282 744 261 onto the soldering jig R 282 740 030 .
Slide contact into positioner .
Insert solder gauge R 282 862 070 between contact and cable .
Tighten and solder the contact .



③

After cooling remove cable assembly from the jig .
Screw positioner R 282 744 340 into the connector .
Slide cable into the connector until it bottoms againsts positioner R 282 744 340 .
Tighten .
Put 3 rings of solder around the cable and solder .



④

After cooling remove cable assembly from the jig .
Screw female dielectric insert tool onto connector and cut the excess of dielectric with the dielectric recess tool R282 915 030 .
Insert insulator with the dielectric plunger .
Dielectric insert tool and dielectric plunger : R282 730 161 .

