

LIGHT-PIPE ASSEMBLY
SHOWN ASSEMBLED TO
IPASS CONNECTOR
(SEE NOTE 3)

NOTES :

1. MATERIALS:

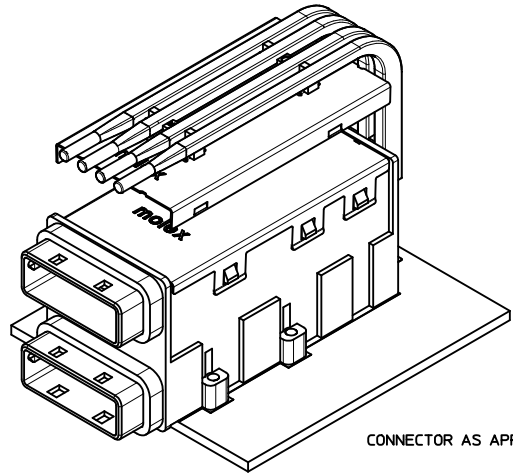
LIGHT PIPES: POLYCARBONATE, CLEAR.

MOUNTING BRACKET: STAINLESS STEEL ALLOY.

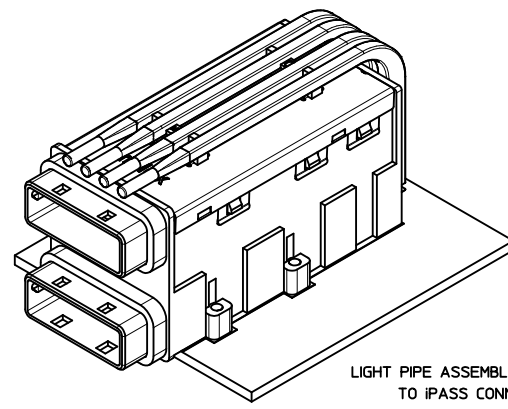
2. LIGHT PIPE ASSEMBLY #170416-0101 IS ATTACHED TO THE COVER OF CONNECTOR ASSEMBLIES 75758-0101 THRU 75758-0111 BY THE CUSTOMER.

3. IPASS CONNECTOR ASSEMBLIES 75758-0101 THRU 75758-0111 ARE SOLD SEPARATELY AND SHOWN FOR REFERENCE ONLY. SEE SALES DRAWING: SD-75758-010.

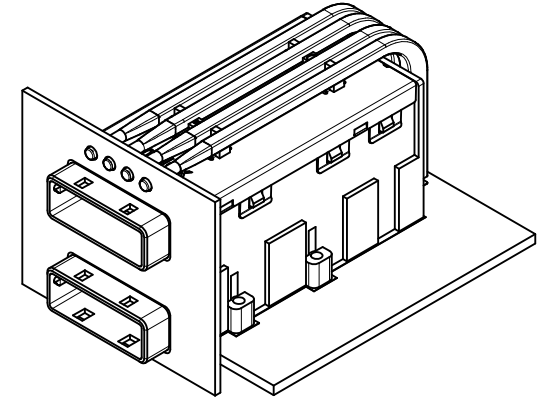
RELEASED EIC NO: UCP2012-1063 DRAWN BY: SBGJEL CHKD: MBANAKIS APPR: MBANAKIS 2011/09/19 2011/10/20	QUALITY SYMBOLS	GENERAL TOLERANCES (UNLESS SPECIFIED)	DIMENSION STYLE	SCALE	DESIGN UNITS	THIRD ANGLE PROJECTION
	▽=0	4 PLACES ± 0.15	MM ONLY	2:1	METRIC	ASSEMBLY, LIGHT PIPE FOR IPASS 26X26 STACKED 2X1
	▽=0	3 PLACES ± 0.13				MOLEX INCORPORATED
	▽=0	2 PLACES ± 0.25				SD-170416-0101
		ANGULAR ±1/2°				
		DRAFT WHERE APPLICABLE MUST REMAIN WITHIN DIMENSIONS				
			SIZE D			



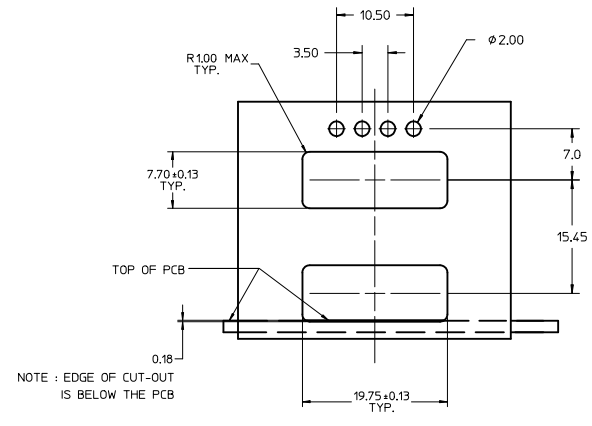
CONNECTOR AS APPLIED TO PCB



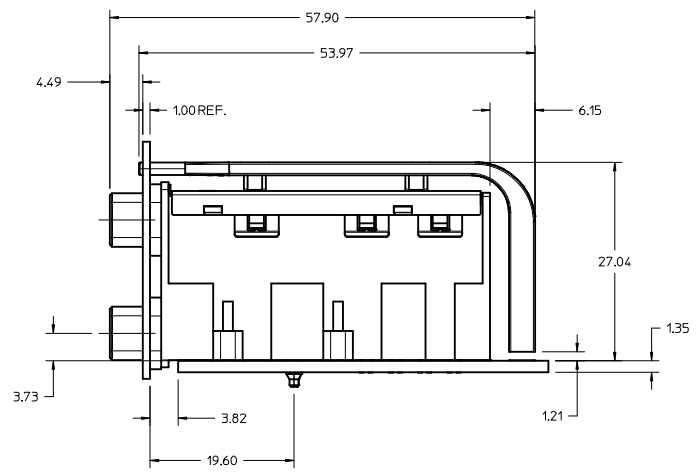
LIGHT PIPE ASSEMBLY AS APPLIED TO iPASS CONNECTOR



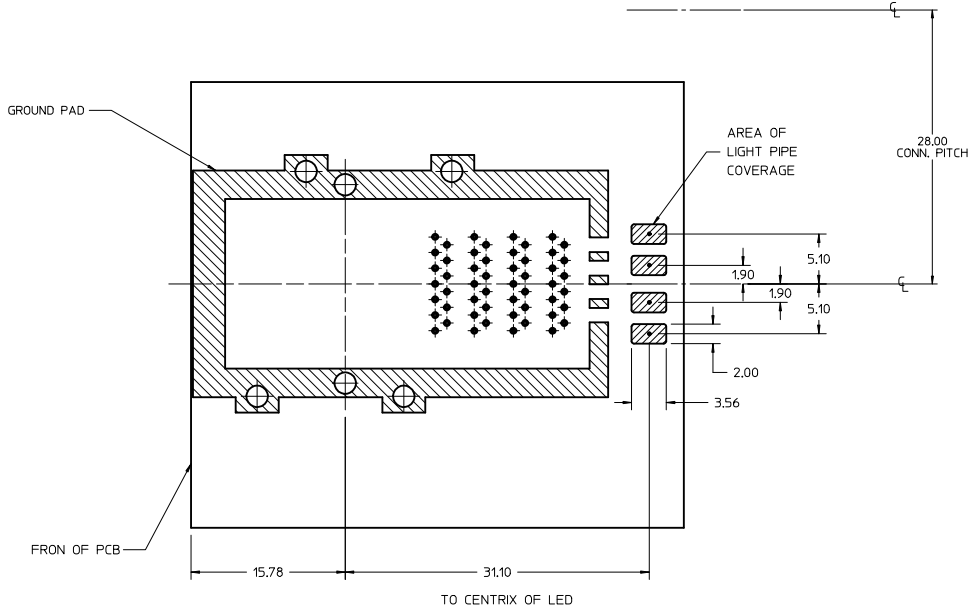
CONNECTOR ASSEMBLY FULLY ASSEMBLED AS INSTALLED IN PANEL



RECOMMENDED MOUNTING PANEL CUT-OUT (SUPPLIED BY CUSTOMER)



SEE SHEET 1 IEC NO: UCP2012-063 DRAWN: SBGIEL CHKD: MBANKIS APPR: MBANKIS DATE: 2011/09/19 DATE: 2011/10/20	QUALITY SYMBOLS	GENERAL TOLERANCES (UNLESS SPECIFIED)	DIMENSION STYLE	SCALE	DESIGN UNITS	THIRD ANGLE PROJECTION
	▽=0 ▽=0	mm INCH 4 PLACES ± --- ± --- 3 PLACES ± --- ± --- 2 PLACES ± 0.13 ± --- 1 PLACE ± 0.25 ± --- ANGULAR ± 1/2°	MM ONLY	3:1	METRIC	▽ ▽
	DRAFT WHERE APPLICABLE MUST REMAIN WITHIN DIMENSIONS	DRAWN BY: SBGIEL CHECKED BY: DATE: 2011/09/19 APPROVED BY: MBANKIS DATE: 2011/10/20	MATERIAL NO: 75758-010* DOCUMENT NO: SD-170416-0101	TITLE: ASSEMBLY, LIGHT PIPE FOR IPASS 26X26 STACKED 2X1 MOLEX INCORPORATED	SHEET NO: 2 OF 3	
	THIS DRAWING CONTAINS INFORMATION THAT IS PROPRIETARY TO MOLEX INCORPORATED AND SHOULD NOT BE USED WITHOUT WRITTEN PERMISSION					

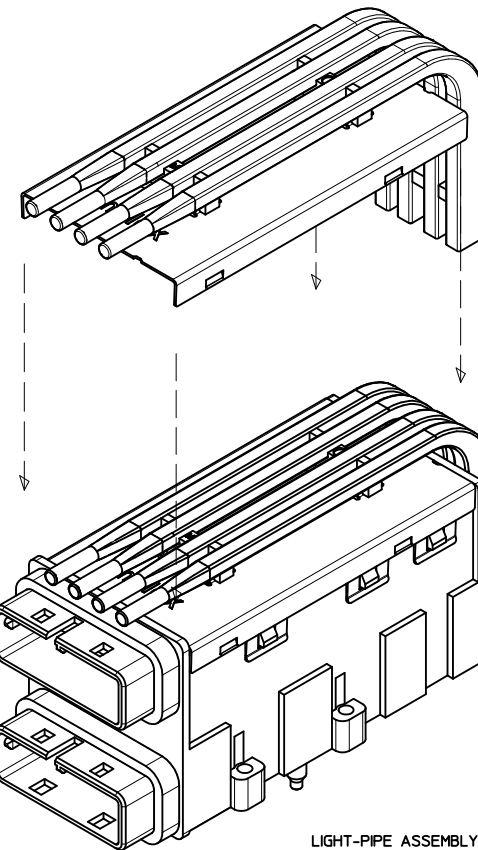
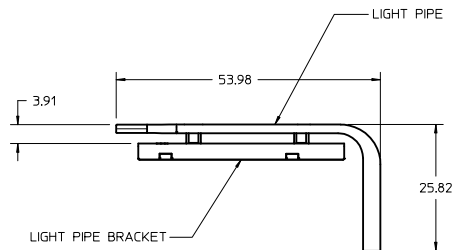
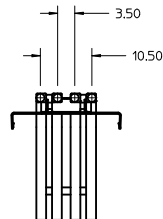
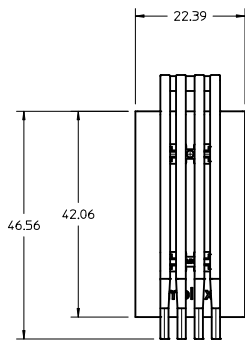


RECOMMENDED PCB LAYOUT

THICKNESS = 1.35mm MIN.

NOTE:
1. DIMENSIONS SHOWN ARE FOR LED PLACEMENT ONLY.
SEE SALES DRAWING SD-75758-010 FOR DETAILED
PCB LAYOUT AND SPECIFICATIONS.

SEE SHEET 1 IEC NO: UCP2012-1063 DRAWN: SBOGIEL CHKD: APPR: MBANKIS REV:	2011/09/19 2011/10/20	QUALITY SYMBOLS ▽=0 ▽=0	GENERAL TOLERANCES (UNLESS SPECIFIED) mm INCH 4 PLACES ±.10 ±.004 3 PLACES ±.15 ±.006 2 PLACES ±.25 ±.010 1 PLACE ±.50 ±.020 ANGULAR ±1/2°	DIMENSION STYLE MM ONLY	SCALE 2:1	DESIGN UNITS METRIC	THIRD ANGLE PROJECTION	
	DRAWN BY SBOGIEL	DATE 2011/09/19	CHECKED BY DATE	TITLE ASSEMBLY, LIGHT PIPE FOR IPASS 26X26 STACKED 2X1	APPROVED BY MBANKIS	DATE 2011/10/20	MATERIAL NO. 75758-010*	DOCUMENT NO. SD-170416-0101
	DRAFT WHERE APPLICABLE MUST REMAIN WITHIN DIMENSIONS	SIZE D	THIS DRAWING CONTAINS INFORMATION THAT IS PROPRIETARY TO MOLEX INCORPORATED AND SHOULD NOT BE USED WITHOUT WRITTEN PERMISSION	SHEET NO. 3 OF 3				



LIGHT-PIPE ASSEMBLY
SHOWN ASSEMBLED TO
IPASS CONNECTOR
(SEE NOTE 3)

NOTES :

1. MATERIALS:

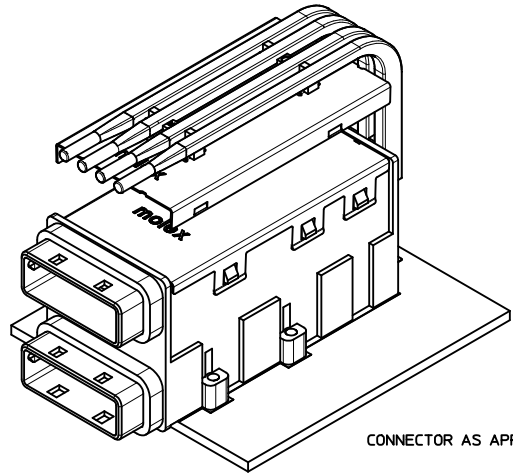
LIGHT PIPES: POLYCARBONATE, CLEAR.

MOUNTING BRACKET: STAINLESS STEEL ALLOY.

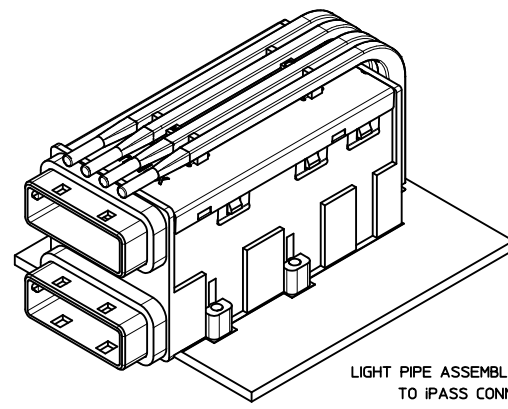
2. LIGHT PIPE ASSEMBLY #170416-0101 IS ATTACHED TO THE COVER OF CONNECTOR ASSEMBLIES 75758-0101 THRU 75758-0111 BY THE CUSTOMER.

3. IPASS CONNECTOR ASSEMBLIES 75758-0101 THRU 75758-0111 ARE SOLD SEPARATELY AND SHOWN FOR REFERENCE ONLY. SEE SALES DRAWING: SD-75758-010.

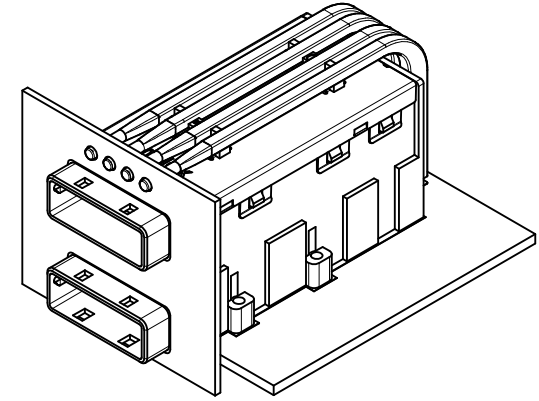
RELEASED EIC NO: UCP2012-1063 DRAWN BY: SBGJEL CHKD: MBANAKIS APPR: MBANAKIS DATE: 2011/09/19 2011/10/20	QUALITY SYMBOLS	GENERAL TOLERANCES (UNLESS SPECIFIED)	DIMENSION STYLE	SCALE	DESIGN UNITS	THIRD ANGLE PROJECTION
	▽=0	4 PLACES ± 0.13	MM ONLY	2:1	METRIC	ASSEMBLY, LIGHT PIPE FOR IPASS 26X26 STACKED 2X1
	▽=0	3 PLACES ± 0.25				MOLEX INCORPORATED
	▽=0	1 PLACE ± 0.25				SD-170416-0101
		ANGULAR ±1/2°				
		DRAFT WHERE APPLICABLE MUST REMAIN WITHIN DIMENSIONS				
			SIZE D			



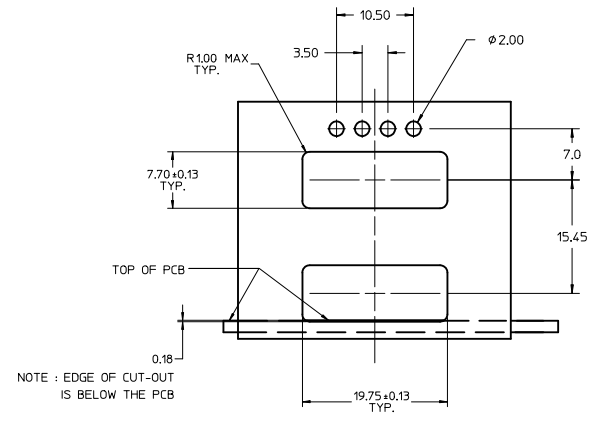
CONNECTOR AS APPLIED TO PCB



LIGHT PIPE ASSEMBLY AS APPLIED TO iPASS CONNECTOR

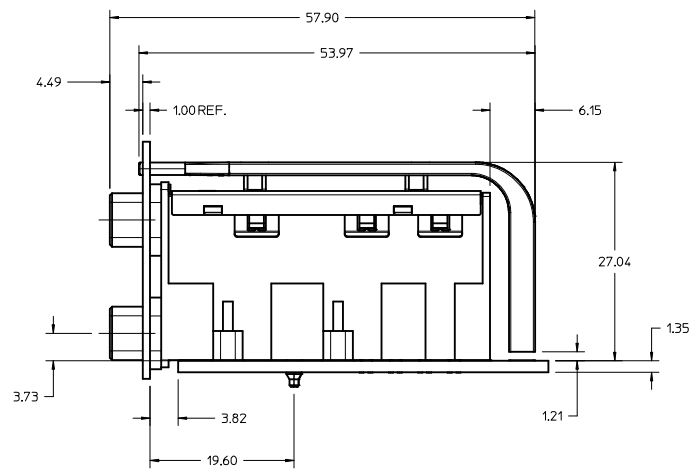


CONNECTOR ASSEMBLY FULLY ASSEMBLED AS INSTALLED IN PANEL

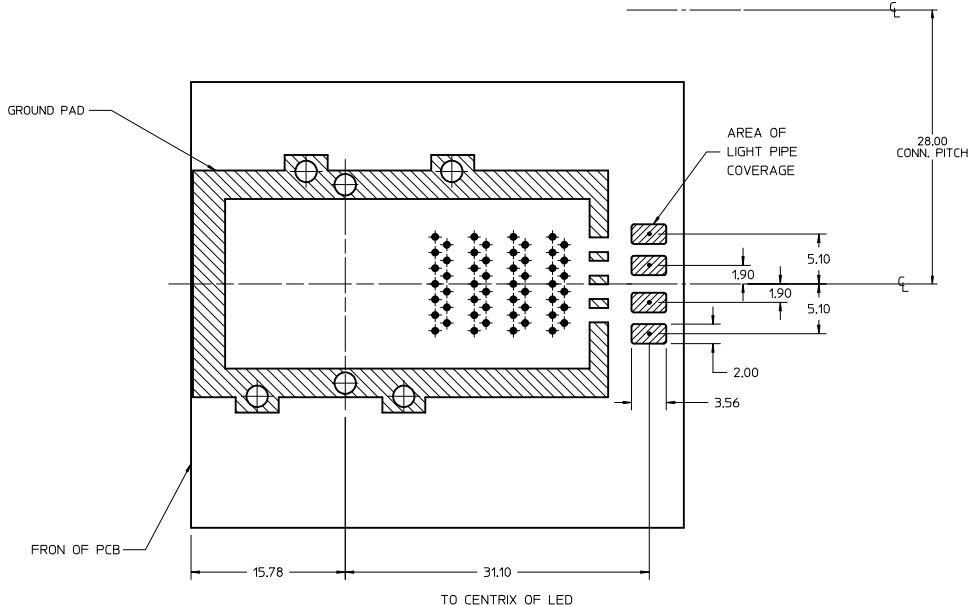


RECOMMENDED MOUNTING PANEL CUT-OUT (SUPPLIED BY CUSTOMER)

MAXIMUM THICKNESS 1.50mm



SEE SHEET 1 IEC NO: UCP2012-063 DRAWN: SBGIEL CHKD: MBANKIS APPR: MBANKIS DATE: 2011/09/19 DATE: 2011/10/20	QUALITY SYMBOLS	GENERAL TOLERANCES (UNLESS SPECIFIED)	DIMENSION STYLE	SCALE	DESIGN UNITS	THIRD ANGLE PROJECTION
	▽=0 ▽=0	mm INCH 4 PLACES ± --- ± --- 3 PLACES ± --- ± --- 2 PLACES ± 0.13 ± --- 1 PLACE ± 0.25 ± --- ANGULAR ± 1/2°	MM ONLY	3:1	METRIC	▽ ▽
	DRAFT WHERE APPLICABLE MUST REMAIN WITHIN DIMENSIONS	DRAWN BY: SBGIEL CHECKED BY: MBANKIS DATE: 2011/09/19 DATE: 2011/10/20	MATERIAL NO: 75758-010* DOCUMENT NO: SD-170416-0101	TITLE: ASSEMBLY, LIGHT PIPE FOR IPASS 26X26 STACKED 2X1 MOLEX INCORPORATED	SHEET NO: 2 OF 3	
	THIS DRAWING CONTAINS INFORMATION THAT IS PROPRIETARY TO MOLEX INCORPORATED AND SHOULD NOT BE USED WITHOUT WRITTEN PERMISSION					



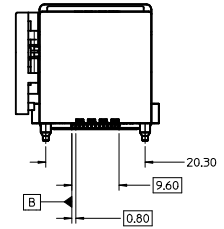
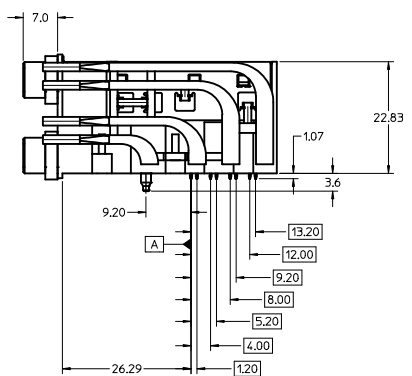
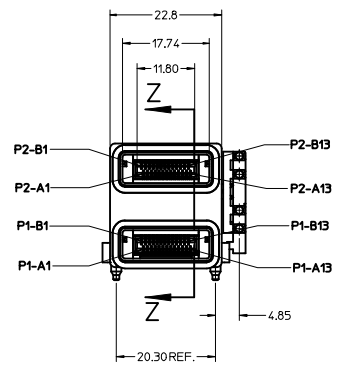
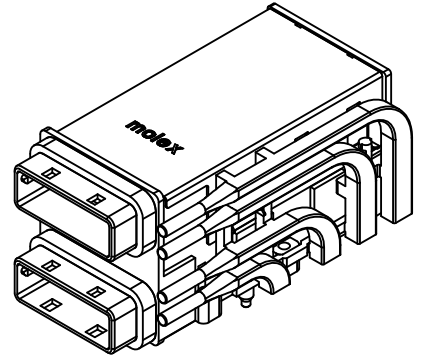
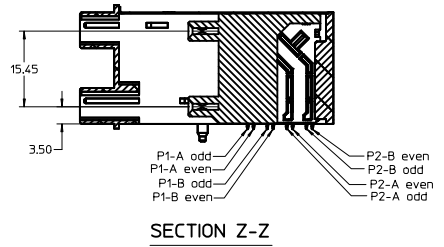
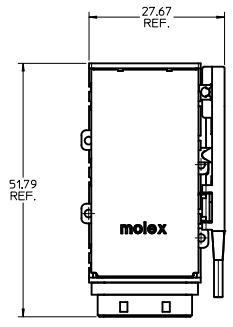
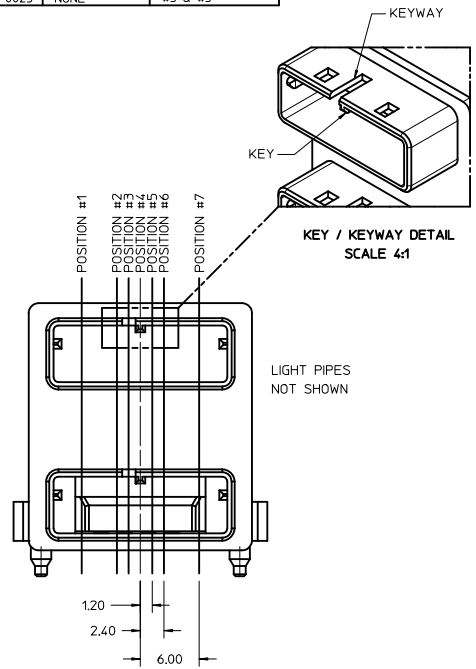
RECOMMENDED PCB LAYOUT

THICKNESS = 1.35mm MIN.

NOTE:
1. DIMENSIONS SHOWN ARE FOR LED PLACEMENT ONLY.
SEE SALES DRAWING SD-75758-010 FOR DETAILED
PCB LAYOUT AND SPECIFICATIONS.

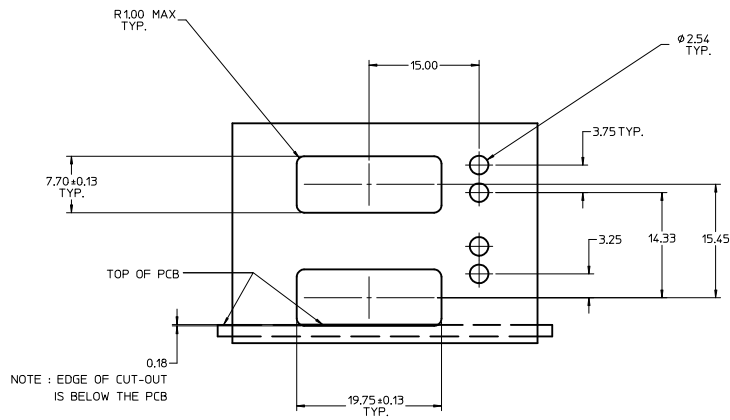
SEE SHEET 1 IEC NO: UCP2012-1063 DRAWN: SBOGIEL CHKD: APPROVED: MBANKIS DATE: 2011/09/19 DATE: 2011/10/20	QUALITY SYMBOLS	GENERAL TOLERANCES (UNLESS SPECIFIED)	DIMENSION STYLE	SCALE	DESIGN UNITS	THIRD ANGLE PROJECTION
	▽=0 ▽=0	mm INCH 4 PLACES ±.10 ±.004 3 PLACES ±.15 ±.005 2 PLACES ±.25 ±.008 1 PLACE ±.50 ±.015 ANGULAR ±1/2°	MM ONLY DRAWN BY: SBOGIEL DATE: 2011/09/19 CHECKED BY: DATE:	2:1	METRIC	ASSEMBLY, LIGHT PIPE FOR IPASS 26X26 STACKED 2X1 MOLEX INCORPORATED
	DRAFT WHERE APPLICABLE MUST REMAIN WITHIN DIMENSIONS	MATERIAL NO. 75758-010* DOCUMENT NO. SD-170416-0101	APPROVED BY: MBANKIS DATE: 2011/10/20 DATE:			SHEET NO. 3 OF 3
			THIS DRAWING CONTAINS INFORMATION THAT IS PROPRIETARY TO MOLEX INCORPORATED AND SHOULD NOT BE USED WITHOUT WRITTEN PERMISSION			

KEY/KEYWAY OPTIONS			
PART NUMBER	KEY POSITION	KEYWAY POSITION	
TIN/LEAD	LEAD-FREE		
75758-0001	75758-0021	NONE	NONE
75758-0002	75758-0022	#3	NONE
75758-0003	75758-0023	#4	NONE
75758-0004	75758-0024	#4	#3 & #5
75758-0005	75758-0025	NONE	#3 & #5



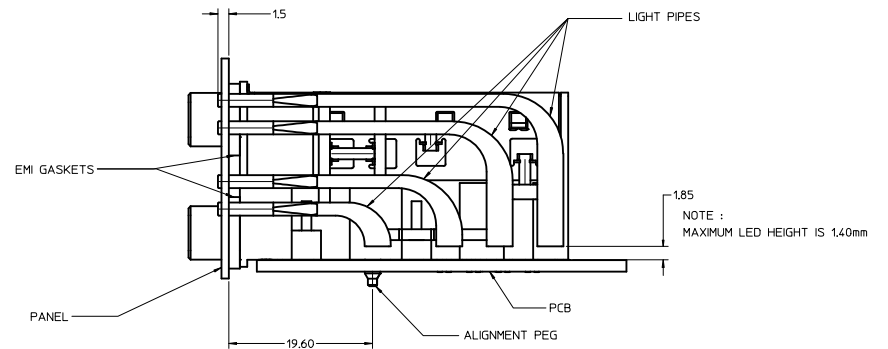
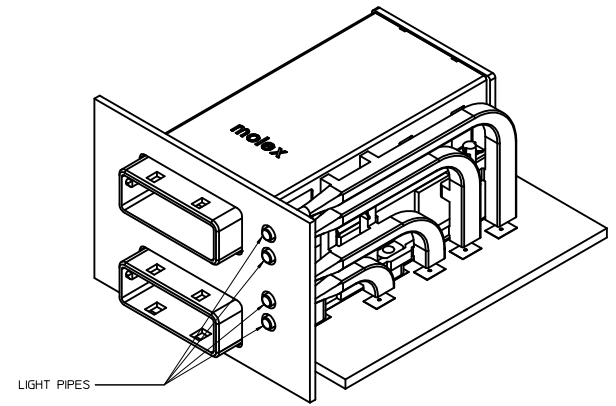
- NOTES :
- MATERIALS :
 CONNECTOR HOUSING - HIGH TEMP THERMOPLASTIC,
 GLASS-FILLED, UL94V-0,
 COLOR - BLACK
 EMI HOUSING - DIE CAST ALLOY, NICKEL PLATED FINISH
 COVER - STAINLESS STEEL ALLOY
 CPI TERMINALS - COPPER ALLOY
 EMI GASKETS - CONDUCTIVE POLYMER
 LIGHT PIPE - CLEAR THERMOPLASTIC, UL94V-0
 - TERMINAL PLATING :
 CONTACT AREA - 0.76µ MIN GOLD OVER 2.54µ MIN NICKEL.
 COMPLIANT AREA - 0.76-1.52µ TIN/LEAD (90/10) OVER
 2.54µ MIN NICKEL.
 - PACKAGING SPECIFICATION : TRAY PACK IN BOX.
 - REFER TO PS-75586-001 PRODUCT SPEC FOR ALL ELECTRICAL, MECHANICAL AND ENVIRONMENTAL SPECIFICATIONS.
 - THIS CONNECTOR IS DESIGNED TO MATE WITH MOLEX CABLE SERIES 74548.
 - REQUIRES MOUNTING HARDWARE : (4) M2 X 8MM CAP SCREWS OR EQUIV.
 MAX. TORQUE 2.3 in/lbs.

ADD LEAD-FREE #'s EC NO. UCP2012-1003 DRAWN BY: DRWNSBROGIEL CHKD: APPR: MBANKS REV DESCRIPTION DATE 1 2011/10/13 2 2011/10/20	QUALITY SYMBOLS ∇=0 ∇=0 ∇=0	GENERAL TOLERANCES (UNLESS SPECIFIED) mm INCH 4 PLACES ±.15 ±.005 3 PLACES ±.25 ±.010 2 PLACES ±.38 ±.015 1 PLACE ±.51 ±.020 ANGULAR ±1/2°		DIMENSION STYLE MM ONLY	SCALE 2:1	DESIGN UNITS METRIC	THIRD ANGLE PROJECTION
		DRAFT WHERE APPLICABLE MUST REMAIN WITHIN DIMENSIONS		DRAWN BY: J JANTELEZ10 DATE: 02/05/2008 CHECKED BY: KLANG DATE: 02/05/2008 APPROVED BY: BANAKIS DATE: 02/05/2008	MATERIAL NO. 75758-000*	DOCUMENT NO. SD-75758-001	TITLE IPASS STACKED 26/26 CIRCUIT CONNECTOR W/LIGHT PIPES



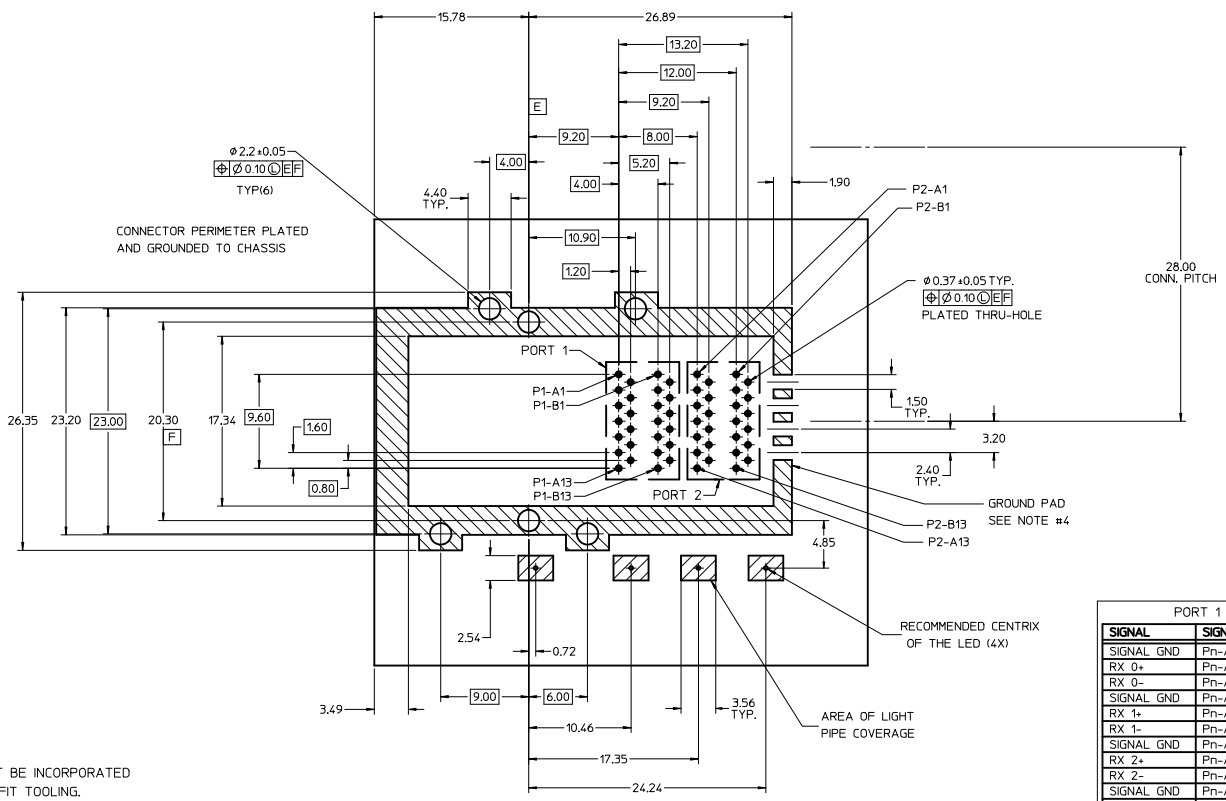
PANEL CUT-OUT

MAXIMUM THICKNESS = 1.50
(NOT SUPPLIED)



ASSEMBLY VIEW

SEE SHEET 1 EEC NO: UCP2012-1063 DRAWN: SROGIEL 2011/10/13 CHKD: APPR: HBANKIS 2011/10/20	QUALITY SYMBOLS ▽=0 ▽=0 ▽=0	GENERAL TOLERANCES (UNLESS SPECIFIED) <table border="1"> <tr> <th></th> <th>mm</th> <th>INCH</th> </tr> <tr> <td>4 PLACES</td> <td>±---</td> <td>±---</td> </tr> <tr> <td>3 PLACES</td> <td>±---</td> <td>±---</td> </tr> <tr> <td>2 PLACES</td> <td>±0.25</td> <td>±---</td> </tr> <tr> <td>1 PLACE</td> <td>±0.25</td> <td>±---</td> </tr> <tr> <td colspan="3">ANGULAR ±1/2°</td> </tr> </table>		mm	INCH	4 PLACES	±---	±---	3 PLACES	±---	±---	2 PLACES	±0.25	±---	1 PLACE	±0.25	±---	ANGULAR ±1/2°			DIMENSION STYLE MM ONLY	SCALE 3:1	DESIGN UNITS METRIC	THIRD ANGLE PROJECTION
		mm	INCH																					
	4 PLACES	±---	±---																					
	3 PLACES	±---	±---																					
2 PLACES	±0.25	±---																						
1 PLACE	±0.25	±---																						
ANGULAR ±1/2°																								
DRAWN BY J JANTELEZIO 02/05/2008	DATE 02/05/2008	CHECKED BY KLANG 02/05/2008	DATE 02/05/2008	TITLE IPASS STACKED 26/26 CIRCUIT CONNECTOR W/LIGHT PIPES																				
APPROVED BY BANAKIS 02/05/2008	DATE 02/05/2008	MATERIAL NO. 75758-000*		DOCUMENT NO. SD-75758-001																				
DRAFT WHERE APPLICABLE MUST REMAIN WITHIN DIMENSIONS			SIZE D	THIS DRAWING CONTAINS INFORMATION THAT IS PROPRIETARY TO MOLEX INCORPORATED AND SHOULD NOT BE USED WITHOUT WRITTEN PERMISSION																				



PORT 1		PORT 2	
SIGNAL	SIGNAL PIN	SIGNAL	SIGNAL PIN
SIGNAL GND	Pn-A1	SIGNAL GND	Pn-B1
RX 0+	Pn-A2	TX 0+	Pn-B2
RX 0-	Pn-A3	TX 0-	Pn-B3
SIGNAL GND	Pn-A4	SIGNAL GND	Pn-B4
RX 1+	Pn-A5	TX 1+	Pn-B5
RX 1-	Pn-A6	TX 1-	Pn-B6
SIGNAL GND	Pn-A7	SIGNAL GND	Pn-B7
RX 2+	Pn-A8	TX 2+	Pn-B8
RX 2-	Pn-A9	TX 2-	Pn-B9
SIGNAL GND	Pn-A10	SIGNAL GND	Pn-B10
RX 3+	Pn-A11	TX 3+	Pn-B11
RX 3-	Pn-A12	TX 3-	Pn-B12
SIGNAL GND	Pn-A13	SIGNAL GND	Pn-B13

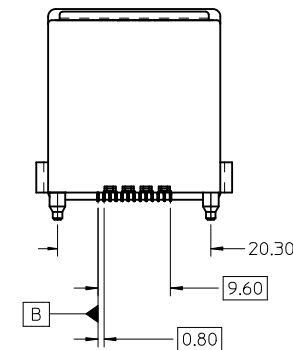
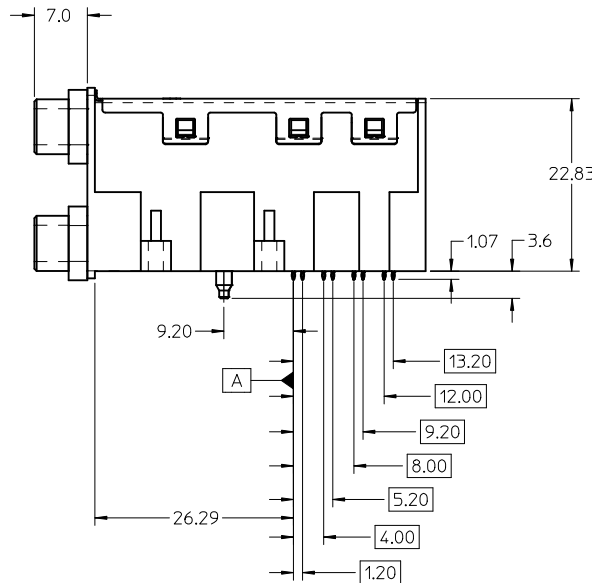
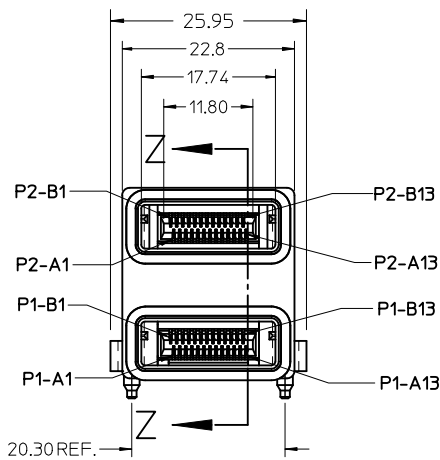
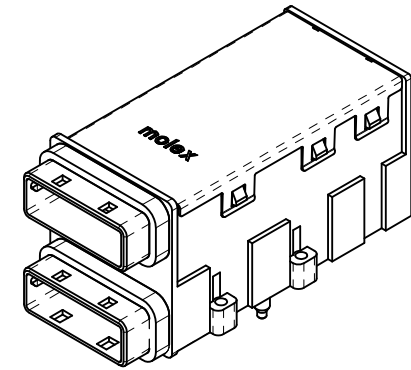
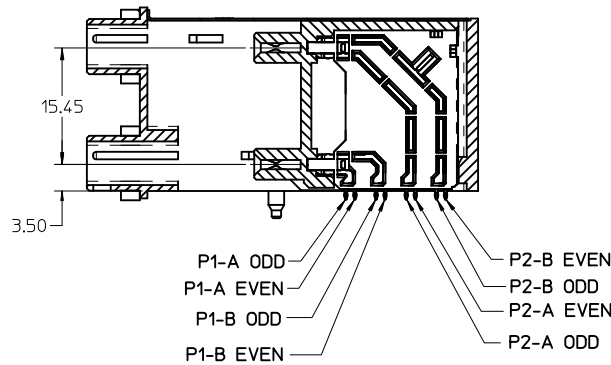
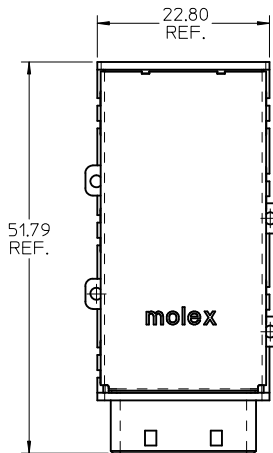
PIN ASSIGNMENT

- NOTES:
- CROSS-HATCHED AREA MUST BE INCORPORATED IN THE FLAT ROCK PRESS-FIT TOOLING.
 - RECOMMENDED LED'S INCLUDE THE FOLLOWING :
DIALIGHT : 597-77x1-5xx SERIES
CHICAGO MINIATURE : 7016 SERIES
KINGBRIGHT : APBL3025 SERIES (BICOLOR)
APL3015 SERIES (SINGLE COLOR)
 - LED'S MUST HAVE A MAXIMUM HEIGHT OF 1.4mm AND A MINIMUM HEIGHT OF 0.7mm
 - PLATE GROUND PAD WITH EMERSON SILVER OR GOLD.
 - RECOMMENDED DRILL SIZE FOR 0.37 ϕ FINISHED PTH IS 0.457 ϕ (#77 DRILL)
 - RECOMMENDED ANNULAR RING AROUND 0.37 ϕ FINISHED PTH IS 0.73 ϕ

RECOMMENDED PCB LAYOUT

THICKNESS = 1.35mm MIN.

SEE SHEET 1 EIC NO: UCP2012-1063 DRAWN BY: DRWNSB001EL CHKD: APPR:BNANKIS DATE: 2011/10/20	QUALITY SYMBOLS	GENERAL TOLERANCES (UNLESS SPECIFIED)	DIMENSION STYLE	SCALE	DESIGN UNITS	THIRD ANGLE PROJECTION	
	$\nabla=0$	4 PLACES \pm mm \pm INCH	MM ONLY	2:1	METRIC		
	$\nabla=0$	3 PLACES ± 0.25 \pm					
	$\nabla=0$	1 PLACE ± 0.25 \pm					
		ANGULAR $\pm 1/2^\circ$					
		DRAFT WHERE APPLICABLE MUST REMAIN WITHIN DIMENSIONS					
			DRAWN BY: JJANTELEZ10 DATE: 02/05/2008		TITLE: IPASS STACKED 26/26 CIRCUIT CONNECTOR W/LIGHT PIPES		
			CHECKED BY: KLANG DATE: 02/05/2008		MOLEX INCORPORATED		
			APPROVED BY: BANAKIS DATE: 02/05/2008		SD-75758-001		
			MATERIAL NO: 75758-000*		DOCUMENT NO:	SHEET NO: 3 OF 3	
			THIS DRAWING CONTAINS INFORMATION THAT IS PROPRIETARY TO MOLEX INCORPORATED AND SHOULD NOT BE USED WITHOUT WRITTEN PERMISSION				



NOTES :

1. MATERIALS :

CONNECTOR HOUSING - HIGH TEMP THERMOPLASTIC,
GLASS-FILLED, UL94V-0,
COLOR - BLACK

EMI HOUSING - DIE CAST ALLOY, NICKEL PLATED FINISH
COVER - STAINLESS STEEL ALLOY
CPI TERMINALS - COPPER ALLOY
EMI GASKETS - CONDUCTIVE POLYMER

2. TERMINAL PLATING :

CONTACT AREA - 0.76μ MIN GOLD OVER 2.54μ MIN NICKEL.
COMPLIANT AREA - 0.76-1.52μ TIN/LEAD (90/10) OVER
1.27μ MIN NICKEL.

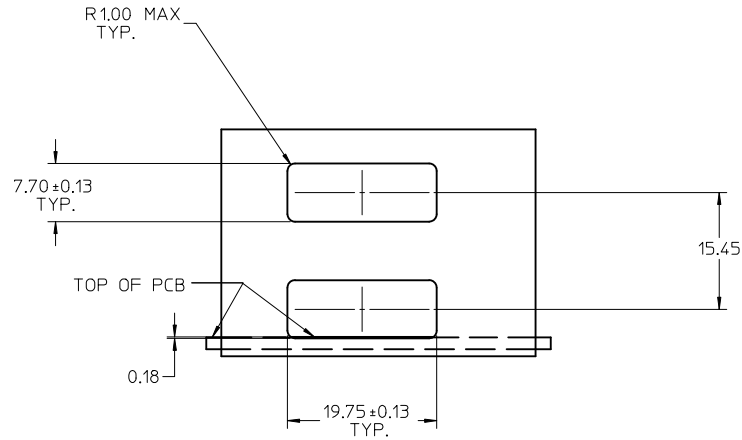
3. PACKAGING SPECIFICATION : TRAY PACK (TBD)

4. REFER TO PS-75586-001 PRODUCT SPEC FOR ALL ELECTRICAL, MECHANICAL
AND ENVIRONMENTAL SPECIFICATIONS.

5. THIS CONNECTOR IS DESIGNED TO MATE WITH MOLEX CABLE SERIES 74548.

6. REQUIRES MOUNTING HARDWARE : (4) M2 X 8MM CAP SCREWS OR EQUIV.
MAX. TORQUE 2.3 in/lbs.

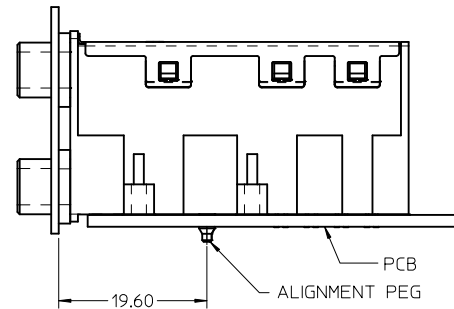
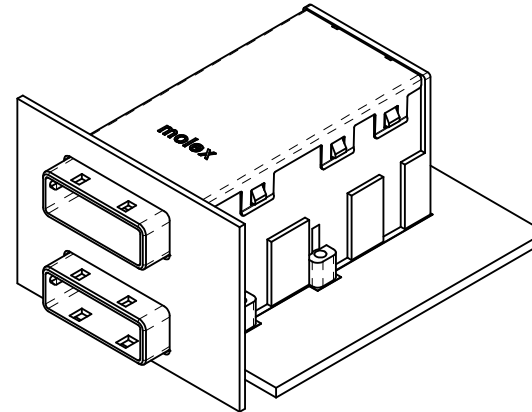
UPD TERM PLATING EC NO: UCP2011-3957 DRWNG: GONZALEZ01 2011/06/21 CHKD: KLANG 2011/06/21 APPR: MBANAKIS 2011/07/06	QUALITY SYMBOLS	GENERAL TOLERANCES (UNLESS SPECIFIED)	DIMENSION STYLE		SCALE	DESIGN UNITS	THIRD ANGLE PROJECTION
	▽=0 ▽=0		MM ONLY	2:1	METRIC		
REV	DESCRIPTION	mm	INCH	DRAWN BY	DATE	TITLE	
		4 PLACES ± --- ± ---	± --- ± ---	JJANTELEZ10	01/23/08	IPASS STACKED 26/26 CIRCUIT CONNECTOR	
		3 PLACES ± --- ± ---	± --- ± ---	CHECKED BY	DATE	MOLEX INCORPORATED	
		2 PLACES ± 0.25 ± ---	± --- ± ---	KLANG	01/23/08		
		1 PLACE ± 0.25 ± ---	± --- ± ---	APPROVED BY	DATE	MOLEX INCORPORATED	
		ANGULAR ±1/2°		MBANAKIS	01/23/08		
		DRAFT WHERE APPLICABLE MUST REMAIN WITHIN DIMENSIONS		MATERIAL NO.	DOCUMENT NO.	SHEET NO.	
				SEE CHART	SD-75758-002	1 OF 3	
				THIS DRAWING CONTAINS INFORMATION THAT IS PROPRIETARY TO MOLEX INCORPORATED AND SHOULD NOT BE USED WITHOUT WRITTEN PERMISSION			



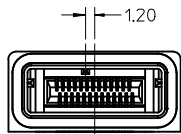
PANEL CUT-OUT

MAXIMUM THICKNESS = 1.50
(NOT SUPPLIED)

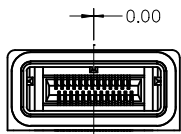
NOTE : EDGE OF CUT-OUT
IS BELOW THE PCB



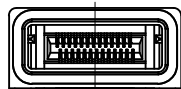
ASSEMBLY VIEW



KEY WAY - 3



KEY WAY - 4



KEY WAY - NONE

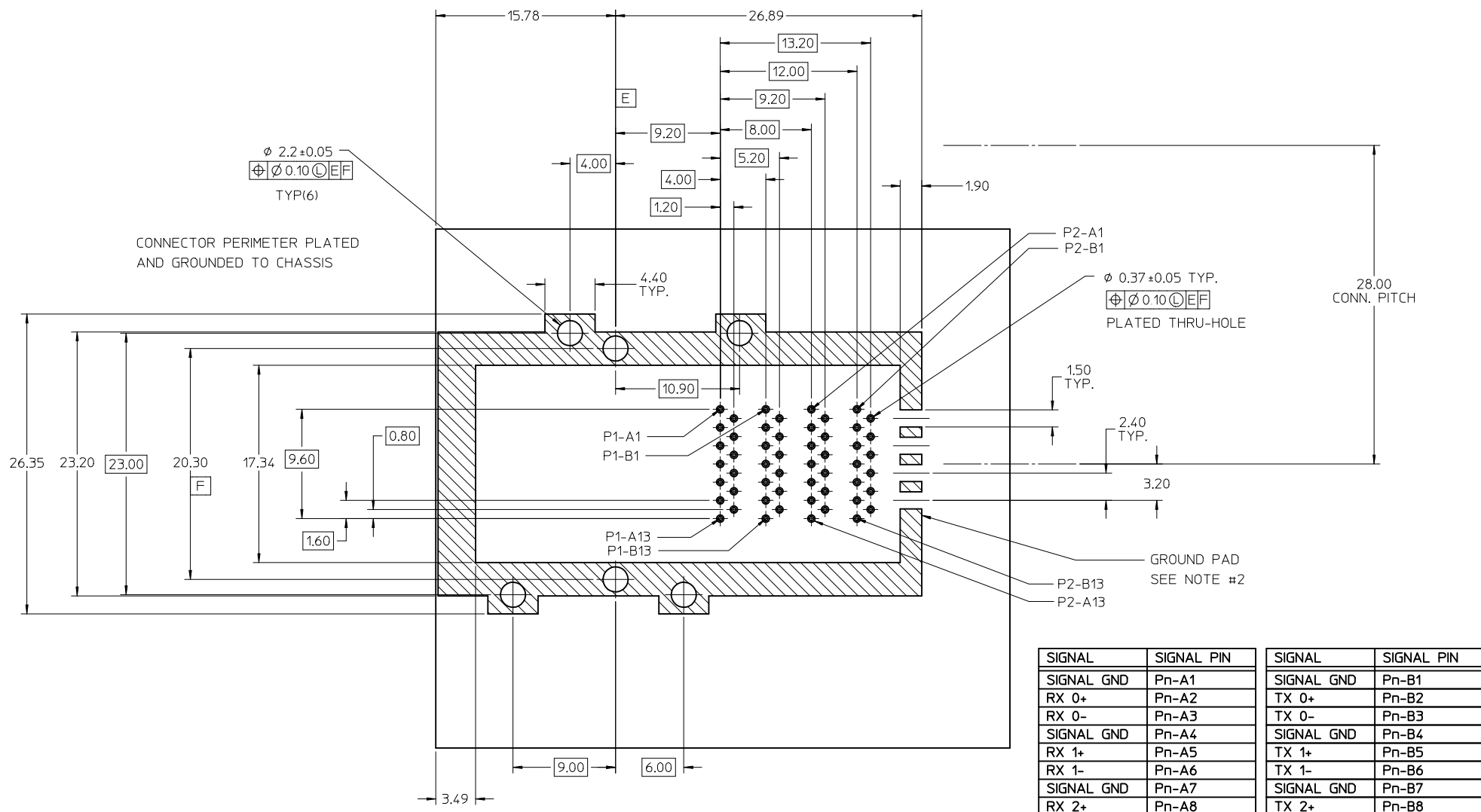
KEY WAY OPTIONS

PART NUMBER	KEY WAY
75758-0101	NONE
75758-0102	#3
75758-0103	#4
-	-
-	-
-	-
-	-
-	-
-	-

SEE SHEET 1 EC NO: UCP2011-3957 DRWN: JGONZALEZ01 2011/06/21 CHKD: KLANG 2011/06/21 APPR: MBANAKIS 2011/07/06	QUALITY SYMBOLS	GENERAL TOLERANCES (UNLESS SPECIFIED) <table border="1"> <tr> <td></td> <td>mm</td> <td>INCH</td> </tr> <tr> <td>4 PLACES</td> <td>± ---</td> <td>± ---</td> </tr> <tr> <td>3 PLACES</td> <td>± ---</td> <td>± ---</td> </tr> <tr> <td>2 PLACES</td> <td>± 0.25</td> <td>± ---</td> </tr> <tr> <td>1 PLACE</td> <td>± 0.25</td> <td>± ---</td> </tr> </table> ANGULAR ±1/2°		mm	INCH	4 PLACES	± ---	± ---	3 PLACES	± ---	± ---	2 PLACES	± 0.25	± ---	1 PLACE	± 0.25	± ---
			mm	INCH													
4 PLACES	± ---	± ---															
3 PLACES	± ---	± ---															
2 PLACES	± 0.25	± ---															
1 PLACE	± 0.25	± ---															
REV	DESCRIPTION																

DRAFT WHERE APPLICABLE MUST REMAIN WITHIN DIMENSIONS	DIMENSION STYLE MM ONLY	SCALE 2:1	DESIGN UNITS METRIC	THIRD ANGLE PROJECTION
	DRAWN BY JJANTELEZIO	DATE 01/23/08	TITLE IPASS STACKED 26/26 CIRCUIT CONNECTOR	
	CHECKED BY KLANG	DATE 01/23/08	MOLEX INCORPORATED	
	APPROVED BY MBANAKIS	DATE 01/23/08	MATERIAL NO. DOCUMENT NO. SD-75758-002	
	SEE SHEET 1	SIZE C	SHEET NO. 2 OF 3	

THIS DRAWING CONTAINS INFORMATION THAT IS PROPRIETARY TO MOLEX INCORPORATED AND SHOULD NOT BE USED WITHOUT WRITTEN PERMISSION



- NOTES :
- CROSS-HATCHED AREA MUST BE INCORPORATED IN THE FLAT ROCK PRESS-FIT TOOLING.
 - PLATE GROUND PAD WITH EMERSION SILVER OR GOLD.
 - RECOMMENDED DRILL SIZE FOR 0.37 ϕ FINISHED PTH IS 0.457 ϕ (#77 DRILL)
 - RECOMMENDED ANNULAR RING AROUND 0.37 ϕ FINISHED PTH IS 0.73 ϕ

SIGNAL	SIGNAL PIN	SIGNAL	SIGNAL PIN
SIGNAL GND	Pn-A1	SIGNAL GND	Pn-B1
RX 0+	Pn-A2	TX 0+	Pn-B2
RX 0-	Pn-A3	TX 0-	Pn-B3
SIGNAL GND	Pn-A4	SIGNAL GND	Pn-B4
RX 1+	Pn-A5	TX 1+	Pn-B5
RX 1-	Pn-A6	TX 1-	Pn-B6
SIGNAL GND	Pn-A7	SIGNAL GND	Pn-B7
RX 2+	Pn-A8	TX 2+	Pn-B8
RX 2-	Pn-A9	TX 2-	Pn-B9
SIGNAL GND	Pn-A10	SIGNAL GND	Pn-B10
RX 3+	Pn-A11	TX 3+	Pn-B11
RX 3-	Pn-A12	TX 3-	Pn-B12
SIGNAL GND	Pn-A13	SIGNAL GND	Pn-B13

Pn - 'n' DENOTES PORT NUMBER

RECOMMENDED PCB LAYOUT

THICKNESS = 1.35mm MIN.

SEE SHEET 1 EC NO: UCP2011-3957 DRWN: JGONZALEZ01 2011/06/21 CHKD: KLANG 2011/06/21 APPR: MBANAKIS 2011/07/06	QUALITY SYMBOLS	GENERAL TOLERANCES (UNLESS SPECIFIED)	DIMENSION STYLE	SCALE	DESIGN UNITS	THIRD ANGLE PROJECTION	
	▽=0		mm	2:1	METRIC		
	▽=0		INCH	MM ONLY			

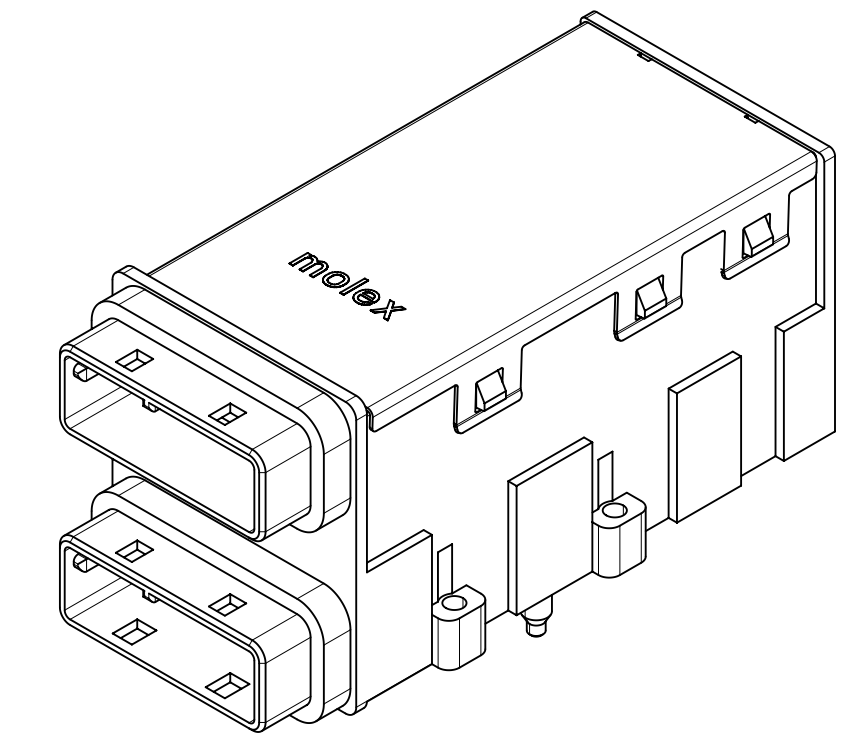
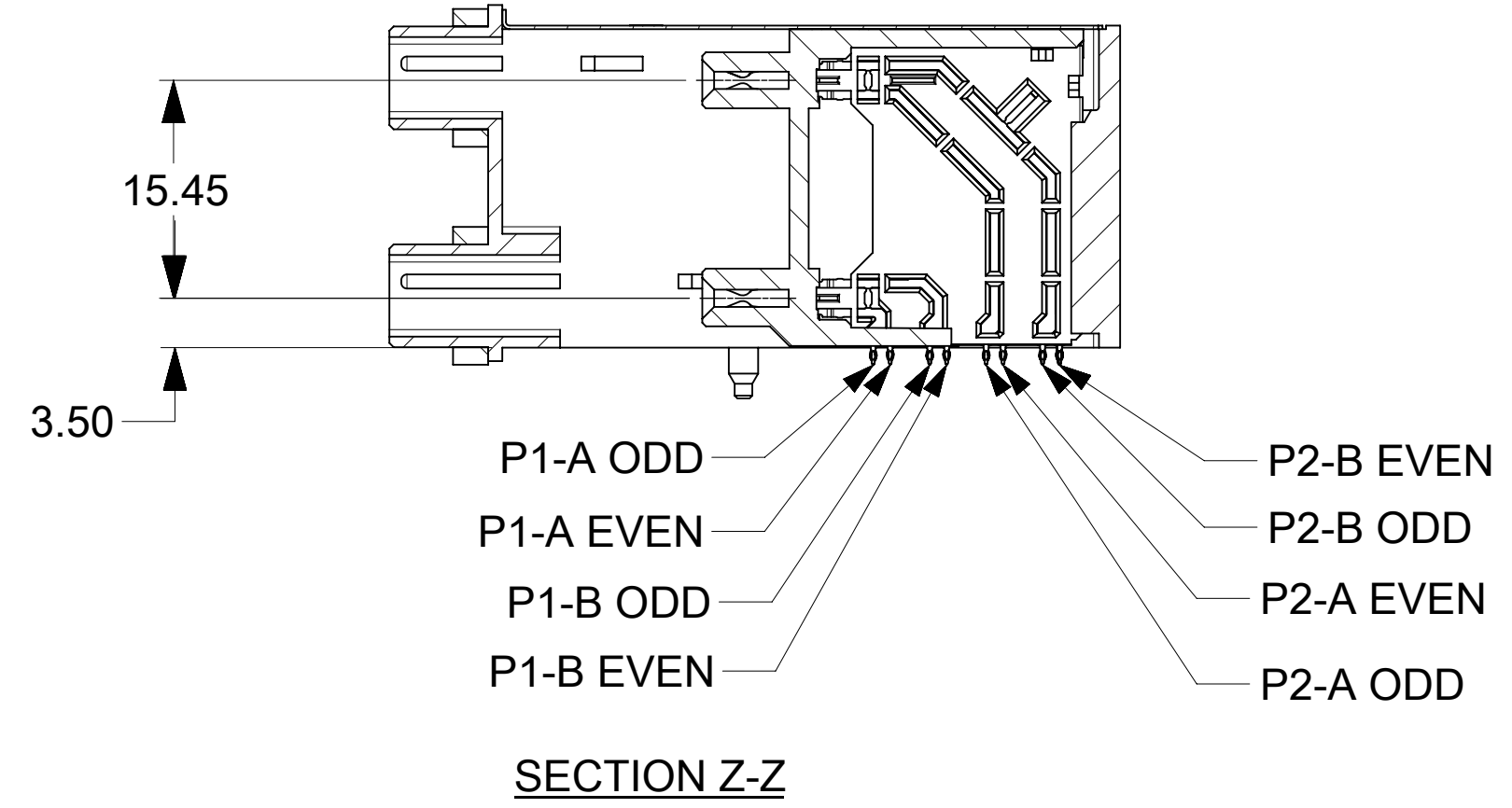
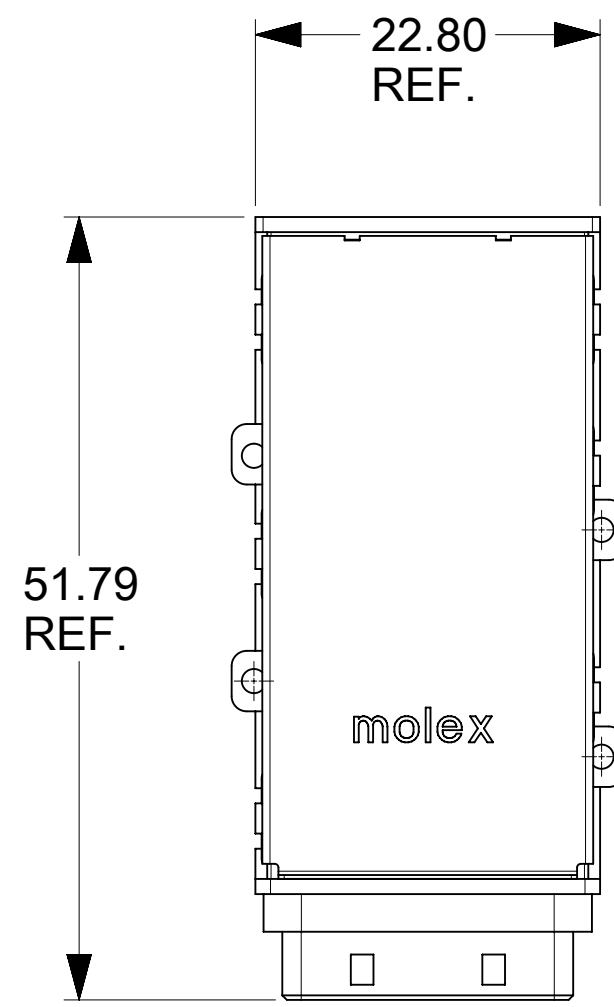
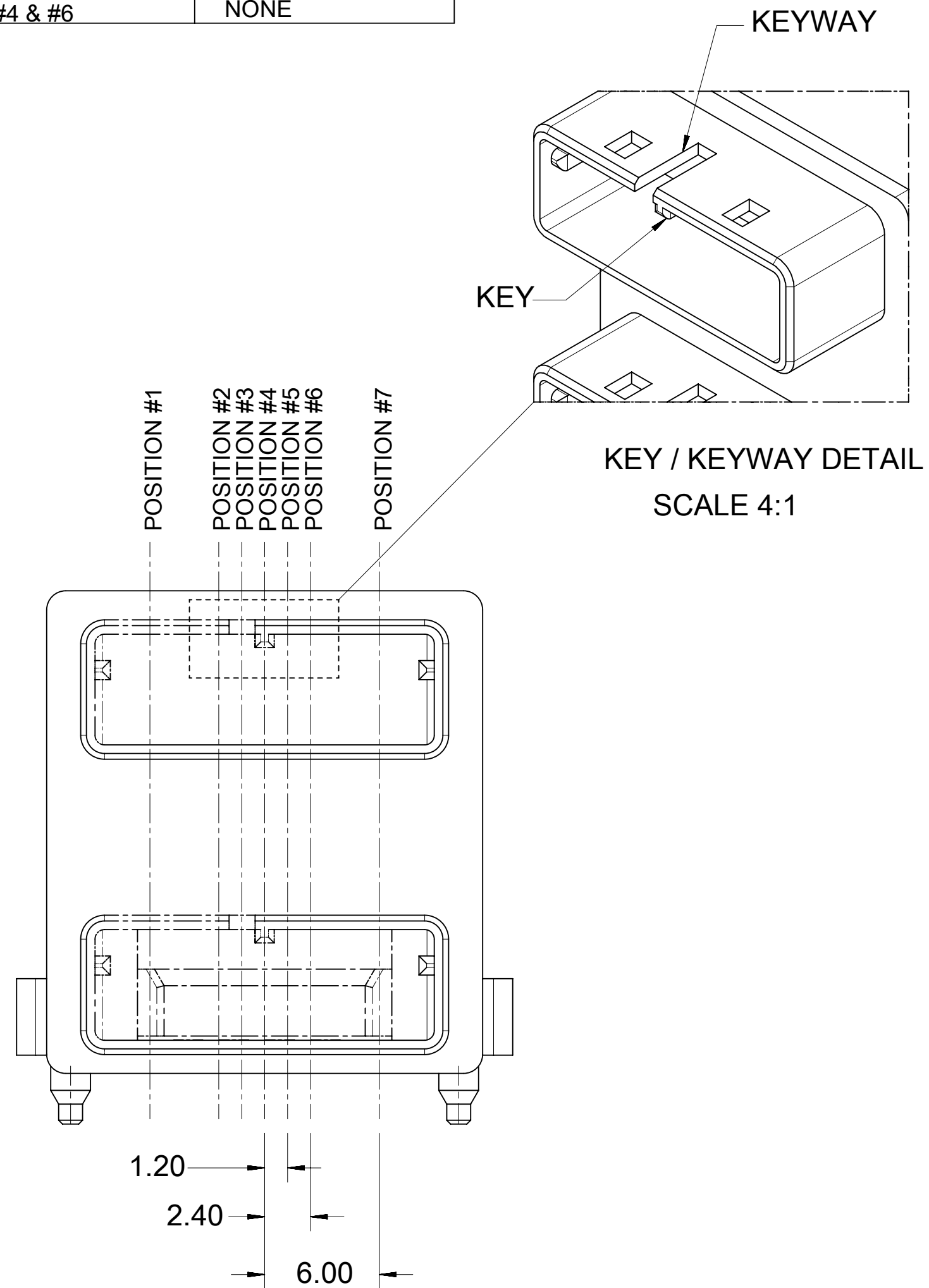
4 PLACES ± --- ± ---	DRAWN BY	DATE
3 PLACES ± --- ± ---	JJANTELEZ10	01/23/08
2 PLACES ± 0.25 ± ---	CHECKED BY	DATE
1 PLACE ± 0.25 ± ---	KLANG	01/23/08
ANGULAR ± 1/2°	APPROVED BY	DATE
	MBANAKIS	01/23/08
DRAFT WHERE APPLICABLE MUST REMAIN WITHIN DIMENSIONS	MATERIAL NO.	DOCUMENT NO.
	SEE SHEET 1	SD-75758-002

MOLEX INCORPORATED

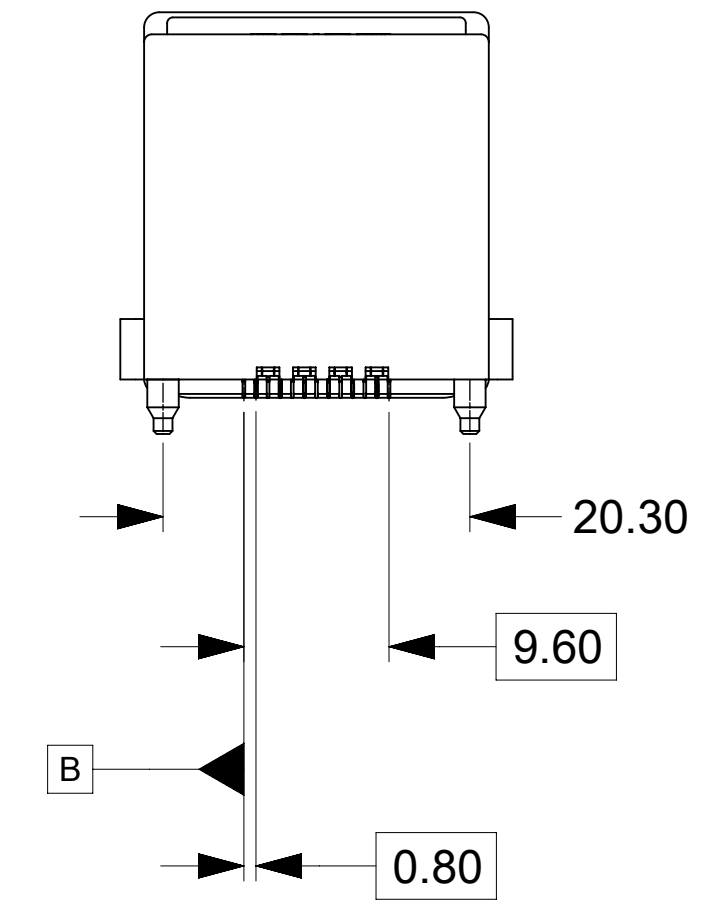
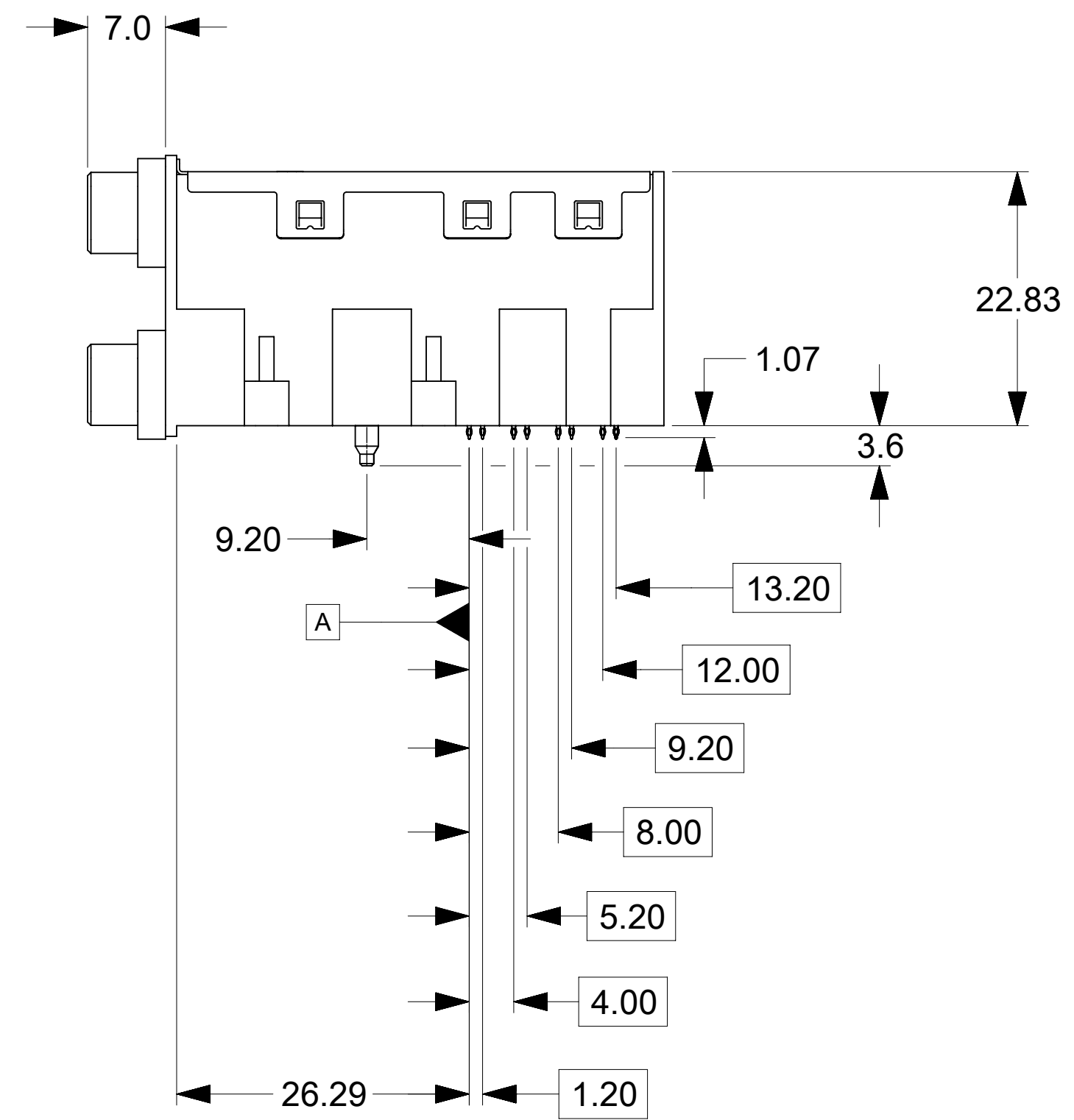
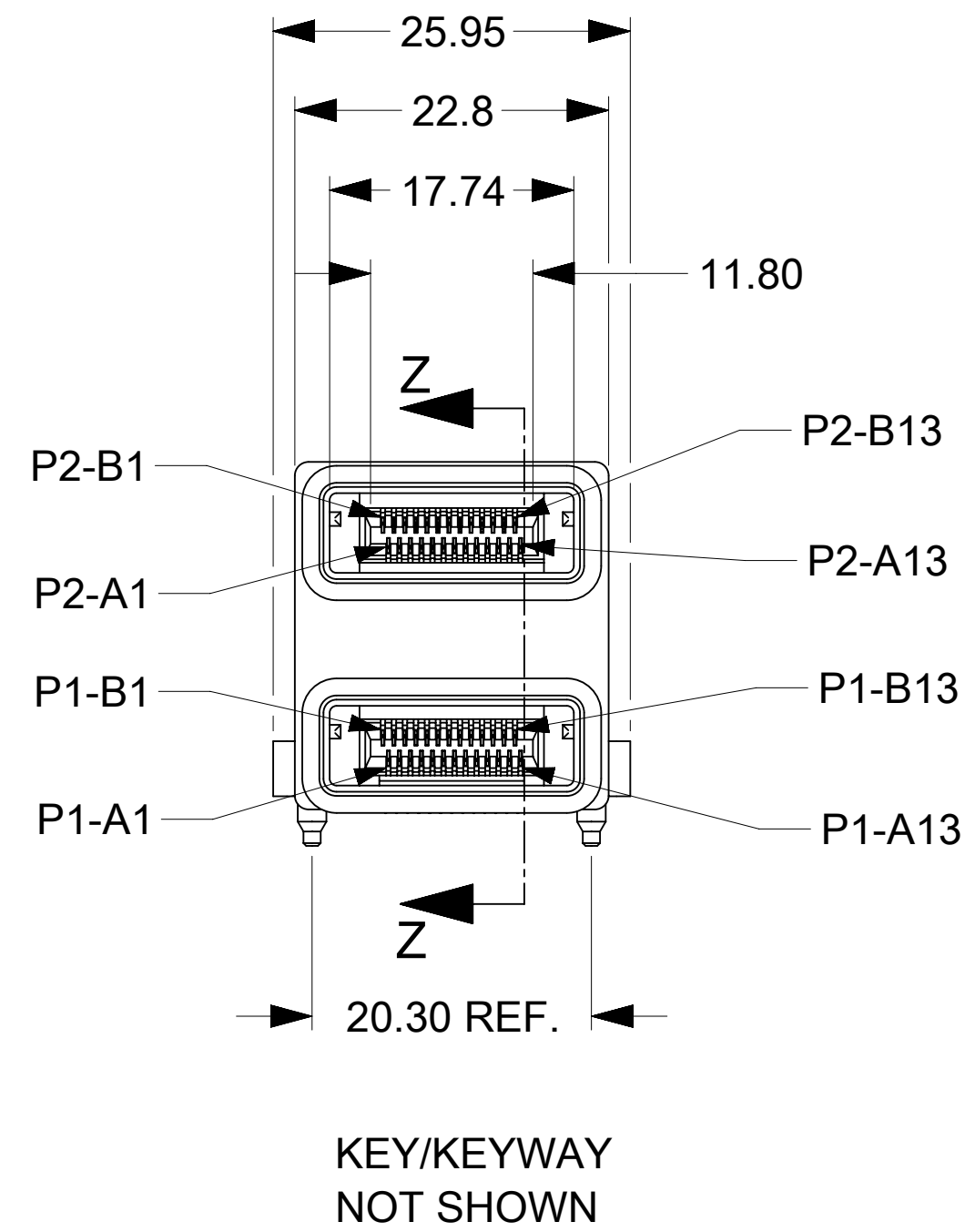
THIS DRAWING CONTAINS INFORMATION THAT IS PROPRIETARY TO MOLEX INCORPORATED AND SHOULD NOT BE USED WITHOUT WRITTEN PERMISSION

SHEET NO. 3 OF 3

KEYING & PLATING OPTIONS			
TIN/LEAD PART NUMBER	LEAD FREE PART NUMBER	KEY POSITION	KEYWAY POSITION
75758-0102	75758-0202	#3	NONE
75758-0103	75758-0203	#4	NONE
75758-0104	75758-0204	#4	#3 & #5
75758-0105	75758-0205	NONE	#3 & #5
75758-0106	75758-0206	#4	#3
75758-0107	75758-0207	NONE	#3
75758-0108	75758-0208	#4	#5
75758-0109	75758-0209	NONE	#5
75758-0111	75758-0211	#4 & #6	NONE



75758-0101 (OBSOLETE)
SHOWN FOR REF. ONLY



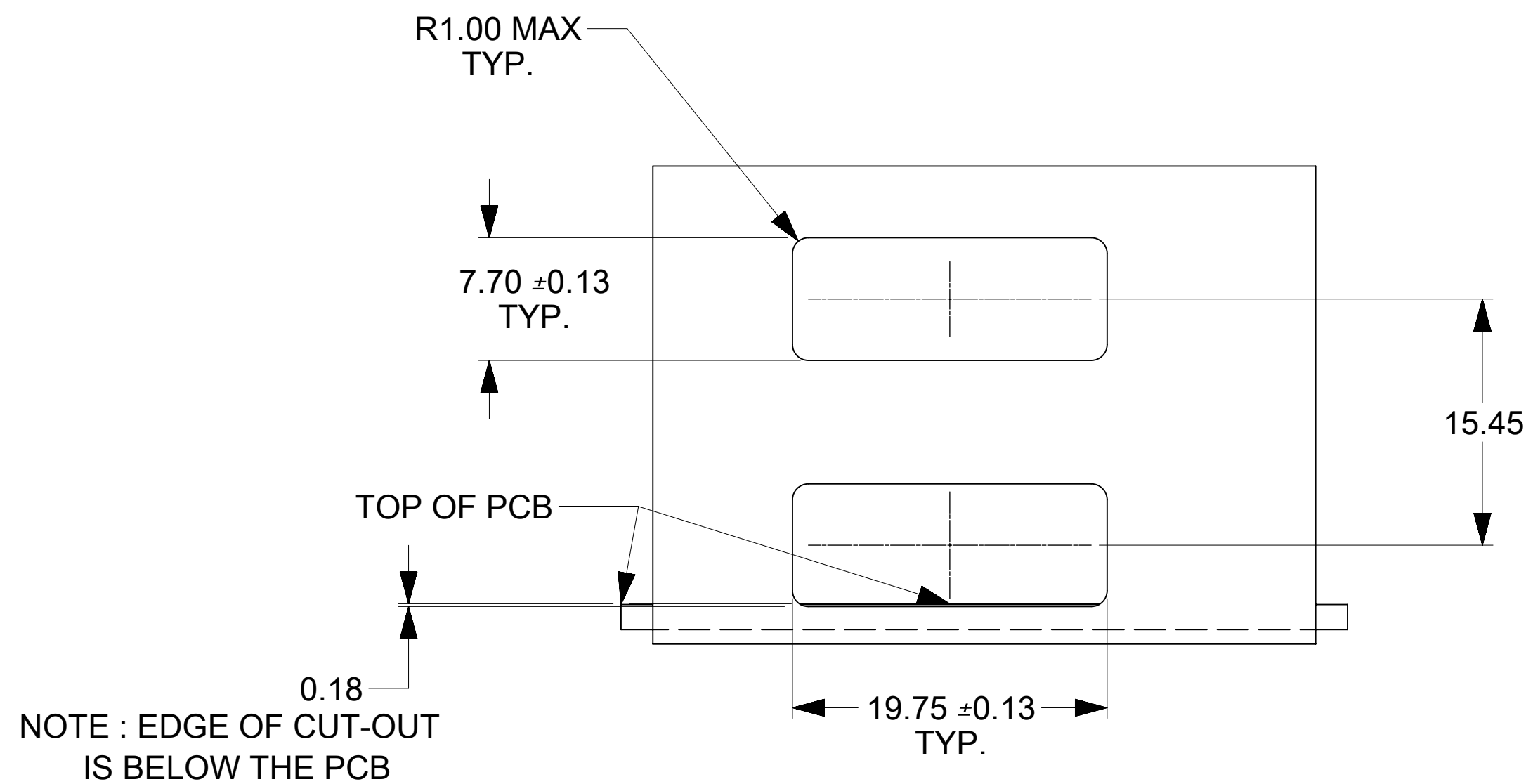
NOTES :

- MATERIALS :
CONNECTOR HOUSING - HIGH TEMP THERMOPLASTIC, GLASS-FILLED, UL94V-0, COLOR - BLACK
EMI HOUSING - DIE CAST ALLOY, FINISH: NICKEL
COVER - STAINLESS STEEL ALLOY
CPI TERMINALS - COPPER ALLOY
EMI GASKETS - CONDUCTIVE POLYMER
- TERMINAL PLATING : SEE CHART
OPTION 1) TIN/LEAD - CONTACT AREA - 0.7μ MIN GOLD OVER 2.5μ MIN NICKEL. COMPLIANT AREA - 0.7-1.5μm TIN/LEAD (90/10) OVER 1.2μm MIN NICKEL.

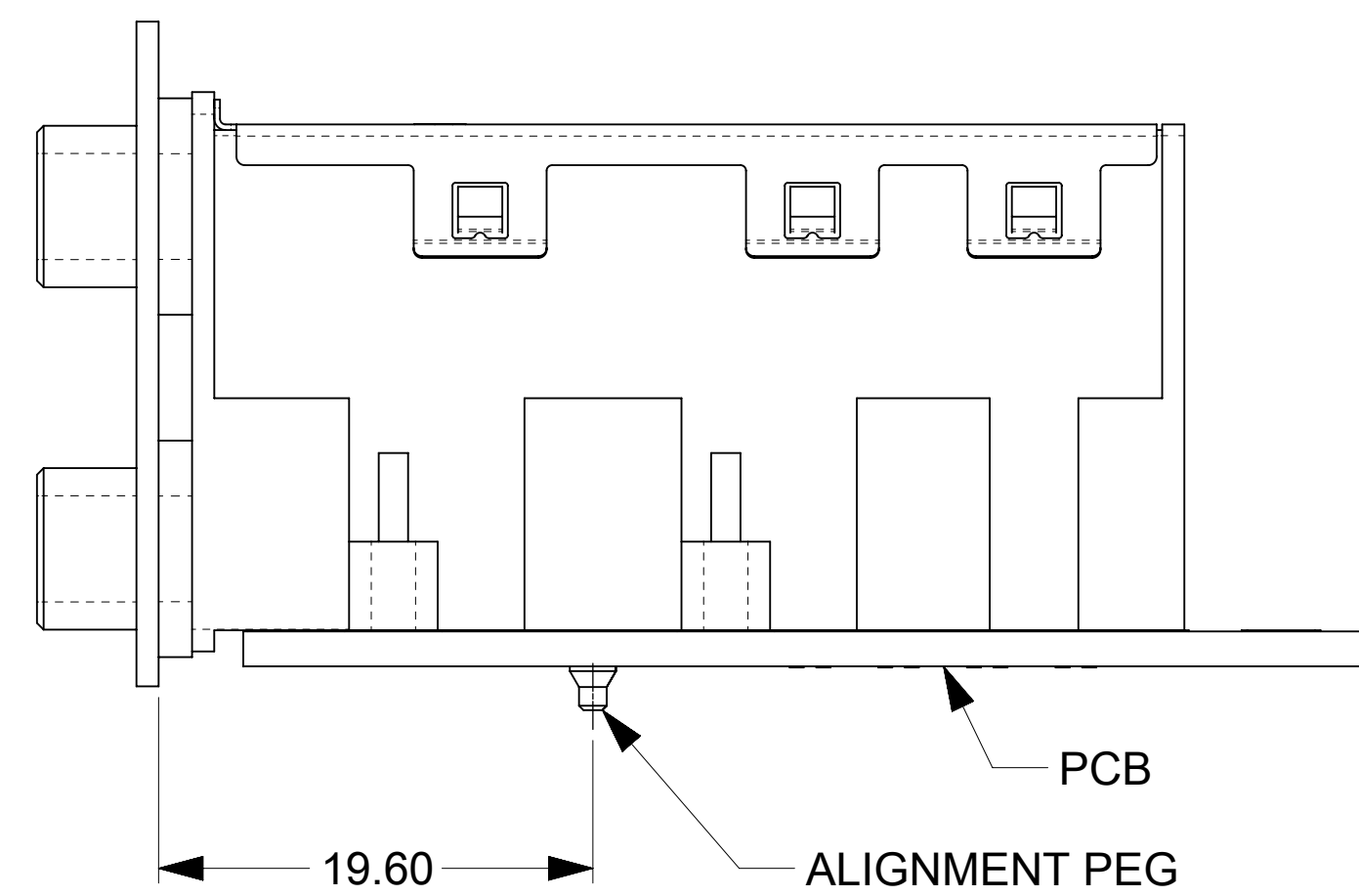
OPTION 2) LEAD FREE - CONTACT AREA - 0.7μ MIN GOLD OVER 2.5μ MIN NICKEL. COMPLIANT AREA - 0.7-1.5μm TIN (TIN ONLY) OVER 1.2μm MIN NICKEL.
- PACKAGING SPECIFICATION : TRAY PACK (TBD)
- REFER TO PS-75586-001 PRODUCT SPEC FOR ALL ELECTRICAL, MECHANICAL AND ENVIRONMENTAL SPECIFICATIONS.
- THIS CONNECTOR IS DESIGNED TO MATE WITH MOLEX CABLE SERIES 74548.
- REQUIRES MOUNTING HARDWARE : (4) M2 X 8MM CAP SCREWS OR EQUIV. MAX. TORQUE 2.3 in/lbs.
- PRODUCT IS RoHS COMPLIANT.

THIS DRAWING CONTAINS INFORMATION THAT IS PROPRIETARY TO MOLEX ELECTRONIC TECHNOLOGIES, LLC AND SHOULD NOT BE USED WITHOUT WRITTEN PERMISSION

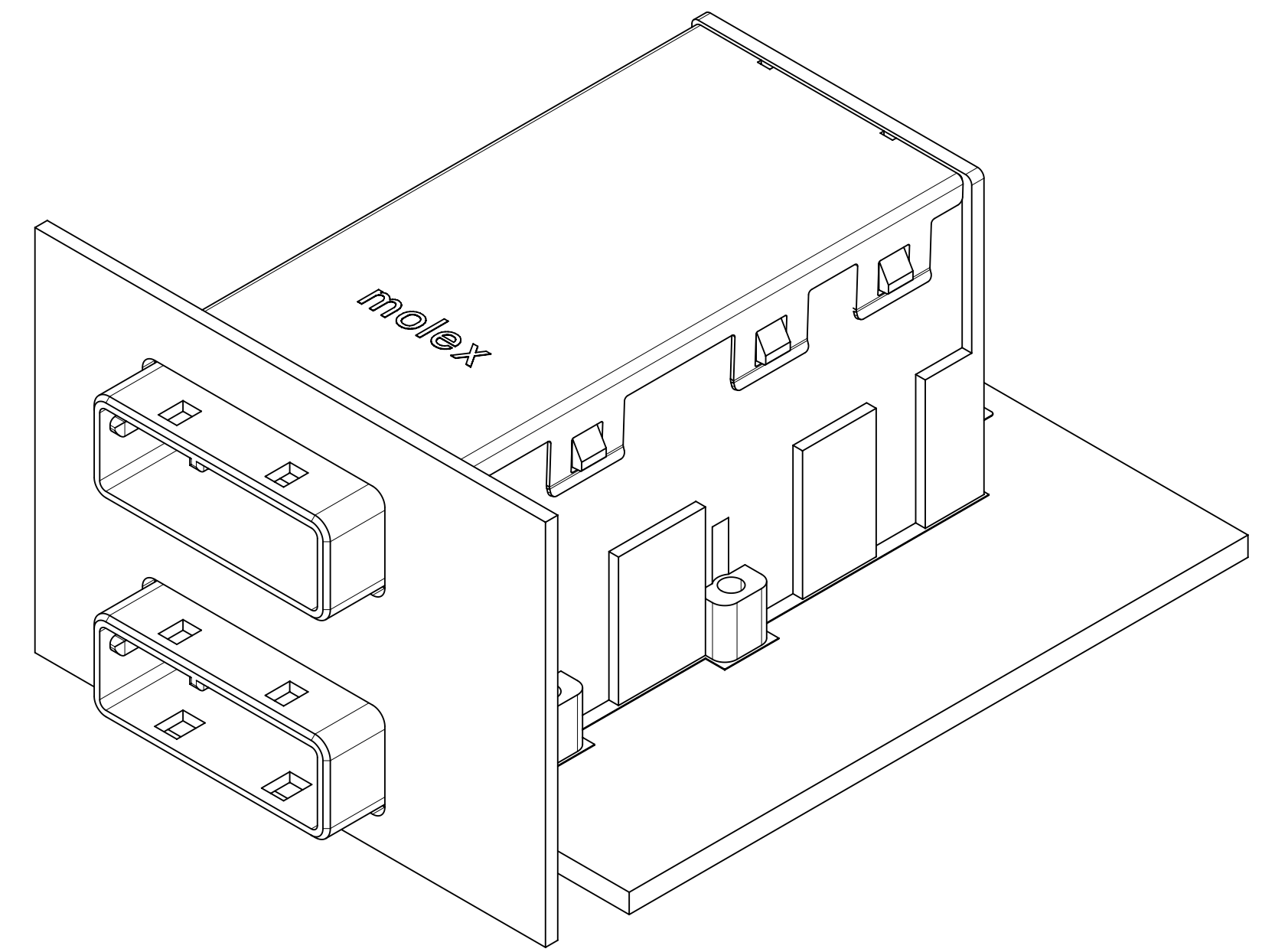
DIMENSION UNITS	SCALE	CURRENT REV DESC: OBSOLETE PART NO	
mm	2:1		
GENERAL TOLERANCES (UNLESS SPECIFIED)			
	MM	INCH	
4 PLACES	±	±	EC NO: 625872
3 PLACES	±	±	DRWN: VLOKESHA 2019/09/16
2 PLACES	± 0.25	±	CHK'D: GB 2019/11/08
1 PLACE	± 0.25	±	APPR: GGA 2019/11/12
0 PLACES	±	±	INITIAL REVISION:
ANGULAR TOL	± 0.5°		DRWN: JJANTELEZIO 2008/01/23
DRAFT WHERE APPLICABLE MUST REMAIN WITHIN DIMENSIONS		THIRD ANGLE PROJECTION	APPR: MBANAKIS 2008/01/23
		DRAWING	SERIES
		D-SIZE	75758
DOCUMENT STATUS		MATERIAL NUMBER	CUSTOMER
P1	RELEASE DATE 2019/11/12 07:19:27	SEE CHART	GENERAL MARKET
DOCUMENT NUMBER		DOC TYPE	DOC PART
SD-75758-010		PSD	001
REVISION		D1	
SHEET NUMBER		1 OF 3	


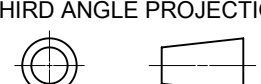


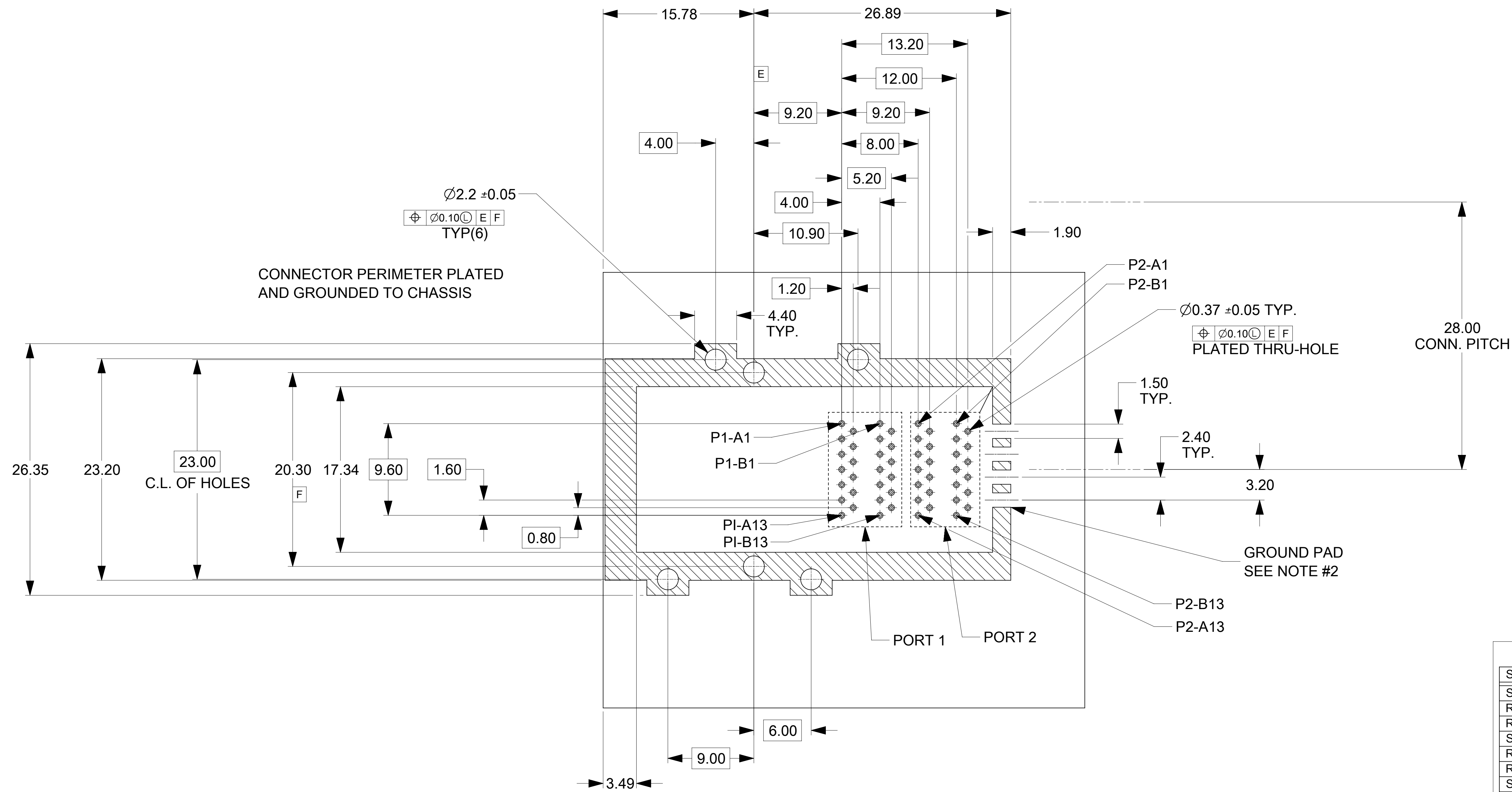
PANEL CUT-OUT
 MAXIMUM THICKNESS = 1.50
 (NOT SUPPLIED)



ASSEMBLY VIEW



THIS DRAWING CONTAINS INFORMATION THAT IS PROPRIETARY TO MOLEX ELECTRONIC TECHNOLOGIES, LLC AND SHOULD NOT BE USED WITHOUT WRITTEN PERMISSION																					
DIMENSION UNITS		SCALE		CURRENT REV DESC: OBSOLETE PART NO																	
mm		3:1		 IPASS STACKED 26/26 CIRCUIT CONNECTOR PRODUCT CUSTOMER DRAWING																	
GENERAL TOLERANCES (UNLESS SPECIFIED)												EC NO: 625872				2019/09/16					
		MM										INCH		DRWN: VLOKESHA				2019/11/08			
4 PLACES		±										±		CHK'D: GB				2019/11/12			
3 PLACES		±										±		APPR: GGA				2019/11/12			
2 PLACES		±										0.25		±		INITIAL REVISION:				2008/01/23	
1 PLACE		±		0.25		±		DRWN: JJANTELEZIO				2008/01/23									
0 PLACES		±		±		±		APPR: MBANAKIS				2008/01/23									
ANGULAR TOL				±		0.5 °		THIRD ANGLE PROJECTION				DRAWING									
DRAFT WHERE APPLICABLE MUST REMAIN WITHIN DIMENSIONS						D-SIZE		75758		SERIES		MATERIAL NUMBER		CUSTOMER		SHEET NUMBER					
										SEE CHART		GENERAL MARKET		2 OF 3							



RECOMMENDED PCB LAYOUT

THICKNESS = 1.35mm MIN.

PORT 1		PORT 2	
SIGNAL	SIGNAL PIN	SIGNAL	SIGNAL PIN
SIGNAL GND	A1	SIGNAL GND	B1
RX 0+	A2	TX 0+	B2
RX 0-	A3	TX 0-	B3
SIGNAL GND	A4	SIGNAL GND	B4
RX 1+	A5	TX 1+	B5
RX 1-	A6	TX 1-	B6
SIGNAL GND	A7	SIGNAL GND	B7
RX 2+	A8	TX 2+	B8
RX 2-	A9	TX 2-	B9
SIGNAL GND	A10	SIGNAL GND	B10
RX 3+	A11	TX 3+	B11
RX 3-	A12	TX 3-	B12
SIGNAL GND	A13	SIGNAL GND	B13

PIN ASSIGNMENT

NOTES:

- CROSS-HATCHED AREA MUST BE INCORPORATED IN THE FLAT ROCK PRESS-FIT TOOLING.
- RECOMMENDED LED'S INCLUDE THE FOLLOWING :
 DIALIGHT : 597-77x1-5xx SERIES
 CHICAGO MINIATURE : 7016 SERIES
 KINGBRIGHT : APBL3025 SERIES (BICOLOR)
 APL3015 SERIES (SINGLE COLOR)
- LED'S MUST HAVE A MAXIMUM HEIGHT OF 1.4mm AND A MINIMUM HEIGHT OF 0.7mm
- PLATE GROUND PAD WITH EMERSION SILVER OR GOLD.
- RECOMMENDED DRILL SIZE FOR 0.37Ø FINISHED PTH IS 0.457Ø (#77 DRILL)
- RECOMMENDED ANNULAR RING AROUND 0.37Ø FINISHED PTH IS 0.73Ø

THIS DRAWING CONTAINS INFORMATION THAT IS PROPRIETARY TO MOLEX ELECTRONIC TECHNOLOGIES, LLC AND SHOULD NOT BE USED WITHOUT WRITTEN PERMISSION

DIMENSION UNITS	SCALE	CURRENT REV DESC: OBSOLETE PART NO		molex
mm	4:1			
GENERAL TOLERANCES (UNLESS SPECIFIED)		EC NO: 625872	2019/09/16	IPASS STACKED 26/26 CIRCUIT CONNECTOR
4 PLACES ±		DRWN: VLOKESHA	2019/11/08	
3 PLACES ±		CHK'D: GB	2019/11/12	PRODUCT CUSTOMER DRAWING
2 PLACES ±	0.25 ±	APPR: GGA		
1 PLACE ±	0.25 ±	INITIAL REVISION:		DOCUMENT NUMBER SD-75758-010
0 PLACES ±		DRWN: JJANTELEZIO	2008/01/23	
ANGULAR TOL ±	0.5 °	APPR: MBANAKIS	2008/01/23	DOC TYPE PSD
DRAFT WHERE APPLICABLE MUST REMAIN WITHIN DIMENSIONS	THIRD ANGLE PROJECTION	DRAWING D-SIZE	SERIES 75758	DOC PART 001
		MATERIAL NUMBER SEE CHART	CUSTOMER GENERAL MARKET	REVISION D1
				SHEET NUMBER 3 OF 3