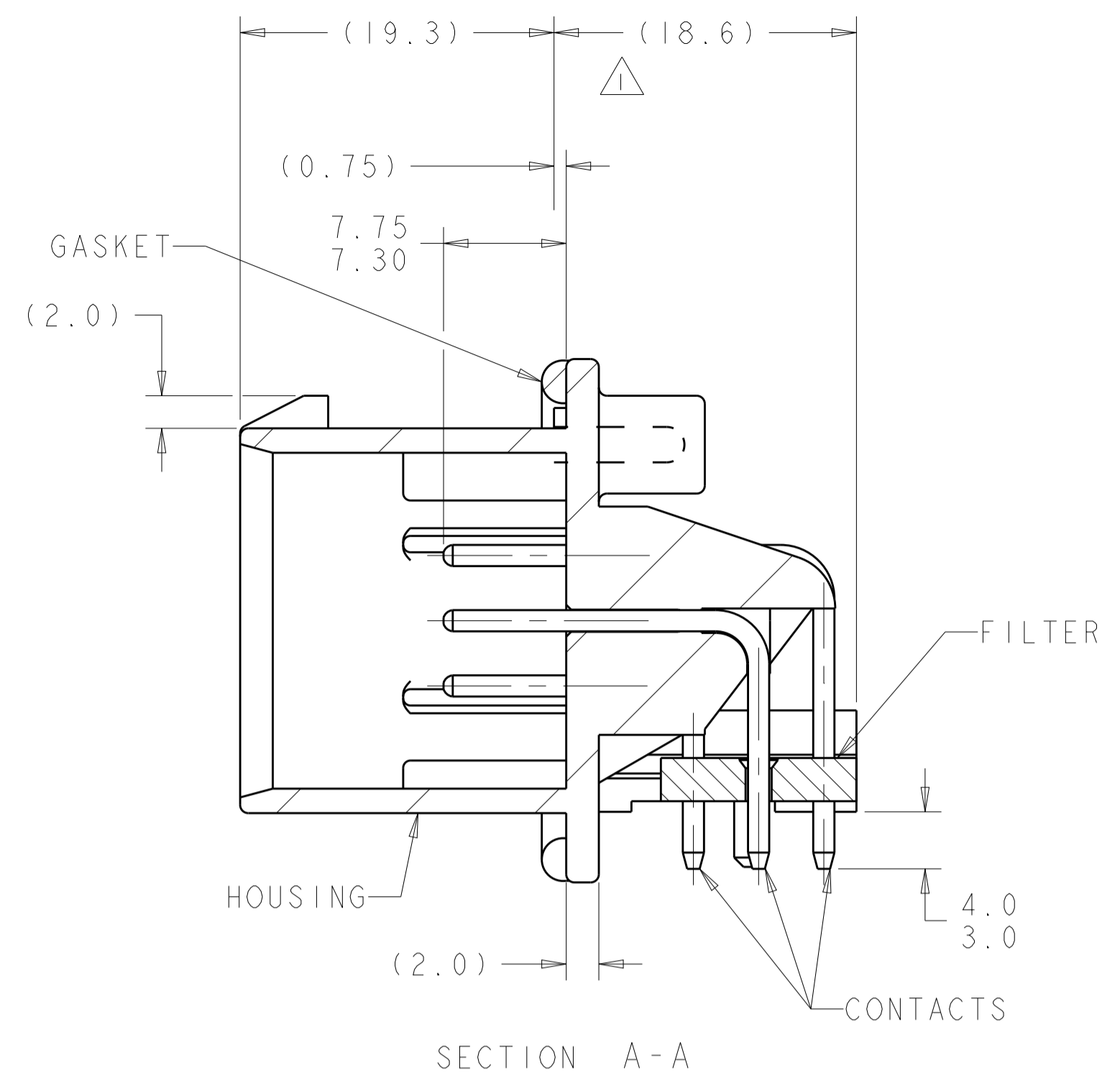
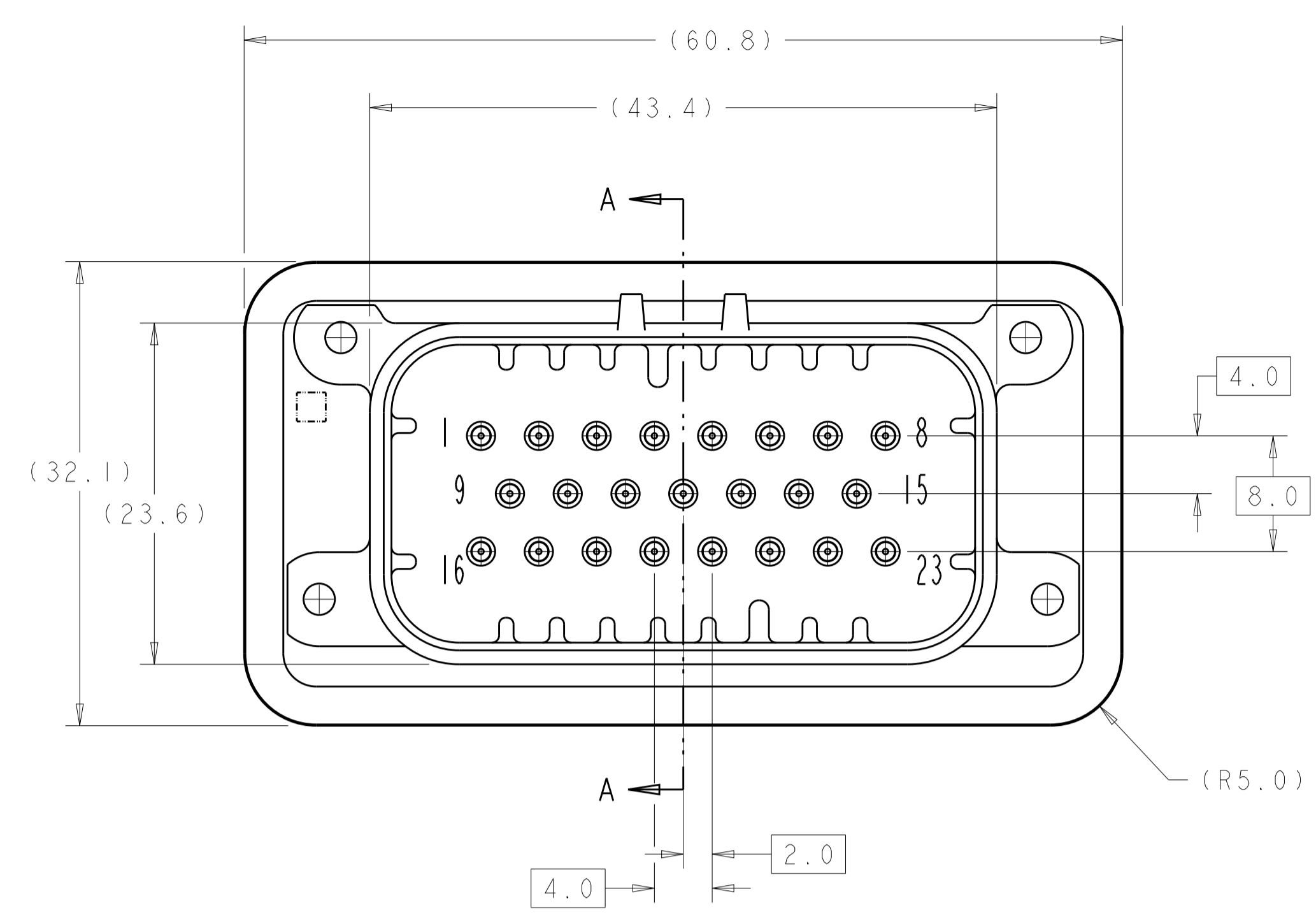
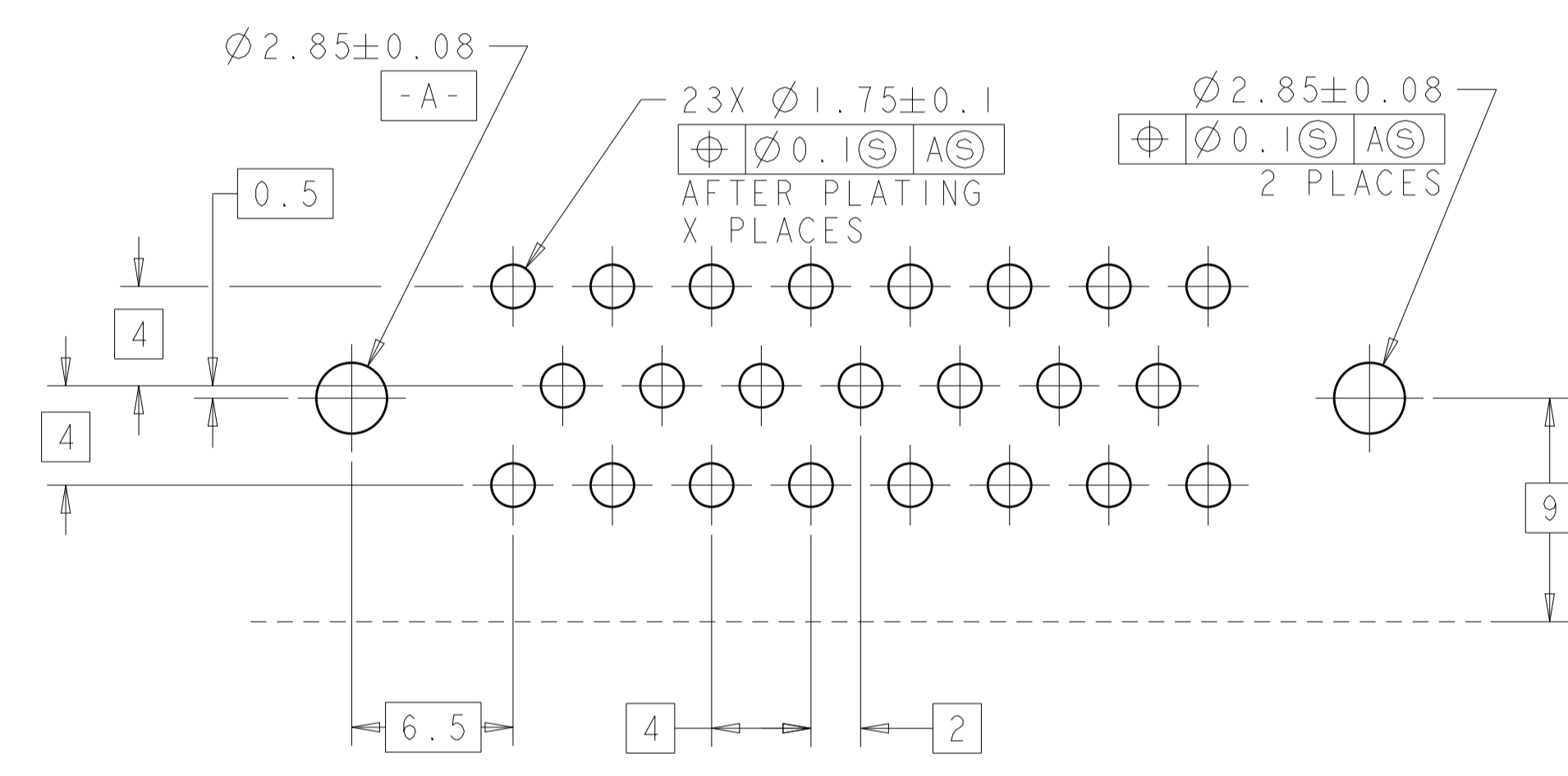
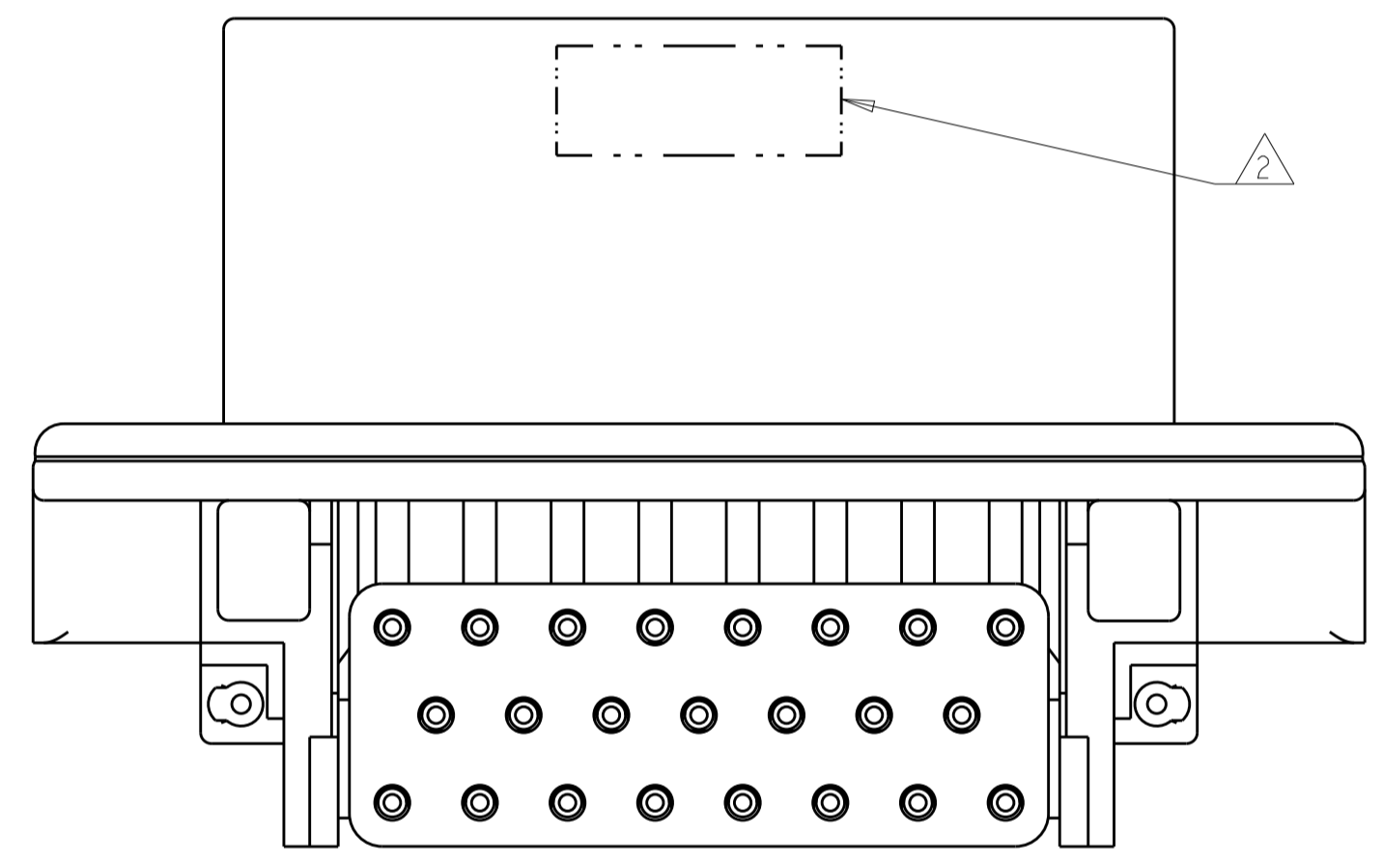


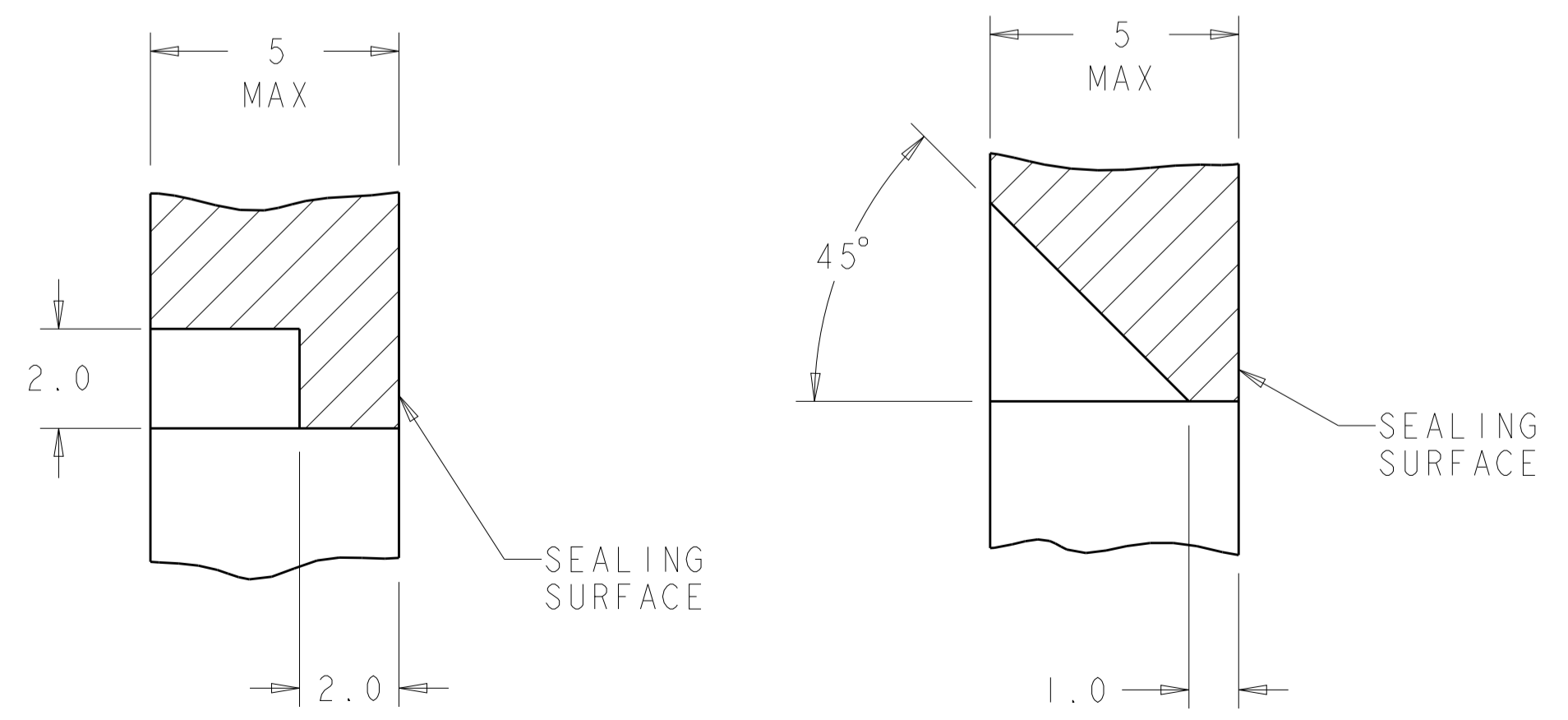
LOC	DIST	REVISIONS					
GE	00	P	LTN	DESCRIPTION	DATE	DWN	APVD
		B2		OBSOLETE ECO-19-002293	28FEB2019	DS	DS



- 1 ACCEPTS #4 SELF TAPPING THREAD FORMING SCREW OR METRIC EQUIVALENT TO BE DRIVEN AT 0.6±0.2 N-M MAX.
- 2 DATE CODE TO BE BRANDED IN THIS LOCATION PER TE SPEC 102-60. USE 5 DIGIT CODE: FIRST 2 DIGITS = YEAR, SECOND 2 DIGITS = WEEK, LAST DIGIT = DAY
- 3 HOUSING COLORS ARE MECHANICALLY KEYS TO MATE ONLY WITH IDENTICALLY COLORED PLUG ASSEMBLIES.
- 4 MATERIAL: HEADERHOUSING - 4/6 NYLON  
PINS - GOLD PLATED BRASS  
GASKET - SILICONE  
FILTER - PBT
- 5. HEADER MATES WITH PLUG ASSEMBLY 770680 WHICH USES REELED TERMINALS 770520 AND LOOSE PIECE TERMINALS 770854

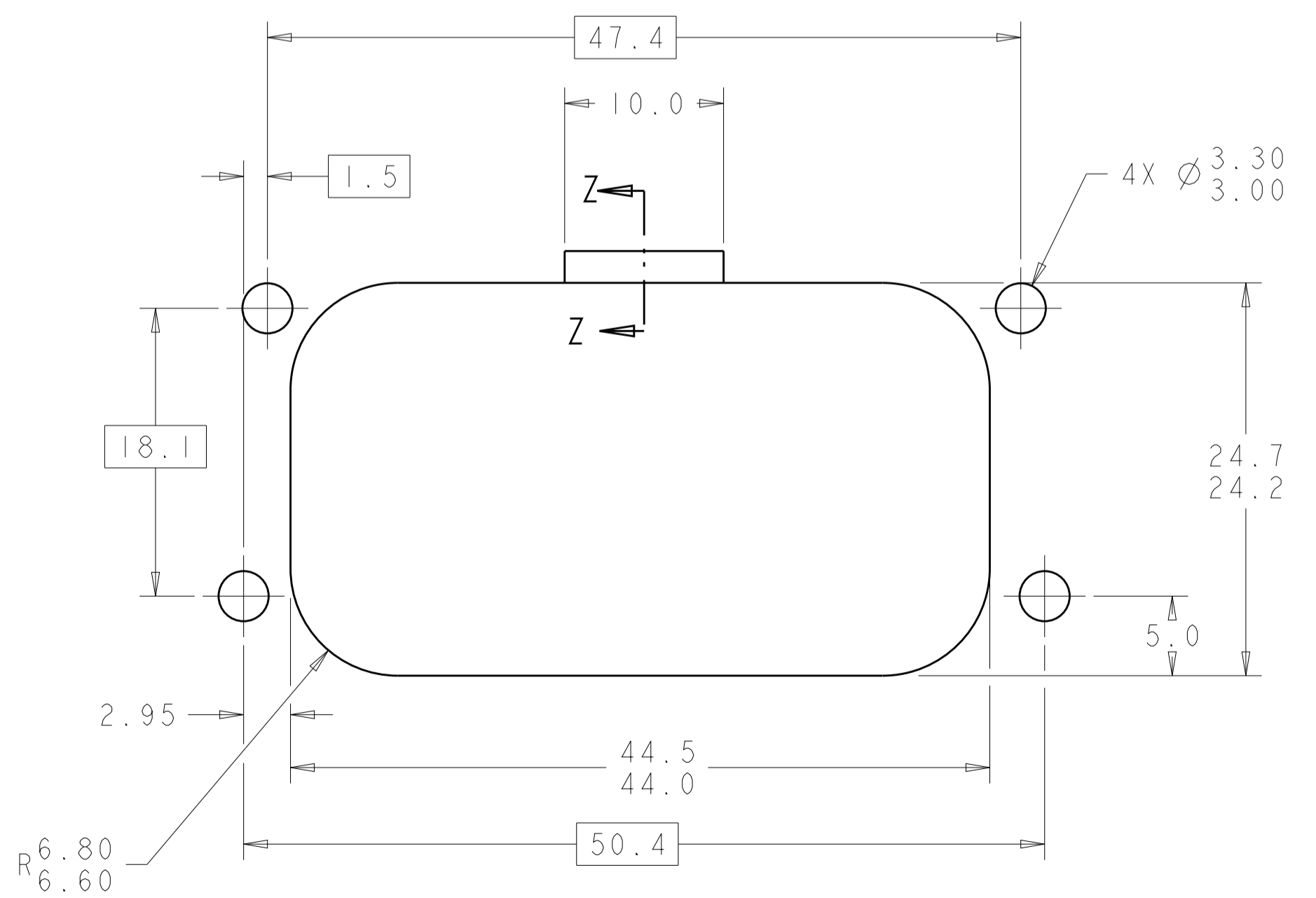


RECOMMENDED P.C. BOARD LAYOUT FOR 1.57 THICK P.C. BOARD



SECTION Z-Z OPTIONAL CONSTRUCTION IF THICKNESS IS GREATER THAN 2.0 SCALE 8:1

SECTION Z-Z OPTIONAL CONSTRUCTION IF THICKNESS IS GREATER THAN 2.0 SCALE 8:1



RECOMMENDED MOUNTING HOLE LAYOUT FOR 5.0 MAX THICK PANEL

**OBSOLETE**

DURAGOLD	NATURAL (WHITE)	1-776336-2
DURAGOLD	BLACK	1-776336-1
FINISH	COLOR	PART NUMBER

THIS DRAWING IS A CONTROLLED DOCUMENT.		DWN R. VESTAL 31DEC2002	TE Connectivity	
DIMENSIONS: mm		CHK D. CROWE 31DEC2002	NAME	
TOLERANCES UNLESS OTHERWISE SPECIFIED:		APVD D. CROWE 31DEC2002	PRODUCT SPEC	
0 PLC	±	PRODUCT SPEC	HEADER ASSEMBLY, 23 POSITION	
1 PLC	±0.3	APPLICATION SPEC	HIGH TEMPERATURE	
2 PLC	±0.13	108-1329	RIGHT ANGLE, AMPSEAL	
3 PLC	±	114-16016	SIZE	CAGE CODE DRAWING NO
4 PLC	±	WEIGHT	A1	00779
ANGLES	±	CUSTOMER DRAWING	SCALE	3:1
MATERIAL	FINISH	RESTRICTED TO	SHEET	1 OF 1
			REV	B2