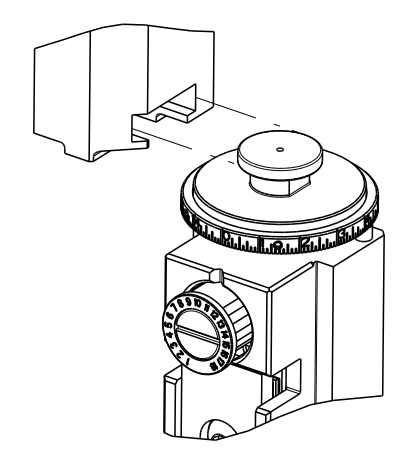


THIS DRAWING IS UNPUBLISHED. RELEASED FOR PUBLICATION 20  
 COPYRIGHT © BY TYCO ELECTRONICS CORPORATION. ALL RIGHTS RESERVED.

PART NUMBER	REVISION	DESCRIPTION	FEED TYPE
2151763-1	D	FINE CRIMP HEIGHT ADJUST	MECHANICAL
2151763-2	D	FINE CRIMP HEIGHT ADJUST	PNEUMATIC
7-2151763-1	D	MECHANICAL AND CRIMP TOOLING KIT	MECHANICAL
7-2151763-2	D	PNEUMATIC AND CRIMP TOOLING KIT	PNEUMATIC
7-2151763-7	A	CRIMP TOOLING KIT	-

ATLANTIC VERSION TERMINATOR INTERFACE ADAPTER



APPLICATOR DATA

CRIMP	SIZE	TYPE
WIRE	1.57 mm [.062]	F
INSUL	1.57 mm [.062]	O

APPLICATOR INSTRUCTIONS 408-35042

TERMINAL DATA: YAZAKI TERMINAL YAZAKI CRIMP SPECIFICATION

TERMINAL NAME: 0.64 SYSTEM CONNECTOR - MALE TERMINAL

WIRE STRIP LENGTH	INSULATION DIAMETER RANGE
3.75-3.77 mm [.148-.148 IN]	Ø1.40-2.20 mm [.055-.087 IN]

TERMINAL APPLICATION SPECIFICATION (A)WA1675 Rev 01

TERMINALS APPLIED

TE TERMINAL	YAZAKI TERMINAL	TE TERMINAL	YAZAKI TERMINAL
(A) 1949224-1	(A) 7114-4721-02		

TERMINAL DATA: YAZAKI TERMINAL YAZAKI CRIMP SPECIFICATION

TERMINAL NAME: 0.64 SYSTEM CONNECTOR - FEMALE TERMINAL

WIRE STRIP LENGTH	INSULATION DIAMETER RANGE
3.75-3.77 mm [.148-.148 IN]	Ø1.40-2.20 mm [.055-.087 IN]

TERMINAL APPLICATION SPECIFICATION (B)WA1742 Rev 07

TERMINALS APPLIED

TE TERMINAL	YAZAKI TERMINAL	TE TERMINAL	YAZAKI TERMINAL
(B) 1949220-1	(B) 7116-4721-02	(B) 1949220-2	(B) 7116-4721-08

WIRE SIZE	CRIMP HEIGHT mm [INCH]	CRIMP HEIGHT REFERENCE SETTING
0.85mm2	1.00+/-0.05 [.039+/- .002]	7.9
0.50mm2	0.85+/-0.05 [.033+/- .002]	9.5

WIRE SIZE	CRIMP HEIGHT mm [INCH]	CRIMP HEIGHT REFERENCE SETTING
0.85mm2	1.20+/-0.05 [.047+/- .002]	3.0
0.75mm2	1.07+/-0.05 [.042+/- .002]	4.3
0.50mm2	1.05+/-0.05 [.041+/- .002]	4.5

- RECOMMENDED SPARE PARTS
- REFER TO SUPPLIED INSTRUCTION SHEET FOR CLEANING, LUBRICATION AND STORAGE OF APPLICATOR.
- APPLY PART NUMBER 2-23419-6 LOCTITE TO THREADS OF ITEM 242.
- CRIMP HEIGHT REFERENCE SETTING WAS THE SETTING USED WHEN THE APPLICATOR WAS QUALIFIED AT THE FACTORY. ADJUSTMENT MAY BE NECESSARY WHEN RUNNING APPLICATOR IN THE FIELD.
- UNLESS SPECIFIED OTHERWISE TORQUE VALUES SHALL BE USED PER DOCUMENT, 101-35000.
- TERMINAL LUBRICANT IS RECOMMENDED.
- THE CUSTOMER ACKNOWLEDGES THAT THE TERMINAL MANUFACTURER'S CRIMP SPECIFICATIONS ARE UNKNOWN. IN ADDITION THE CUSTOMER ACKNOWLEDGES THAT TE CONNECTIVITY HAS CALCULATED CRIMP SPECIFICATIONS FOR THIS PRODUCT THAT MAY NOT MATCH THE TERMINAL MANUFACTURER'S SPECIFICATIONS. TE CONNECTIVITY USES ACCEPTED PRACTICES TO DESIGN TERMINATION TOOLING FOR NON-TE CONNECTIVITY PRODUCTS. HOWEVER, **TE CONNECTIVITY EXPRESSLY DISCLAIMS ANY AND ALL WARRANTIES THAT THE TOOLING WILL RELIABLY APPLY NON-TE CONNECTIVITY PRODUCTS, INCLUDING BUT NOT LIMITED TO IMPLIED WARRANTIES OF MERCHANTABILITY OR FITNESS FOR PARTICULAR PURPOSE. THE CUSTOMER ASSUMES ALL RESPONSIBILITY AND LIABILITY FOR THE PERFORMANCE OF TERMINATED ASSEMBLIES USING SUCH TOOLING.** THE CUSTOMER EXPRESSLY INDEMNIFIES TE CONNECTIVITY AND SHALL HOLD TE CONNECTIVITY HARMLESS FROM ALL CLAIMS, DEMANDS, LOSSES, EXPENSES AND LIABILITIES RESULTING FROM THE USE OF THIS TOOLING ON NON-TE CONNECTIVITY PRODUCTS.

**\*WARNING**  
 ON INSTALLATION, SET WIRE DISC TO CRIMP HEIGHT REFERENCE SETTING FOR LARGEST WIRE SIZE. CRIMP HEIGHT REFERENCE SETTINGS GREATER THAN THE VALUE SHOWN MAY CAUSE DAMAGE TO THE CRIMP TOOLING, REFER TO THE INSTRUCTION SHEET FOR PROPER SETUP AND ADJUSTMENTS.

ATLANTIC VERSION  
 Shown on sheets 1 of 4 & 2 of 4  
 (Pacific version shown on sheets 3 of 4 & 4 of 4)

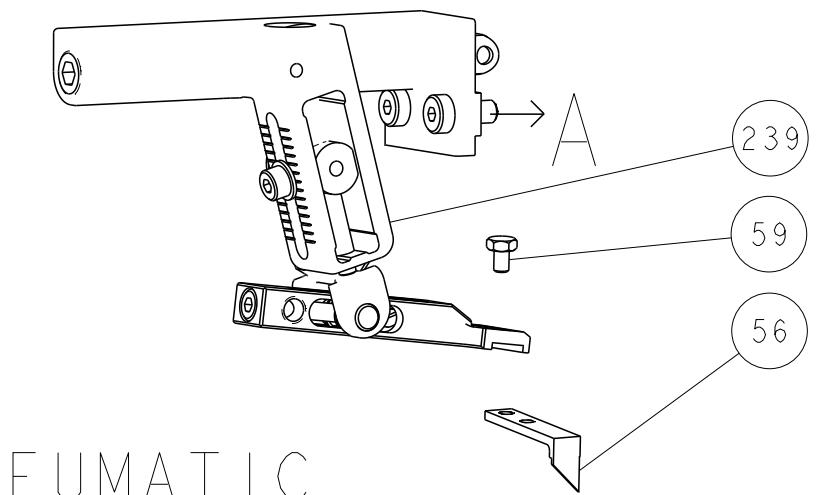
LOC	DIST	REV	DATE	BY	CHKD	APVD
A	66	C	200CT2020	JAH		RK
		D	14MAY2021	FZ		RK
		D1	15JUL2021	FZ		RK
			29JAN2022	FZ		RK

QTY	UNIT	DESCRIPTION	DATE	BY	CHKD	APVD
-	1	2119641-1	FEED CAM, AIR FEED			248
-	1	2119082-8	CAM, SNAIL, INSULATION ADJUSTMENT			244
-	1	2079764-1	WASHER, WAVE SPRING, CREST-TO-CREST			243
-	1	2119083-1	RETAINER, INSULATION DIAL			242
-	1	7-18023-7	SCR, SKT HD CAP M3 X 4.0			241
-	1	2119580-1	MECHANICAL FEED ASSEMBLY			239
-	1	2844940-1	AIR FEED MODULE			238
-	REF	994970-2	COUNTER, MAGNETIC			164
-	1	2119955-1	ASSY, LUBRICATOR, SIDE FEED			113
-	1	2844908-1	SCREW, LOCKING			99
-	1	2844907-1	POST, LOCKING			98
-	1	455888-5	SPACER, CRIMPER			82
-	1	5-547505-2	SPRING, COMPRESSION			77
-	1	854769-4	HOLDER, INS			74
-	1	1803607-3	DOCUMENTATION PACKAGE			71
-	1	2119740-1	TAG, IDENTIFICATION			67
-	2	2168078-1	SCREW, DRIVE, RH, RoHS, 2 x .188			66
-	1	2168083-2	SCR, SKT HD CAP, RoHS, M4 X 8.0			60
-	1	5-18022-5	SCR, HEX HD CAP, M4 X 6.0			59
-	1	21028-2	PIN, SLOTTED SPRING .062 X .250			58
-	1	1338685-1	PAWL, FEED			56
-	4	2168083-3	SCR, SKT HD CAP, RoHS, M4 X 12.0			54
-	2	1-2168083-0	SCR, SKT HD CAP, RoHS, M4 X 10			53
-	1	1803382-6	HOLD DOWN, SPRING LOADED			50
-	1	18023-9	SCR, SKT HD CAP M4 X 6.0			49
-	1	2119652-1	FEED CAM, PRE FEED			48
-	1	2119653-1	FEED CAM, POST FEED			47
-	1	1803583-9	APPLICATOR BASIC ASSEMBLY, SF			46
-	1	1803515-1	RAM ASSEMBLY, SF ATLANTIC			44
-	1	1803602-1	SCR, BHSC, RoHS (M8 X 25)			41
-	1	1752356-3	SUPPORT, TERMINAL			34
-	2	2079383-5	SCR, BHSC, RoHS (M4 X 20)			33
-	2	2-2844962-4	SPACER, CYLINDRICAL, STRIP GUIDE			30
-	1	2844992-2	ASSEMBLY, STRIP GUIDE			29
-	1	1-455888-0	SPACER, CRIMPER			28
-	1	240792-1	DRAG, TERMINAL			25
-	1	1320928-6	STRIP GUIDE			24
-	1	2168083-2	SCR, SKT HD CAP, RoHS, M4 X 8.0			21
-	2	1-18028-2	WASHER, FLAT, REG M4			20
-	1	2119533-1	STRIPPER, SIDE FEED			19
-	1	2119806-1	INSERT, SHEAR			13
-	1	3-22280-3	SPRING, COMPRESSION			12
-	1	1-356885-4	STOP, SHEAR			11
-	1	2119805-1	SHEAR HOLDER, FRONT			10
-	1	1803095-1	FLOATING SHEAR, FRONT			9
-	1	1-1633932-5	ANVIL, COMBINATION			8
-	-	-	-			7
-	-	-	-			6
-	1	2119780-2	DEPRESSOR, SHEAR			5
-	1	3-238011-1	BLOCK, CRIMPER SPACER			4
-	1	1-1803019-3	CRIMPER, INSULATION O			3
-	-	-	-			2
-	1	5-456403-6	CRIMPER, WIRE PREMIUM			1
-	77	-72-71	-2 -1	PART NO		ITEM NO

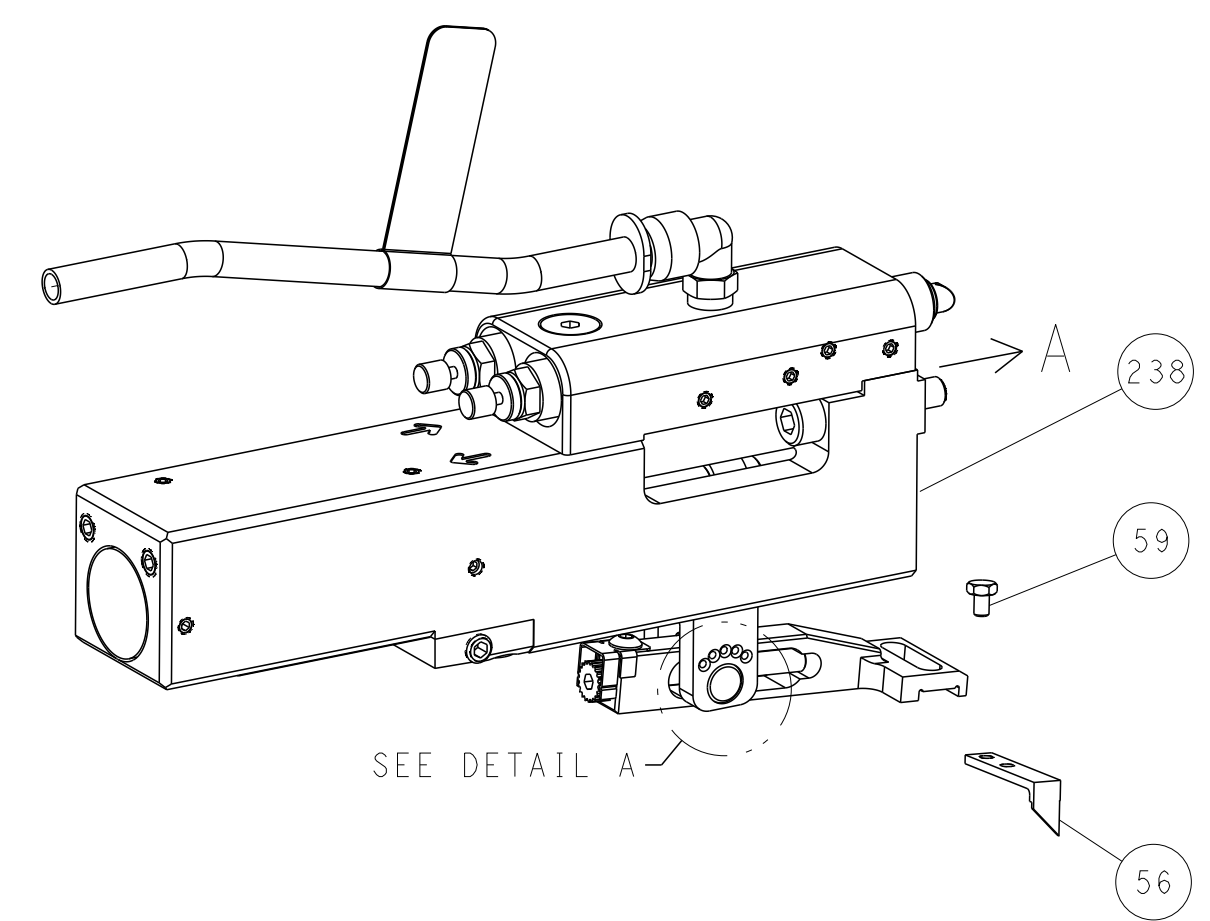
TE CONNECTIVITY Harrisburg, PA 17105-3608	DATE: 04OCT2012	REV: 04OCT2012	BY: T.ELBIN	CHKD: M.CLIFFORD	APVD: 04OCT2012
NAME: Ocean Side Feed Applicator	SIZE: A1	CAGE CODE: 00779	DRAWING NO: C=2151763	RESTRICTED TO: -	SCALE: 1:2
Customer Accessible Production Drawing			SHEET 1 OF 4	REV D1	

LOC	DIST	REVISIONS					
		P	LTN	DESCRIPTION	DATE	DWN	APVD
A	66	-	-	SEE SHEET 1	-	-	-

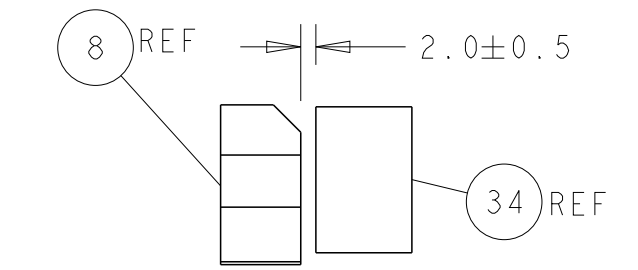
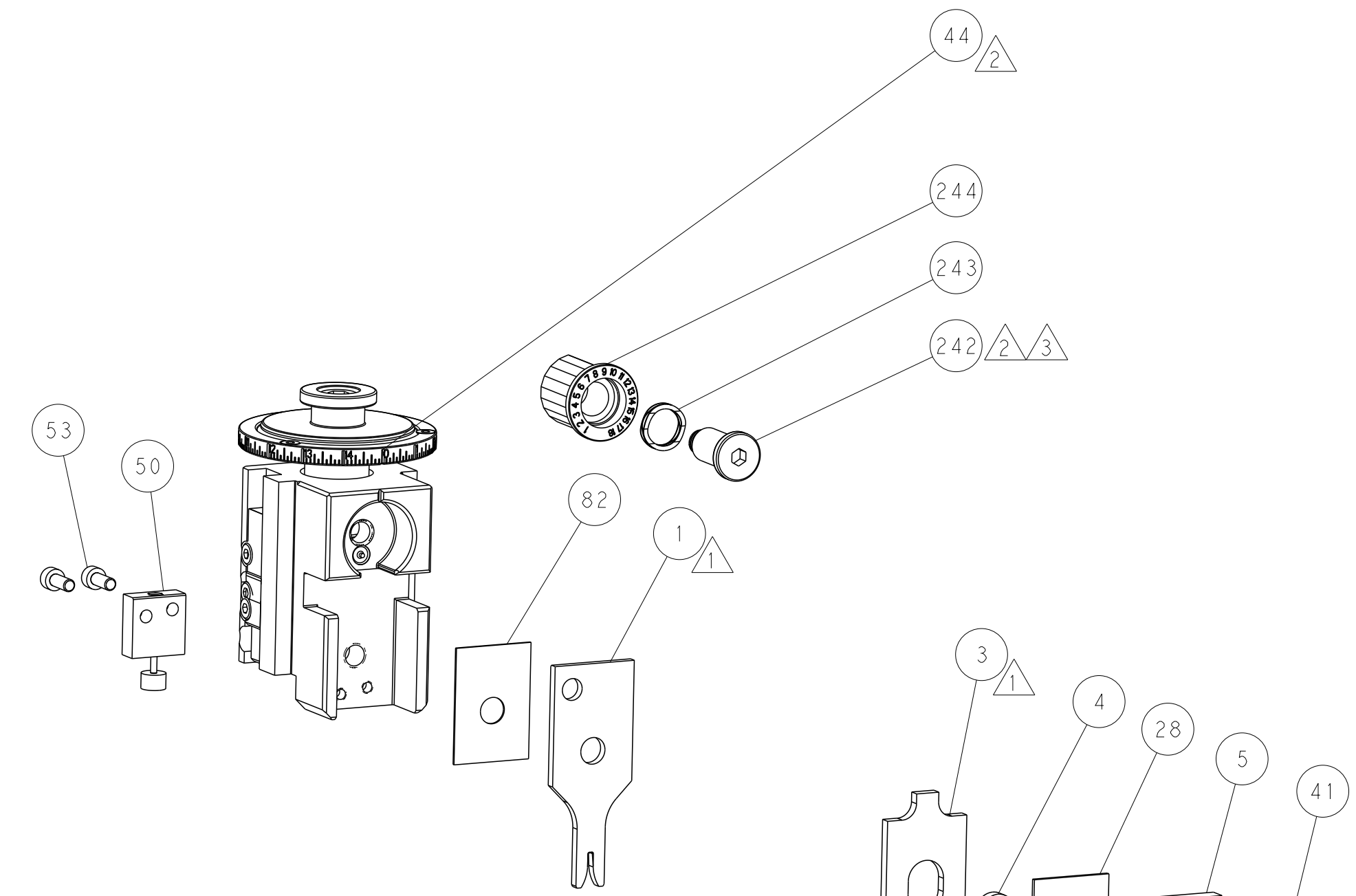
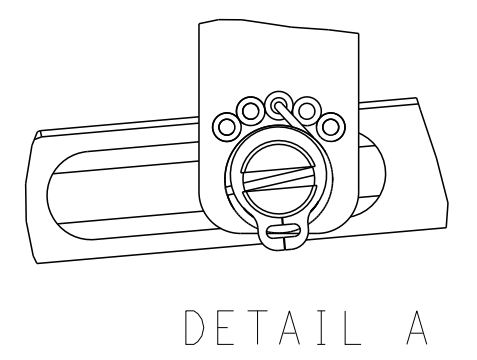
# FEED TYPE MECHANICAL



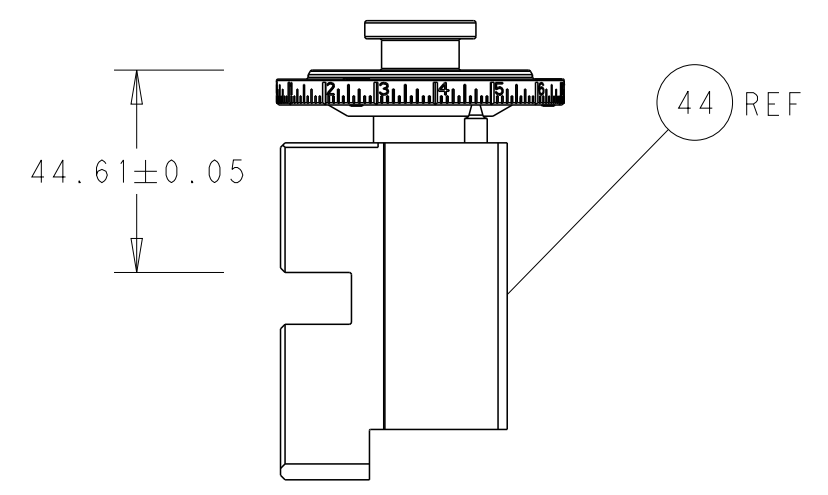
## PNEUMATIC



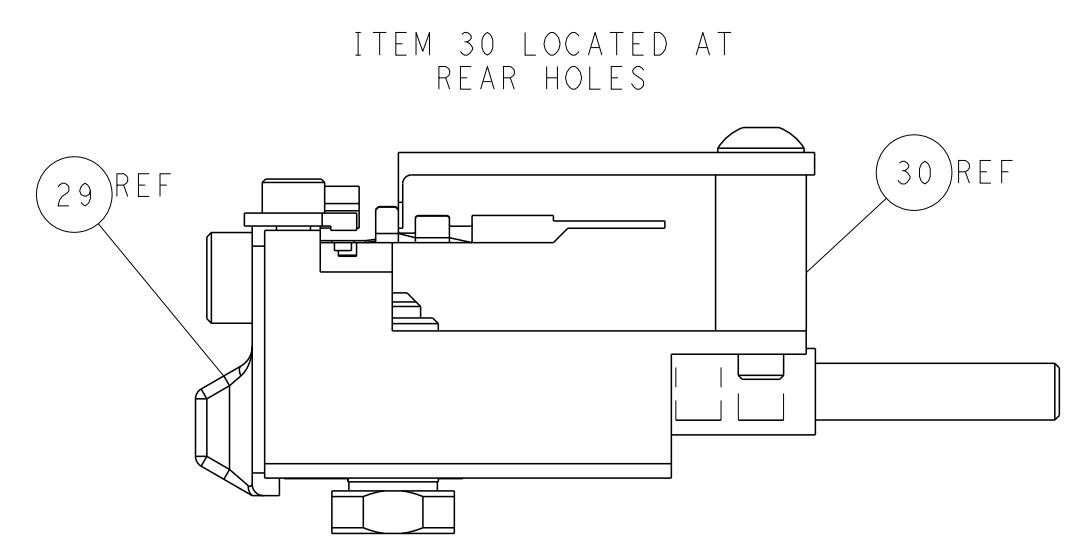
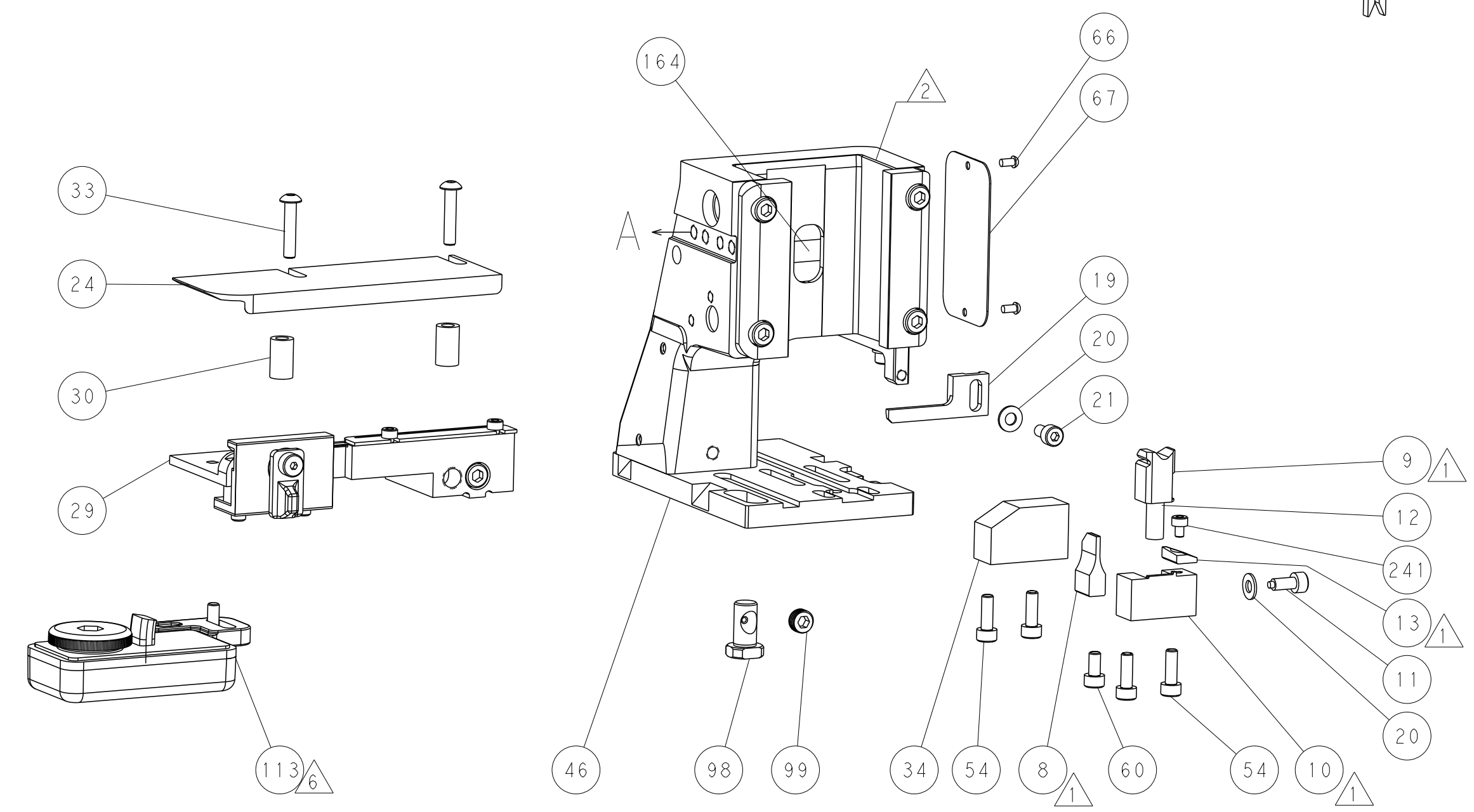
## FEED SPRING SETTING POSITION (SHOWN FROM REAR SIDE)



TERMINAL SUPPORT LOCATION

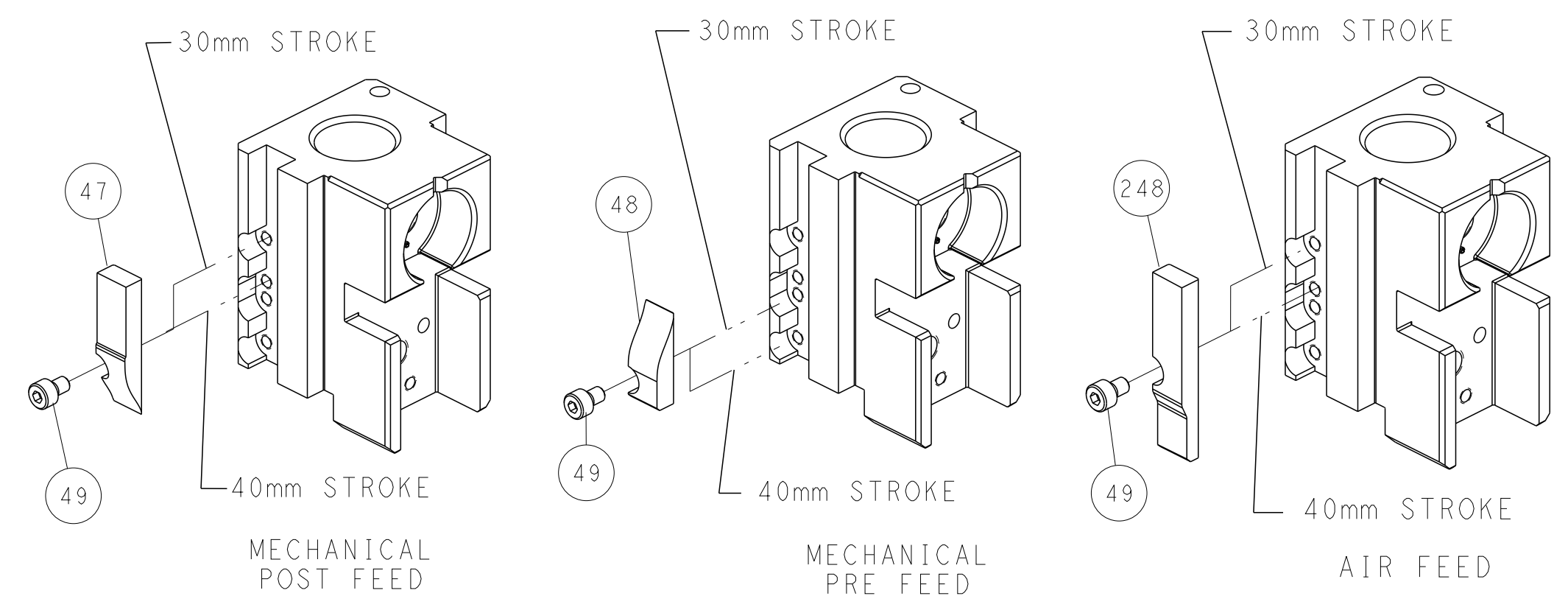


RAM SET-UP



FEED TRACK POSITION GUIDE BY INSULATION BARREL

# CAM POSITIONS



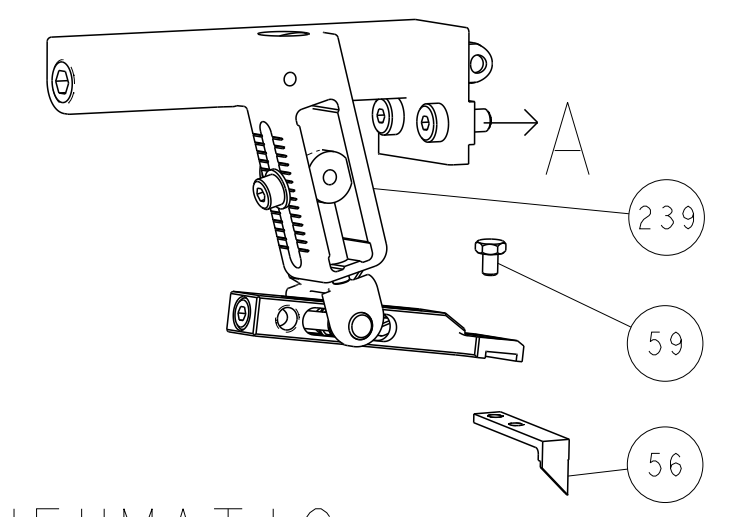
**ATLANTIC VERSION**  
 Shown on sheets 1 of 4 & 2 of 4  
 (Pacific version shown on sheets 3 of 4 & 4 of 4)

DIMENSIONS: mm 		TOLERANCES UNLESS OTHERWISE SPECIFIED: 0 PLC ± 1 PLC ± 2 PLC ± 3 PLC ± 4 PLC ± ANGLES ± FINISH ±		DWN 04OCT2012 L. GROSS 04OCT2012 CHS T. ELBIN APVD M. CLIFFORD PRODUCT SPEC APPLICATION SPEC WEIGHT Customer Accessible Production Drawing		NAME Ocean Side Feed Applicator SIZE CAGE CODE DRAWING NO A1 00779 C=2151763 SCALE 1:2 SHEET 2 OF 4 REV D1		TE Connectivity Harrisburg, PA 17105-3608	
-----------------------	--	-----------------------------------------------------------------------------------------------------------------------	--	-----------------------------------------------------------------------------------------------------------------------------------------------------------------	--	---------------------------------------------------------------------------------------------------------------------	--	----------------------------------------------	--

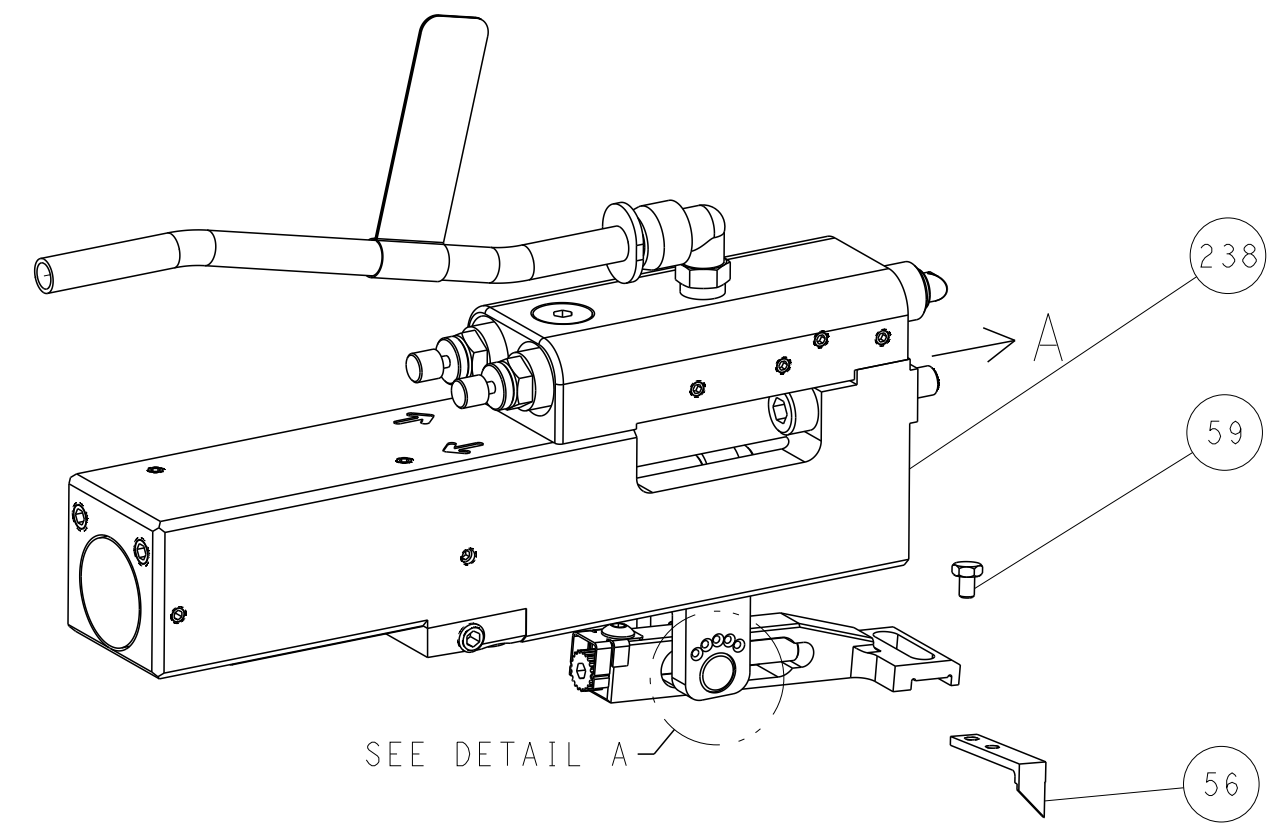


LOC	DIST	REVISIONS					
A	66	P	LTN	DESCRIPTION	DATE	DWN	APVD
		-		SEE SHEET 1	-	-	-

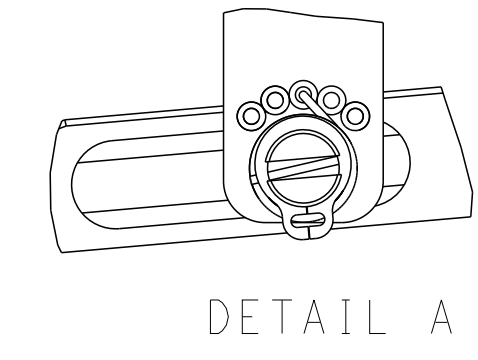
# FEED TYPE MECHANICAL



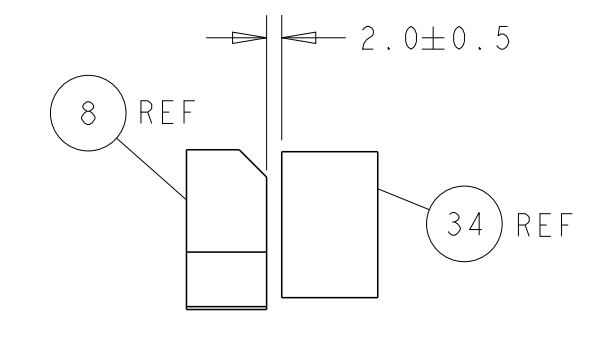
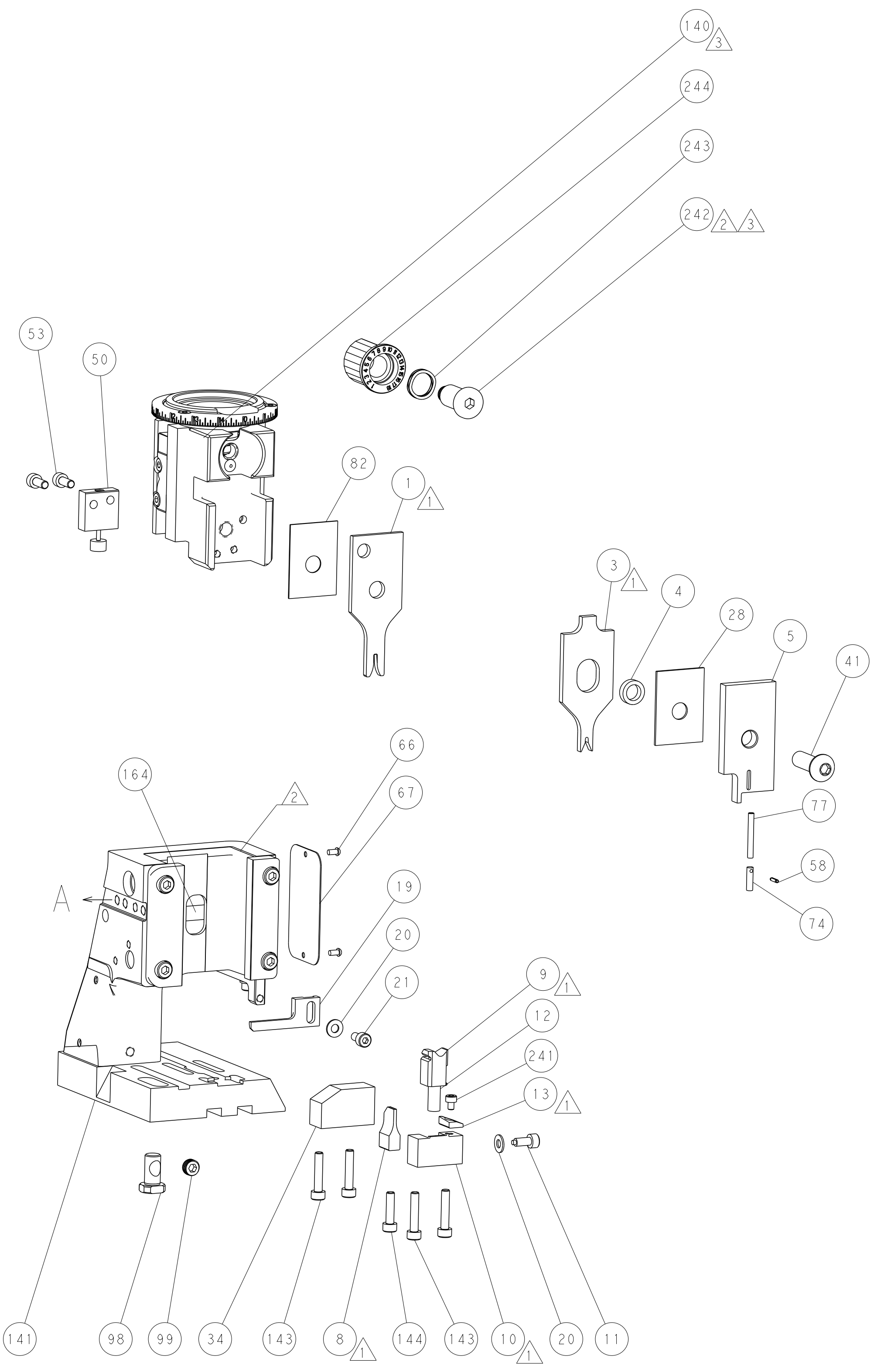
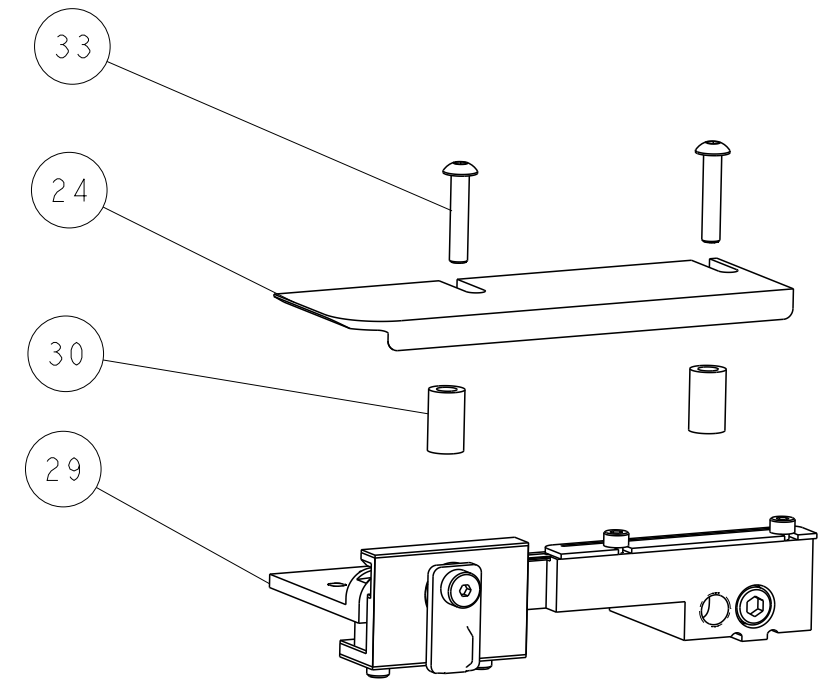
## PNEUMATIC



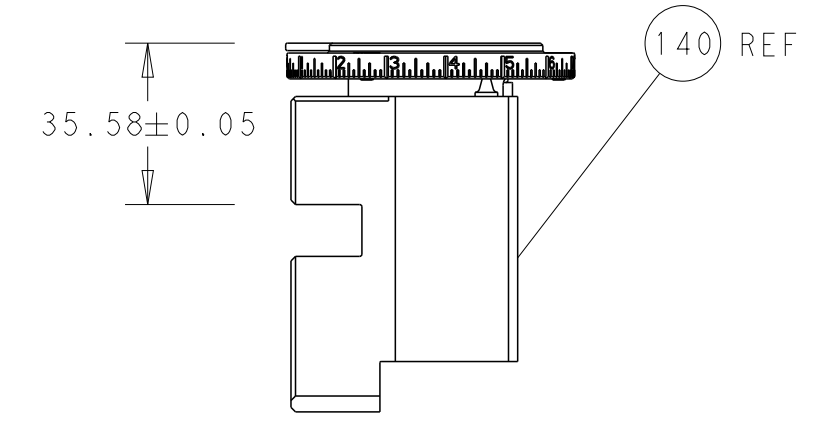
### FEED SPRING SETTING POSITION (SHOWN FROM REAR SIDE)



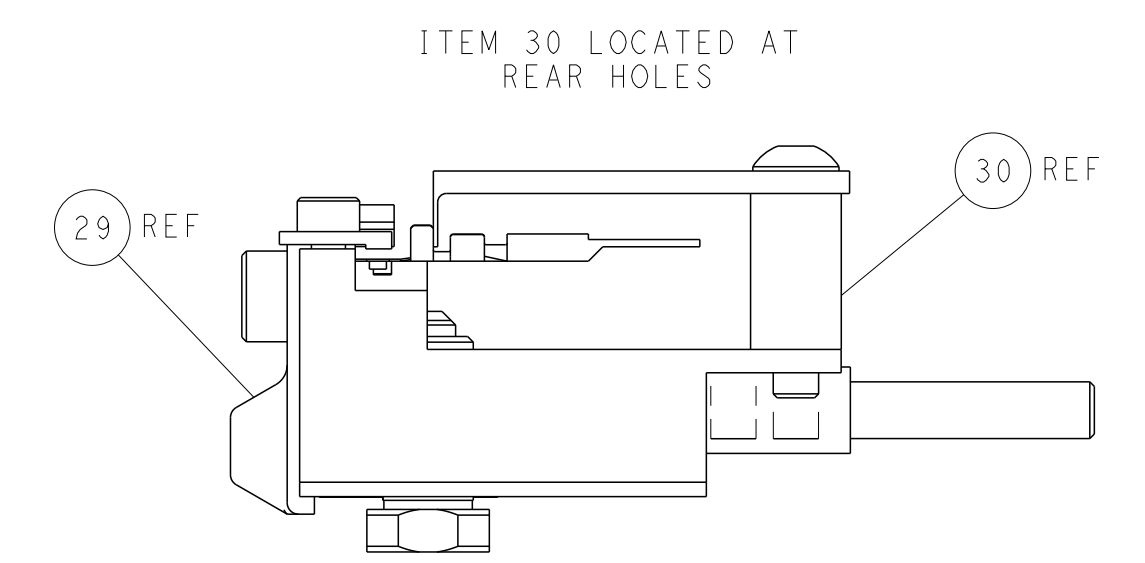
DETAIL A



TERMINAL SUPPORT LOCATION

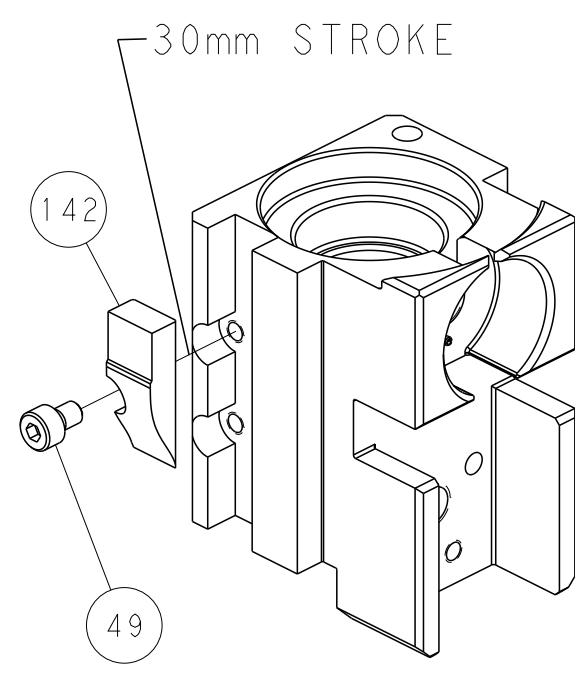


RAM SET-UP

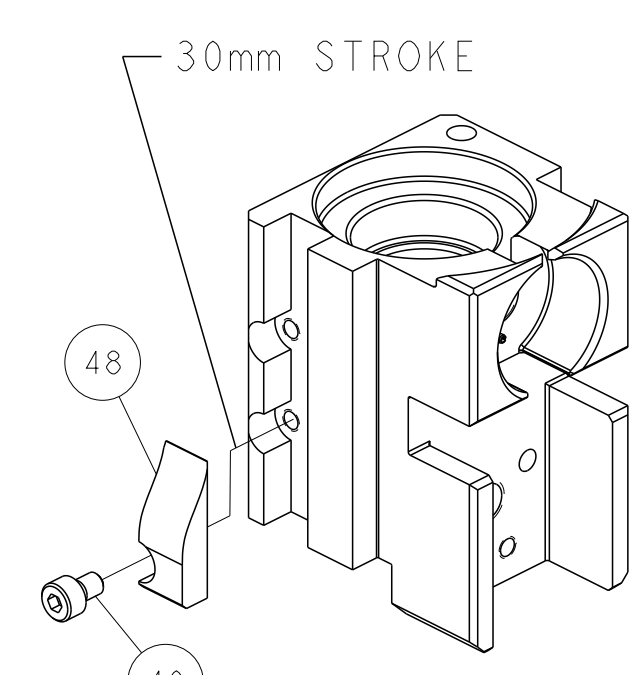


FEED TRACK POSITION GUIDE BY INSULATION BARREL

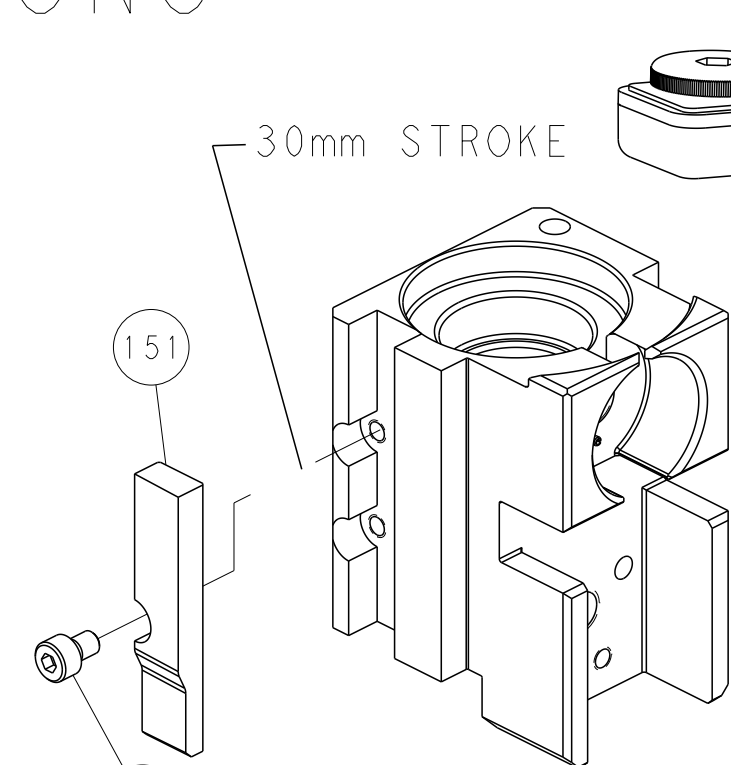
## CAM POSITIONS



MECHANICAL POST FEED



MECHANICAL PRE FEED



AIR FEED

**PACIFIC VERSION**  
 Shown on sheets 3 of 4 & 4 of 4  
 (Atlantic version shown on sheets 1 of 4 & 2 of 4)

DIMENSIONS:		TOLERANCES UNLESS OTHERWISE SPECIFIED:		DWN 04OCT2012		TE Connectivity	
mm	0 PLC ±	1 PLC ±	2 PLC ±	3 PLC ±	4 PLC ±	APVD M. CLIFFORD	Harrisburg, PA 17105-3608
MATERIAL:		FINISH:		WEIGHT:		NAME Ocean Side Feed Applicator	
				SCALE 1:2		SHEET 4 OF 4	