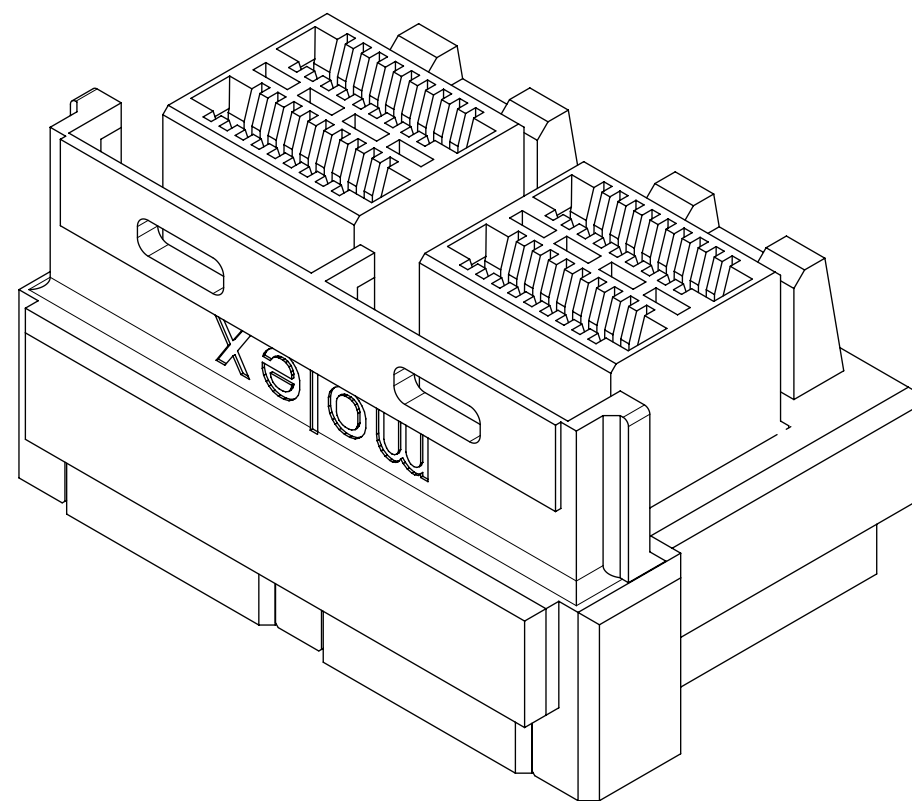
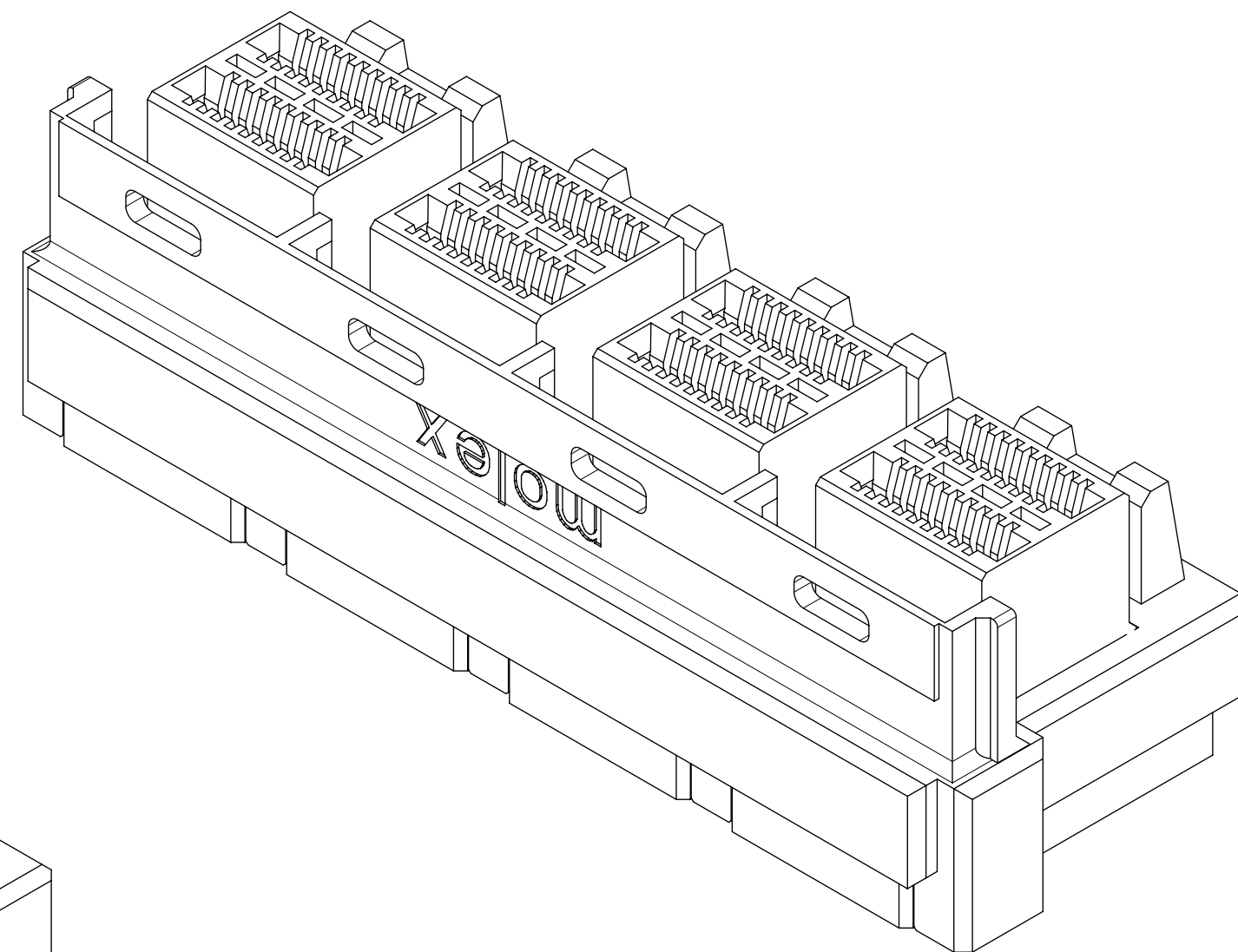


1 X 1



1 X 2



1 X 4

NOTES:

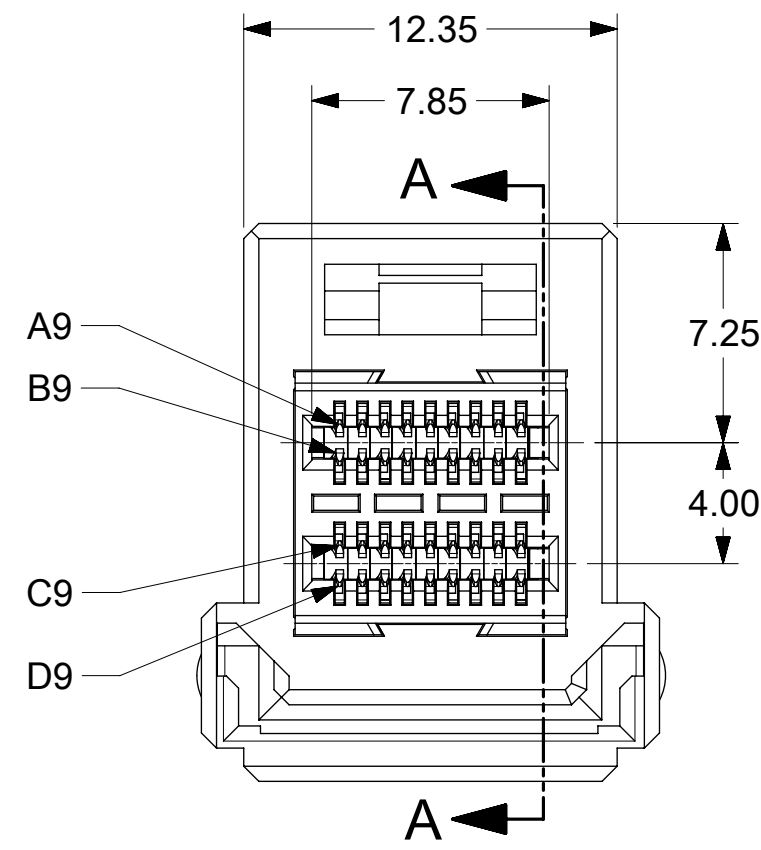
1. MATERIALS:  
CONNECTOR HOUSING: HIGH TEMPERATURE THERMOPLASTIC  
GLASS FILLED, UL 94V-0  
TERMINALS: COPPER ALLOY
2. FINISHES:  
CONTACT AREA: 0.76 μM MIN GOLD OVER 3.81 μM MIN NICKEL  
COMPLIANT AREA: 0.76 μM MIN TIN (LEAD FREE)  
OVER 1.27 μM MIN NICKEL
3. PRODUCT SPECIFICATION: PS-170729-001
4. PACKAGING SPECIFICATION: PK-76867-002
5. MATES WITH: MOLEX CABLE SERIES 111074 & 111076
6. MOUNTING HARDWARE NOT SUPPLIED.  
REFER TO APPLICATION SPECIFICATION AS-170729-0001.
7. PLUG MODULE PCB LAYOUT REFER TO SD-76866-9900

CONFIGURATION	MATERIAL NUMBER	TERMINAL OPTION	DIM 'A'
1X1	170729-0001	SHORT PIN	1.37
1X2	170729-0002		
1X4	170729-0004		
1X2	170729-1002	LONG PIN	1.62
1X4	170729-1004		

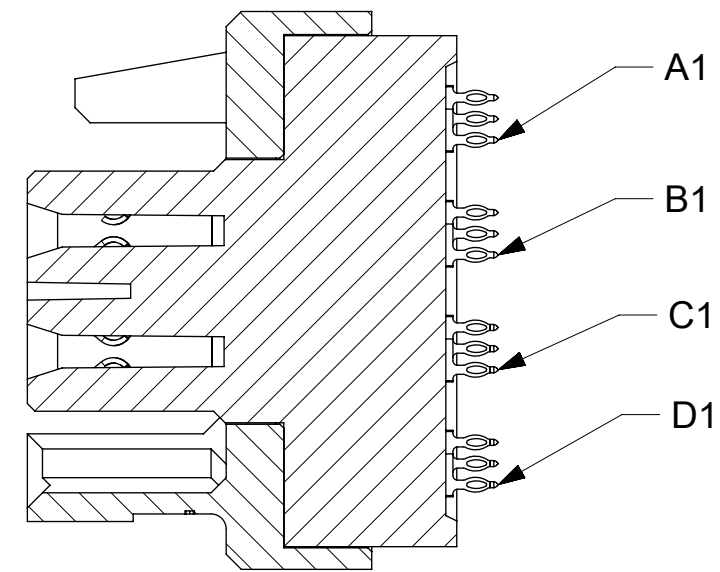
THIS DRAWING CONTAINS INFORMATION THAT IS PROPRIETARY TO MOLEX ELECTRONIC TECHNOLOGIES, LLC AND SHOULD NOT BE USED WITHOUT WRITTEN PERMISSION

DIMENSION UNITS		SCALE		CURRENT REV DESC: OBSOLETE PART NO									
mm		4:1											
GENERAL TOLERANCES (UNLESS SPECIFIED)				EC NO: 617985				IPASS VERTICAL ZHD INTERNAL ASSEMBLY 1X1, 1X2, 1X4					
		MM	INCH	DRWN: AKUMAR19 2019/05/27									
4 PLACES		±	±	CHK'D: GGA 2019/06/05				PRODUCT CUSTOMER DRAWING DOCUMENT NUMBER: SD-170729-0001   DOC TYPE: PSD   DOC PART: 000   REVISION: A1					
3 PLACES		±	±	APPR: GGA 2019/06/05									
2 PLACES		± 0.13	±	INITIAL REVISION:									
1 PLACE		± 0.25	±	DRWN: KLANG 2015/01/05									
0 PLACES		±	±	APPR: MBANAKIS 2015/01/07									
ANGULAR TOL		± 2.0 °		THIRD ANGLE PROJECTION									
DRAFT WHERE APPLICABLE MUST REMAIN WITHIN DIMENSIONS				DRAWING		SERIES		MATERIAL NUMBER		CUSTOMER		SHEET NUMBER	
				C-SIZE		170729		SEE TABLE		GENERAL MARKET		1 OF 8	

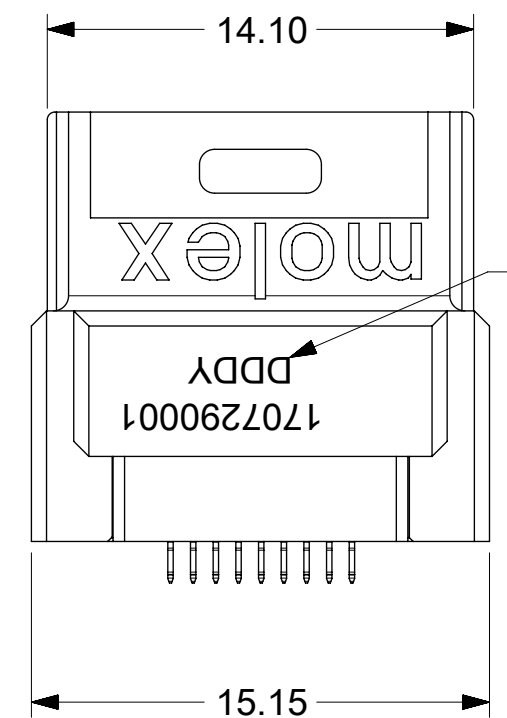
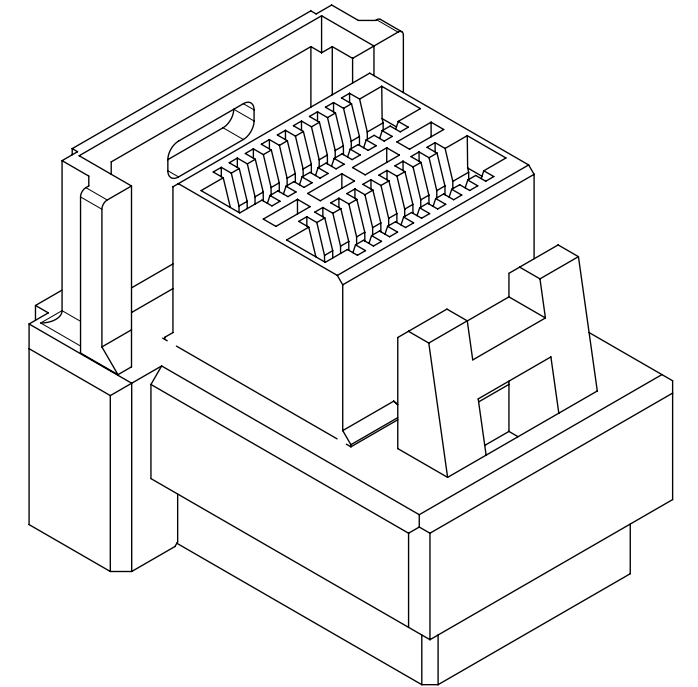
DOCUMENT STATUS	P1	RELEASE DATE	2019/06/05	03:09:14
-----------------	----	--------------	------------	----------



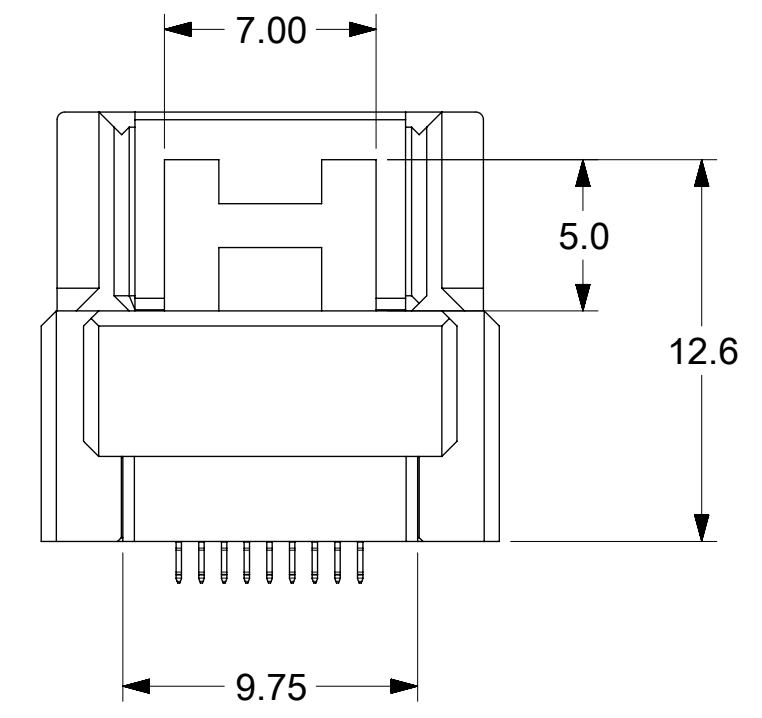
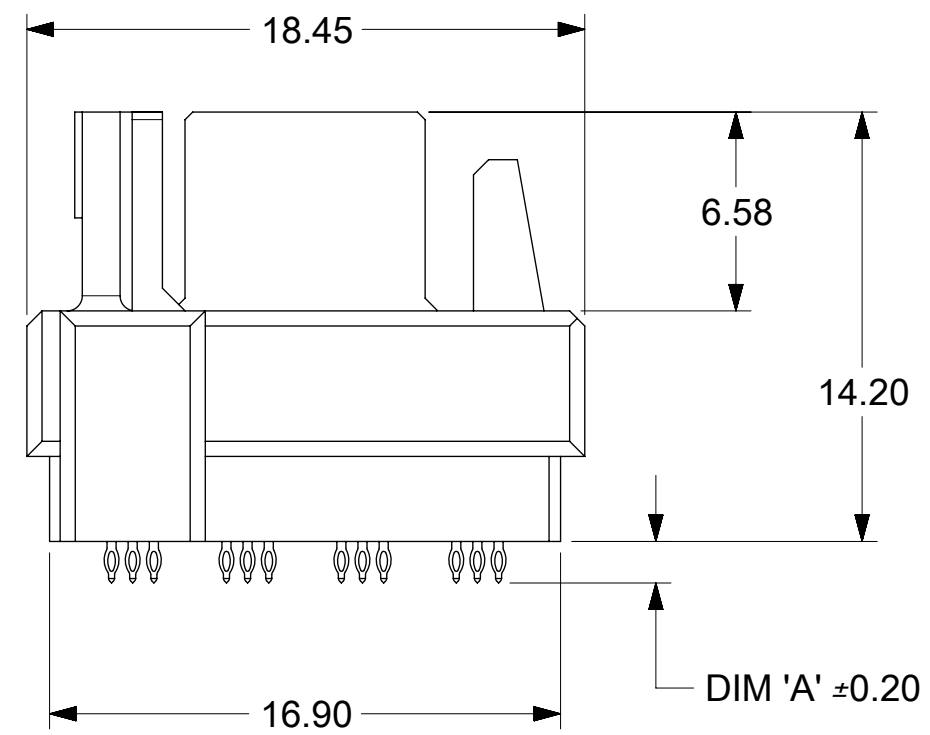
1X1 ASSEMBLY



SECTION A-A  
SCALE 4:1



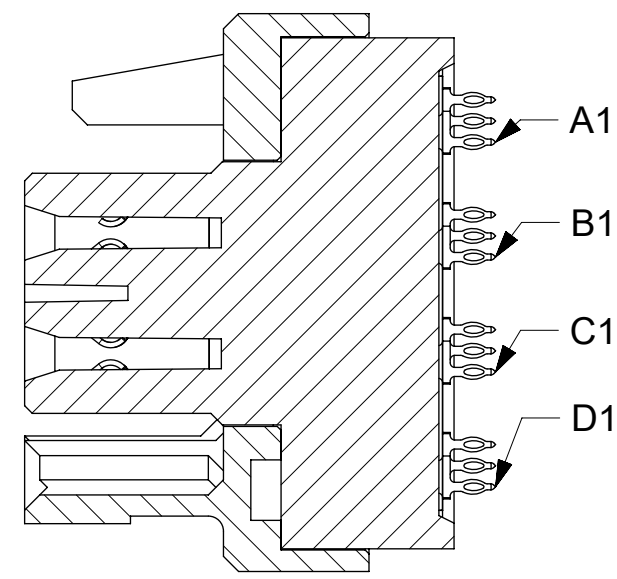
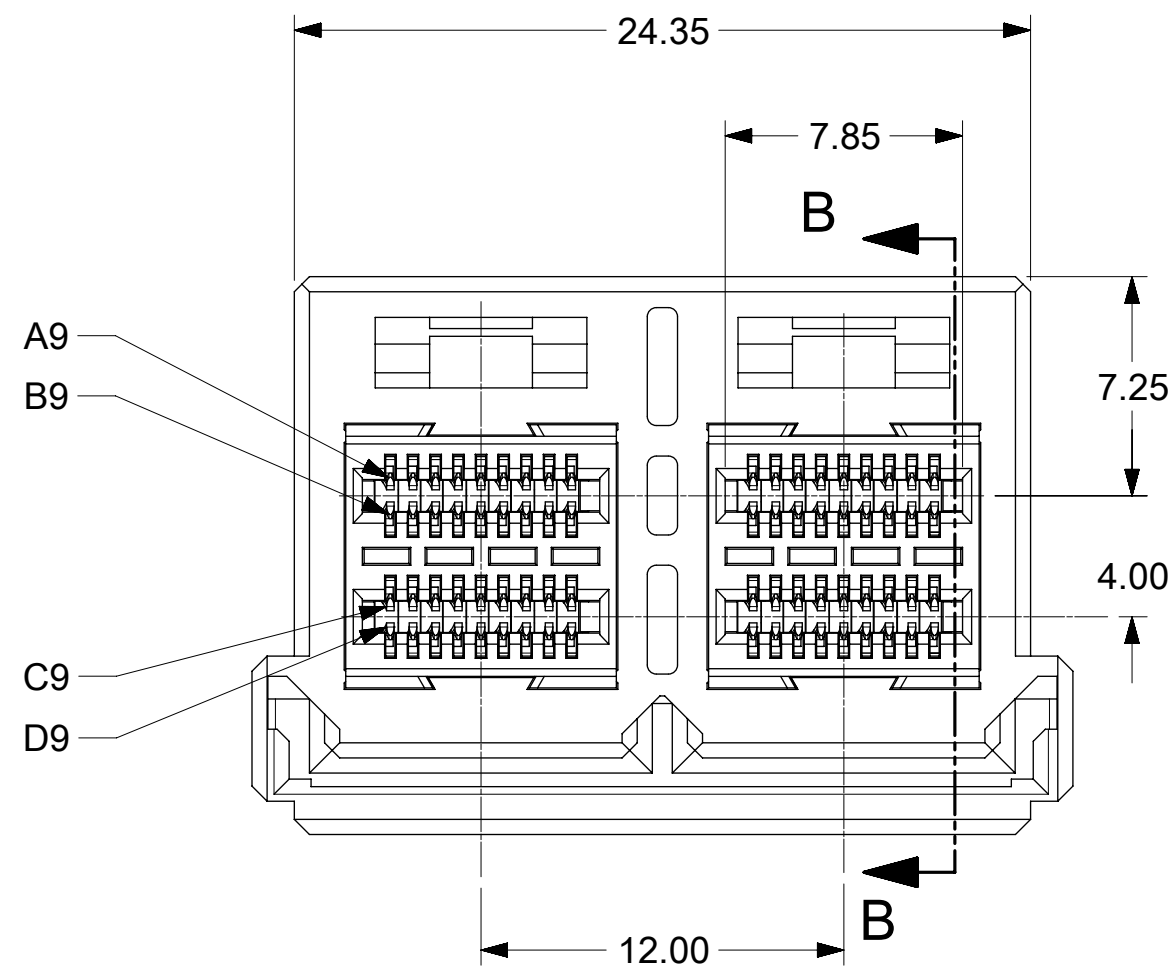
SEE NOTE 1



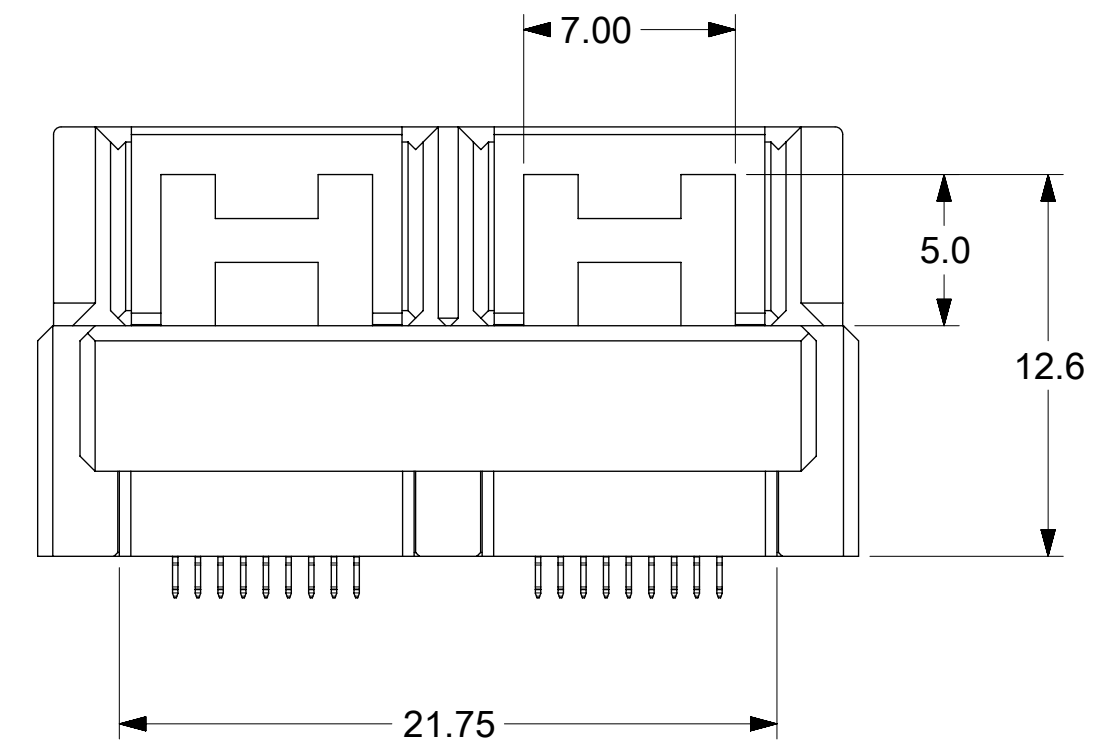
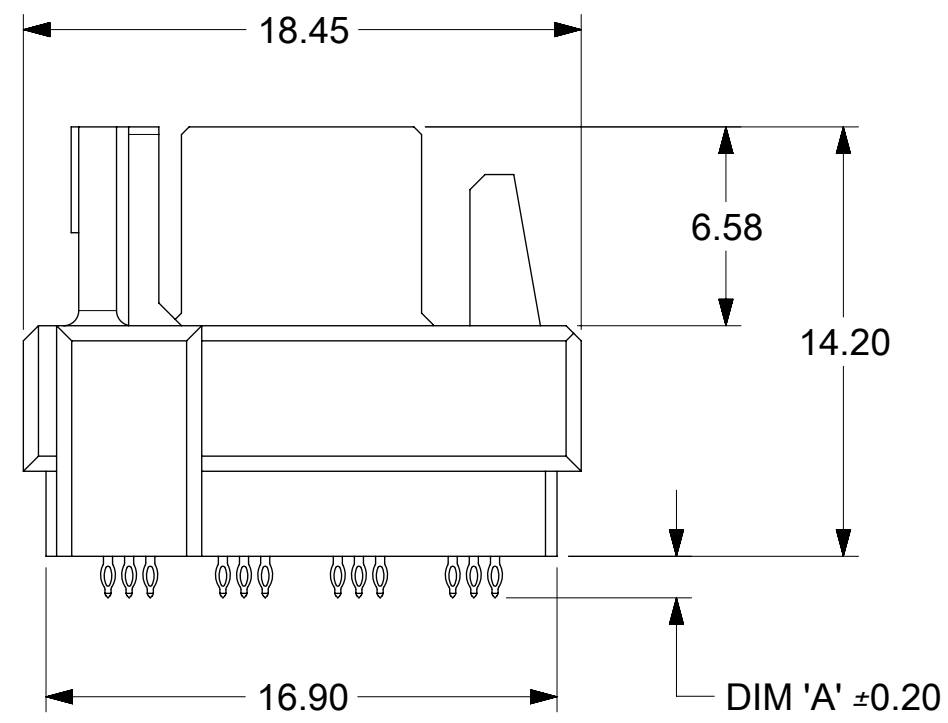
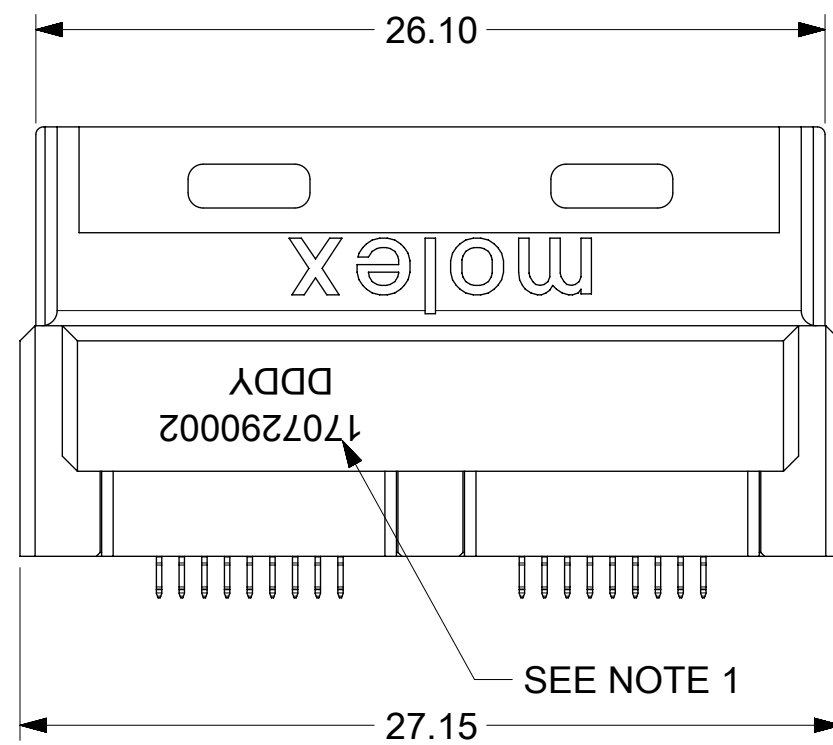
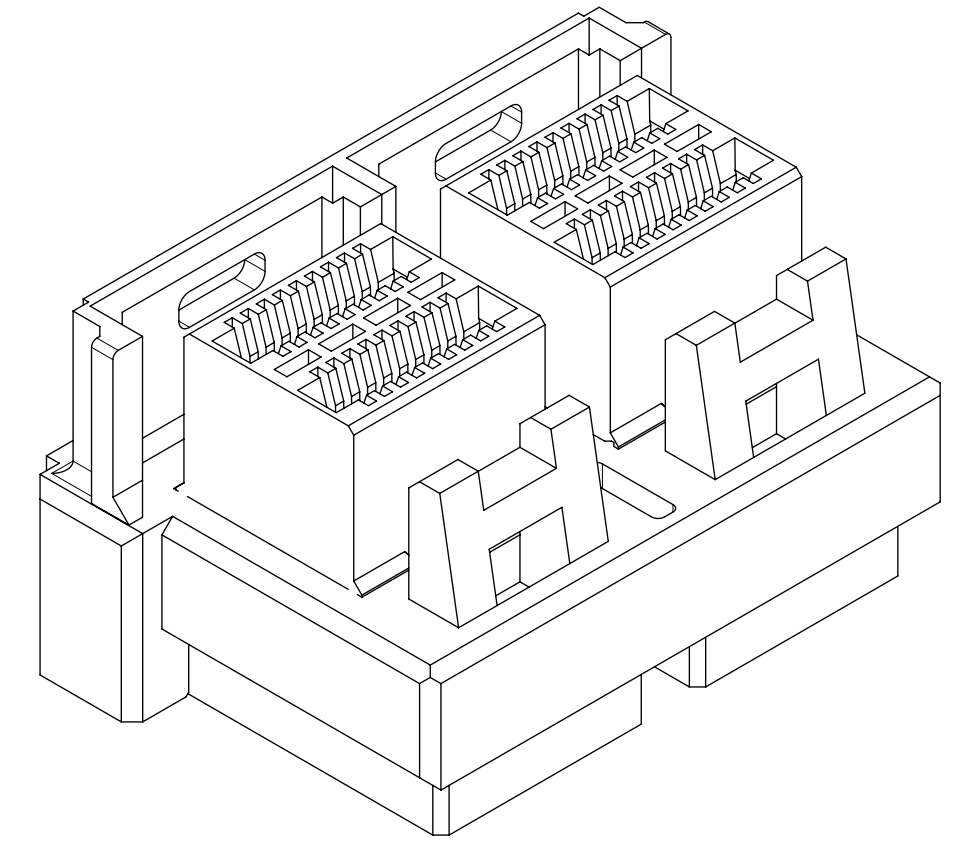
NOTES:  
1. MANUFACTURED DATE CODE (JULIAN CALENDAR) & PART NUMBER.

THIS DRAWING CONTAINS INFORMATION THAT IS PROPRIETARY TO MOLEX ELECTRONIC TECHNOLOGIES, LLC AND SHOULD NOT BE USED WITHOUT WRITTEN PERMISSION																	
DIMENSION UNITS		SCALE		CURRENT REV DESC: OBSOLETE PART NO						<b>moLEX</b>							
mm		4:1															
GENERAL TOLERANCES (UNLESS SPECIFIED)				EC NO: 617985		2019/05/27				IPASS VERTICAL ZHD INTERNAL ASSEMBLY 1X1, 1X2, 1X4							
4 PLACES		±		DRWN: AKUMAR19													
3 PLACES		±		CHK'D: GGA		2019/06/05				PRODUCT CUSTOMER DRAWING							
2 PLACES		± 0.13		APPR: GGA		2019/06/05											
1 PLACE		± 0.25		INITIAL REVISION:		2015/01/05				DOCUMENT NUMBER		DOC TYPE		DOC PART		REVISION	
0 PLACES		±		DRWN: KLANG													
ANGULAR TOL		± 2.0 °		APPR: MBANAKIS		2015/01/07				SD-170729-0001		PSD		000		A1	
DRAFT WHERE APPLICABLE MUST REMAIN WITHIN DIMENSIONS				THIRD ANGLE PROJECTION		DRAWING		SERIES		MATERIAL NUMBER		CUSTOMER		SHEET NUMBER			
						C-SIZE		170729		SEE TABLE		GENERAL MARKET		2 OF 8			

# 1X2 ASSEMBLY



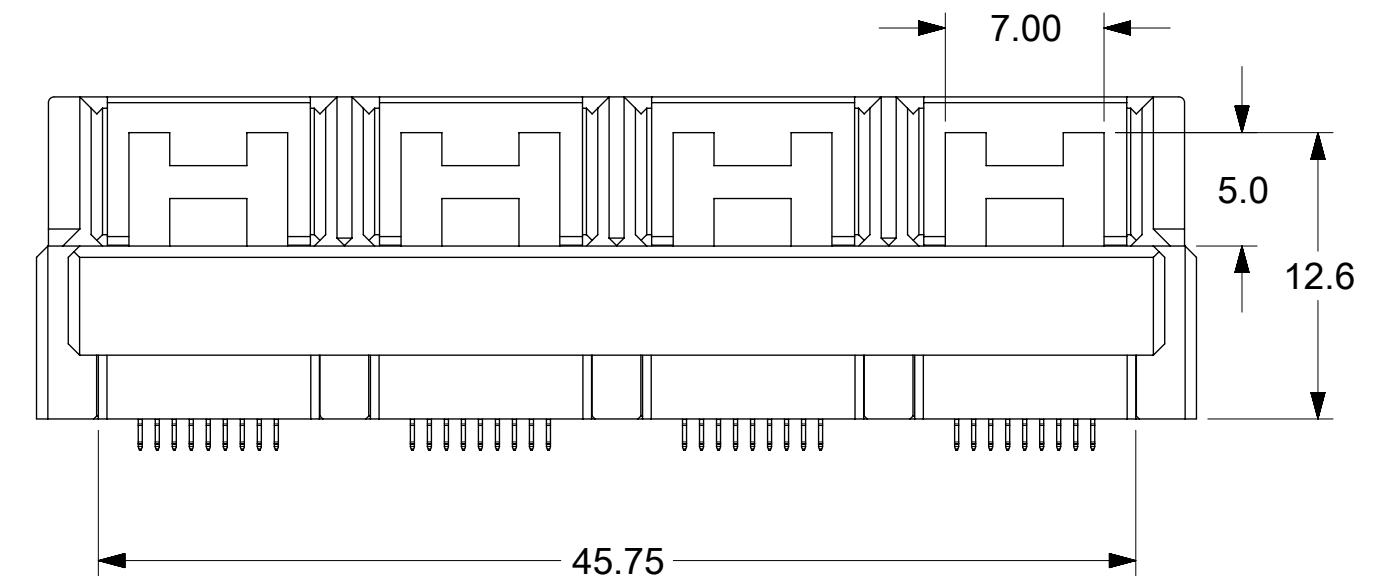
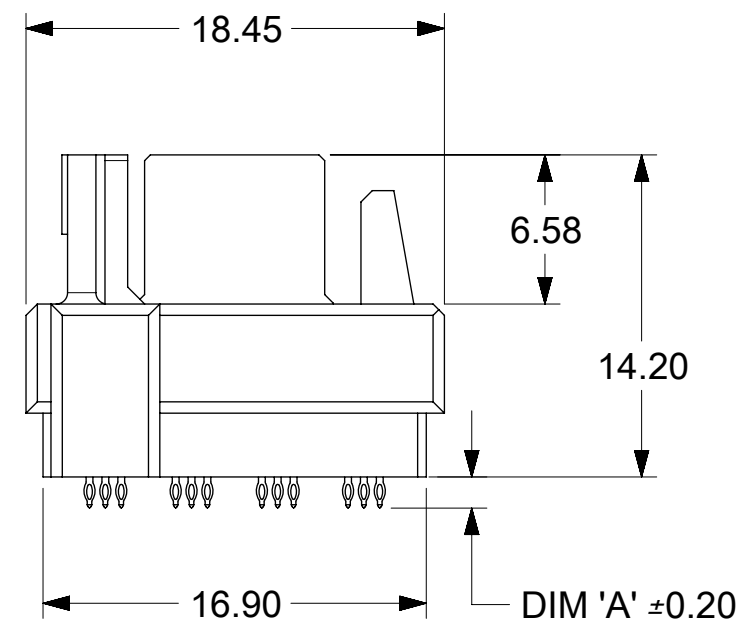
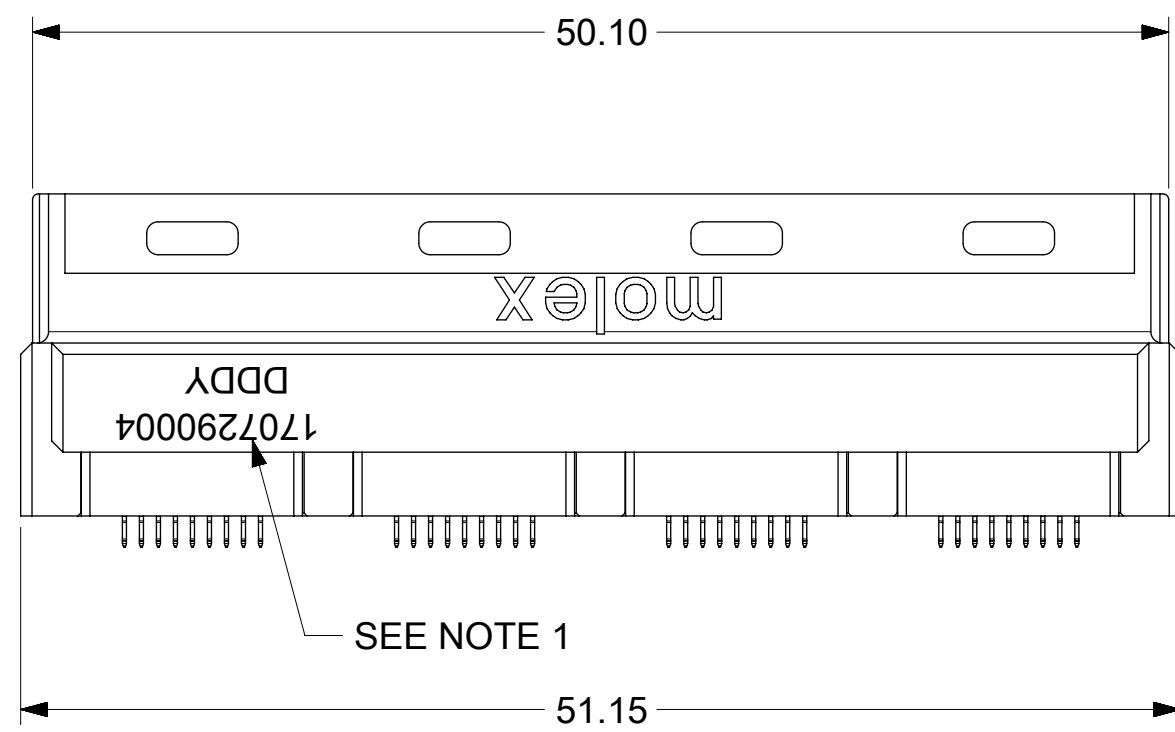
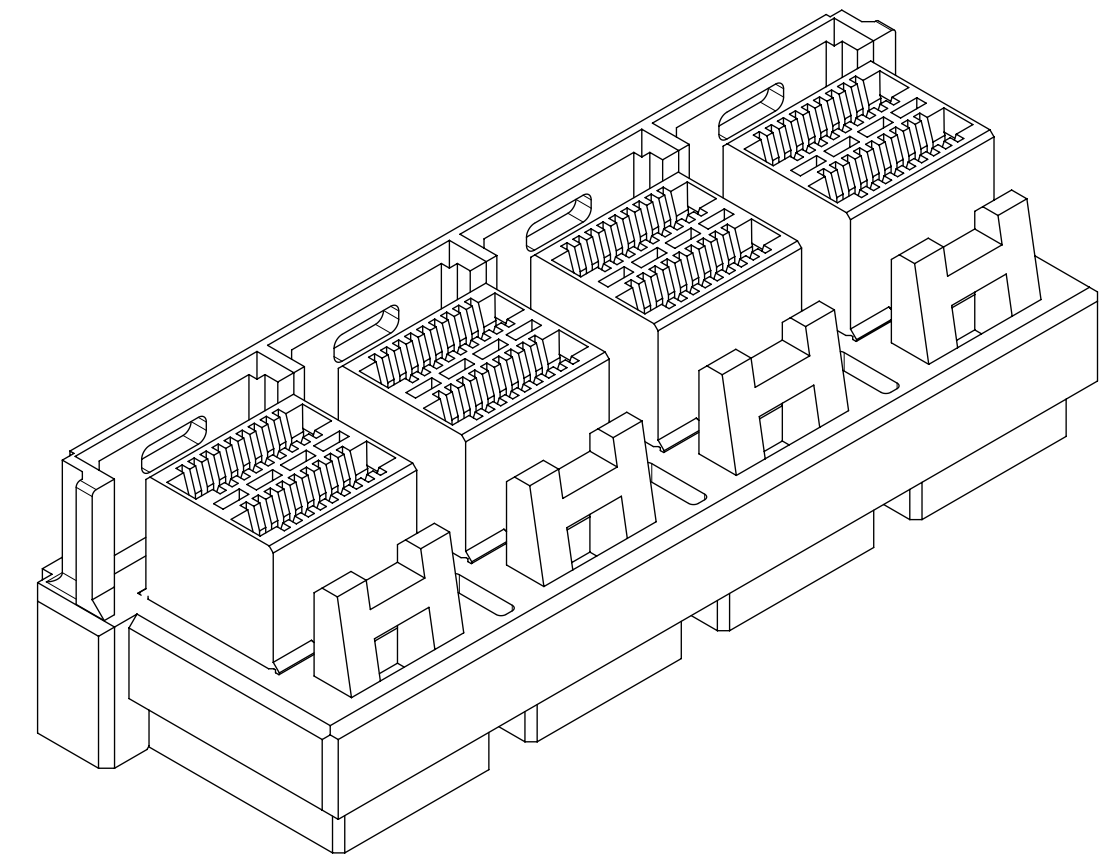
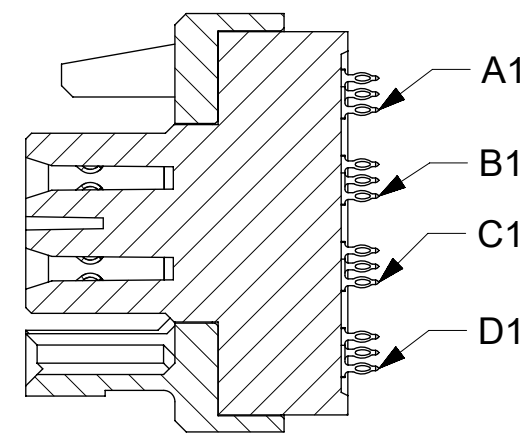
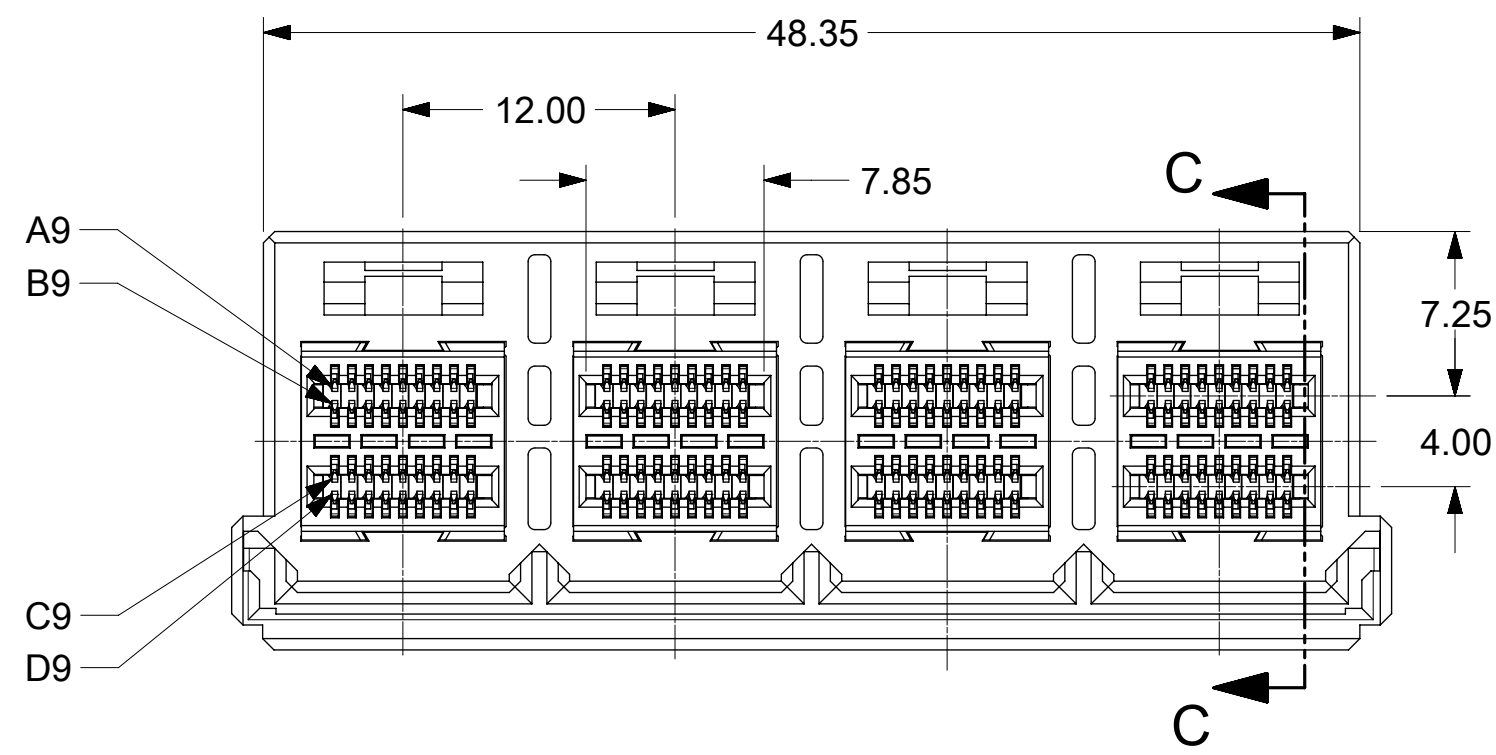
SECTION B-B



NOTES:  
1. MANUFACTURED DATE CODE (JULIAN CALENDAR) & PART NUMBER.

THIS DRAWING CONTAINS INFORMATION THAT IS PROPRIETARY TO MOLEX ELECTRONIC TECHNOLOGIES, LLC AND SHOULD NOT BE USED WITHOUT WRITTEN PERMISSION									
DIMENSION UNITS		SCALE		CURRENT REV DESC: OBSOLETE PART NO					
mm		4:1		<p><b>molex</b></p> <p>IPASS VERTICAL ZHD INTERNAL ASSEMBLY 1X1, 1X2, 1X4</p> <p>PRODUCT CUSTOMER DRAWING</p> <p>DOCUMENT NUMBER: <b>SD-170729-0001</b>   DOC TYPE: PSD   DOC PART: 000   REVISION: <b>A1</b></p> <p>MATERIAL NUMBER: SEE TABLE   CUSTOMER: GENERAL MARKET   SHEET NUMBER: 3 OF 8</p>					
GENERAL TOLERANCES (UNLESS SPECIFIED)									
4 PLACES	±								
3 PLACES	±								
2 PLACES	±	0.13							
1 PLACE	±	0.25							
0 PLACES	±								
ANGULAR TOL ± 2.0 °				<p>EC NO: 617985</p> <p>DRWN: AKUMAR19 2019/05/27</p> <p>CHK'D: GGA 2019/06/05</p> <p>APPR: GGA 2019/06/05</p> <p>INITIAL REVISION:</p> <p>DRWN: KLANG 2015/01/05</p> <p>APPR: MBANAKIS 2015/01/07</p>					
DRAFT WHERE APPLICABLE MUST REMAIN WITHIN DIMENSIONS				THIRD ANGLE PROJECTION		DRAWING		SERIES	
						C-SIZE		170729	

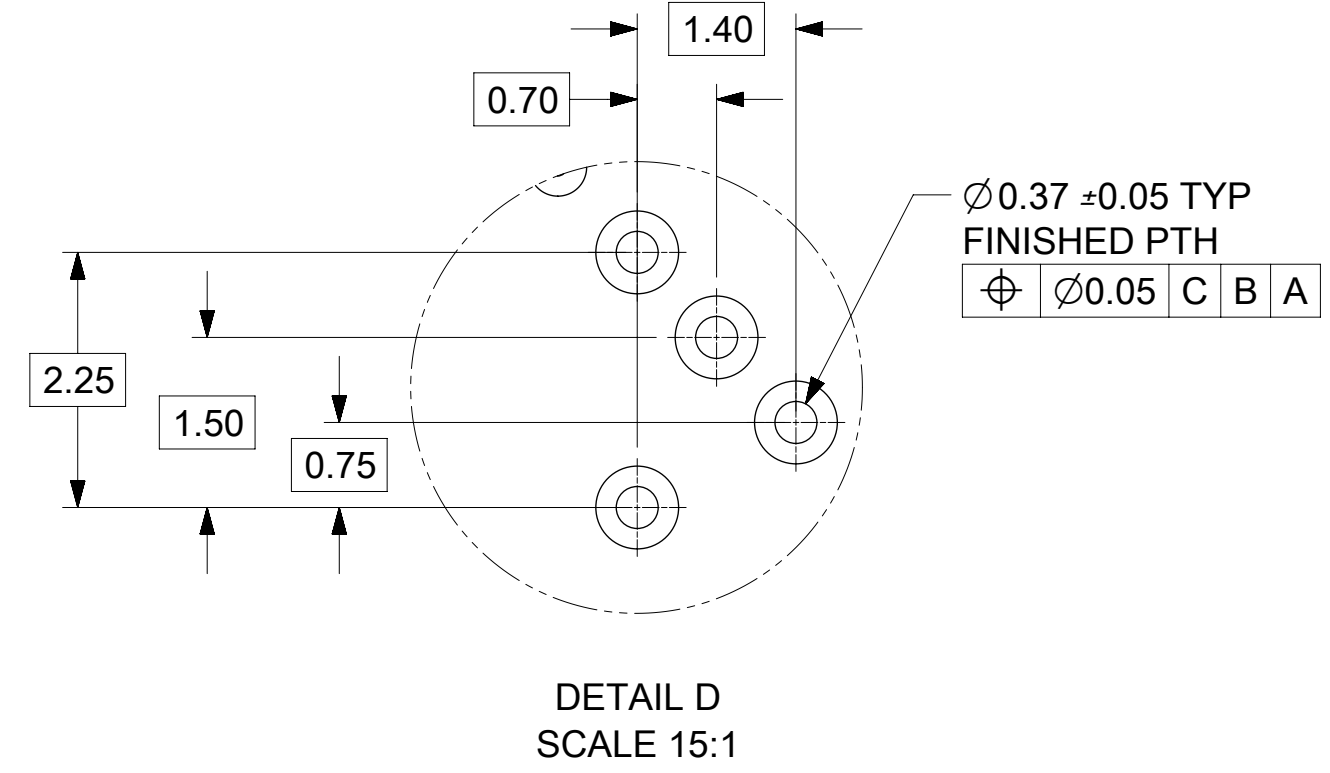
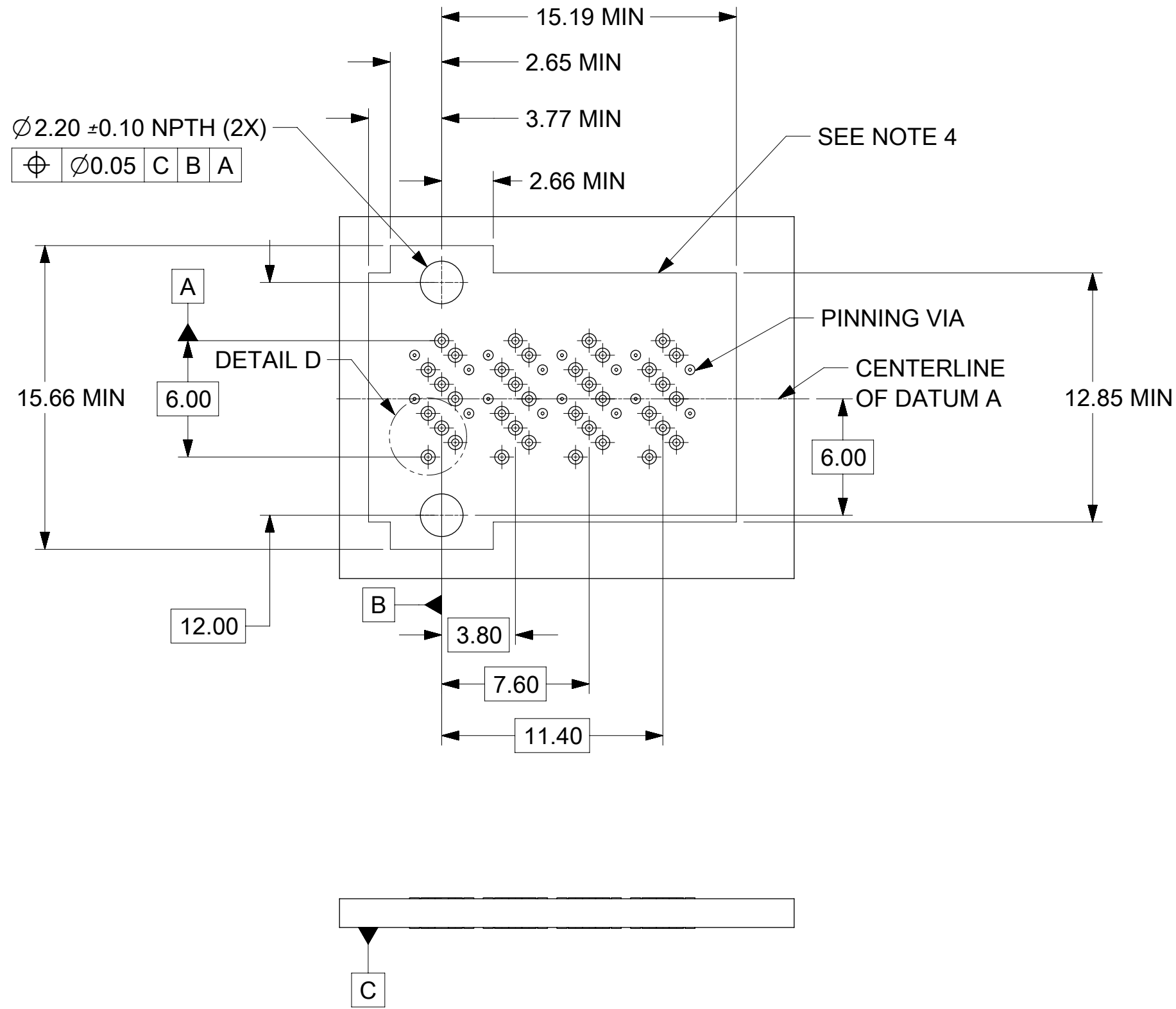
# 1X4 ASSEMBLY



NOTES:  
1. MANUFACTURED DATE CODE (JULIAN CALENDAR) & PART NUMBER.

THIS DRAWING CONTAINS INFORMATION THAT IS PROPRIETARY TO MOLEX ELECTRONIC TECHNOLOGIES, LLC AND SHOULD NOT BE USED WITHOUT WRITTEN PERMISSION									
DIMENSION UNITS		SCALE		CURRENT REV DESC: OBSOLETE PART NO					
mm		3:1		<b>molex</b> IPASS VERTICAL ZHD INTERNAL ASSEMBLY 1X1, 1X2, 1X4 PRODUCT CUSTOMER DRAWING					
GENERAL TOLERANCES (UNLESS SPECIFIED)									
	MM	INCH							
4 PLACES	±	±							
3 PLACES	±	±							
2 PLACES	± 0.13	±		EC NO: 617985		2019/05/27			
1 PLACE	± 0.25	±		DRWN: AKUMAR19		2019/06/05			
0 PLACES	±	±		CHK'D: GGA		2019/06/05			
ANGULAR TOL ± 2.0 °				APPR: GGA		2019/06/05			
DRAFT WHERE APPLICABLE MUST REMAIN WITHIN DIMENSIONS				THIRD ANGLE PROJECTION		DRAWING		SERIES	
				C-SIZE		170729			
DOCUMENT NUMBER		DOC TYPE		DOC PART		REVISION			
SD-170729-0001		PSD		000		A1			
MATERIAL NUMBER		CUSTOMER		SHEET NUMBER					
SEE TABLE		GENERAL MARKET		4 OF 8					

DOCUMENT STATUS	P1	RELEASE DATE	2019/06/05	03:09:14
-----------------	----	--------------	------------	----------

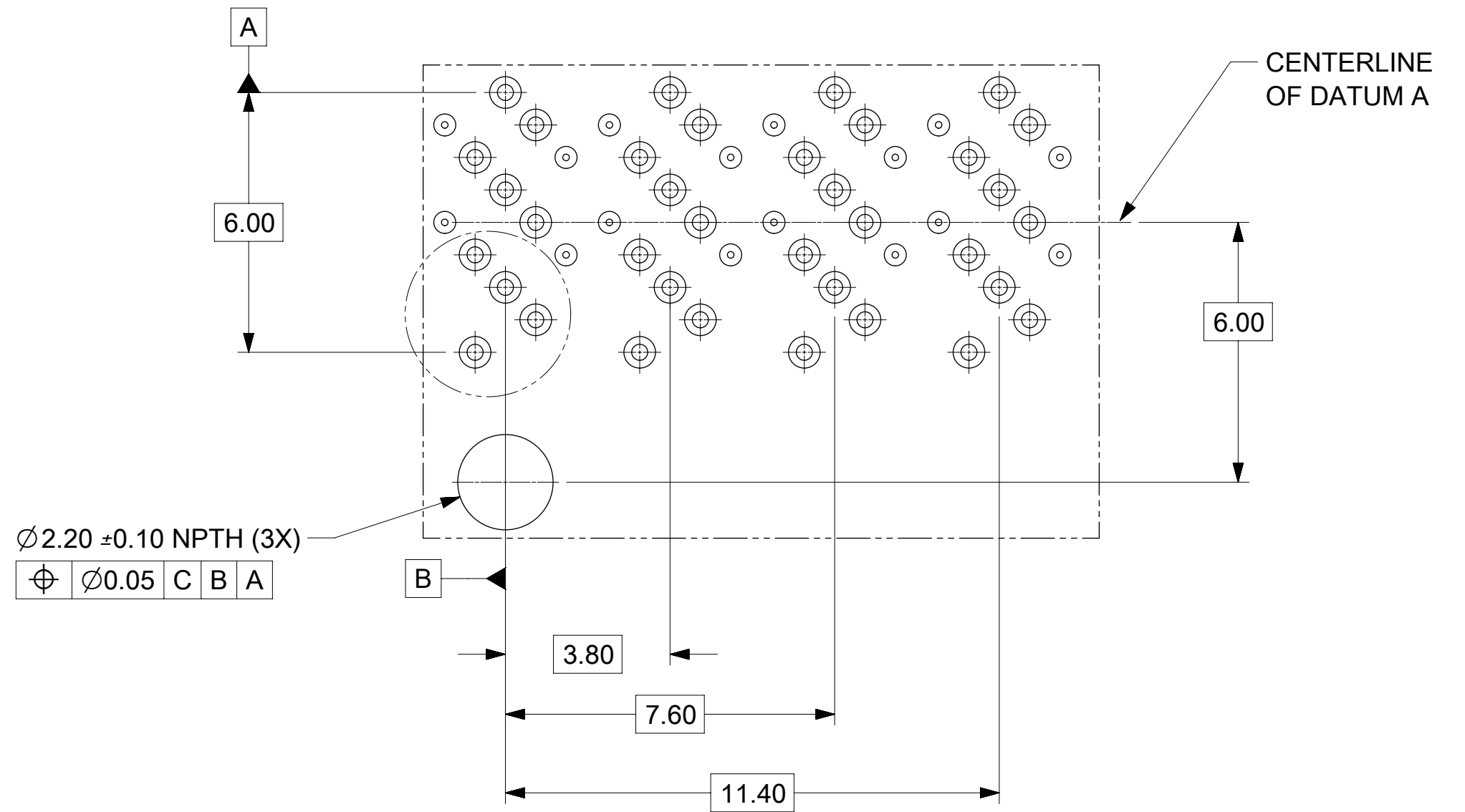
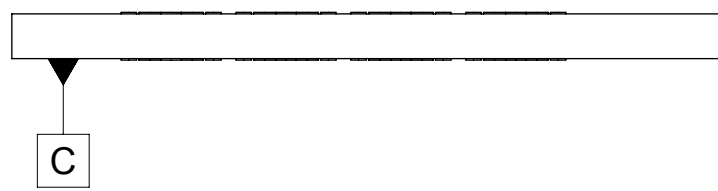
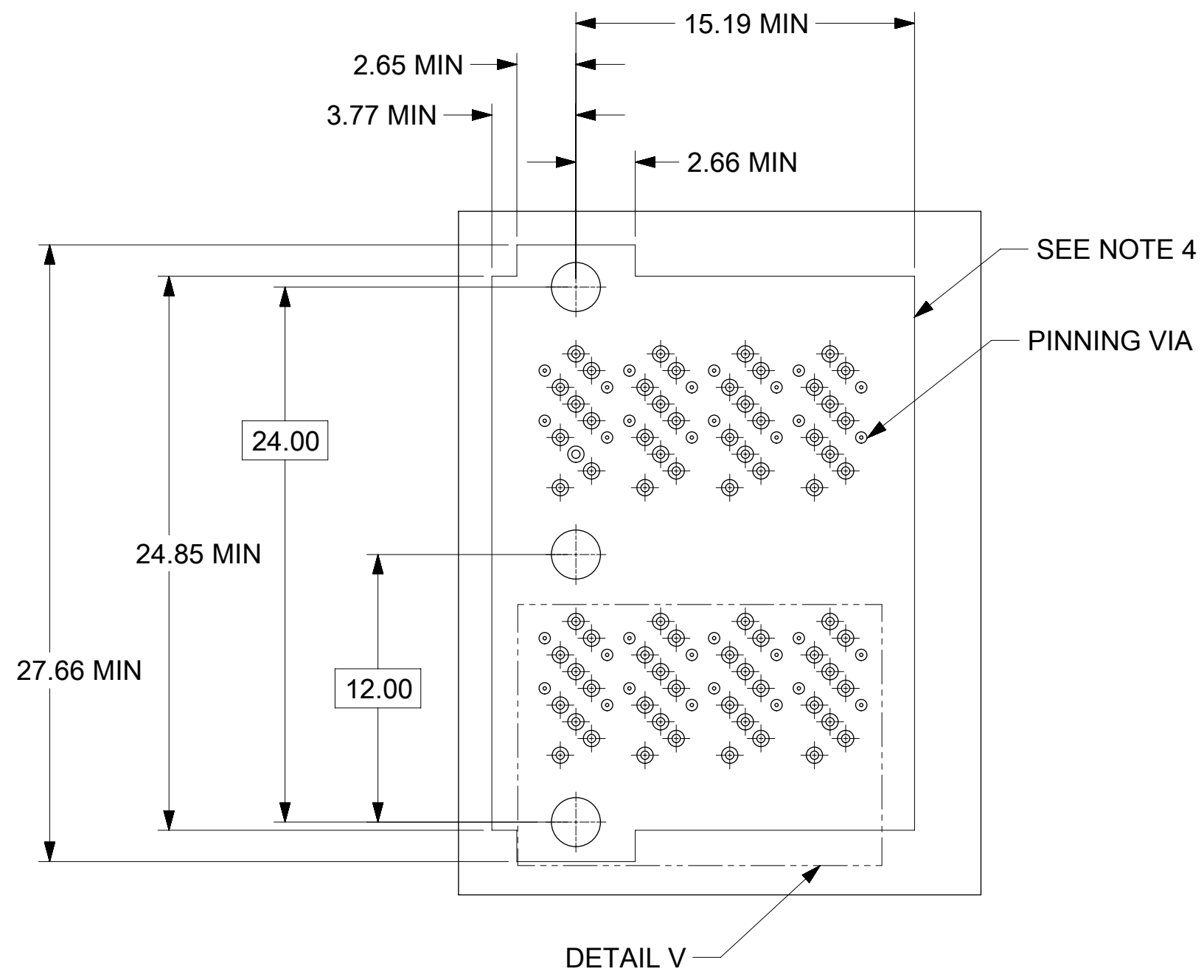


- NOTES:
1. RECOMMENDED DRILL SIZE FOR A 0.37Ø FINISHED PTH REFER TO APPLICATION SPECIFICATION AS-170729-0001
  2. MINIMUM RECOMMENDED SPACING IS 16.00MM
  3. MINIMUM RECOMMENDED PCB THICKNESS: 1.57MM
  4. CONNECTOR KEEP OUT AREA

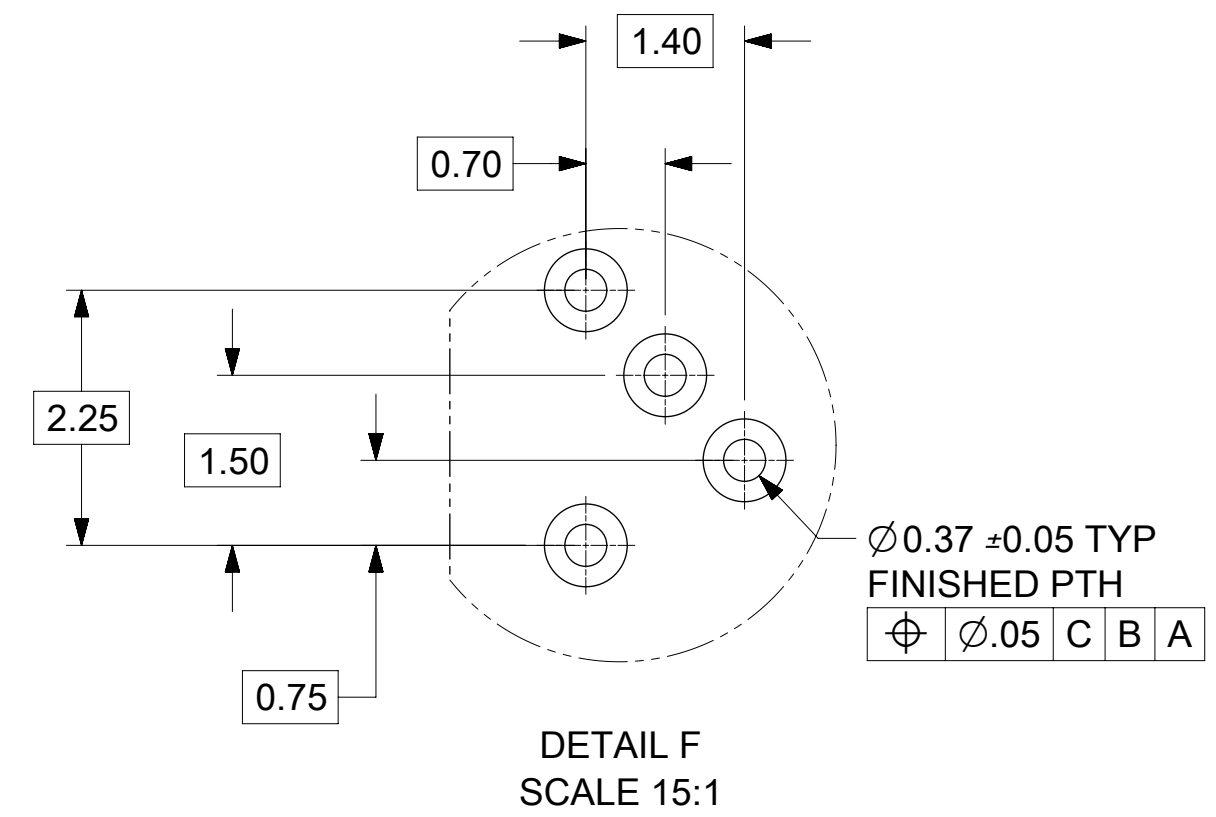
# 1X1 RECOMMENDED FOOTPRINT

THIS DRAWING CONTAINS INFORMATION THAT IS PROPRIETARY TO MOLEX ELECTRONIC TECHNOLOGIES, LLC AND SHOULD NOT BE USED WITHOUT WRITTEN PERMISSION									
DIMENSION UNITS		SCALE		CURRENT REV DESC: OBSOLETE PART NO				<b>molex</b>	
mm		4:1							
GENERAL TOLERANCES (UNLESS SPECIFIED)				EC NO: 617985				IPASS VERTICAL ZHD INTERNAL ASSEMBLY 1X1, 1X2, 1X4	
		MM	INCH	DRWN: AKUMAR19		2019/05/27			
4 PLACES		±	±	CHK'D: GGA		2019/06/05		PRODUCT CUSTOMER DRAWING	
3 PLACES		±	±	APPR: GGA		2019/06/05			
2 PLACES		± 0.13	±	INITIAL REVISION:				DOCUMENT NUMBER	
1 PLACE		± 0.25	±	DRWN: KLANG					
0 PLACES		±	±	APPR: MBANAKIS				SD-170729-0001	
ANGULAR TOL		± 2.0 °		THIRD ANGLE PROJECTION		DRAWING		SERIES	
DRAFT WHERE APPLICABLE MUST REMAIN WITHIN DIMENSIONS				C-SIZE		170729		SHEET NUMBER	
MATERIAL NUMBER		CUSTOMER		DOC TYPE		DOC PART		REVISION	
SEE TABLE		GENERAL MARKET		PSD		000		A1	
								5 OF 8	

DOCUMENT STATUS	P1	RELEASE DATE	2019/06/05 03:09:14
-----------------	----	--------------	---------------------



DETAIL E  
SCALE 8:1



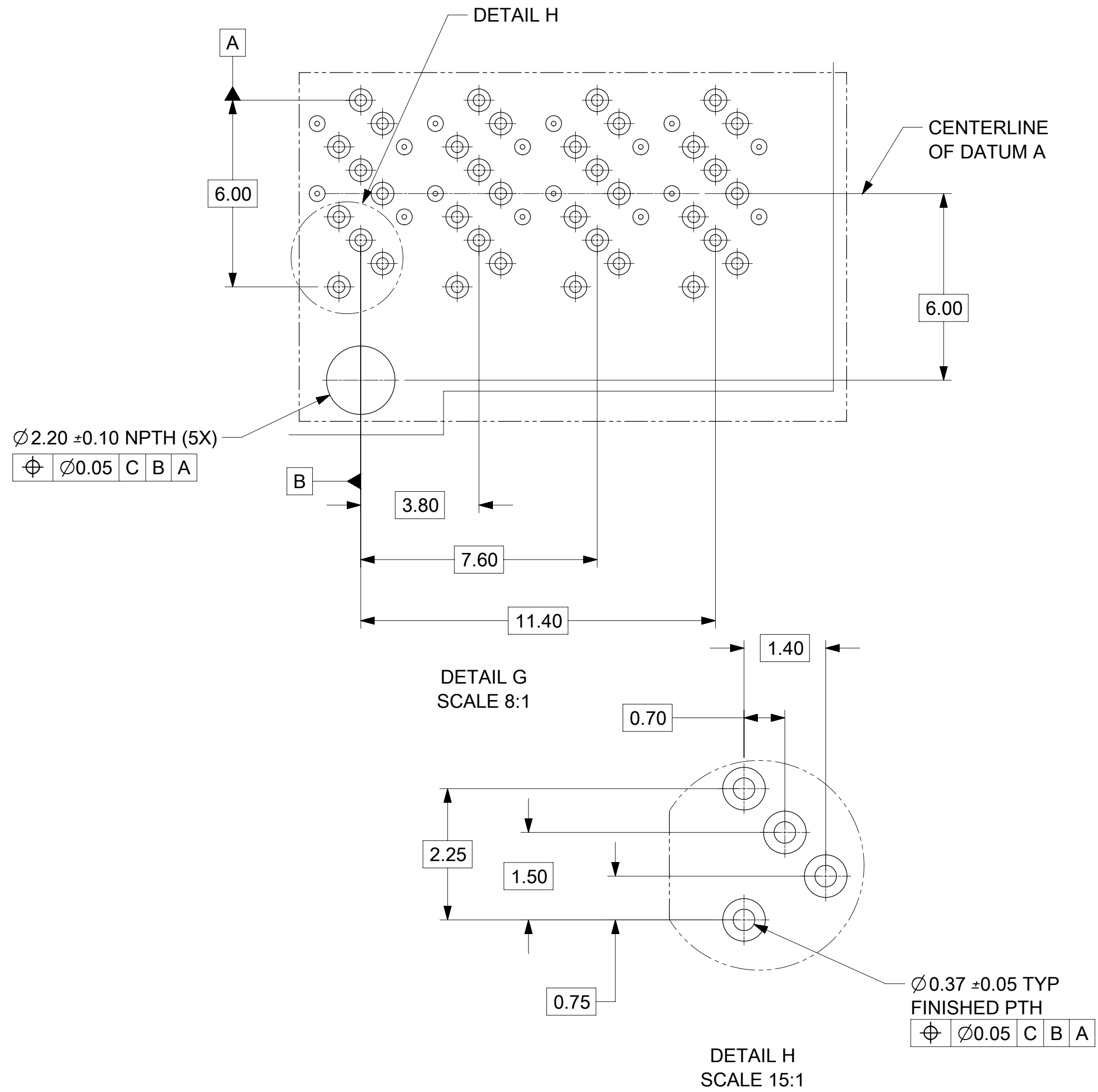
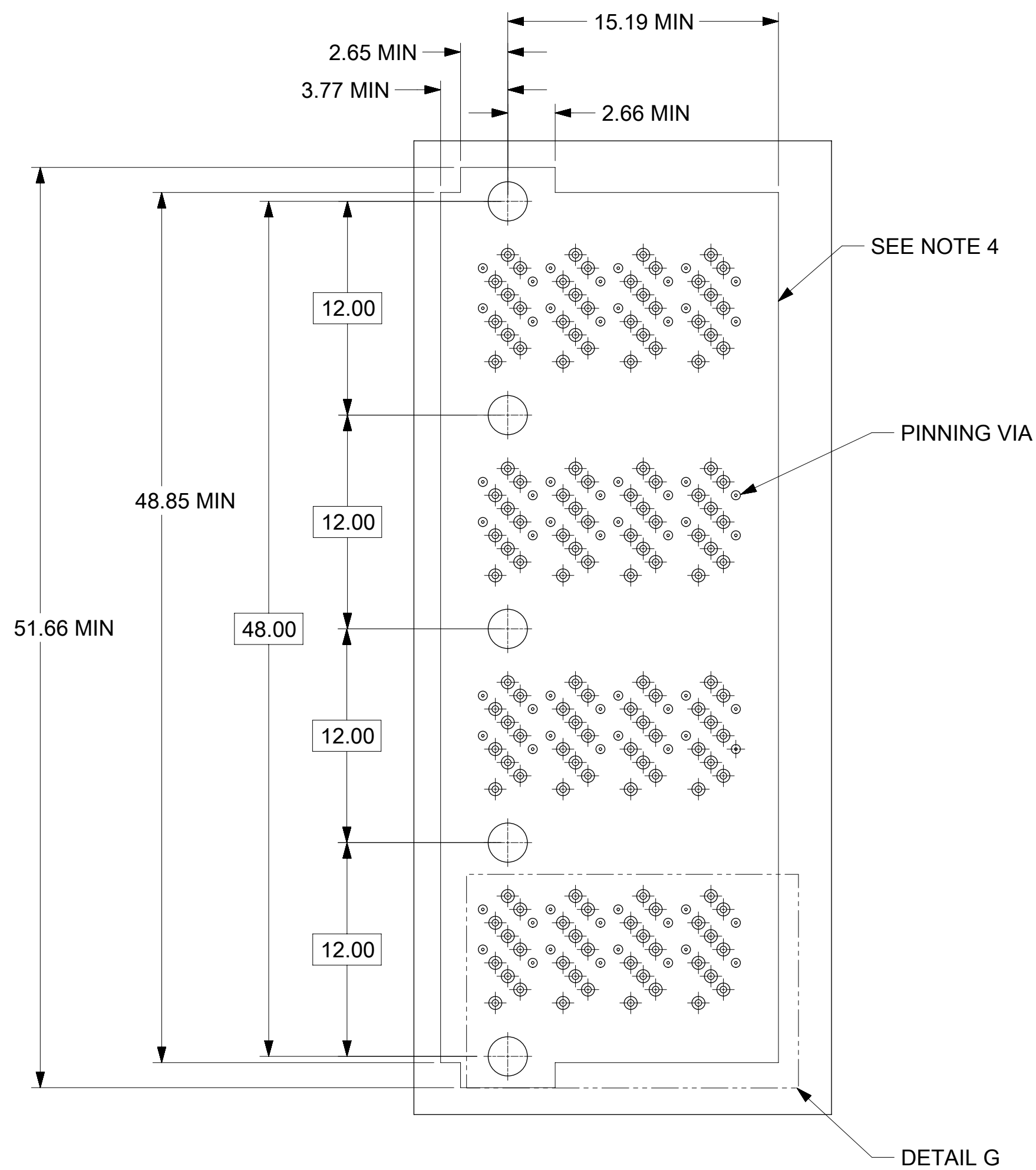
DETAIL F  
SCALE 15:1

NOTES:

1. RECOMMENDED DRILL SIZE FOR A 0.37Ø FINISHED PTH REFER TO APPLICATION SPECIFICATION AS-170729-0001
2. MINIMUM RECOMMENDED SPACING IS 28.00MM
3. MINIMUM RECOMMENDED PCB THICKNESS: 1.57MM
4. CONNECTOR KEEP OUT AREA

1X2 RECOMMENDED FOOTPRINT

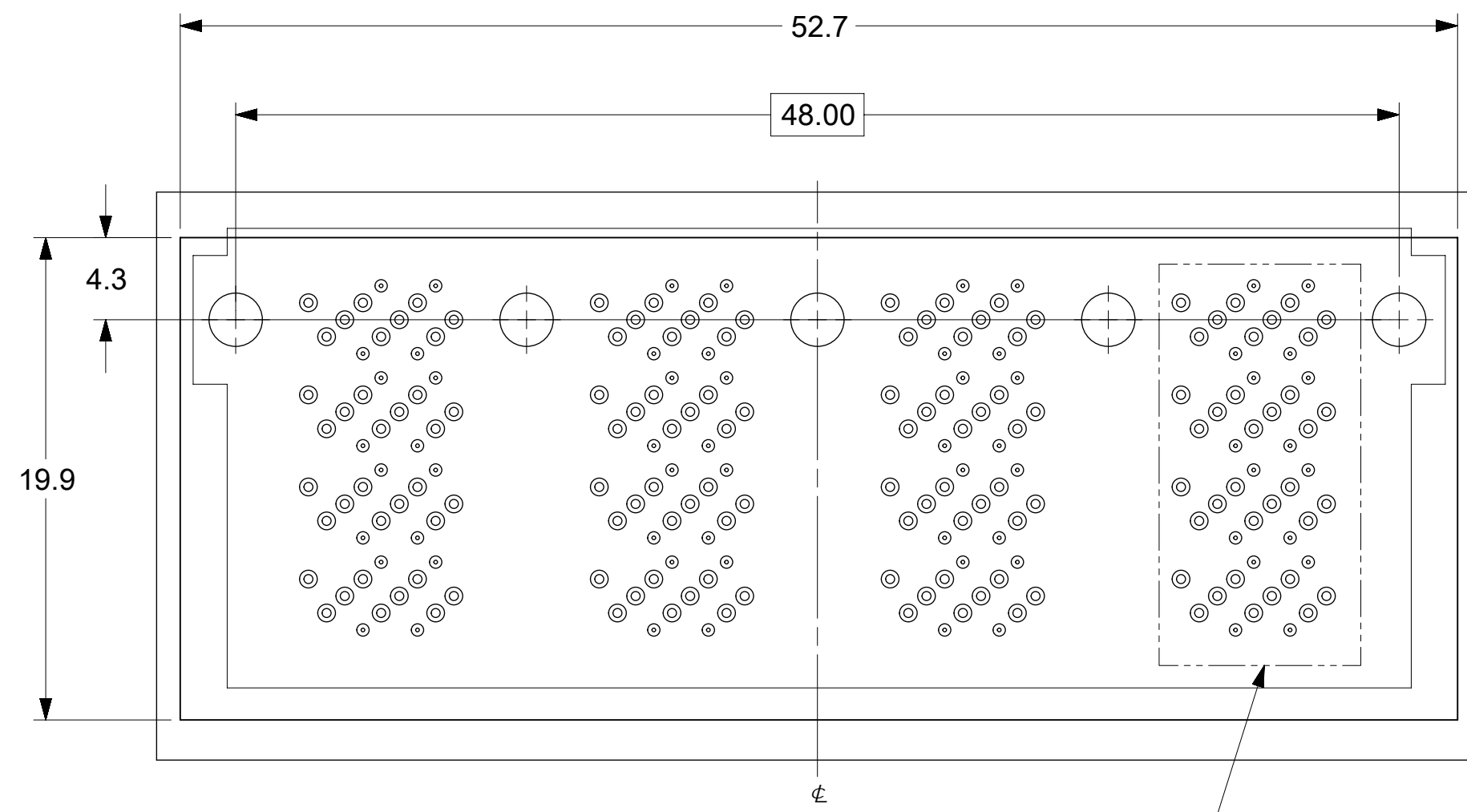
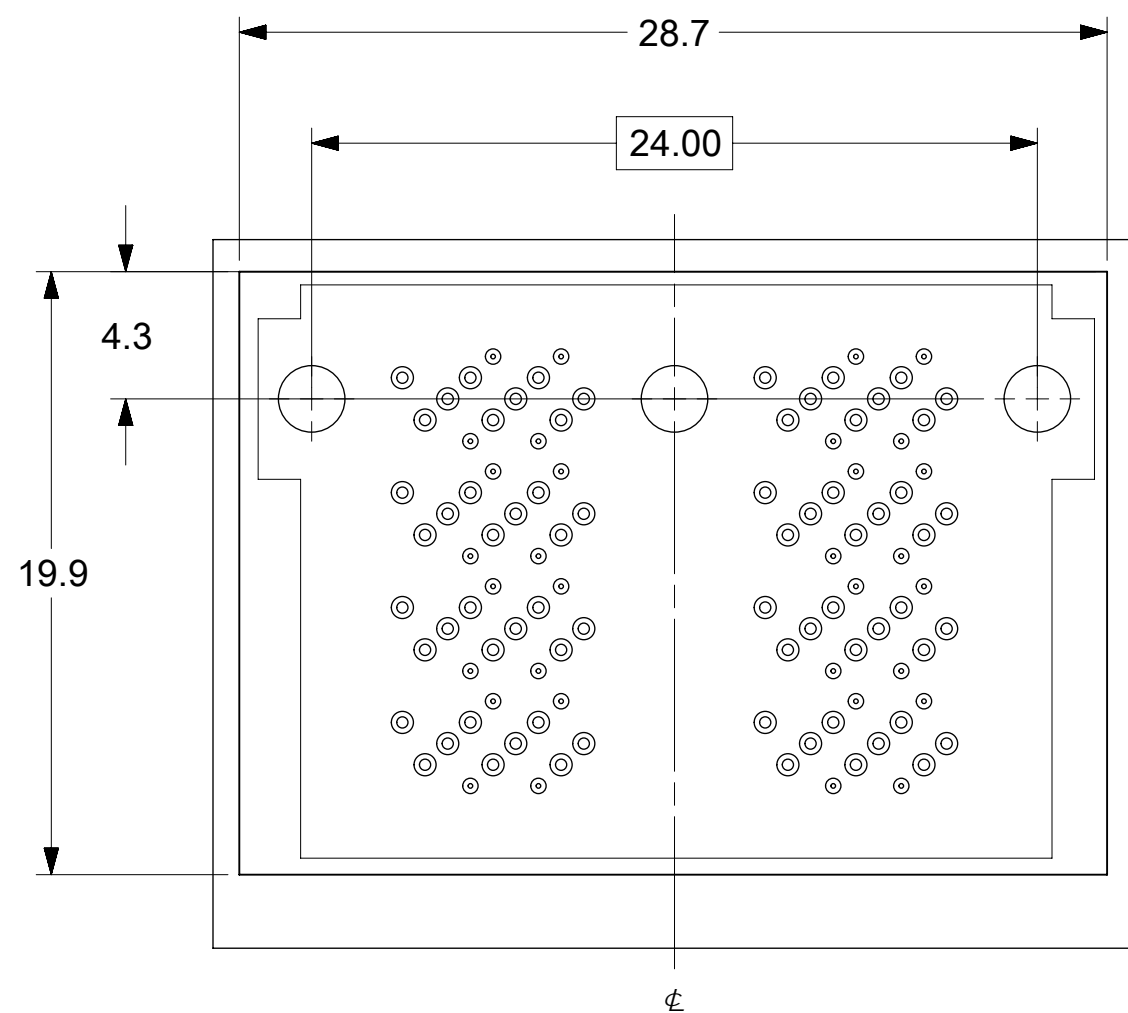
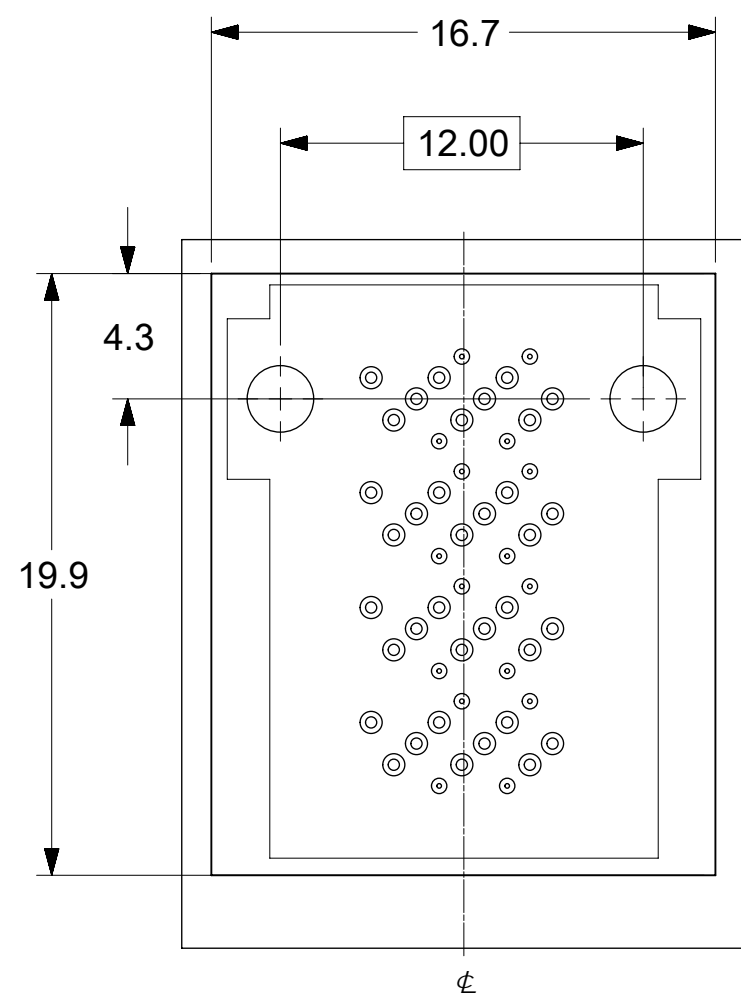
THIS DRAWING CONTAINS INFORMATION THAT IS PROPRIETARY TO MOLEX ELECTRONIC TECHNOLOGIES, LLC AND SHOULD NOT BE USED WITHOUT WRITTEN PERMISSION														
DIMENSION UNITS		SCALE		CURRENT REV DESC: OBSOLETE PART NO										
mm		4:1												
GENERAL TOLERANCES (UNLESS SPECIFIED)				EC NO: 617985		DRWN: AKUMAR19		2019/05/27		IPASS VERTICAL ZHD INTERNAL ASSEMBLY 1X1, 1X2, 1X4				
				CHK'D: GGA		2019/06/05								
4 PLACES ±				APPR: GGA		2019/06/05		PRODUCT CUSTOMER DRAWING						
3 PLACES ±				INITIAL REVISION:		DRWN: KLANG		2015/01/05		DOCUMENT NUMBER		DOC TYPE	DOC PART	REVISION
2 PLACES ± 0.13				APPR: MBANAKIS		2015/01/07		SD-170729-0001		PSD	000	A1		
1 PLACE ± 0.25				DRAFT WHERE APPLICABLE MUST REMAIN WITHIN DIMENSIONS		THIRD ANGLE PROJECTION		DRAWING SERIES		MATERIAL NUMBER		CUSTOMER		SHEET NUMBER
0 PLACES ±						C-SIZE 170729		SEE TABLE		GENERAL MARKET		6 OF 8		
ANGULAR TOL ± 2.0 °														



- NOTES:
1. RECOMMENDED DRILL SIZE FOR A 0.37 $\varnothing$  FINISHED PTH REFER TO APPLICATION SPECIFICATION AS-170729-0001
  2. MINIMUM RECOMMENDED SPACING IS 52.00MM
  3. MINIMUM RECOMMENDED PCB THICKNESS: 1.57MM
  4. CONNECTOR KEEP OUT AREA

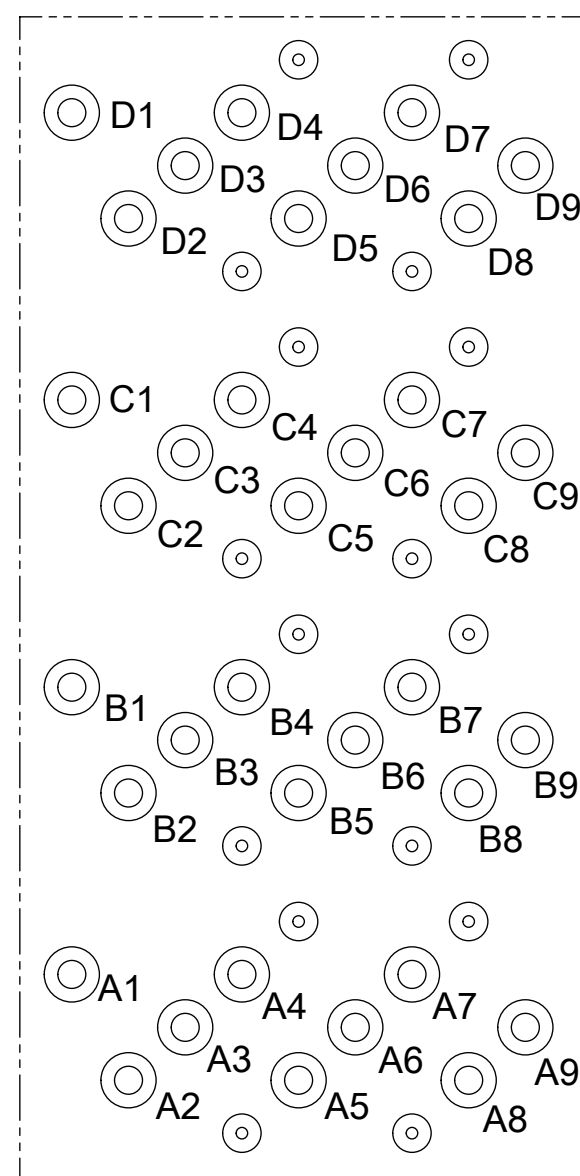
### 1X4 RECOMMENDED FOOTPRINT

THIS DRAWING CONTAINS INFORMATION THAT IS PROPRIETARY TO MOLEX ELECTRONIC TECHNOLOGIES, LLC AND SHOULD NOT BE USED WITHOUT WRITTEN PERMISSION													
DIMENSION UNITS		SCALE		CURRENT REV DESC: OBSOLETE PART NO									
mm		4:1		<b>molex</b> IPASS VERTICAL ZHD INTERNAL ASSEMBLY 1X1, 1X2, 1X4 PRODUCT CUSTOMER DRAWING									
GENERAL TOLERANCES (UNLESS SPECIFIED)										EC NO: 617985		2019/05/27	
4 PLACES		±	±							DRWN: AKUMAR19		2019/06/05	
3 PLACES		±	±							CHK'D: GGA		2019/06/05	
2 PLACES		± 0.13	±							APPR: GGA		2019/06/05	
1 PLACE		± 0.25	±	INITIAL REVISION:				DOCUMENT NUMBER					
0 PLACES		±	±	DRWN: KLANG		2015/01/05		SD-170729-0001					
ANGULAR TOL		± 2.0 °		APPR: MBANAKIS		2015/01/07		DOC TYPE DOC PART REVISION					
DRAFT WHERE APPLICABLE MUST REMAIN WITHIN DIMENSIONS				THIRD ANGLE PROJECTION		DRAWING		SHEET NUMBER					
				C-SIZE		170729		7 OF 8					
MATERIAL NUMBER		CUSTOMER		SEE TABLE GENERAL MARKET									
SD-170729-0001		GENERAL MARKET											



SEE DETAIL K

**RECOMMENDED KEEP OUT AREA FOR WAFER TERMINAL EXTRACTION TOOLING (REFER TO AS-170729-0001)**



**DETAIL K**  
CIRCUIT IDENTIFICATION  
(TYP EACH PORT)

THIS DRAWING CONTAINS INFORMATION THAT IS PROPRIETARY TO MOLEX ELECTRONIC TECHNOLOGIES, LLC AND SHOULD NOT BE USED WITHOUT WRITTEN PERMISSION									
DIMENSION UNITS		SCALE		CURRENT REV DESC: OBSOLETE PART NO					
mm		4:1							
GENERAL TOLERANCES (UNLESS SPECIFIED)				EC NO: 617985		2019/05/27		IPASS VERTICAL ZHD	
4 PLACES		±	±	DRWN: AKUMAR19		2019/06/05		INTERNAL ASSEMBLY 1X1, 1X2, 1X4	
3 PLACES		±	±	CHK'D: GGA		2019/06/05		PRODUCT CUSTOMER DRAWING	
2 PLACES		± 0.13	±	APPR: GGA		2019/06/05		DOCUMENT NUMBER	
1 PLACE		± 0.25	±	INITIAL REVISION:				DOC TYPE   DOC PART   REVISION	
0 PLACES		±	±	DRWN: KLANG		2015/01/05		SD-170729-0001	
ANGULAR TOL		± 2.0 °		APPR: MBANAKIS		2015/01/07		PSD 000 A1	
DRAFT WHERE APPLICABLE MUST REMAIN WITHIN DIMENSIONS				THIRD ANGLE PROJECTION		DRAWING		MATERIAL NUMBER	
						C-SIZE		CUSTOMER	
						SERIES		SHEET NUMBER	
						170729		SEE TABLE   GENERAL MARKET   8 OF 8	