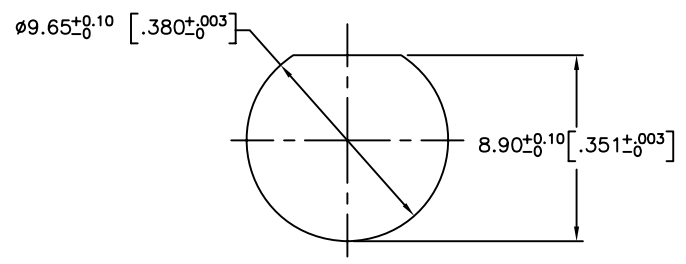
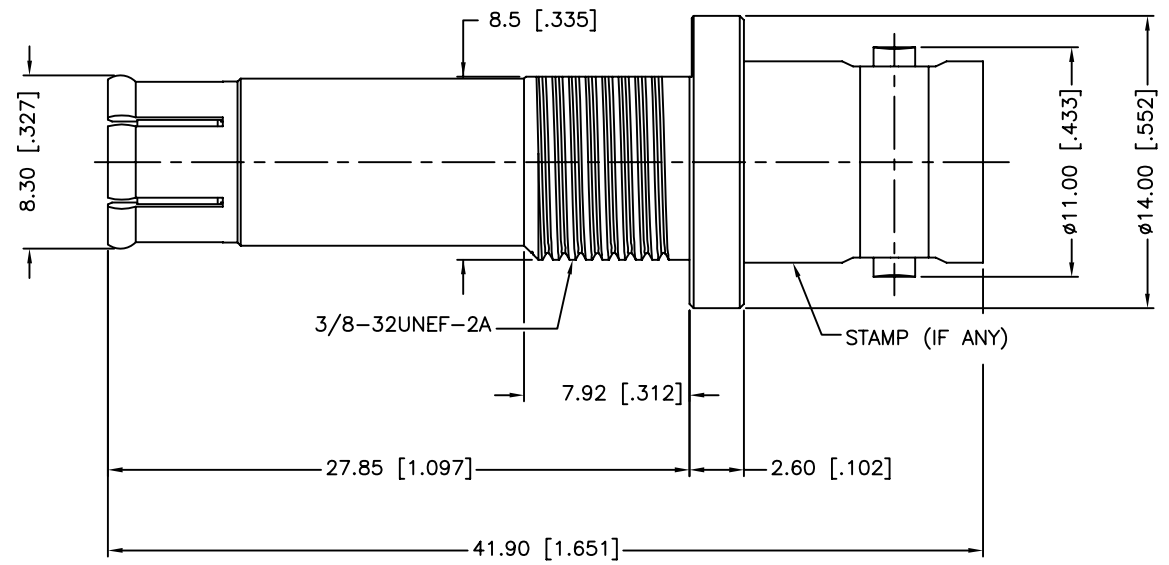
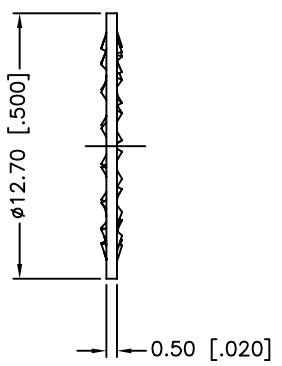
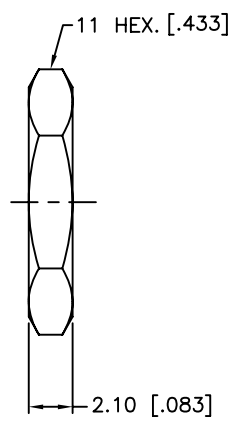


REV.	DATE	ECR NO.	DESCRIPTION
NC	09/24/09	XXXXXX	INITIAL RELEASE



RECOMMENDED MOUNTING HOLE



- 1. FREQUENCY RANGE: DC 0-3 GHZ
- 2. VSWR: 1.15, MAX.
- 3. MAX. PANEL THICKNESS=4.5 mm

7	HEX NUT	BRASS	NICKEL	1
6	LOCK WASHER	BRASS	NICKEL	1
5	RETAINER RING	BER. COPPER	NICKEL	1
4	INSULATOR	PTFE	NATURAL	1
3	CONTACT PIN	BER. COPPER	GOLD	1
2	LOCK RING	BRASS	NICKEL	1
1	BODY	BRASS	NICKEL	1
DESCRIPTION	MATERIAL	FINISH	QTY	

UNLESS OTHERWISE SPECIFIED DIMENSIONS ARE IN MILLIMETERS. DIMENSIONS IN [] ARE IN INCHES AND FOR CUSTOMER REFERENCE ONLY.

UNLESS OTHERWISE SPECIFIED TOLERANCES FOR MILLIMETERS ARE:
0.5 - 8mm ± 0.20mm
8 - 30mm ± 0.40mm
30 - 120mm ± 0.50mm

UNLESS OTHERWISE SPECIFIED TOLERANCES FOR INCHES ARE:
.020 - .315 ± 0.007"
.315 - 1.180 ± 0.015"
1.180 - 4.724 ± 0.020"

DO NOT SCALE DRAWING

APPROVALS	DATE
DRAWN M.ZHANG	09/24/09
CHECKED	
ISSUED	
SHEET 1 OF 1	
CAD FILE	C:/CONNEX/112769.DWG

Amphenol Connex

PART DESCRIPTION
BNC BULKHEAD JACK TO PUSH-ON PLUG ADAPTOR

PART NO.
112769

DWG. NO. 112769.DWG REV. NC SIZE A SCALE NA