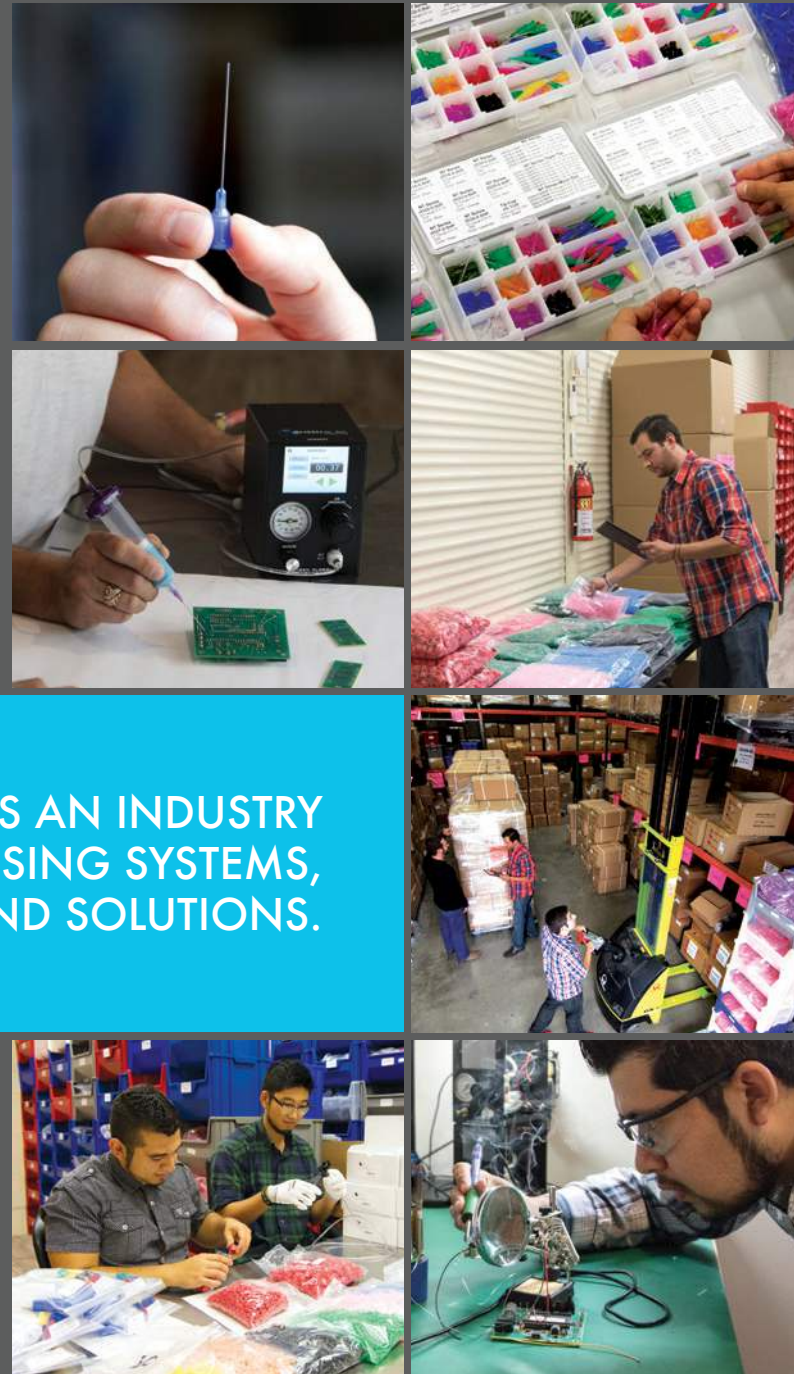




START DISPENSING



JENSEN GLOBAL IS AN INDUSTRY LEADER IN DISPENSING SYSTEMS, SUPPLIES AND SOLUTIONS.



TABLE OF CONTENTS

DISPENSING TIPS

NT Premium Series	4
IT Standard Series	5
Flexible Tips	6
Specialty Tips	7
ESD Premium Tips	8
Tip Suggestions	9

SYRINGES

Premium Air Barrel & Stopper Kits	10
Standard Air Barrel & Stopper Kits	11
Bulk Air Barrels & Stoppers	12
Manual Syringes	13
Syringe & Tip Covers	14
Syringe Specifications	15

BOTTLES

Bottle & Cap Kits	16
Luer Lock & Closed Caps	17
Bottles	17

EQUIPMENT

Touch Screen Shot Meter	18
Syringe Stands	18
Semi Automated Dispenser	19
Finger Switches	19
Analog & Manual Dispensers	20
Fluid Reservoirs	21
Foot Valves	22
Dispensers & Systems	23
Syringe Adapters	24
Valves	25
Dispensing Guns	26-27

ACCESSORIES

Cartridges & Nozzles	28
Static Mixers	28
Fittings	29
Tubing	29
Hardware	30
Kits	30



DISPENSING TIPS

Jensen Global offers high-quality dispensing tips to suit a wide range of material dispensing. Tip types include standard, angled, tapered, flexible, specialty and all-metal dispensing tips, which are available in various sizes.

PREMIUM NT SERIES TIPS

Manufactured using the highest quality standards and the tightest possible tolerances. The polished cannula and burr-free design provide the user accuracy and durability. With a polypropylene Luer Lock hub and 304 stainless steel cannula, our NT Series tips provide the smoothest flow for precise dispensing applications.



GAUGE	INCHES	OD	ID	OD	LENGTH: 1/4 INCH		LENGTH: 1/2 INCH		LENGTH: 1 INCH		LENGTH: 1 1/2 INCH	
					BOX (50)	BAG (1000)	BOX (50)	BAG (1000)	BOX (50)	BAG (1000)	BOX (50)	BAG (1000)
12	0.089	0.109	2.260	2.768	JG12-0.25HPX	JG12-0.25HP	JG12-0.5HPX	JG12-0.5HP	JG12-1.0HPX	JG12-1.0HP	JG12-1.5HPX	JG12-1.5HP
13	0.070	0.100	1.778	2.540	JG13-0.25HPX	JG13-0.25HP	JG13-0.5HPX	JG13-0.5HP	JG13-1.0HPX	JG13-1.0HP	JG13-1.5HPX	JG13-1.5HP
14	0.059	0.072	1.500	1.820	JG14-0.25HPX	JG14-0.25HP	JG14-0.5HPX	JG14-0.5HP	JG14-1.0HPX	JG14-1.0HP	JG14-1.5HPX	JG14-1.5HP
15	0.054	0.072	1.370	1.820	JG15-0.25HPX	JG15-0.25HP	JG15-0.5HPX	JG15-0.5HP	JG15-1.0HPX	JG15-1.0HP	JG15-1.5HPX	JG15-1.5HP
16	0.047	0.065	1.200	1.650	JG16-0.25HPX	JG16-0.25HP	JG16-0.5HPX	JG16-0.5HP	JG16-1.0HPX	JG16-1.0HP	JG16-1.5HPX	JG16-1.5HP
17	0.040	0.059	1.040	1.500	JG17-0.25HPX	JG17-0.25HP	JG17-0.5HPX	JG17-0.5HP	JG17-1.0HPX	JG17-1.0HP	JG17-1.5HPX	JG17-1.5HP
18	0.033	0.050	0.840	1.270	JG18-0.25HPX	JG18-0.25HP	JG18-0.5HPX	JG18-0.5HP	JG18-1.0HPX	JG18-1.0HP	JG18-1.5HPX	JG18-1.5HP
19	0.028	0.041	0.700	1.050	JG19-0.25HPX	JG19-0.25HP	JG19-0.5HPX	JG19-0.5HP	JG19-1.0HPX	JG19-1.0HP	JG19-1.5HPX	JG19-1.5HP
20	0.024	0.036	0.600	0.910	JG20-0.25HPX	JG20-0.25HP	JG20-0.5HPX	JG20-0.5HP	JG20-1.0HPX	JG20-1.0HP	JG20-1.5HPX	JG20-1.5HP
21	0.020	0.032	0.510	0.820	JG21-0.25HPX	JG21-0.25HP	JG21-0.5HPX	JG21-0.5HP	JG21-1.0HPX	JG21-1.0HP	JG21-1.5HPX	JG21-1.5HP
22	0.016	0.028	0.410	0.710	JG22-0.25HPX	JG22-0.25HP	JG22-0.5HPX	JG22-0.5HP	JG22-1.0HPX	JG22-1.0HP	JG22-1.5HPX	JG22-1.5HP
23	0.013	0.025	0.330	0.640	JG23-0.25HPX	JG23-0.25HP	JG23-0.5HPX	JG23-0.5HP	JG23-1.0HPX	JG23-1.0HP	JG23-1.5HPX	JG23-1.5HP
24	0.012	0.022	0.300	0.560	JG24-0.25HPX	JG24-0.25HP	JG24-0.5HPX	JG24-0.5HP	JG24-1.0HPX	JG24-1.0HP	JG24-1.5HPX	JG24-1.5HP
25	0.010	0.020	0.250	0.510	JG25-0.25HPX	JG25-0.25HP	JG25-0.5HPX	JG25-0.5HP	JG25-1.0HPX	JG25-1.0HP	JG25-1.5HPX	JG25-1.5HP
26	0.009	0.018	0.240	0.450	JG26-0.25HPX	JG26-0.25HP	JG26-0.5HPX	JG26-0.5HP	JG26-1.0HPX	JG26-1.0HP	JG26-1.5HPX	JG26-1.5HP
27	0.008	0.016	0.200	0.410	JG27-0.25HPX	JG27-0.25HP	JG27-0.5HPX	JG27-0.5HP	JG27-1.0HPX	JG27-1.0HP	JG27-1.5HPX	JG27-1.5HP
28	0.007	0.015	0.190	0.390	JG28-0.25HPX	JG28-0.25HP	JG28-0.5HPX	JG28-0.5HP	JG28-1.0HPX	JG28-1.0HP	JG28-1.5HPX	JG28-1.5HP
30	0.006	0.012	0.152	0.310	JG30-0.25HPX	JG30-0.25HP	JG30-0.5HPX	JG30-0.5HP	JG30-1.0HPX	JG30-1.0HP	N/A	N/A
32	0.004	0.010	0.100	0.260	JG32-0.25HPX	JG32-0.25HP	N/A	N/A	N/A	N/A	N/A	N/A
34	0.003	0.008	0.0	0.2	JG34-0.25HPX	JG34-0.25HP	N/A	N/A	N/A	N/A	N/A	N/A

PREMIUM NT ANGLED TIPS

Manufactured using the highest quality standards and are angled at 45 or 90 degrees. The bend is made at 3/16" (4.763 mm) from the tip for 0.5", at 1/4" (6.350 mm) for 1.0", and at 5/16" (7.948 mm) for 1.5" long needles. Additional lengths, custom angles and bags of 1000 of any of the below are also available.



GAUGE	IN	IN	MM	MM	LENGTH: 1/2 INCH 45° BEND		LENGTH: 1/2 INCH 90° BEND		LENGTH: 1 INCH 45° BEND		LENGTH: 1 INCH 90° BEND	
					BOX (50)	BOX (50)	BOX (50)	BOX (50)	BOX (50)	BOX (50)	BOX (50)	BOX (50)
12	0.089	0.109	2.260	2.768	JG12-0.5HPX-45	JG12-0.5HPX-90	JG12-1.0HPX-45	JG12-1.0HPX-90	JG12-1.5HPX-45	JG12-1.5HPX-90		
13	0.070	0.100	1.778	2.540	JG13-0.5HPX-45	JG13-0.5HPX-90	JG13-1.0HPX-45	JG13-1.0HPX-90	JG13-1.5HPX-45	JG13-1.5HPX-90		
14	0.059	0.072	1.500	1.802	JG14-0.5HPX-45	JG14-0.5HPX-90	JG14-1.0HPX-45	JG14-1.0HPX-90	JG14-1.5HPX-45	JG14-1.5HPX-90		
15	0.054	0.072	1.370	1.820	JG15-0.5HPX-45	JG15-0.5HPX-90	JG15-1.0HPX-45	JG15-1.0HPX-90	JG15-1.5HPX-45	JG15-1.5HPX-90		
16	0.047	0.065	1.200	1.650	JG16-0.5HPX-45	JG16-0.5HPX-90	JG16-1.0HPX-45	JG16-1.0HPX-90	JG16-1.5HPX-45	JG16-1.5HPX-90		
17	0.040	0.059	1.040	1.500	JG17-0.5HPX-45	JG17-0.5HPX-90	JG17-1.0HPX-45	JG17-1.0HPX-90	JG17-1.5HPX-45	JG17-1.5HPX-90		
18	0.033	0.050	0.840	1.270	JG18-0.5HPX-45	JG18-0.5HPX-90	JG18-1.0HPX-45	JG18-1.0HPX-90	JG18-1.5HPX-45	JG18-1.5HPX-90		
19	0.028	0.041	0.700	1.050	JG19-0.5HPX-45	JG19-0.5HPX-90	JG19-1.0HPX-45	JG19-1.0HPX-90	JG19-1.5HPX-45	JG19-1.5HPX-90		
20	0.024	0.036	0.600	0.910	JG20-0.5HPX-45	JG20-0.5HPX-90	JG20-1.0HPX-45	JG20-1.0HPX-90	JG20-1.5HPX-45	JG20-1.5HPX-90		
21	0.020	0.032	0.510	0.820	JG21-0.5HPX-45	JG21-0.5HPX-90	JG21-1.0HPX-45	JG21-1.0HPX-90	JG21-1.5HPX-45	JG21-1.5HPX-90		
22	0.016	0.028	0.410	0.710	JG22-0.5HPX-45	JG22-0.5HPX-90	JG22-1.0HPX-45	JG22-1.0HPX-90	JG22-1.5HPX-45	JG22-1.5HPX-90		
23	0.013	0.025	0.330	0.640	JG23-0.5HPX-45	JG23-0.5HPX-90	JG23-1.0HPX-45	JG23-1.0HPX-90	JG23-1.5HPX-45	JG23-1.5HPX-90		
24	0.012	0.022	0.300	0.560	JG24-0.5HPX-45	JG24-0.5HPX-90	JG24-1.0HPX-45	JG24-1.0HPX-90	JG24-1.5HPX-45	JG24-1.5HPX-90		
25	0.010	0.020	0.250	0.510	JG25-0.5HPX-45	JG25-0.5HPX-90	JG25-1.0HPX-45	JG25-1.0HPX-90	JG25-1.5HPX-45	JG25-1.5HPX-90		
26	0.009	0.018	0.240	0.450	JG26-0.5HPX-45	JG26-0.5HPX-90	JG26-1.0HPX-45	JG26-1.0HPX-90	JG26-1.5HPX-45	JG26-1.5HPX-90		
27	0.008	0.016	0.200	0.410	JG27-0.5HPX-45	JG27-0.5HPX-90	JG27-1.0HPX-45	JG27-1.0HPX-90	JG27-1.5HPX-45	JG27-1.5HPX-90		
28	0.007	0.015	0.190	0.390	JG28-0.5HPX-45	JG28-0.5HPX-90	JG28-1.0HPX-45	JG28-1.0HPX-90	JG28-1.5HPX-45	JG28-1.5HPX-90		
30	0.006	0.012	0.152	0.310	JG30-0.5HPX-45	JG30-0.5HPX-90	JG30-1.0HPX-45	JG30-1.0HPX-90	JG30-1.5HPX-45	JG30-1.5HPX-90		



DISPENSING TIPS

STANDARD IT SERIES TIPS

Tips feature a polypropylene Luer Lock hub with a UV-bonded 304 stainless steel cannula. This series is color coded based on the international standard.



GAUGE	INCHES	INCHES	MM	MM	LENGTH: 1/2 INCH		LENGTH: 1 INCH		LENGTH: 1 1/2 INCH		LENGTH: 2 INCH	
					BOX (50)	BAG (1000)	BOX (50)	BAG (1000)	BOX (50)	BAG (1000)	BOX (50)	BAG (1000)
14	0.069	0.083	1.753	2.108	JG14-0.5X	JG14-0.5	JG14-1.0X	JG14-1.0	JG14-1.5X	JG14-1.5	JG14-2.0X	JG14-2.0
15	0.059	0.072	1.499	1.829	JG15-0.5X	JG15-0.5	JG15-1.0X	JG15-1.0	JG15-1.5X	JG15-1.5	JG15-2.0X	JG15-2.0
16	0.053	0.065	1.346	1.651	JG16-0.5X	JG16-0.5	JG16-1.0X	JG16-1.0	JG16-1.5X	JG16-1.5	JG16-2.0X	JG16-2.0
17	0.048	0.058	1.219	1.473	JG17-0.5X	JG17-0.5	JG17-1.0X	JG17-1.0	JG17-1.5X	JG17-1.5	JG17-2.0X	JG17-2.0
18	0.038	0.049	0.965	1.245	JG18-0.5X	JG18-0.5	JG18-1.0X	JG18-1.0	JG18-1.5X	JG18-1.5	JG18-2.0X	JG18-2.0
19	0.033	0.043	0.835	1.092	JG19-0.5X	JG19-0.5	JG19-1.0X	JG19-1.0	JG19-1.5X	JG19-1.5	JG19-2.0X	JG19-2.0
20	0.025	0.036	0.635	0.914	JG20-0.5X	JG20-0.5	JG20-1.0X	JG20-1.0	JG20-1.5X	JG20-1.5	JG20-2.0X	JG20-2.0
21	0.022	0.033	0.559	0.838	JG21-0.5X	JG21-0.5	JG21-1.0X	JG21-1.0	JG21-1.5X	JG21-1.5	JG21-2.0X	JG21-2.0
22	0.020	0.028	0.508	0.711	JG22-0.5X	JG22-0.5	JG22-1.0X	JG22-1.0	JG22-1.5X	JG22-1.5	JG22-2.0X	JG22-2.0
23	0.016	0.025	0.406	0.635	JG23-0.5X	JG23-0.5	JG23-1.0X	JG23-1.0	JG23-1.5X	JG23-1.5	JG23-2.0X	JG23-2.0
24	0.015	0.022	0.381	0.559	JG24-0.5X	JG24-0.5	JG24-1.0X	JG24-1.0	JG24-1.5X	JG24-1.5	JG24-2.0X	JG24-2.0
25	0.012	0.020	0.305	0.508	JG25-0.5X	JG25-0.5	JG25-1.0X	JG25-1.0	JG25-1.5X	JG25-1.5	JG25-2.0X	JG25-2.0
26	0.011	0.019	0.279	0.483	JG26-0.5X	JG26-0.5	JG26-1.0X	JG26-1.0	JG26-1.5X	JG26-1.5	JG26-2.0X	JG26-2.0
27	0.009	0.016	0.229	0.406	JG27-0.5X	JG27-0.5	JG27-1.0X	JG27-1.0	JG27-1.5X	JG27-1.5	JG27-2.0X	JG27-2.0
30	0.006	0.012	0.152	0.305	JG30-0.5X	JG30-0.5	JG30-1.0X	JG30-1.0	N/A	N/A	N/A	N/A

STANDARD IT ANGLED TIPS

Tips feature a polypropylene Luer Lock hub with a UV-bonded 304 stainless steel cannula angled at 45 or 90 degrees. The bend is made at 3/16" (4.763 mm) from the tip for 0.5", at 1/4" (6.350 mm) for 1.0", and at 5/16" (7.948 mm) for 1.5" long tips. This series is color coded based on the international standard. Additional lengths, custom angles and bags of 1000 of any of the below are also available.



GAUGE	IN	IN	MM	MM	LENGTH: 1/2 INCH 45° BEND		LENGTH: 1/2 INCH 90° BEND		LENGTH: 1 INCH 45° BEND		LENGTH: 1 INCH 90° BEND	
					BOX (50)	BOX (50)	BOX (50)	BOX (50)	BOX (50)	BOX (50)		
14	0.069	0.083	1.753	2.108	JG14-0.5X-45	N/A	JG14-1.0X-45	JG14-1.0X-90	JG14-1.5X-45	JG14-1.5X-90		
15	0.059	0.072	1.498	1.828	JG15-0.5X-45	JG15-0.5X-90	JG15-1.0X-45	JG15-1.0X-90	JG15-1.5X-45	JG15-1.5X-90		
16	0.053	0.065	1.346	1.651	JG16-0.5X-45	JG16-0.5X-90	JG16-1.0X-45	JG16-1.0X-90	JG16-1.5X-45	JG16-1.5X-90		
17	0.048	0.058	1.219	1.473	JG17-0.5X-45	JG17-0.5X-90	JG17-1.0X-45	JG17-1.0X-90	JG17-1.5X-45	JG17-1.5X-90		
18	0.038	0.049	0.965	1.245	JG18-0.5X-45	JG18-0.5X-90	JG18-1.0X-45	JG18-1.0X-90	JG18-1.5X-45	JG18-1.5X-90		
19	0.033	0.043	0.835	1.092	JG19-0.5X-45	JG19-0.5X-90	JG19-1.0X-45	JG19-1.0X-90	JG19-1.5X-45	JG19-1.5X-90		
20	0.025	0.036	0.635	0.914	JG20-0.5X-45	JG20-0.5X-90	JG20-1.0X-45	JG20-1.0X-90	JG20-1.5X-45	JG20-1.5X-90		
21	0.022	0.033	0.559	0.838	JG21-0.5X-45	JG21-0.5X-90	JG21-1.0X-45	JG21-1.0X-90	JG21-1.5X-45	JG21-1.5X-90		
22	0.020	0.028	0.508	0.711	JG22-0.5X-45	JG22-0.5X-90	JG22-1.0X-45	JG22-1.0X-90	JG22-1.5X-45	JG22-1.5X-90		
23	0.016	0.025	0.406	0.635	JG23-0.5X-45	JG23-0.5X-90	JG23-1.0X-45	JG23-1.0X-90	JG23-1.5X-45	JG23-1.5X-90		
24	0.015	0.022	0.381	0.559	JG24-0.5X-45	JG24-0.5X-90	JG24-1.0X-45	JG24-1.0X-90	JG24-1.5X-45	JG24-1.5X-90		
25	0.012	0.020	0.305	0.508	JG25-0.5X-45	JG25-0.5X-90	JG25-1.0X-45	JG25-1.0X-90	JG25-1.5X-45	JG25-1.5X-90		
26	0.											

DISPENSING TIPS

Flexible tips are based off our standard style of dispensing tip, but include PTFE or polypropylene tubing rather than the traditional stainless steel cannula. These are ideal for applications that require scratch-free results or the ability to insert the tip into a curved or problematic area. They are also excellent when used with several types of adhesives like anaerobics or cyanoacrylates.

PTFE

Highly flexible PTFE dispensing tips offer a scratch-free dispensing solution designed for highly sensitive applications. The polytetrafluoroethylene composition works especially well with cyanoacrylates, anaerobics and other epoxies that tend to clog in a typical stainless steel cannula. The flexible tubing is bonded with a UV-cured adhesive to a polypropylene Luer Lock hub.



GAUGE	ID INCHES	OD INCHES	ID MM	OD MM	LENGTH: 1/2 INCH		LENGTH: 1 INCH		LENGTH: 1 1/2 INCH		LENGTH: 2 INCH	
					BOX (50)	BAG (1000)	BOX (50)	BAG (1000)	BOX (50)	BAG (1000)	BOX (50)	BAG (1000)
14	0.066	0.082	1.676	2.083	JG14-0.5TX	JG14-0.5T	JG14-1.0TX	JG14-1.0T	JG14-1.5TX	JG14-1.5T	JG14-2.0TX	JG14-2.0T
16	0.053	0.065	1.346	1.650	JG16-0.5TX	JG16-0.5T	JG16-1.0TX	JG16-1.0T	JG16-1.5TX	JG16-1.5T	JG16-2.0TX	JG16-2.0T
18	0.042	0.064	1.067	1.372	JG18-0.5TX	JG18-0.5T	JG18-1.0TX	JG18-1.0T	JG18-1.5TX	JG18-1.5T	JG18-2.0TX	JG18-2.0T
20	0.034	0.046	0.864	1.168	JG20-0.5TX	JG20-0.5T	JG20-1.0TX	JG20-1.0T	JG20-1.5TX	JG20-1.5T	JG20-2.0TX	JG20-2.0T
22	0.028	0.040	0.711	1.016	JG22-0.5TX	JG22-0.5T	JG22-1.0TX	JG22-1.0T	JG22-1.5TX	JG22-1.5T	JG22-2.0TX	JG22-2.0T
23	0.026	0.038	0.660	0.965	JG23-0.5TX	JG23-0.5T	JG23-1.0TX	JG23-1.0T	JG23-1.5TX	JG23-1.5T	JG23-2.0TX	JG23-2.0T
24	0.022	0.034	0.559	0.864	JG24-0.5TX	JG24-0.5T	JG24-1.0TX	JG24-1.0T	JG24-1.5TX	JG24-1.5T	JG24-2.0TX	JG24-2.0T
30	0.012	0.024	0.305	0.610	JG30-0.5TX	JG30-0.5T	JG30-1.0TX	JG30-1.0T	JG30-1.5TX	JG30-1.5T	JG30-2.0TX	JG30-2.0T

POLYPROPYLENE Manufactured with white polypropylene tubing and best used in applications that need scratch-free results or the ability to insert the dispensing tip into a curved area or problematic area. They can be cut to a customized length or cut to remove any curing.



GAUGE	ID INCHES	OD INCHES	ID MM	OD MM	LENGTH: 1/2 INCH		LENGTH: 1 INCH		LENGTH: 1 1/2 INCH	
					BOX (50)	BAG (1000)	BOX (50)	BAG (1000)	BOX (50)	BAG (1000)
14	0.061	0.079	1.550	2.030	JG14-0.5XPRO	JG14-0.5PRO	JG14-1.0XPRO	JG14-1.0PRO	JG14-1.5XPRO	JG14-1.5PRO
15	0.051	0.071	1.300	1.800	JG15-0.5XPRO	JG15-0.5PRO	JG15-1.0XPRO	JG15-1.0PRO	JG15-1.5XPRO	JG15-1.5PRO
18	0.033	0.053	0.840	1.350	JG18-0.5XPRO	JG18-0.5PRO	JG18-1.0XPRO	JG18-1.0PRO	JG18-1.5XPRO	JG18-1.5PRO
20	0.024	0.040	0.600	1.020	JG20-0.5XPRO	JG20-0.5PRO	JG20-1.0XPRO	JG20-1.0PRO	JG20-1.5XPRO	JG20-1.5PRO
21	0.190	0.038	0.483	0.965	JG21-0.5XPRO	JG21-0.5PRO	JG21-1.0XPRO	JG21-1.0PRO	JG21-1.5XPRO	JG21-1.5PRO
22	0.016	0.035	0.406	0.889	JG22-0.5XPRO	JG22-0.5PRO	JG22-1.0XPRO	JG22-1.0PRO	JG22-1.5XPRO	JG22-1.5PRO
25	0.013	0.032	0.320	0.810	JG25-0.5XPRO	JG25-0.5PRO	JG25-1.0XPRO	JG25-1.0PRO	JG25-1.5XPRO	JG25-1.5PRO

PTFE LINED

A unique custom tip that consists of a 304 stainless steel cannula and a PTFE insert. This specialty tip resists clogging of cyanoacrylates, anaerobics and other epoxies that tend to clog in a typical stainless steel cannula. This burr-free tip is best used for microdot application of low viscosity fluids.



GAUGE	ID INCHES	ID MM	LENGTH: 1/2 INCH		LENGTH: 1 INCH	
			BOX (50)	BAG (1000)	BOX (50)	BAG (1000)
18	0.034	0.087	JG18-0.5HPPTL	JG18-0.5HPTL	JG18-1.0HPPTL	JG18-1.0HPTL
21	0.026	0.060	JG21-0.5HPPTL	JG21-0.5HPTL	JG21-1.0HPPTL	JG21-1.0HPTL
25	0.011	0.028	JG25-0.5HPPTL	JG25-0.5HPTL	JG25-1.0HPPTL	JG25-1.0HPTL

BRUSH TIPS

Brush tips are designed to spread material with a blunt-tipped needle located inside of the brush. The hub is Luer Lock and can be applied to any syringe.



GAUGE	PART #	COLOR / TEXTURE	QTY
14	JG14-HPBT	White / Softer	1
14	JG14-HPBT-B	Black / Stiffer	1
18	JG18-HPBT	White / Softer	1
18	JG18-HPBT-B	Black / Stiffer	1

DOSING TIP

Adhesive dosing tips provide extremely fine control over manual dispensing application. They can be cut and disposed of easily with each use.



TYPE	PART #	QTY
1	JGDS1	1000
2	JGDS2	1000
3	JGDS3	1000
4	JGDS4	1000
PK	JGDSPK	1000

DISPENSING TIPS

EAR STYLE

An alternative to the double-helix Luer Lock style dispensing tips, the ear style also locks the hub into place using the wings at the opening. White epoxy is used to bond the cannula to the hub. This style of dispensing tip is only offered in bags of 1000.



GAUGE	ID INCHES	OD INCHES	ID MM	OD MM	LENGTH: 1/2 INCH	LENGTH: 1 INCH	LENGTH: 1 1/2 INCH
					BAG (1000)	BAG (1000)	BAG (1000)
14	0.072	0.083	1.840	2.100	JG14-0.5EH	JG14-1.0EH	JG14-1.5EH
15	0.061	0.071	1.540	1.800	JG15-0.5EH	JG15-1.0EH	JG15-1.5EH
16	0.054	0.064	1.370	1.630	JG16-0.5EH	JG16-1.0EH	JG16-1.5EH
17	0.045	0.055	1.140	1.400	JG17-0.5EH	JG17-1.0EH	JG17-1.5EH
18	0.040	0.050	1.010	1.270	JG18-0.5EH	JG18-1.0EH	JG18-1.5EH
19	0.033	0.043	0.840	1.100	JG19-0.5EH	JG19-1.0EH	JG19-1.5EH
20	0.025	0.036	0.640	0.910	JG20-0.5EH	JG20-1.0EH	JG20-1.5EH
21	0.022	0.032	0.640	0.810	JG21-0.5EH	JG21-1.0EH	JG21-1.5EH
22	0.018	0.028	0.460	0.710	JG22-0.5EH	JG22-1.0EH	JG22-1.5EH
23	0.015	0.025	0.390	0.630	JG23-0.5EH	JG23-1.0EH	JG23-1.5EH
24	0.013	0.022	0.340	0.560	JG24-0.5EH	JG24-1.0EH	JG24-1.5EH
25	0.011	0.020	0.290	0.510	JG25-0.5EH	JG25-1.0EH	JG25-1.5EH
26	0.010	0.018	0.250	0.450	JG26-0.5EH	JG26-1.0EH	JG26-1.5EH
27	0.009	0.016	0.230	0.410	JG27-0.5EH	JG27-1.0EH	JG27-1.5EH

ALL-METAL TIPS All-metal tips are manufactured with nickel plated hubs and 304 stainless steel cannulas. They are sold in boxes of 12 and made to order, so additional lead-time may be required.



GAUGE	ID INCHES	OD INCHES	ID MM	OD MM	LENGTH: 1/2 INCH	LENGTH: 1 INCH	LENGTH: 1 1/2 INCH
					BOX (12)	BOX (12)	BOX (12)
14	0.063	0.082	1.600	2.083	JG14-0.5MDZ	JG14-1.0MDZ	JG14-1.5MDZ
15	0.054	0.072	1.372	1.829	JG15-0.5MDZ	JG15-1.0MDZ	JG15-1.5MDZ
16	0.047	0.065	1.194	1.651	JG16-0.5MDZ	JG16-1.0MDZ	JG16-1.5MDZ
17	0.041	0.059	1.041	1.499	JG17-0.5MDZ	JG17-1.0MDZ	JG17-1.5MDZ
18	0.033	0.050	0.838	1.270	JG18-0.5MDZ	JG18-1.0MDZ	JG18-1.5MDZ
19	0.028	0.041	0.711	1.041	JG19-0.5MDZ	JG19-1.0MDZ	JG19-1.5MDZ
20	0.024	0.036	0.610	0.914	JG20-0.5MDZ	JG20-1.0MDZ	JG20-1.5MDZ
21	0.020	0.032	0.508	0.813	JG21-0.5MDZ	JG21-1.0MDZ	JG21-1.5MDZ
22	0.016	0.028	0.406	0.711	JG22-0.5MDZ	JG22-1.0MDZ	JG22-1.5MDZ
23	0.013	0.025	0.330	0.635	JG23-0.5MDZ	JG23-1.0MDZ	JG23-1.5MDZ
24	0.012	0.022	0.305	0.559	JG24-0.5MDZ	JG24-1.0MDZ	JG24-1.5MDZ
25	0.010	0.020	0.254	0.508	JG25-0.5MDZ	JG25-1.0MDZ	JG25-1.5MDZ
26	0.009	0.018	0.229	0.457	JG26-0.5MDZ	JG26-1.0MDZ	JG26-1.5MDZ
27	0.008	0.016	0.203	0.406	JG27-0.5MDZ	JG27-1.0MDZ	JG27-1.5MDZ
30	0.006	0.012	0.152	0.305	JG30-0.5MDZ	JG30-1.0MDZ	JG30-1.5MDZ

CONICAL TIPS

Metal conical tips are a great choice for a precise application. They are reusable and designed to reduce back pressure, clogging, dripping, promote optimal flow rate, and minimize air entrapment.



GAUGE	ID-MM	ID-INCHES	QTY	LENGTH	SKU
19	0.700	0.0275	1	23.18 MM	JG19-MCT
21	0.500	0.0196	1	23.18 MM	JG21-MCT
21.5	0.450	0.0177	1	23.18 MM	JG21.5-MCT
22	0.400	0.0157	1	23.18 MM	JG22-MCT
24	0.300	0.0118	1	23.18 MM	JG24-MCT
25	0.250	0.0090	1	23.18 MM	JG25-MCT
27	0.200	0.0080	1	23.18 MM	JG27-MCT
30	0.150	0.0060	1	23.18 MM	JG30-MCT
32	0.100	0.0040	1	23.18 MM	JG32-MCT



DISPENSING TIPS

ESD safe dispensing tips eliminate the danger of high charges generated by conventional dispensing needles. These premium tips are offered in straight, angled, and tapered styles. All ESD tips are NT Series and due to the ESD additive all hubs are black. Available in boxes of 50 or bags of 1000. Please contact us for additional lengths and gauge sizes.

PREMIUM ESD NT TIPS

Manufactured using the highest quality standards and the tightest possible tolerances. The polished cannula and burr-free design provide the user accuracy and durability.

GAUGE	ID INCHES	OD INCHES	ID MM	OD MM	LENGTH: 1/4 INCH		LENGTH: 1/2 INCH		LENGTH: 1 INCH	
					BOX (50)	BAG (1000)	BOX (50)	BAG (1000)	BOX (50)	BAG (1000)
12	0.089	0.109	2.260	2.768	JG12-0.25HPX-ESD	JG12-0.25HPX-ESD	JG12-0.5HPX-ESD	JG12-0.5HPX-ESD	JG12-1.0HPX-ESD	JG12-1.0HPX-ESD
13	0.070	0.100	1.778	2.540	JG13-0.25HPX-ESD	JG13-0.25HPX-ESD	JG13-0.5HPX-ESD	JG13-0.5HPX-ESD	JG13-1.0HPX-ESD	JG13-1.0HPX-ESD
14	0.059	0.072	1.500	1.820	JG14-0.25HPX-ESD	JG14-0.25HPX-ESD	JG14-0.5HPX-ESD	JG14-0.5HPX-ESD	JG14-1.0HPX-ESD	JG14-1.0HPX-ESD
15	0.054	0.072	1.370	1.820	JG15-0.25HPX-ESD	JG15-0.25HPX-ESD	JG15-0.5HPX-ESD	JG15-0.5HPX-ESD	JG15-1.0HPX-ESD	JG15-1.0HPX-ESD
16	0.047	0.065	1.200	1.650	JG16-0.25HPX-ESD	JG16-0.25HPX-ESD	JG16-0.5HPX-ESD	JG16-0.5HPX-ESD	JG16-1.0HPX-ESD	JG16-1.0HPX-ESD
17	0.040	0.059	1.040	1.500	JG17-0.25HPX-ESD	JG17-0.25HPX-ESD	JG17-0.5HPX-ESD	JG17-0.5HPX-ESD	JG17-1.0HPX-ESD	JG17-1.0HPX-ESD
18	0.033	0.050	0.840	1.270	JG18-0.25HPX-ESD	JG18-0.25HPX-ESD	JG18-0.5HPX-ESD	JG18-0.5HPX-ESD	JG18-1.0HPX-ESD	JG18-1.0HPX-ESD
19	0.028	0.041	0.700	1.050	JG19-0.25HPX-ESD	JG19-0.25HPX-ESD	JG19-0.5HPX-ESD	JG19-0.5HPX-ESD	JG19-1.0HPX-ESD	JG19-1.0HPX-ESD
20	0.024	0.036	0.600	0.910	JG20-0.25HPX-ESD	JG20-0.25HPX-ESD	JG20-0.5HPX-ESD	JG20-0.5HPX-ESD	JG20-1.0HPX-ESD	JG20-1.0HPX-ESD
21	0.020	0.032	0.510	0.820	JG21-0.25HPX-ESD	JG21-0.25HPX-ESD	JG21-0.5HPX-ESD	JG21-0.5HPX-ESD	JG21-1.0HPX-ESD	JG21-1.0HPX-ESD
22	0.016	0.028	0.410	0.710	JG22-0.25HPX-ESD	JG22-0.25HPX-ESD	JG22-0.5HPX-ESD	JG22-0.5HPX-ESD	JG22-1.0HPX-ESD	JG22-1.0HPX-ESD
23	0.013	0.025	0.330	0.640	JG23-0.25HPX-ESD	JG23-0.25HPX-ESD	JG23-0.5HPX-ESD	JG23-0.5HPX-ESD	JG23-1.0HPX-ESD	JG23-1.0HPX-ESD
24	0.012	0.022	0.300	0.560	JG24-0.25HPX-ESD	JG24-0.25HPX-ESD	JG24-0.5HPX-ESD	JG24-0.5HPX-ESD	JG24-1.0HPX-ESD	JG24-1.0HPX-ESD
25	0.010	0.020	0.250	0.510	JG25-0.25HPX-ESD	JG25-0.25HPX-ESD	JG25-0.5HPX-ESD	JG25-0.5HPX-ESD	JG25-1.0HPX-ESD	JG25-1.0HPX-ESD
26	0.009	0.018	0.240	0.450	JG26-0.25HPX-ESD	JG26-0.25HPX-ESD	JG26-0.5HPX-ESD	JG26-0.5HPX-ESD	JG26-1.0HPX-ESD	JG26-1.0HPX-ESD
27	0.008	0.016	0.200	0.410	JG27-0.25HPX-ESD	JG27-0.25HPX-ESD	JG27-0.5HPX-ESD	JG27-0.5HPX-ESD	JG27-1.0HPX-ESD	JG27-1.0HPX-ESD
28	0.007	0.015	0.190	0.390	JG28-0.25HPX-ESD	JG28-0.25HPX-ESD	JG28-0.5HPX-ESD	JG28-0.5HPX-ESD	JG28-1.0HPX-ESD	JG28-1.0HPX-ESD
30	0.006	0.012	0.152	0.310	JG30-0.25HPX-ESD	JG30-0.25HPX-ESD	JG30-0.5HPX-ESD	JG30-0.5HPX-ESD	JG30-1.0HPX-ESD	JG30-1.0HPX-ESD



PREMIUM ESD ANGLED TIPS

Manufactured using the highest quality standards and are angled at 45 or 90 degrees. The bend is made at 3/16" (4.763 mm) from the tip for 0.5", at 1/4" (6.350 mm) for 1.0", and at 5/16" (7.948 mm) for 1.5" long needles.

GAUGE	ID IN	OD IN	ID MM	OD MM	LENGTH: 1/2 INCH	LENGTH: 1/2 INCH	LENGTH: 1 INCH	LENGTH: 1 INCH	LENGTH: 1 1/2 INCH	LENGTH: 1 1/2 INCH
					45° BEND	45° BEND	90° BEND	90° BEND	45° BEND	90° BEND
14	0.059	0.072	1.500	1.802	JG14-0.5HPX-45-ESD	JG14-0.5HPX-90-ESD	JG14-1.0HPX-45-ESD	JG14-1.0HPX-90-ESD	JG14-1.5HPX-45-ESD	JG14-1.5HPX-90-ESD
15	0.054	0.072	1.370	1.820	JG15-0.5HPX-45-ESD	JG15-0.5HPX-90-ESD	JG15-1.0HPX-45-ESD	JG15-1.0HPX-90-ESD	JG15-1.5HPX-45-ESD	JG15-1.5HPX-90-ESD
16	0.047	0.065	1.200	1.650	JG16-0.5HPX-45-ESD	JG16-0.5HPX-90-ESD	JG16-1.0HPX-45-ESD	JG16-1.0HPX-90-ESD	JG16-1.5HPX-45-ESD	JG16-1.5HPX-90-ESD
17	0.040	0.059	1.040	1.500	JG17-0.5HPX-45-ESD	JG17-0.5HPX-90-ESD	JG17-1.0HPX-45-ESD	JG17-1.0HPX-90-ESD	JG17-1.5HPX-45-ESD	JG17-1.5HPX-90-ESD
18	0.033	0.050	0.840	1.270	JG18-0.5HPX-45-ESD	JG18-0.5HPX-90-ESD	JG18-1.0HPX-45-ESD	JG18-1.0HPX-90-ESD	JG18-1.5HPX-45-ESD	JG18-1.5HPX-90-ESD
19	0.028	0.041	0.700	1.050	JG19-0.5HPX-45-ESD	JG19-0.5HPX-90-ESD	JG19-1.0HPX-45-ESD	JG19-1.0HPX-90-ESD	JG19-1.5HPX-45-ESD	JG19-1.5HPX-90-ESD
20	0.024	0.036	0.600	0.910	JG20-0.5HPX-45-ESD	JG20-0.5HPX-90-ESD	JG20-1.0HPX-45-ESD	JG20-1.0HPX-90-ESD	JG20-1.5HPX-45-ESD	JG20-1.5HPX-90-ESD
21	0.020	0.032	0.510	0.820	JG21-0.5HPX-45-ESD	JG21-0.5HPX-90-ESD	JG21-1.0HPX-45-ESD	JG21-1.0HPX-90-ESD	JG21-1.5HPX-45-ESD	JG21-1.5HPX-90-ESD
22	0.016	0.028	0.410	0.710	JG22-0.5HPX-45-ESD	JG22-0.5HPX-90-ESD	JG22-1.0HPX-45-ESD	JG22-1.0HPX-90-ESD	JG22-1.5HPX-45-ESD	JG22-1.5HPX-90-ESD
23	0.013	0.025	0.330	0.640	JG23-0.5HPX-45-ESD	JG23-0.5HPX-90-ESD	JG23-1.0HPX-45-ESD	JG23-1.0HPX-90-ESD	JG23-1.5HPX-45-ESD	JG23-1.5HPX-90-ESD
24	0.012	0.022	0.300	0.560	JG24-0.5HPX-45-ESD	JG24-0.5HPX-90-ESD	JG24-1.0HPX-45-ESD	JG24-1.0HPX-90-ESD	JG24-1.5HPX-45-ESD	JG24-1.5HPX-90-ESD
25	0.010	0.020	0.250	0.510	JG25-0.5HPX-45-ESD	JG25-0.5HPX-90-ESD	JG25-1.0HPX-45-ESD	JG25-1.0HPX-90-ESD	JG25-1.5HPX-45-ESD	JG25-1.5HPX-90-ESD
26	0.009	0.018	0.240	0.450	JG26-0.5HPX-45-ESD	JG26-0.5HPX-90-ESD	JG26-1.0HPX-45-ESD	JG26-1.0HPX-90-ESD	JG26-1.5HPX-45-ESD	JG26-1.5HPX-90-ESD
27	0.008	0.016	0.200	0.410	JG27-0.5HPX-45-ESD	JG27-0.5HPX-90-ESD	JG27-1.0HPX-45-ESD	JG27-1.0HPX-90-ESD	JG27-1.5HPX-45-ESD	JG27-1.5HPX-90-ESD
28	0.007	0.015	0.190	0.390	JG28-0.5HPX-45-ESD	JG28-0.5HPX-90-ESD	JG28-1.0HPX-45-ESD	JG28-1.0HPX-90-ESD	JG28-1.5HPX-45-ESD	JG28-1.5HPX-90-ESD
30	0.006	0.012	0.152	0.310	JG30-0.5HPX-45-ESD	JG30-0.5HPX-90-ESD	JG30-1.0HPX-45-ESD	JG30-1.0HPX-90-ESD	JG30-1.5HPX-45-ESD	JG30-1.5HPX-90-ESD



PREMIUM ESD TAPERED TIPS

Tapered tips have an all-plastic tapered design to reduce backpressure and is ideal for medium to high viscosity materials. The tips contain a UV-resistant and offer scratchfree protection, ideal when working with sensitive parts.

GAUGE	INCHES	MM	BOX (50)	BAG (1000)
14	0.060	1.520	JG14-1.25HPPTX-ESD	JG14-1.25HPPT-ESD
16	0.047	1.200	JG16-1.25HPPTX-ESD	JG16-1.25HPPT-ESD
18	0.033	0.840	JG18-1.25HPPTX-ESD	JG18-1.25HPPT-ESD
20	0.025	0.630	JG20-1.25HPPTX-ESD	JG20-1.25HPPT-ESD
22	0.017	0.420	JG22-1.25HPPTX-ESD	JG22-1.25HPPT-ESD
25	0.011	0.280	JG25-1.25HPPTX-ESD	JG25-1.25HPPT-ESD
27	0.008	0.203	JG27-1.25HPPTX-ESD	JG27-1.25HPPT-ESD



TIP SUGGESTIONS

Jensen Global offers dispensing tips for all types of material, so finding the right one for your application is important. For thicker materials, you will want a larger opening and possibly a tapered tip. For CA glue and other thin adhesives, our PTFE and Polypropylene tips would be a better fit as they are flexible and will not clog as easily. Standard dispensing tips (with stainless steel cannula) are still the most widely used due to cost and the wide applications they cover. For additional recommendations contact one of our Product Specialists with the Live Chat feature on our site or by calling us.

KEY	
Recommended	✓
Acceptable	−
Not Recommended	✗

APPLICATIONS	TAPERED	STAINLESS STEEL	PTFE - LINED	FLEXIBLE
Particle-Filled Pastes	✓	✓	−	✗
Easily Scratched Substrates	✓	−	✓	✓
Low Viscosity Fluids	✗	✓	✓	✓
Microdot Deposits	✗	✓	−	✓
Fluid is Reactive to Metal	✓	✗	✓	✓
Fast-Curing Glues	✓	−	✓	✓
Beading/Stripping	✓	✓	✓	−
Spreading/Smearing	✓	−	✓	−
Depositing in Recesses	−	✓	✓	−
Adhesives	✓	✓	✓	✓
UV-Cure Adhesives	✓	−	−	✗
Light-Cure Adhesives	✓	−	−	✗
Epoxies	✓	✓	✓	✗
Silver Epoxy	✗	−	✗	✗
Gel Cyanoacrylates	✓	−	✓	−
Cyanoacrylates	✓	−	✓	✓
Conformal Coatings	✓	−	−	✗
Greases	✓	✓	✓	✗
Oils	✓	✓	✓	−
Paints	✓	−	−	✗
Sealants	✓	✓	−	✗
Solder Paste/Braze Pastes	✗	✓	✓	✓
Solder Masks	✓	−	✓	−

GAUGE COLOR CHART

GAUGE	NT PREMIUM	IT SERIES
12	Blue	N/A
13	Red	N/A
14	Olive	Olive
15	Brown	Orange
16	Gray	Purple
17	White	White
18	Green	Pink
19	Black	Brown
20	Pink	Yellow
21	Purple	Green
22	Blue	Black
23	Orange	Sky Blue
24	Light Blue	Red
25	Red	Blue
26	Peach	Cream
27	Clear	Gray
28	Light Gray	N/A
30	Lavender	Lavender
32	Yellow	N/A
34	Light Green	N/A

PACKAGING OPTIONS FOR DISPENSING TIPS

Dispensing tips are typically sold in boxes which contain 50 tips each. We also have bulk quantities of dispensing tips that are packaged in sealed plastic bags of 1000. Tips that are 1.5" or longer require additional packaging and may come in bags of 500 or 250.





AIR SYRINGE KITS

Premium air syringe barrels are manufactured with the highest quality standards for the best performance, while reducing material waste, and providing ergonomic relief. A syringe adapter connects the shot meter or foot valve with an air syringe and pressurizes the stopper to precisely dispense material. Most customers typically use these barrels with a white polyethylene stopper for their dispensing applications. However, several other options are available which include an orange straight-wall stopper ideal to prevent unintended stopper movement, a red tight fit stopper ideal for low viscosity materials, or a tan stopper designed specifically for materials containing air pockets. UV-blocking air barrels (amber or black tint) are also available. To include end caps and tip caps with your kit please add "K" to the end of the part number.

PREMIUM CLEAR BARREL & STOPPER



SIZE	WHITE PE	ORANGE STRAIGHT WALL	RED TIGHT FIT	TAN	QTY / BAG
10 cc	JG10A-30HP	JG10A-30HPO	JG10A-30HPR	JG10A-30HPT	30
30 cc	JG30A-20HP	JG30A-20HPO	JG30A-20HPR	JG30A-20HPT	20
50 cc	JG50A-15HP	JG50A-15HPO	JG50A-15HPR	JG50A-15HPT	15

PREMIUM UV BLACK BARREL & STOPPER



SIZE	WHITE PE	ORANGE STRAIGHT WALL	RED TIGHT FIT	TAN	QTY / BAG
10 cc	JG10A-30-HPUVB	JG10A-30-HPO-UVB	JG10A-30-HPR-UVB	JG10A-30-HPT-UVB	30
30 cc	JG30A-20-HPUVB	JG30A-20-HPO-UVB	JG30A-20-HPR-UVB	JG30A-20-HPT-UVB	20
50 cc	JG50A-15-HPUVB	JG50A-15-HPO-UVB	JG50A-15-HPR-UVB	JG50A-15-HPT-UVB	15

PREMIUM UV AMBER BARREL & STOPPER



SIZE	WHITE PE	ORANGE STRAIGHT WALL	RED TIGHT FIT	TAN	QTY / BAG
10 cc	JG10A-30-HPUVA	JG10A-30-HPO-UVA	JG10A-30-HPR-UVA	JG10A-30-HPT-UVA	30
30 cc	JG30A-20-HPUVA	JG30A-20-HPO-UVA	JG30A-20-HPR-UVA	JG30A-20-HPT-UVA	20
50 cc	JG50A-15-HPUVA	JG50A-15-HPO-UVA	JG50A-15-HPR-UVA	JG50A-15-HPT-UVA	15

PACKAGING FOR AIR SYRINGE KITS



STOPPER		DESCRIPTION
Premium White PE		Polyethylene stopper ideal for common applications for low to medium viscosity
Premium Orange Straight Wall		Polyethylene stopper ideal to prevent unintended stopper movement
Premium Red Tight Fit		Polyethylene stopper ideal for tight fit for low viscosity
Premium Tan		Polyethylene stopper ideal for material that contains air pockets



AIR SYRINGE KITS

Air syringe barrels are manufactured with a heavy flange and are designed to withstand pressure. A syringe adapter connects the shot meter or foot valve with an air syringe and pressurizes the stopper to precisely dispense material. We typically package these with a white polyethylene stopper for drip-free dispensing, however several other options are available. These options include a red straight-wall stopper for high viscosity material, a red thermal stopper for low viscosity materials, or a blue plastic stopper designed specifically to reduce backpressure when dispensing cyanoacrylates (CA). UV-blocking air barrels (amber or black tint) are also available. To include end caps and tip caps with your kit please add "K" to the end of the part number.

STANDARD BARREL & STOPPER



SIZE	WHITE PE	RED THERMAL	RED STRAIGHT WALL	BLUE CA	QTY / BAG
3 cc	JG3A-50	JG3A-50W	JG3A-50GBR	JG3A-50GC	50
5 cc	JG5A-40	JG5A-40W	JG5A-40GBR	JG5A-40GC	40
10 cc	JG10A-30	JG10A-30W	JG10A-30GBR	JG10A-30GC	30
30 cc	JG30A-20	JG30A-20W	JG30A-20GBR	JG30A-20GC	20
50 cc	JG50A-15	JG50A-15W	JG50A-15GBR	JG50A-15GC	15

STANDARD UV BLACK BARREL & STOPPER



SIZE	WHITE PE	RED THERMAL	RED STRAIGHT WALL	BLUE CA	QTY / BAG
3 cc	JG3A-50-UVB	JG3A-50-UVB-W	JG3A-50-UVB-GBR	JG3A-50-UVB-GC	50
5 cc	JG5A-40-UVB	JG5A-40-UVB-W	JG5A-40-UVB-GBR	JG5A-40-UVB-GC	40
10 cc	JG10A-30-UVB	JG10A-30-UVB-W	JG10A-30-UVB-GBR	JG10A-30-UVB-GC	30
30 cc	JG30A-20-UVB	JG30A-20-UVB-W	JG30A-20-UVB-GBR	JG30A-20-UVB-GC	20
50 cc	JG50A-15-UVB	JG50A-15-UVB-W	JG50A-15-UVB-GBR	JG50A-15-UVB-GC	15

STANDARD UV AMBER BARREL & STOPPER



SIZE	WHITE PE	RED THERMAL	RED STRAIGHT WALL	BLUE CA	QTY / BAG
3 cc	JG3A-50-UVA	JG3A-50-UVA-W	JG3A-50-UVA-GBR	JG3A-50-UVA-GC	50
5 cc	JG5A-40-UVA	JG5A-40-UVA-W	JG5A-40-UVA-GBR	JG5A-40-UVA-GC	40
10 cc	JG10A-30-UVA	JG10A-30-UVA-W	JG10A-30-UVA-GBR	JG10A-30-UVA-GC	30
30 cc	JG30A-20-UVA	JG30A-20-UVA-W	JG30A-20-UVA-GBR	JG30A-20-UVA-GC	20
50 cc	JG50A-15-UVA	JG50A-15-UVA-W	JG50A-15-UVA-GBR	JG50A-15-UVA-GC	15

PACKAGING FOR AIR SYRINGE KITS



STOPPER		DESCRIPTION
White PE		Polyethylene stopper ideal for low to medium viscosity
Red Thermal		Thermal rubber stopper ideal for low to medium viscosity
Red Straight Wall		Polyethylene stopper ideal for high viscosity
Blue Cyanoacrylate		Polyethylene stopper designed for cyanoacrylate adhesives



AIR SYRINGES

PREMIUM BULK BARRELS



Premium barrels are manufactured with the highest quality standards for the best performance, reduced material waste, and provide ergonomic relief. For syringe specifications, including length, ID, OD and flange, see page 15 of this catalog. Bulk barrels are for any quantity that exceed 100 pieces.

SIZE	CLEAR	UV BLACK	UV AMBER	QTY PER CASE
10 cc	JG10A-BLL-HP	JG10A-BLL-HP-UVB	JG10A-BLL-HP-UVA	1500
30 cc	JG30A-BLL-HP	JG30A-BLL-HP-UVB	JG30A-BLL-HP-UVA	500
50 cc	JG50A-BLL-HP	JG50A-BLL-HP-UVB	JG50A-BLL-HP-UVA	500

PREMIUM BULK STOPPERS



Premium stoppers are available in 4 different options including white PE, orange straight wall, red tight fit, and tan. For general use, our white polyethylene stopper is most common. The orange stopper is best to prevent unintended stopper movement, the red stopper is ideal for low viscosity and the tan is best for material that contains air pockets. Bulk stoppers are for any quantity that exceed 100 pieces.

SIZE	WHITE PE	ORANGE STRAIGHT WALL	RED TIGHT FIT	TAN
10 cc	JG10A-G-HP	JG10A-GO-HP	JG10A-GR-HP	JG10A-GT-HP
30/50 cc	JG30A-G-HP	JG30A-GO-HP	JG30A-GR-HP	JG30A-GT-HP

STANDARD BULK BARRELS



Syringe barrels are manufactured with a heavy flange, custom designed for air dispensing. For syringe specifications, including length, ID, OD and flange, see page 15 of this catalog. Bulk barrels are for any quantity that exceed 100 pieces.

SIZE	CLEAR	UV BLACK	UV AMBER	ESD	QTY PER CASE
3 cc	JG3A-BLL	JG3A-BLL-UVB	JG3A-BLL-UVA	JG3A-BLL-ESD	4000
5 cc	JG5A-BLL	JG5A-BLL-UVB	JG5A-BLL-UVA	JG5A-BLL-ESD	3000
10 cc	JG10A-BLL	JG10A-BLL-UVB	JG10A-BLL-UVA	JG10A-BLL-ESD	1500
30 cc	JG30A-BLL	JG30A-BLL-UVB	JG30A-BLL-UVA	JG30A-BLL-ESD	500
50 cc	JG50A-BLL	JG50A-BLL-UVB	JG50A-BLL-UVA	JG50A-BLL-ESD	500

STANDARD BULK STOPPERS



Air syringe stoppers are available in 5 different varieties including white PE, red thermal, red straight wall, blue CA, and black rubber stoppers. Typically we sell air syringes with our white polyethylene stoppers, however if the material is thicker you may want to consider our red straight wall stoppers. For low viscosity materials, we recommend either our red thermal stoppers or the thick black rubber stopper. If you are dispensing cyanoacrylate we have a blue CA stopper with a small hole in it to reduce backpressure when in use. Bulk stoppers are for any quantity that exceed 100 pieces.

SIZE	WHITE PE	RED THERMAL	RED STRAIGHT WALL	BLUE CA	BLACK RUBBER
3 cc	JG3A-G	JG3A-GW	JG3A-GBR	JG3A-GC	N/A
5 cc	JG5A-G	JG5A-GW	JG5A-GBR	JG5A-GC	N/A
10 cc	JG10A-G	JG10A-GW	JG10A-GBR	JG10A-GC	N/A
30/50 cc	JG30A-G	JG30A-GW	JG30A-GBR	JG30A-GC	JG30M-SS

TAPERED TIP AIR SYRINGE



One-piece tapered tip molded barrels are made of polypropylene and do not require a dispensing tip to operate. The tapered tip can be cut back to widen the opening and allow more material to flow. The JG30AT (JG30T-1N barrel) has a tip ID of .0385"; the JG30ATL (JG30T-1L barrel) has a tip ID of .170".

BARREL & STOPPER PACKAGE		
SIZE	PART #	QTY
6 cc	JG6AT-20	20
10 cc	JG10AT-20	20
30 cc	JG30AT-20	20
30 cc	JG30ATL-20	20

BULK COMPONENTS	
BARREL	STOPPER
JG6T-1N	JG6T-2A
JG10T-1	JG10A-GW
JG30T-1N	JG30T-2A
JG30T-1L	JG30T-2A

MANUAL SYRINGES



These syringes consist of a barrel, stopper, and plunger for manual deposit of materials. Manual syringes are available either assembled or unassembled and will work with all Jensen Global dispensing tips. The size of the syringe is measured in cc or ml and range from 1 cc to 100 cc.

ASSEMBLED MANUAL SYRINGES



Fully assembled syringes are available either calibrated or without print and come in conveniently packed bags or bulk. Luer Lock syringes have the ability to lock in all dispensing tips whether helix or ear style, and Luer Slip syringes allow all tips to be push-connected with ease. All part numbers below contain calibrated syringe barrels, but if you require non-calibrated barrels, simply add "-NP" after the LL or LS in the pre-packaged part numbers. For LL or LS unassembled bulk barrels, remove the "-P" if you require clear or no printing. For dry stoppers, remove the "S" from the Stopper bulk component part number. LDS is a low dead space syringe that contains a nipple on the end of the plunger to ensure no wasted material.

PREPACKAGED BAGS			
SIZE	LUER LOCK (LL)	LUER SLIP (LS)	QTY
1 cc	JG1CC-LL-100	JG1CC-LS-100	100
1 cc	JG1CC-LL-LDS-100	N/A	100
3 cc	JG3CC-LL-100	JG3CC-LS-100	100
5 cc	JG5CC-LL-50	JG5CC-LS-50	50
10 cc	JG10CC-LL-25	JG10CC-LS-25	25
20 cc	JG20CC-LL-20	JG20CC-LS-20	20
30 cc	JG30CC-LL-10	JG30CC-LS-10	10
50 cc	JG50CC-LL-5	N/A	5
100 cc	JG100CC-LL-5	N/A	5

ASSEMBLED BULK	
LL (1000)	LS (1000)
JG1CC-LL	JG1CC-LS
JG1CC-LL-LDS	N/A
JG3CC-LL	JG3CC-LS
JG5CC-LL	JG5CC-LS
JG10CC-LL	JG10CC-LS
JG20CC-LL	JG20CC-LS
JG30CC-LL	JG30CC-LS
JG50CC-LL	N/A
JG100CC-LL	N/A

UNASSEMBLED BULK COMPONENTS			
LL BARREL	LS BARREL	PLUNGER	STOPPER
JG1-BLLC-P	JG1-BLSC-P	JG1-P	JG1-GS
N/A	N/A	N/A	N/A
JG3-BLLC-P	JG3-BLSC-P	JG3-P	JG3-GS
JG5-BLLC-P	JG5-BLSC-P	JG5-P	JG5-GS
JG10-BLLC-P	JG10-BLSC-P	JG10-P	JG10-GS
N/A	N/A	N/A	N/A
N/A	N/A	N/A	N/A
N/A	N/A	N/A	N/A
N/A	N/A	N/A	N/A

UNASSEMBLED LUER LOCK SYRINGES



These syringes come unassembled without any calibrations and are sold in packages with the barrel, stopper, and plunger. These unassembled syringes are offered silicone free as well, please add an "SF" to the end of any below part number for a dry stopper. Available in Luer Lock style only.

SIZE	PREMIUM CLEAR	UV BLACK	UV AMBER	QTY	STANDARD CLEAR	QTY
3 cc	JG3M-50	JG3M-50-UVB	JG3M-50-UVA	50	JGM3LL-20	20
5 cc	JG5M-40	JG5M-40-UVB	JG5M-40-UVA	40	JGM5LL-20	20
10 cc	JG10M-30	JG10M-30-UVB	JG10M-30-UVA	30	JGM10LL-15	15
30 cc	JG30M-20	JG30M-20-UVB	JG30M-20-UVA	20	N/A	N/A

MANUAL TAPER TIP



Our one-piece molded barrels are made of polypropylene and do not require a dispensing tip to operate. This natural colored syringe is available in four different tip sizes and offer a great alternative for dispensing thicker materials. The tapered tip can be cut back to widen the opening and allow more material to flow. The JG30MT (using the JG30T-1N barrel) has a tip ID of .0385"; the JG30MTL (using the JG30T-1L barrel) has a tip ID of .170".

PREPACKAGED BAGS		
SIZE	PART #	QTY
6 cc	JG6MT-20	20
10 cc	JG10MT-20	20
30 cc	JG30MT-20	20
30 cc	JG30MTL-20	20

BULK COMPONENTS		
BARREL	PLUNGER	STOPPER
JG6T-1N	JG5-P	JG6T-2M
JG10T-1	JG10T-4	JG10T-2
JG30T-1N	JG30M-P	JG30M-SS
JG30T-1L	JG30M-P	JG30M-SS

SYRINGE & TIP COVERS

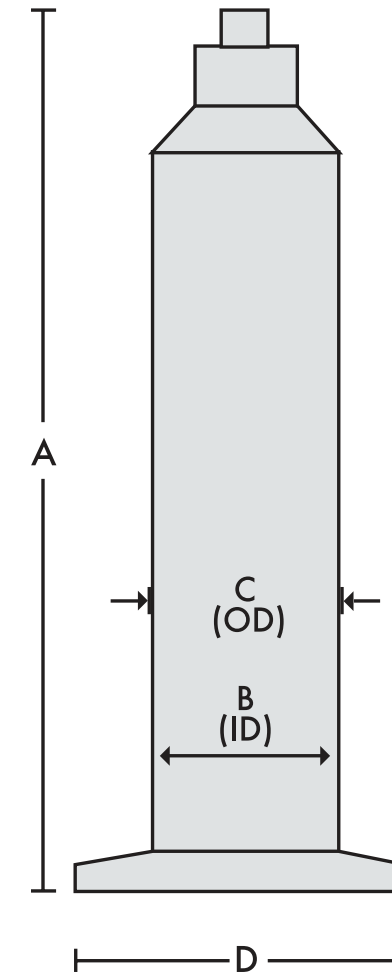
Tip and end caps serve to keep material in a syringe when not in use. Luer Lock tip caps keep material in at one end, while an end cap can keep material contained at the wider opening. End caps are used for air barrels along with tip caps when they are to be pre-filled and closed off until ready to use. Tip caps can be used with any Luer Lock or Luer Slip fitting on either a syringe or bottle cap. Available in bags of 50 or 1000.

ITEM	PART NUMBER	DESCRIPTION
1	JGTCBR	Connects to syringe tip and keeps material from curing and drying.
2	JGTCB	Connects to syringe tip and keeps material from curing and drying.
3	JGTCO	Connects to syringe tip and keeps material from curing and drying.
4	JGTCCG	Connects to syringe tip and keeps material from curing and drying.
5	JGTCL	Connects to syringe tip and keeps material from curing and drying.
6	JGTCR	Connects to syringe tip and keeps material from curing and drying.
7	JGTCC	Connects to syringe tip and keeps material from curing and drying.
8	JGTCP	Connects to syringe tip and keeps material from curing and drying.
9	JGTCBLL	Connects to syringe tip and allows the syringe to stay upright or vertical.
10	JG12-SC	Fits over the tip and provide a seal to keeps material from drying or curing.
11	JG14-SC	Fits over the tip and provide a seal to keeps material from drying or curing.
12	JG16-SC/ JG18-SC/ JG19-SC JG20-SC/ JG22-SC	Fits over the tip and provide a seal to keeps material from drying or curing.
13	JG25-SC	Fits over the tip and provide a seal to keeps material from drying or curing.
14	JGNC	Plastic enclosures that encase to prevent any bending or outside contamination.
15	JGNC1.5	Plastic enclosures that encase to prevent any bending or outside contamination.
16	JG3A-BLL-EC/JG5A-BLL-EC JG10A-BLL-EC/JG30A-BLL-EC	Keeps material inside from curing. Available in 3, 5, 10, 30/50 cc syringes.



SYRINGE SPECIFICATIONS

Dispensing syringes allow for a controlled and precise flow of material. Manual syringes consist of a barrel, stopper, and plunger for manual deposit of materials. Manual syringes are available either assembled or unassembled and will work with all Jensen Global dispensing tips. Air syringes require a heavy-duty barrel and stopper to safely dispense material up to 100 psi. The size of the syringe is measured in cc or ml and range from 1 cc to 100 cc.



Syringe Specifications

PREMIUM AIR SYRINGE	SIZE	A LENGTH (INCH/MM)	B ID (INCH/MM)	C OD (INCH/MM)	D FLANGE (INCH/MM)
Luer Lock	10 cc	3.57/90.76	0.618/15.70	0.728/18.51	1.14/29.02
Luer Lock	30 cc	4.64/118.00	0.883/22.43	1.00/25.44	1.53/38.86
Luer Lock	50 cc	6.93/176.21	0.883/22.43	1.01/25.68	1.53/38.86

STANDARD AIR SYRINGE	SIZE	A LENGTH (INCH/MM)	B ID (INCH/MM)	C OD (INCH/MM)	D FLANGE (INCH/MM)
Luer Lock	3 cc	2.95/74.93	0.373/9.448	0.452/11.50	1.243/31.58
Luer Lock	5 cc	2.78/70.62	0.494/12.55	0.58/14.73	1.244/31.60
Luer Lock	10 cc	3.59/91.19	0.614/15.60	0.734/18.65	1.353/34.40
Luer Lock	30 cc	4.60/116.86	0.878/22.31	1.02/25.91	1.76/44.70
Luer Lock	50 cc	7.04/195.35	0.878/22.31	1.02/25.91	1.76/44.70

MANUAL SYRINGE	SIZE	LENGTH (INCH/MM)	ID (INCH/MM)	OD (INCH/MM)	FLANGE (INCH/MM)
Luer Lock	3 cc	2.652/67.360	0.372/9.448	0.468/11.887	0.848/21.539
Luer Lock	5 cc	2.983/75.768	0.478/12.141	0.553/14.046	1.058/26.873
Luer Lock	10 cc	3.830/97.282	0.579/14.706	0.661/16.789	1.157/29.387
Luer Lock	20 cc	4.271/108.458	0.776/19.710	0.874/22.199	1.53/38.862
Luer Lock	30 cc	4.58/116.332	0.876/22.250	0.995/25.273	1.75/44.450
Luer Lock	50 cc	4.896/124.358	1.13/28.702	1.21/30.734	1.95/49.53
Luer Lock	100cc	7.500/190.500	1.241/31.521	1.364/34.645	1.851/47.015
Luer Slip	1 cc	3.164/80.365	0.183/4.648	0.269/6.832	0.758/19.253
Luer Slip	3 cc	2.743/69.672	0.372/9.448	0.468/11.887	0.848/21.539
Luer Slip	5 cc	3.079/78.206	0.478/12.141	0.553/14.046	1.058/26.873
Luer Slip	10 cc	3.871/98.323	0.579/14.706	0.661/16.789	1.157/29.387

TAPER TIP	SIZE	LENGTH (INCH/MM)	ID (INCH/MM)	OD (INCH/MM)	FLANGE (INCH/MM)
Taper Tip	6 cc	3.58/90.932	0.507/12.83	0.600/15.240	1.212/30.784
Taper Tip	10 cc	4.72/119.888	0.627/15.925	0.705/17.907	1.035/26.289
Taper Tip	30 cc	5.15/130.81	0.893/22.682	1.018/25.857	1.742/44.246





BOTTLE & CAP KITS

A variety of dispensing bottles are offered from 0.25 oz. up to 8 oz. with different colored caps. Jensen Global manufactures several styles including Boston round squeeze bottles, accordion style, cylindrical style bottles, or ESD safe bottles. Boston round bottles have a rounded neck, cylinder bottles have a squared off neck, and Bellows bottles are accordion shaped. They are made of either LDPE (low density polyethylene) or HDPE (high density polyethylene). Our Luer Lock caps have a unique one-piece molded design and work with all dispensing tips.

BOSTON ROUND BOTTLES & CAPS

Boston round style bottle and cap packages are offered in different colored cap options and are available in bags of 10. This style is typically used as a squeeze bottle to manually dispense material with accuracy. Jensen Global offers these bottle packages in 0.5, 1.0 and 2.0 ounce sizes and they are ideal for dispensing flux, solvents, adhesives, and solder mask.



CAPACITY	BLACK	BLUE	RED	GREEN	YELLOW
0.5 oz.	JG0.5BC	JG0.5BC-B	N/A	N/A	N/A
1 oz.	JG1.0BC	JG1.0BC-B	JG1.0BC-R	JG1.0BC-G	JG1.0BC-Y
2 oz.	JG2.0BC	JG2.0BC-B	JG2.0BC-R	JG2.0BC-G	JG2.0BC-Y

CYLINDER BOTTLES & CAPS



Cylinder bottles have straight walls and come to a cylindrical opening at the neck and are available in bags of 10. Jensen Global provides this type of bottle in a 0.25 (LDPE), 4.0 (LDPE) and 8.0 (HDPE) ounce sizes with caps. 4 oz. bottles can use any of the colored caps available but the 8 oz. bottle only can be used with the black Luer Lock cap.

CAPACITY	BLACK	BLUE	RED	GREEN	YELLOW
0.25 oz.	JG0.25BC	JG0.25BC-B	N/A	N/A	N/A
4 oz.	JG4.0BC	JG4.0BC-B	JG4.0BC-R	JG4.0BC-G	JG4.0BC-Y
8 oz.	JG8.0BC	N/A	N/A	N/A	N/A

BOTTLES & CLOSED CAPS



Closed bottle and cap kits are used to store material safely to prevent contamination and evaporation.

CAPACITY	PART NUMBER	CAP TYPE
0.5 oz.	JG0.5BC-CC	15-415 White closed cap
0.5 oz.	JG0.5BC-YC	15-415 Clear yorker cap with red tip cap
1 oz.	JG1.0BC-CC	20-410 White closed cap
2 oz.	JG2.0BC-CC	20-410 White closed cap
4 oz.	JG4.0BCC	20-410 White closed cap
8 oz.	JG8.0BC-CC	24-410 Black closed cap

FINELINE® BOTTLES & CAPS



Fineline® Applicator bottles are used primarily for cyanoacrylates and any other adhesives that cure when they come in contact with air. This unique cap clears the excess material from the needle as it is screwed onto the bottle after using. Sold as a single complete kit with either an 18 or 20 gauge IT series dispensing tip.

CAPACITY	GAUGE	PART NUMBER
1.25 oz.	18	JG1.25OVS-FL-18
1.25 oz.	20	JG1.25OVS-FL-20

ESD SAFE BOTTLES & CAPS



ESD safe bottles and caps eliminate the danger of high charges on your work station. The 2 ounce Boston Round style bottles and cap kits are available in bags of 5.

CAPACITY	CAP THREAD	PART NUMBER
2.0 oz.	20-410	JG2.0BC-ESD

DISPENSING BOTTLES



LUER LOCK CAPS



Luer Lock caps thread tightly onto the bottle and accepts any Luer Lock needle. This style of bottle caps are available in 15-415, 20-410, and 24-410 thread. They are also available in a variety of colors and quantities.

CAPACITY	THREAD	BLACK	BLUE	RED	GREEN	YELLOW
0.25 oz. or 0.5 oz.	15-415	JGC-15415BK	JGC-15415B	N/A	N/A	N/A
1-2-4 oz.	20-410	JGC-512	JGC-512B	JGC-512R	JGC-512G	JGC-512Y
8 oz.	24-410	JGC-24410	N/A	N/A	N/A	N/A

CLOSED CAPS



Closed caps thread tightly onto our bottles and provide the user with the ability to close up their material safely. The available closed cap sizes are 15-415, 20-410 and 24-410.

CAPACITY	PART NUMBER	CAP TYPE
0.5 oz.	JGC-15415-CO	15-415 White closed cap
0.5 oz.	JGC-15415YC	15-415 Yorker cap with red tip cap
1 oz.	JGC-512WL	20-410 White closed cap
2 oz.	JGC-512WL	20-410 White closed cap
4 oz.	JGC-512WL	20-410 White closed cap
8 oz.	JGC-24410-CO	24-410 Black closed cap

BOSTON ROUND BOTTLES



Jensen Global manufactures several style bottles including Boston round, accordion style, oval bottles and cylindrical style bottles. Boston round bottles have a rounded neck and are typically used to easily squeeze material out by hand. Cylinder bottles have a squared off neck and are used for larger quantities of materials. Accordion style bottles are also known as Bellows bottles and are used to easily squeeze out the material to the last drop. Our bottles are manufactured with either LDPE (low density polyethylene) or HDPE (high density polyethylene).

CYLINDER BOTTLES



ACCORDION BOTTLES



TYPE/CAPACITY	PART NUMBER	DESCRIPTION
Boston Round / 0.5 oz.	JG0.5B	0.5 oz low density plastic bottle. Accepts 14-145 cap.
Boston Round / 1 oz.	JG1.0B	1.0 oz low density plastic bottle. Accepts 20-410 cap.
Boston Round / 1 oz.	JG1.0B-HDPE	1.0 oz high density plastic bottle. Accepts 20-410 cap.
Boston Round / 2 oz.	JG2.0B	2.0 oz low density plastic bottle. Accepts 20-410 cap.
Accordion / 1 oz.	JG1.0AC	1.0 oz bottle includes a Luer Lock insert
Accordion / 2 oz.	JG2.0AC	2.0 oz bottle includes a Luer Lock insert
Cylinder / 0.25 oz.	JG0.25B	0.25 oz low density plastic bottle. Accepts 15-415 cap.
Cylinder / 4 oz.	JG4.0B	4.0 oz low density plastic bottle. Accepts 20-410 cap.
Cylinder / 8 oz.	JG8.0B	8.0 oz high density plastic bottle. Accepts 24-410 cap.
Oval / 1.25 oz.	JG1.25OV	1.25 oz LDPE clear bottle with 18-410 neck size.

OVAL BOTTLES





EQUIPMENT

DIGITAL - PROGRAMMABLE - TOUCH SCREEN

PART # JGD500T



Jensen Global's touch screen bench-top digital fluid dispenser allows for reproducible deposits of a wide range of thin or viscous materials such as solder pastes and masks, adhesives, epoxies, RTV and silicones, cyanoacrylates, paints, inks, oils, lubricants, solvents and more. It is excellent for use with pre-filled syringes of material or when loading empty syringes.

Visit www.JensenGlobal.com for more details and videos of the unit in use.

FEATURES

- Digital Touch Screen
- Timer Range .001 to 99.99 sec
- Adjustable From Seconds to Minutes or Hours
- Range Selection From Hundredths to Thousandths
- 30 Memory Storage Capability
- Sequential Program Dispensing
- Teach Mode
- Vacuum Pullback
- External Power Supply 100-240v
- Limited Lifetime Warranty

WHAT'S INCLUDED

- 3, 5, 10, 30 cc Air Syringe Barrels & Stoppers
- Syringe Adapters:
 - JG3A-XPC 3 cc
 - JG5A-XPC 5 cc
 - JG10A-XPC 10 cc
 - JG30A-XPC* 30 cc
- *also fits 50 cc syringe
- JGNS4 kit (variety pack 50 tips)

DIMENSIONS	WEIGHT	POWER SUPPLY	TIMER RANGE	AIR INPUT	AIR OUTPUT
4.5" x 6.25" x 7.75" 11.4 cm x 15.8 cm x 19.9 cm	Shot Meter - 2.1 lbs (.95kg) Foot-switch - 6 oz. Power Supply - 10 oz.	Input 100-240VAC Output 24VDC 1A	0.001 to 99.99 sec Adjustable from seconds to minutes or hours	35-100 psi (2.5 - 7 bar)	1-100 psi (0.1 - 7 bar)



EQUIPMENT

DIGITAL READOUT - SEMI AUTOMATED DISPENSER

PART # JGD400S



Jensen Global's bench top digital fluid dispenser allows for reproducible deposits of a wide range of thin or viscous materials such as solder pastes, masks, adhesives, epoxies, RTV's, silicones, cyanoacrylates, paints, inks, oils, lubricants, solvents and more. This dispenser has 2 modes of operation, manual & auto. The manual mode allows for dispensing at the operators discretion while the auto mode allows the user to set a specific time for dispensing material.

Visit www.JensenGlobal.com for more details and videos of the unit in use.

FEATURES

- Digital Screen Output
- Timer Range 0.001 to 9999 sec
- Range Selection From Hundredths to Thousandths
- Auto Mode Enables Timed Setting
- Manual Mode for Manual Operation
- Vacuum Pullback
- External Power Supply 100-240v
- Limited Lifetime Warranty

WHAT'S INCLUDED

- 3, 5, 10, 30 cc Air Syringe Barrels & Stoppers
- Syringe Adapters:
 - JG3A-XPC 3 cc
 - JG5A-XPC 5 cc
 - JG10A-XPC 10 cc
 - JG30A-XPC* 30 cc
- *also fits 50 cc syringe
- JGNS4 kit (variety pack 50 tips)

DIMENSIONS	WEIGHT	POWER SUPPLY	TIMER RANGE	AIR INPUT	AIR OUTPUT
4.5" x 5.5" x 7.75" 11.4 cm x 13.9 cm x 19.9 cm	Shot Meter - 2.05 lbs (0.93 kg) Foot-switch - 6 oz. Power Supply - 10 oz.	Input 100-240VAC Output 24VDC 1A	0.001 to 9999 sec	35-100 psi (2.5 - 7 bar)	1-100 psi (0.1 - 7 bar)

DISPENSING PARTS & ACCESSORIES - SYRINGE STAND

These syringe stands are convenient for hand-held dispensers and syringes when not in use. Designed to hold our 3, 5, 10, 20 and 30 cc air barrels when not in use. Keeping your syringes upright and secure will help maintain a clean working environment and helps protect against contamination.



PART # JGD816



PART # JGD816-SBC



PART # JGD816-SBC2

DISPENSING PARTS & ACCESSORIES - FINGER SWITCH FOR SHOT METER

Designed to be used in conjunction with Jensen Global dispensers and other electronic dispensing controllers. It can be attached to any size syringe or valve, as an alternative to the foot switch.



PART # JG805FS-R



PART # JG805FS-N



PART # JG805FS-LL



EQUIPMENT

Jensen Global offers a wide range of dispensing solutions that can handle virtually any fluid dispensing with high precision. These systems are able to disperse a wide range of viscosities, from adhesives to thick silicones and solder masks. They are designed to dispense material packaged in 3, 5, 10, 30, and 50 cc syringes. All are designed for accurate adhesive dispensing processes and they combine precise dispensing with simplicity, and convenience. Finger switches can be used as an alternative actuator to the foot switch if desired. All of these units come with a limited lifetime warranty.

ANALOG TIMED DISPENSER



PART #	JGD350S
--------	---------

This analog shot meter allows for reproducible deposits of a wide range of thin or viscous materials such as solder pastes, masks, adhesives, epoxies, RTV's, silicones, cyanoacrylates, paints, inks, oils, lubricants, solvents and more. It includes a simple analog timer controlled by a knob rotated for dispensing from approximately .01 second to 120 seconds. The default timer setting is .01 to 10 seconds. It is excellent for use with pre-filled syringes of material or when loading empty syringes. This compact analog dispenser measures just 6 3/8" x 5 7/8" x 2 3/4".

MANUAL DISPENSER



PART #	JGD150S
--------	---------

This pneumatic only bench top dispenser is a simple and compact unit that only requires an air source to operate, no electronics. This unit does not offer a timer for reproducibility or vacuum for pullback. Adjusting the dispensing unit for the desired flow rate can be done by simply turning the regulator knob. This unit has a single port and measures just 6 3/8" x 5 7/8" x 2 3/4" and is under 2 pounds.

MANUAL DISPENSER - 2 PORT



PART #	JGD150STS
--------	-----------

This pneumatic only bench top dispenser is a simple and compact unit that only requires an air source to operate, no electronics. This unit does not offer a timer for reproducibility or vacuum for pullback. Adjusting the dispensing unit for the desired flow rate can be done by simply turning the regulator knob. The dual port with toggle switch provides the option to alternate between two independently controlled syringes. This unit is not a two operator dispenser, it is for one operator that requires two materials. This compact dispenser measures just 6 3/8" x 5 7/8" x 2 3/4" and is under 2 pounds.



EQUIPMENT

An extensive line of systems and fluid reservoirs are offered to meet your dispensing needs. Jensen Global equipment can be used in various applications to provide ergonomic relief, repeatability, and control over various materials including but not limited to conformal coatings, solder pastes, RTV's, or low viscosity fluids.

STAINLESS STEEL PRESSURE TANKS



These tanks allow for material storage and dispensing. Each tank comes with a regulator, gauge and pressure relief valve. They are available in 1, 2, 3 and 5 gallon capacities.

PART NUMBER	WEIGHT	HEIGHT	DIAMETER	DESCRIPTION
JGD1G	8.82 lb.	8.5"	9.0"	1 gallon tank, top ported with regulator & gauge
JGD2G	9.84 lb	14.65"	9.0"	2 gallon tank, top ported with regulator & gauge
JGD3G	11.50 lb	14.65"	9.0"	3 gallon tank, top ported with regulator & gauge
JGD5G	13.81 lb	24.80"	9.0"	5 gallon tank, top ported with regulator & gauge

PRESSURE TANKS



These tanks are designed around industry standard bottles of cyanoacrylates (CA) and ultra violet (UV) adhesives. The JGD1LBK is a 1 pound tank that fits 500 gram bottles of cyanoacrylate and is made of aluminum. The JGD1LT is made for 1 liter UV adhesive bottles and is available as a wide tank as well.

PART NUMBER	WEIGHT	HEIGHT	ID	DESCRIPTION
JGD1LBK	2.13 lb	8.75"	2.75"	1 pound tank for 500 gram bottles of CA adhesive
JGD1LT	4.55 lb	11.5"	3.75"	1 liter tank for UV adhesive bottles
JGD1LT-W	5.60 lb	11.5"	5.75"	1 liter wide tank for UV adhesive bottles

RECEIVER HEAD & RETAINER



Receiver heads work with cartridges by securely housing them and using pressurized air to dispense material. The opening at the head of the unit allows for an adapter and dispensing tip to be attached and an air line attaches to the back to provide the necessary pressure. See page 28 for cartridge accessories.

PART #	DESCRIPTION
JGD4000-RHR-60	6oz. receiver head & retainer w/ 6 feet of 1/4" air line
JGD4000-RHR-120	12oz. receiver head & retainer w/ 6 feet of 1/4" air line
JGD4000-10.3RS	10.3oz. receiver head & retainer w/ 6 feet of 1/4" air line
JGD4000-GSOC	Gunstand for 2.5, 6 or 12 oz. head assembly, comes w/ ring style holder

CAULK CARTRIDGE FILL SYSTEM



Horizontal stand with 10.5 oz caulking cartridge retainer, Easy access ring mount, with toggle on and off switch. Holds the cartridge securely in place while dispensing.

PART #	DESCRIPTION
JGD4000-10.5T	Syringe stand with 10.5 oz caulking cartridge retainer



EQUIPMENT

INCREASED PRODUCTION - ECONOMIC DISPENSING

FOOT VALVE DISPENSER

PART # JGDFV25



Jensen Global's JGDFV25 and JGDFV25V foot valves are purely pneumatic valve pedals that include a built-in regulator and gauge to control the flow of materials and simple step-to-activate design built inside a protective housing.

The foot pedal sits under the work bench, is foot activated and designed for areas where electricity is prohibited.

They are an economical way to ergonomically dispense materials. Flow is controlled by the operator's foot. Output is determined by set air pressure, viscosity of material, and gauge size of dispensing tip.

Our unique design accepts blunt 1/4 inch tubing with no need for a barb fitting. Simply press fit the tubing into the female connector on the left side of the unit.

FEATURES

- Push-to-lock regulator
- Rubber cushion pad on pedal
- Quick push-to-connect inlet for 1/4" or 5/32" adapter hose

WHAT'S INCLUDED

- JGDFV25 (standard) or JGDV25V (vacuum pullback)
- Reducer fitting for 5/32" OD tubing adapters

FOOT VALVE WITH VACUUM

PART # JGDFV25V



SPECIFICATIONS	MODEL JGDFV25/V
Dimensions	6.75" x 3.8" 3.75" 17.15 cm x 9.66 cm x 9.53 cm
Weight	3.2 lbs. (1.45 kg)
Air Input	35-100 psi (2.4 - 6.9 bar)
Air Output	1-100 psi (0.1 - 6.9 bar)

SEMI-AUTOMATED DISPENSING



CYANOACRYLATE DISPENSER



PART # JGD7000-CA

Designed to accept 1 lb bottles (500 grams) of instant adhesives and dispense low to medium viscosity fluids consistently and accurately.

CA adhesive dispenser is designed to accept a 1 lb (500 grams) bottle of cyanoacrylate adhesives. There is no pouring needed; you just drop your 1 lb bottle of glue right into the dip-tube tank and insert the material line to the bottom of the bottle.

SYSTEM BREAKDOWN	
PRODUCT	DESCRIPTION
JGD500T	Digital Shot Meter has a 30 program memory storage, a timer range of 0.001 to 99.99 seconds, various modes, and sequential dispensing.
JGD700D	Diaphragm Valve designed to dispense low to medium viscosity materials and excellent for cyanoacrylates, anaerobics, UV adhesives, and MEK.
JGD1LBK	1 Pound Pressure Tank
JGD4000-GSOV	Adjustable Valve Stand
JGNS4	Dispensing Tip Sample Kit

UV ADHESIVE DISPENSER



PART # JGD7000-UV

Designed to accept 1 liter bottles of UV adhesives and dispense low to medium viscosity fluids consistently and accurately.

UV Cure adhesive dispenser is designed to accept a 1 liter bottle of ultra-violet cure adhesives. There is no pouring needed; you just drop your 1 liter bottle of glue right into the dip-tube tank and insert the material line to the bottom of the bottle.

SYSTEM BREAKDOWN	
PRODUCT	DESCRIPTION
JGD500T	Digital Shot Meter has a 30 program memory storage, a timer range of 0.001 to 99.99 seconds, various modes, and sequential dispensing.
JGD700D	Diaphragm Valve designed to dispense low to medium viscosity materials and excellent for cyanoacrylates, anaerobics, UV adhesives, and MEK.
JGD1LT	1 Liter Pressure Tank
JGD4000-GSOV	Adjustable Valve Stand
JGNS4	Dispensing Tip Sample Kit

SOLDER MASK BULK DISPENSER



Our system is designed to accept 1 gallon of solder mask (water soluble or peel-able mask), and can be configured for 1, 2, 3, or 4 operators. A simple operating pinch tube wand allows for manual dispensing of solder mask through any desired needle. The 1 gallon pressure tank has a large opening to allow easy pouring of solder mask from most size containers and easy access for cleaning. This system is purely pneumatic and easy to operate.

PART NUMBER	DESCRIPTION
JGD1000-1	1 gallon tank, one operator system
JGD1000-2	1 gallon tank, two operator system with material manifold
JGD1000-3	1 gallon tank, three operator system with material manifold
JGD1000-4	1 gallon tank, four operator system with material manifold

BALL VALVE SYRINGE LOADING SYSTEM



PART # JGD1G-BV-SLS

1 gallon wide mouth opening 304 stainless steel pressure vessel, with 100 psi regulator and gauge, and stainless steel ball valve. This loading system is designed to fill syringes and cartridges by pouring your bulk flow-able material into the tank and using the ball lever to manually fill each syringe/cartridge. This system includes all necessary fittings to set up a filling station.

EQUIPMENT

EQUIPMENT



SYRINGE ADAPTERS

Syringe adapters are the connection between the syringe and our dispensing equipment. These allow pressurization of a syringe to dispense a metered amount of material ergonomically and with precision.

XP-SERIES SYRINGE ADAPTERS



These new purple syringe adapters are specifically designed with an O-ring seal to fit all Jensen Global air syringes and use 5/32" air line that press-fits to the head.

BLACK BARB	WHITE QC	HOSE	BLACK BARB	WHITE QC	HOSE	DESCRIPTION
JG3A-XP	JG3A-XPC	3 ft	JG3A-XP6	JG3A-XPC6	6 ft	3 cc adapter, hose & connector
JG5A-XP	JG5A-XPC	3 ft	JG5A-XP6	JG5A-XPC6	6 ft	5 cc adapter, hose & connector
JG10A-XP	JG10A-XPC	3 ft	JG10A-XP6	JG10A-XPC6	6 ft	10 cc adapter, hose & connector
JG30A-XP	JG30A-XPC	3 ft	JG30A-XP6	JG30A-XPC6	6 ft	30/50 cc adapter, hose & connector

X-SERIES SYRINGE ADAPTERS



These black syringe adapters are specifically designed with an O-ring seal to fit all Jensen Global air syringes. It uses 1/4" air line secured with a clamp.

BLACK BARB	WHITE QC	HOSE	BLACK BARB	WHITE QC	HOSE	DESCRIPTION
JG3A-X	JG3A-XC	3 ft	JG3A-X6	JG3A-XC6	6 ft	3 cc adapter, hose & connector
JG5A-X	JG5A-XC	3 ft	JG5A-X6	JG5A-XC6	6 ft	5 cc adapter, hose & connector
JG10A-X	JG10A-XC	3 ft	JG10A-X6	JG10A-XC6	6 ft	10 cc adapter, hose & connector
JG30A-X	JG30A-XC	3 ft	JG30A-X6	JG30A-XC6	6 ft	30/50 cc adapter, hose & connector

1CC ADAPTERS



This is a custom made adapter for pre-filled 1cc syringes of frozen epoxies and other materials filled in a 1 cc air syringe.

PART #	HOSE	DESCRIPTION
JG1CCUSA	6 ft	1 cc syringe adapter with 5/32" tubing with black barb
JG1CCUSA-HA	6 ft	1 cc syringe adapter with 5/32" tubing for wider 1cc syringes with black barb
JG1CCUSA-C	6 ft	1 cc syringe adapter with 5/32" tubing with white QC fitting
JG1CCUSA-HA-C	6 ft	1 cc syringe adapter with 5/32" tubing for wider 1cc syringes with white QC fitting

UNIVERSAL SYRINGE ADAPTERS



Universal adapters are designed to accept a variety of air syringes and use a locking gasket mechanism to provide a tight seal.

PART #	HOSE	DESCRIPTION
JG3CCUSA	6 ft	3 cc universal syringe adapter with black barb
JG5CCUSA	6 ft	5 cc universal syringe adapter with black barb
JG10CCUSA	6 ft	10 cc universal syringe adapter with black barb
JG30CCUSA	6 ft	30 cc universal syringe adapter with black barb
JG3CCUSA-C	6 ft	3 cc universal syringe adapter with white QC fitting
JG5CCUSA-C	6 ft	5 cc universal syringe adapter with white QC fitting
JG10CCUSA-C	6 ft	10 cc universal syringe adapter with white QC fitting
JG30CCUSA-C	6 ft	30 cc universal syringe adapter with white QC fitting



DISPENSING VALVES

Dispensing valves provide users with accurate and reliable material control. Our dispensing valves are specifically designed to handle a wide variety of dispensing materials. Some of the more popular materials include CA's, RTV's, flux, anaerobics, and silicone polymers.

DIAPHRAGM VALVE



The diaphragm valve is designed to dispense low to medium viscosity materials and is excellent for cyanoacrylates, anaerobics, ultra violet (UV)-curing adhesives and MEK. The JGD500T can control the valve opening and the valve's internal spring provides a clean shut off of material. The length of this unit is 3.1" (78.74 mm) and the diameter is 0.936" (23.77 mm).

PART # JGD700D

NEEDLE VALVE



The needle valve is excellent for a wide range of shot sizes and materials up to 100,000 cP (centipoise). It can be operated with the JGD500T using the internal spring to close it for low or medium viscosity materials like adhesives, epoxies, silicones, inks, and lubricants. For higher viscosity materials, the JGD500T uses air to open and close the valve. The length of this unit is 4.5" (114.3 mm) and the diameter is 1.0" (25.4 mm).

PART # JGD710N

SPRAY VALVE



The spray valve is pneumatically actuated and uses air pressure to dispense low to medium viscosity materials, generally up to 1000 cP. Air pressure supplied to the air cap provides atomization and can be controlled by the JGD500T to initiate just before material is dispensed. Spray output can be varied by the fine adjustment knob controlling needle stroke distance. Suggested materials include lubricants, solvents, inks, and conformal coatings. The length of this unit is 4.2" (106.7 mm) and the diameter is 1.0" (38.1 mm).

PART # JGD740S

HANDHELD PINCH WAND



This manual dispensing wand has a flexible silicone pinch tube and is excellent for solder masks and other flowable materials that require 50 psi or less to dispense. The pinch tube is easily replaced, therefore making clean up easy and quick. The front of the wand has a Luer Lock female fitting, allowing use of any size dispensing tip. The length of this unit is 6.73" (170.9 mm) and the diameter is 0.63" (16 mm).

PART # JGDMPW

VACUUM PICK UP WAND



This advanced vacuum pick-up wand has a venturi built into the handle and connects directly to an air source like the JGD500T shot meter. It provides whisper-quiet operation and allows you to pick up components quickly. Two different angled tips and three suction cups are included. The length of this unit is 5.25" (133.4 mm) and the diameter is 0.48" (12.19 mm).

PART # JGD301



DISPENSING GUNS

PNEUMATIC DISPENSING GUNS

200 ML DUAL PNEUMATIC GUN



Dual pneumatic gun with a 200 ml capacity for two part applications. The ratio is a dedicated 1:1 (200 ml x 200 ml) and this unit has an adjustable regulator at 100 psi. The maximum output of this gun is 145 psi. Nominal thrust is 484 lbs.

PART #	DESCRIPTION
JGDA200LP	200 ml dual pneumatic gun

200 ML MULTI RATIO PNEUMATIC GUN



Dual pneumatic gun with a 200 ml capacity for various two part applications. The ratio has several different variations, of 1:1, 2:1, 4:1 and 10:1 with the kits included. It has a twist and lock plunger feature to easily switch between ratios. This unit has an adjustable air regulator at 100 psi and the maximum output of this gun is 145 psi. Nominal thrust 484 lbs.

PART #	DESCRIPTION
JGDA200LPMR-S3	200 ml multi ratio pneumatic gun

50ML PNEUMATIC GUN 1:1 RATIO



Two-part epoxy pneumatic gun that accepts a 1:1 ratio dual syringe cartridge (usually bought pre-filled from a material manufacturer). Dual syringe is a 25 x 25ml syringe of material.

PART #	DESCRIPTION
JGD25-94	50 ml pneumatic gun

10.3 OZ. SAUSAGE PNEUMATIC GUN



Pneumatic gun has a 10.3 oz. cartridge dispenser that also works for 10 oz. sausage cartridges. It has a series 3 air action system, piston rod action cartridge plunger or sausage, 145 psi max input, and a drawn aluminum barrel.

PART #	DESCRIPTION
JGD10.3LP	10.3 oz. sausage pneumatic gun

10 OZ. CARTRIDGE PNEUMATIC GUN



Pneumatic gun with a 10 oz. cartridge dispenser. It has air action cartridge plunger, 145 psi max input, and a drawn aluminum barrel. With a true adjustable air regulator, this can output up to 75 psi. Includes a rotating air hose connector.

PART #	DESCRIPTION
JGDA61001	10 oz. cartridge pneumatic gun



DISPENSING GUNS

LITHIUM ION AND MANUAL DISPENSING GUNS

LITHIUM ION GUN



Powered by a 12 volt lithium ion battery pack (battery and charger included) for dispensing standard 10.3 oz & 29 oz. cartridges. It has a one hour charge time for quick charging, and a long lasting battery. The maximum force of this gun is 475 lbs., and has variable speed control.

PART #	DESCRIPTION
JGD82010-L	Lithium ion gun for 10.3 oz. cartridges
JGD82029-L	Lithium ion gun for 29 oz. cartridges

LITHIUM ION GUN



Powered by a 12 Volt Lithium ion battery pack (battery and charger included) for dispensing 10 oz., 20 oz., 400 ml. sausage, or 20 oz. bulk cartridges. It has a one hour charge time for quick charging, and a long lasting battery. The maximum force of this gun is 475 pounds, and has variable speed control.

PART #	DESCRIPTION
JGD82600-BL	Lithium ion gun for 20 oz. bulk cartridges
JGD82600-L	Lithium ion gun for 10 oz., 20 oz., or 400 ml Sausage

TWO PART EPOXY GUNS



Two part epoxy manual gun accepts a 1:1 ratio dual syringe cartridge (usually bought pre-filled from a material manufacturer). Dual syringe is a 25 x 25 ml syringe of material.

PART #	DESCRIPTION
JGD104	Dual 25 ml syringe cartridge epoxy gun 1:1 ratio
JGD104-2R	Dual 25 ml syringe cartridge epoxy gun 1:1/ 2:1 ratio

MANUAL SYRINGE GUN



Manual syringe gun fits Jensen Global syringes (syringes not included).

PART #	DESCRIPTION
JGD10CC-MG	10 cc manual syringe gun
JGD30CC-MG	30 cc manual syringe gun

MANUAL CARTRIDGE GUN



This manual gun accepts standard 2.5 oz., 6 oz. and 12 oz. cartridges.

PART #	DESCRIPTION
JGD850-25M	2.5 oz. manual syringe gun
JGD850-60M	6 oz. manual syringe gun
JGD850-120M	12 oz. manual syringe gun

ACCESSORIES

CARTRIDGES & NOZZLES



Cartridges are an alternative product when syringes have too small of a capacity. Cartridges are available in low or high density and offered in three different capacities (2.5oz., 6oz. and 12oz.). Cartridge accessories include plunger wipers, end caps and threaded plugs. 1/4" threaded nozzles screw into the cartridge for bead and dot dispensing. Dispensing nozzles are used in conjunction with cartridges when the application requires a reservoir larger than a syringe.

PART #	DESCRIPTION	QTY/BAG
CLD-25-10	Low density cartridge - 2.5oz.	10
CLD-60-10	Low density cartridge - 6.0 oz.	10
CLD-120-10	Low density cartridge - 12.0 oz.	10
CHD-25-10	High density cartridge - 2.5 oz.	10
CHD-60-10	High density cartridge - 6.0 oz.	10
CHD-120-10	High density cartridge - 12.0 oz.	10
CLD-PB-10	Wiper plunger - black	10
CLD-P-10	Wiper plunger - natural	10
CHD-14THR-10	Red threaded plug for cartridge	10
CHD-FC-10	Red flange-wide end of cartridge	10
CHD-252-10	1/6 opening x 2.5 inches	10
CHD-254-10	1/8 opening x 2.5 inches	10
CHD-410-10	1/32 opening x 4 inches	10
CHD-420-10	1/16 opening x 4 inches	10

STATIC MIXERS

Static mixers connect to the end of dual-part syringes or cartridges and mix two-component materials. Connection to the material is either bell or bayonet style, and the dispensing end may be Luer Slip, Luer Lock, or stepped.



PART #	TYPE-END	STYLE	ELEMENTS	DIAMETER
JG160-424	Stepped	Bell	24	.189"
JG160-624	Stepped	Bell	24	.248"
JG160-624LL	Luer Lock	Bell	24	.248"
JG160-818	Stepped	Bell	18	.366"
JG160-818LL	Luer Lock	Bell	18	.366"
JG160-824	Stepped	Bell	24	.366"
JG160-840LL	Luer Lock	Bell	40	.366"
JG160-830	Stepped	Bell	30	.366"
JG161-230	Stepped	Bell	30	.497"
JG161-236LL	Luer Lock	Bell	36	.497"
JG190-212	Luer Slip	Bayonet	12	.093"
JG190-324LL	Luer Lock	Bayonet	24	.125"
JG190-416	Luer Slip	Bayonet	16	.187"
JG190-416LL	Luer Lock	Bayonet	16	.213"
JG190-521	Luer Slip	Bayonet	21	.250"
JG190-612	Luer Slip	Bayonet	12	.250"
JG190-612LL	Luer Lock	Bayonet	12	.250"
JG190-620	Luer Slip	Bayonet	20	.250"
JG190-620-S	Luer Slip	Bayonet	20	.250"
JG190-620LL	Luer Lock	Bayonet	20	.250"
JG295-620LL	Luer Lock	Bayonet	20	.203"
JG295-620	Luer Slip	Bayonet	20	.203"

FITTING & TUBING

FITTINGS

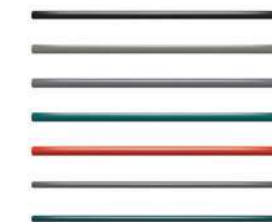
A variety of plastic and nylon fittings that help connect your dispensing devices are available.



ITEM	PART NUMBER	DESCRIPTION
1	F-FTLC	Female to Female Luer Lock Connector
2	JG901	Female connector for barb fitting with 1/4 male NPT thread
3	JGF-200-4	Syringe Adapter Fitting Reducer 1/4" to 5/32"
4	PMC20-025	Syringe Adapter Quick Connect 5/32" Tube
5	PMC22-02	Syringe Adapter Quick Connect 1/4" Tube
6	F-MTLL004	Male Luer Lock to Barb for 1/16" ID Tubing
7	JG2601-4L	Luer Lock Adapter Fitting for JGD-MPW
8	F-X430-1	10-32 Special tapered thread with 1/4" hex to 400 series barb
9	JGD1G-S	EPDM Seal for 1 & 2 Gallon SS Tank
10	F-18MTLL-1	Male Luer Lock to 1/8" NPT
11	JGF-INV	Injection valve fitting
12	F-14MTLL-1	Male Luer Lock to 1/4" NPT
13	F-FTLLE-1	Female Luer to Luer 90 degree elbow fitting
14	F-14LFTLL	Female Luer 90 degree elbow to 1/4" NPT
15	JG75013P	1/4" NPT Luer Lock Needle Adapter
16	JG160-HB-01	Turns "H" style or stepped nozzle into Luer Lock

TUBING

A variety of material or air tubing is available that has an OD of either 1/4" or 5/32". If replacing syringe adapter tubing is required, our X-series adapters use 1/4" clear air tubing and our XP-series adapters use 5/32" clear air tubing. If you need extra material line we have clear or green tubing available. The replacement tubing for our pinch wand JGDMPW would be the 1/4" red silicone tubing. Tubing is sold per foot and comes coiled in a bag.



PART NUMBER	DESCRIPTION
PE2.5AB	Material 5/32" UV-PE Black Tubing
F-AL14	Syringe Adapter 1/4" Clear Air Tubing
F-AL14L	Pinch Tube Wand 1/4" Clear Material Tubing
PE-4AG	Material 1/4" PE Green Tubing
JG1013R-FT	Red Silicone Tubing for JGDMPW
F-AL532	Syringe Adapter 5/32" Clear Air Tubing
PE2.5AG	Material 5/32" PE Green Tubing



HANDWEAR & KITS

GLOVES & FINGER COTS

Jensen Global is an authorized distributor of QRP Gloves and Finger Cots. We have a variety of gloves and finger cots available. Sizes are typically available in XS to XL.



PART #	DESCRIPTION
Q-095	Cleanroom - 9" White Nitrile
Q-609BPF	General Purpose - 9" Biotech Latex
Q-8BQF09	General Purpose - 9" - 8 mil Blue Nitrile PF
Q-BQFO9	General Purpose - 9" - 5 mil Blue Nitrile PF
Q-GPSPD	General Purpose Cut Resistant Knit
Q-KAS	General Purpose Nylon Uncoated
Q-PDESDEC	ESD Nylon Palm Dipped
Q-PDWS	ESD Wave Solder Glove
Q-PDESNDY	ESD Nylon Carbon Palm Dipped
Q-SQBF09	General Purpose - 9" - 3 mil Soft Blue Nitrile PF
Q-VHC12	Clean Room - 12" Clear Vinyl - 10 packs per case



PART #	DESCRIPTION
Q-7C	Pink Latex XC ESD
Q-8C	Black Latex XC ESD
Q-9C	White Nitrile XC ESD
Q-5J	Powder-Free Natural
Q-7J	Powder-Free Pink ESD
Q-8J	Powder-Free Black ESD
Q-9J	Powder-Free Nitrile

KITS

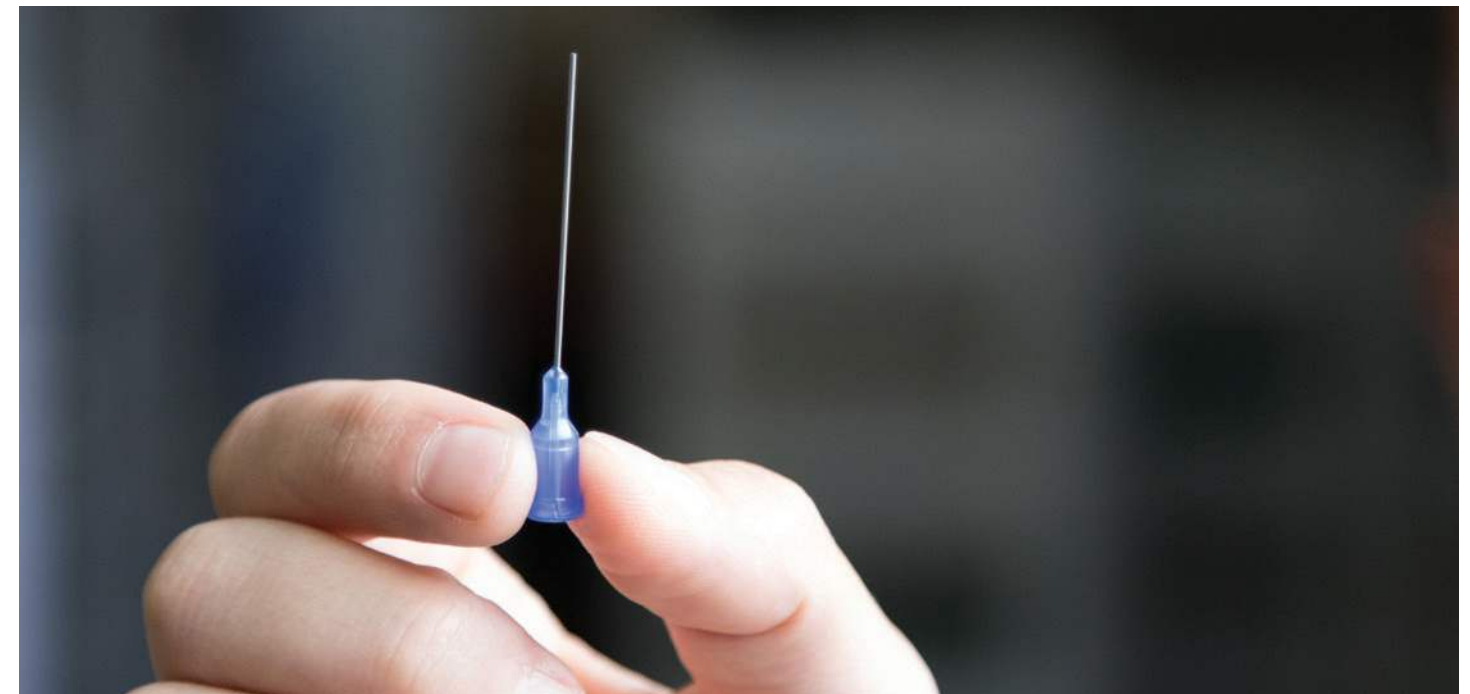
Kits include samples of a wide variety of dispensing tips and syringes to allow you to select the appropriate products that work best for your dispensing application.



PART NUMBER	DESCRIPTION
JGNS4	Small Dispensing Tip Kit
JG120NK	Large Dispensing Tip Kit
JG120NK-NT	Large Premium Dispensing Tip Kit
JG120DN-NT	Small Premium Dispensing Tip Kit
JG120A	Dispensing Tip & Syringe Kit w/ X- Series Adapters
JG120AP	Dispensing Tip & Syringe Kit w/ XP- Series Adapters
JG120NS	Dispensing Tip & Syringe Kit
JG120DS	Small Syringe Kit
JG120DB	Bottle & Cap Kit w/ JGNS4



OUR STORY



With over 30 years in the industry, Greg Jensen took his expertise and knowledge regarding dispensing products and wanted to focus on what he did best, help people with their dispensing needs and customize solutions for those needs. In 2002 Jensen Global, Inc. was founded with the goal of providing an extensive offering of high quality dispensing products from a reliable and trusted company.

The Company was built one customer at a time on the expectation that expertise, trust and personal service were delivered. Despite the significant growth that Jensen Global has experienced since 2002, we still maintain this same focus. We are aware that as a customer of dispensing products you have options. However, we also know that if we continue with the values that Jensen Global was built on combined with our great pricing you will not find a company that will provide a better overall experience. Our ongoing focus is to make sure that every experience, whether online or offline is easy, efficient and addresses each person's specific needs. That is why we provide a variety of communication channels and resources in which to facilitate a well-informed decision on which Jensen Global product is your best solution.

We believe that it is imperative to ensure our experts work directly with our distributors, representatives and end users so that the right solution and product is delivered correctly and quickly. We believe we do this better than anyone else in the industry, and continue to find ways to make the experience of working with Jensen Global easier, more efficient and comprehensive.

These goals need to be reinforced and adhered to everyday, with every interaction. Moving forward we will continue to take the required steps to continuously learn what our customer's needs are and how we can improve the experience of working together. Jensen Global will continue to grow the product offering, consistent with our high quality standards and competitive pricing. We encourage you to contact us and provide feedback, good or bad, so that we can continue improving your experience.

Thank you for allowing Jensen Global the opportunity to satisfy your dispensing needs.

JENSEN GLOBAL

712 E. MASON ST.
SANTA BARBARA, CA 93103

TEL 805-965-3668
FAX 805-456-2039

www.jensenglobal.com
E-mail: sales@jensenglobal.com

