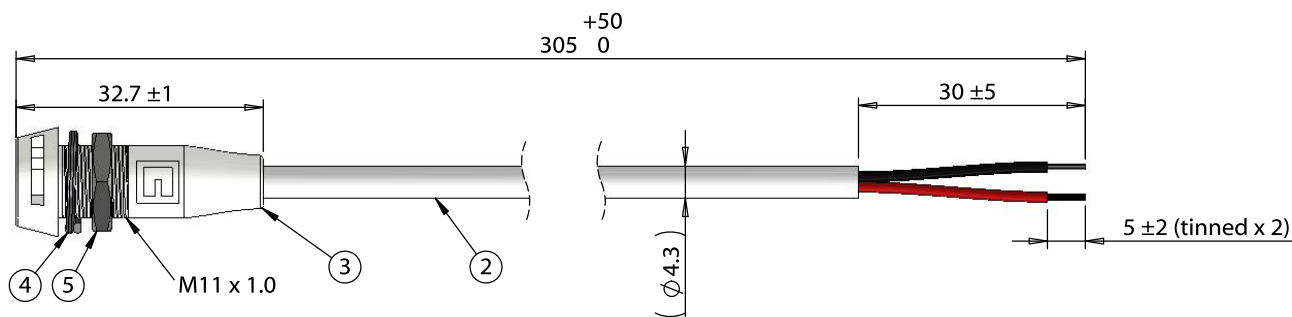
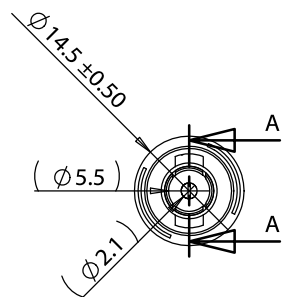
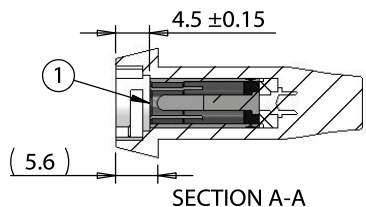
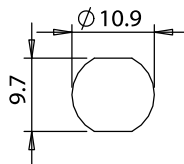


ITEM NO.	PART NUMBER	DESCRIPTION	QTY.	COMPONENT NOTES
1	50-00152	Connector, dc jack, 5.5x2.1xH6.5xL19.5 mm, molding style	1	
2	30-00690	Wire, 2C TS, 22 AWG, UL2464, 300V, 80C, 4.30 mm, VW-1, PVC, white	1	
3	24-00256	Overmold, dc jack, 5.5 mm, twist lock panel mount, TIC	1	white
4	56-00001	Hardware, washer, lock, 14x11.1x1.1 mm, SPCC, nickel plated	1	
5	56-00000	Hardware, nut, hex, 13x2.5 mm, M11x1.0, brass, nickel plated	1	



#### Installation Details

Panel thickness: 1.5 - 4.5 mm  
Recommended Panel cutout:




#### Notes:

Designed to mate with cable assembly: 10-02934

Functionally equivalent components may be substituted

Wiring Diagram	
50-00152	wire color
center	red
sleeve	black

Revision:	Date:	Description:	Prepared:	Notes:	<h1>TENSILITY</h1> tel 1.541.323.3228 800 877.670.7118 fax 1.541.323.4202 web tensility.com	
A	9/19/2018	Initial release	JP <small>Digitally signed by JP Date: 2018.09.21 13:57:15 -07'00'</small>			RoHS compliant
			Verified:	Function test: no open, no short circuit, no intermittent	Size:	
			AW <small>Digitally signed by AW Date: 2018.09.21 16:08:26 -07'00'</small>	Description:	Part number:	
			Dimensions are in millimeters. Tolerances: X: ± 0.5 mm X.X: ± 0.3 mm X.XX: ± 0.05 mm	Cable, 305 mm, 5.5x2.1 mm 50-00152 dc jack twist lock panel mount to 5 mm tinned, 22 AWG, white	A 10-02979	
					Scale: 1:1	
						Sheet 1 of 1

5

4

3

2

1