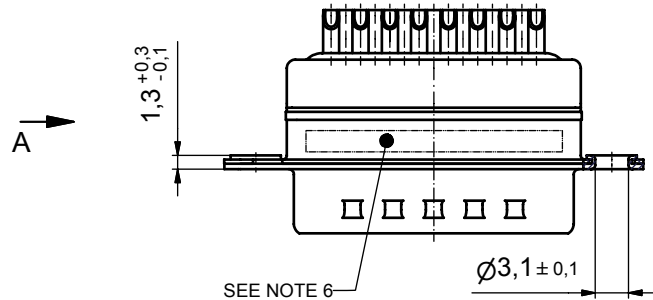
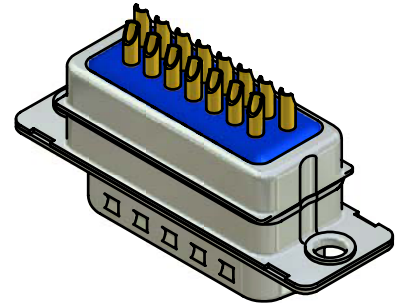
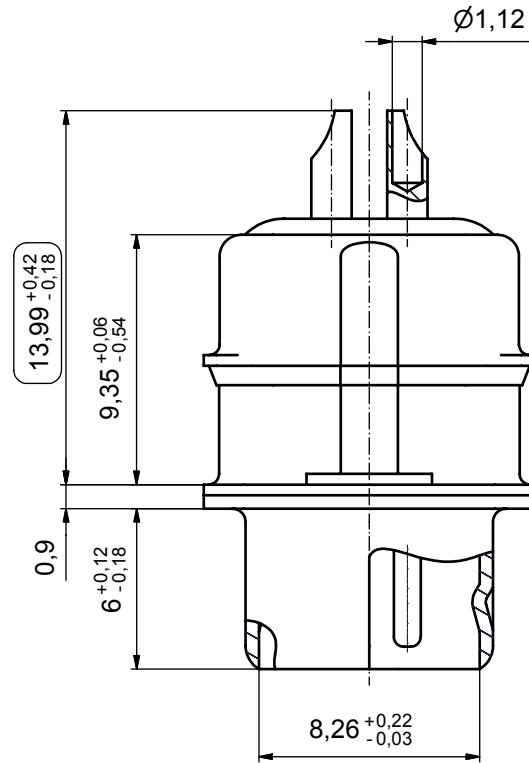
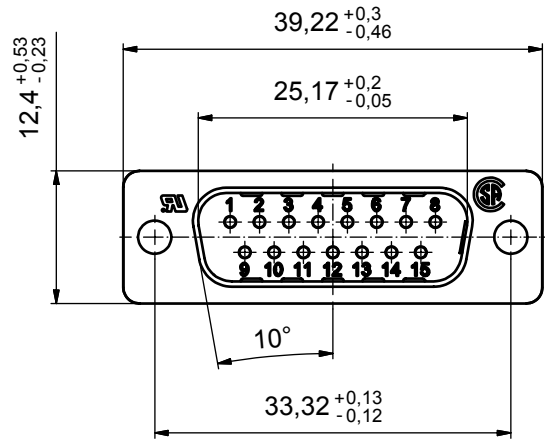


A (5:1)



NOTES:

1. METALSHELLS: STEEL; min. 320µ" TIN
2. INSULATORS: PBT GF UL 94 V-0, BLACK
3. CONTACTS: COPPER ALLOY
PLATING: 8µ" HARD GOLD over min. 50µ" NICKEL
SOLDER CUP ACCEPTS CABLE AWG 20
4. CAPACITANCE: 2 x 830pF ± 20%
5. DIELECTRIC WITHSTANDING VOLTAGE: 300 VDC
6. CONNECTOR IS PART MARKED: 241A29170X CONEC ABC
7. □ = CHECK DIMENSION

Directive 2002/95/EC
RoHS
Compliant

APPROVAL # FREIGABE # DEBLOCAGE # AUTORIZACION # APPROVAL	APPROVAL # FREIGABE # DEBLOCAGE # AUTORIZACION # APPROVAL
CUSTOMER APPROVAL DATE:	
NAME:	TITLE:
COMPANY NAME:	
APPROVAL # FREIGABE # DEBLOCAGE # AUTORIZACION # APPROVAL	APPROVAL # FREIGABE # DEBLOCAGE # AUTORIZACION # APPROVAL

THIS DRAWING MAY NOT BE COPIED OR REPRODUCED IN ANY WAY, AND MAY NOT BE PASSED ON TO A THIRD PARTY WITHOUT WRITTEN PERMISSION. OWNERSHIP AND COPYRIGHT OF CONEC GmbH DO NOT ALTER CAD DRAWING BY HAND

finish:		tolerance		 dim. in mm	scale:	2:1 (5:1)		
					material:	SEE NOTES		
					title:	D-SUB PI FILTER MALE SOLDER CUP 15 pos.		
					dwg no:		Inventor	
							DIN-A3	
					sh: 1			
rev.	description	date	name				part no:	241A29170X

date	name	title:	dwg no:	Inventor	DIN-A3
drawn 30.12.04	Schmidt	D-SUB PI FILTER MALE SOLDER CUP 15 pos.			
appd. 30.12.04	Mickenbecker		dwg no:	Inventor	DIN-A3
norm	DIN 41652				
d-old					
rev.	description	date	name	part no:	241A29170X