

PERFORMANCE CHARACTERISTICS :

CURRENT RATING : 1.5A AT 20°C (FULLY LOADED)
 1A AT 70°C (FULLY LOADED)
 RATED VOLTAGE : 500V AC (CONT / CONT)
 OPERATING TEMPERATURE : -55°C TO 125°C
 CONTACT RESISTANCE : 25mΩ MAX.
 INSERTION FORCE : 0.75 N MAX / CONT
 EXTRACTION FORCE : 0.15 N MIN / CONT
 INSULATION RESISTANCE : 10⁴MΩ MIN.

NOTES :

1. UL APPROVED WITH USR AND CNR.
2. MEASURED AT THE BOTTOM.
3. MATERIAL CONTACT : PHOSPHORBRONZE.
HOUSING : LCP 30% GLASS-FILLED.
4. CONNECTOR PRINTED WITH P/N AND DATE CODES.
5. FOR ACTUAL CONTACT LOADINGS, SEE LOADING PATTERN MATING SIDE.)
6. 4 = LEVEL 1 (5.30)
5 = LEVEL 2 (6.80)
6 = LEVEL 3 (8.30)
7. 'HM2J70PEE128' LEAD FREE INDICATOR : LF = LEAD FREE
PERFORMANCE LEVEL INDICATOR (Ref DWG No BS,C ,201844,003)
8. FOR RECOMMENDED PTH DIMENSIONS REFER DRAWING : BS,A ,201572,001
9. THIS PRODUCT (LF) MEETS EUROPEAN UNION DIRECTIVES AND OTHER COUNTRY REGULATIONS AS DESCRIBED IN GS-47-0004

A

B

C

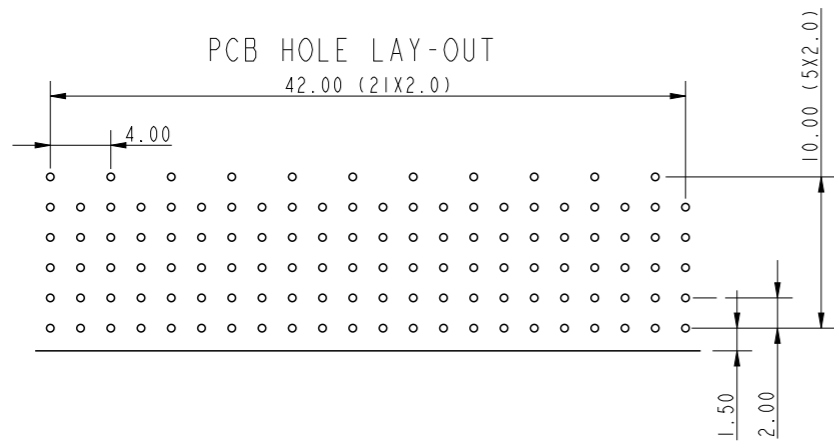
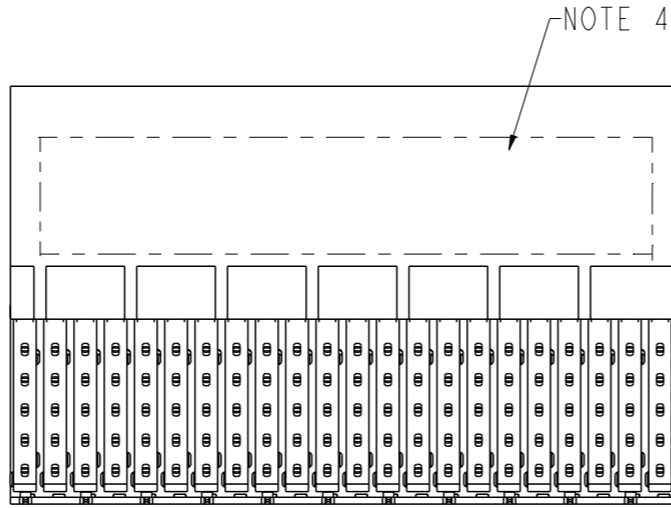
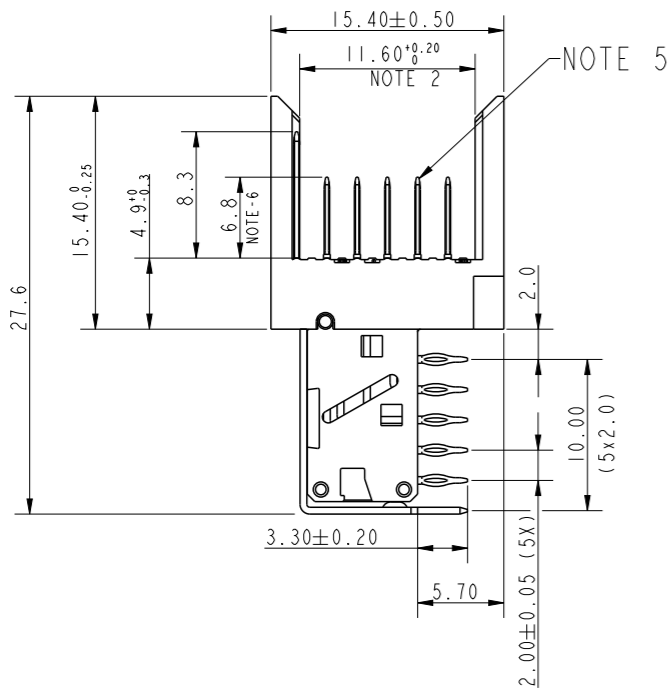
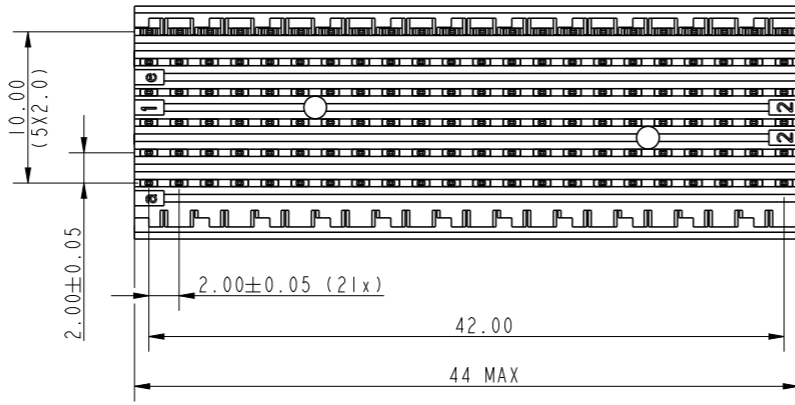
D

A

B

C

D



LOADING PATTERN : MATING SIDE

F	6	6	6	6	6	6	6	6	6	6	6	6	6	6	6	6	6	6	6	6		
E	5	5	5	5	5	5	5	5	5	5	5	5	5	5	5	5	5	5	5	5		
D	5	5	5	5	5	5	5	5	5	5	5	5	5	5	5	5	5	5	5	5		
C	5	5	5	5	5	5	5	5	5	5	5	5	5	5	5	5	5	5	5	5		
B	5	5	5	5	5	5	5	5	5	5	5	5	5	5	5	5	5	5	5	5		
A	5	5	5	5	5	5	5	5	5	5	5	5	5	5	5	5	5	5	5	5		
Z	0	0	0	0	0	0	0	0	0	0	0	0	0	0	0	0	0	0	0	0		
	1	2	3	4	5	6	7	8	9	10	11	12	13	14	15	16	17	18	19	20	21	22

spec ref	-	dr	P-Mathew Nebu	2011/05/24	projection	mm	size	A3	scale	1/1		
tolerance std	ISO 406 ISO 1101	eng	Alex Babu	2019/11/11			ecn no	ELX-I-26926-1	rel level	Released		
TOLERANCES UNLESS OTHERWISE SPECIFIED		chr	-	2019/11/12								
surface	linear	appr	Kuriakose, San	2019/11/12	product family	MILLIPACS	MPACS RA HDR		dwg no	BSC202767015	rev	H
ISO 1302	angular			cat. no.	HM2J70PEE128----	Product - Customer Drw		sheet 1 of 1				