

6

5

4

3

2

1

**MATERIAL SPECIFICATIONS:**

Housing: Nylon-6, UL-94V-0 rated, color black  
Contact / Terminals: Brass. Tin plated

**MECHANICAL SPECIFICATIONS:**

Withdrawal force: 1.3 to 6.7 Kg  
Panel thickness range: 1.0 ~ 2.0 mm  
Solderability: 270°C for 5 sec. max.

**ELECTRICAL SPECIFICATIONS:**

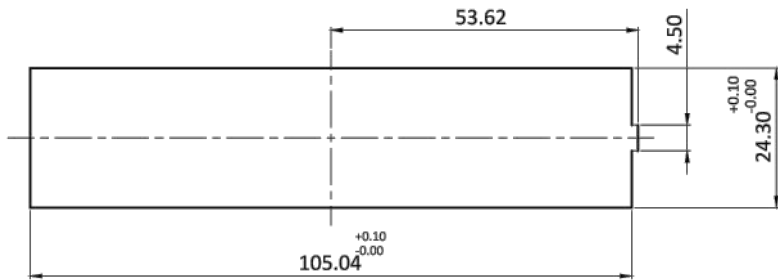
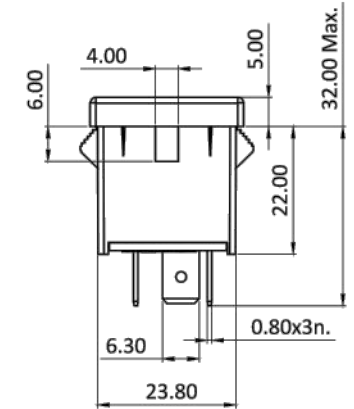
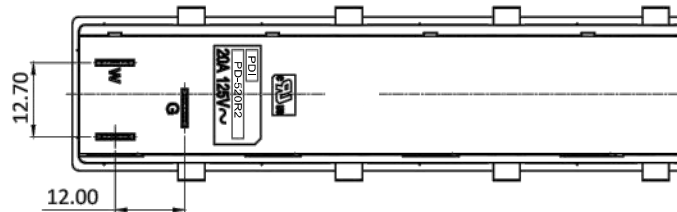
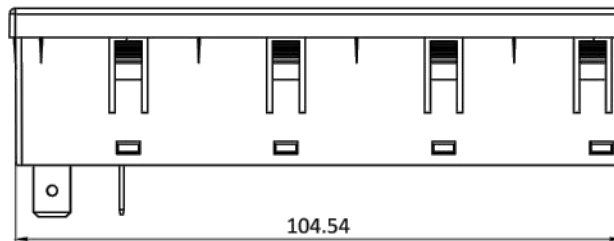
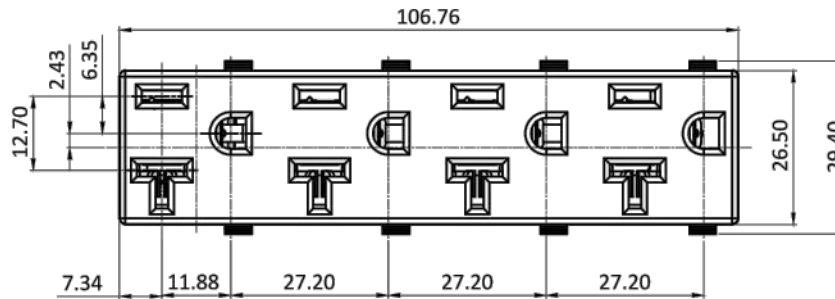
Rated current: 20A  
Rated Voltage: 125VAC  
Contact resistance ( initial ): 10 mohms max.  
Insulation resistance: 100Mohms min. @ 500VDC  
Dielectric withstanding voltage: 2000 VAC for 1 minute

**ENVIRONMENTAL SPECIFICATIONS:**

Operating temperature: 0°C to 65°C

SAFETY AGENCY APPROVAL: 

RoHS  
COMPLIANT



RECOMMENDED  
PANEL CUTOUT  
FOR 1.0mm to 2.0mm PANEL THICKNESS

REV	CHNG		CHK	APPR
	CHANGE			
	DATE			

TOLERANCE UNLESS OTHERWISE SPECIFIED			
X	±	1	
X.X	±	0.4	
X.XX	±	0.20	
DRAWN BY	PB	DATE:	1/4/21
CHECK BY	-	DATE:	-
APPR BY		DATE:	

<b>Power Dynamics, Inc.</b>	
Phone: 973 560-0019 Whippany, New Jersey Fax: 973 560-0076	
PART: 4 GANG NEMA 5-20R SNAP IN RECEPTACLE	
PART #:	PD-520R2-4121
SIZE:	A
SCALE:	NTS
SHEET	1 of 1
REV:	-

6

5

4

3

2

1