

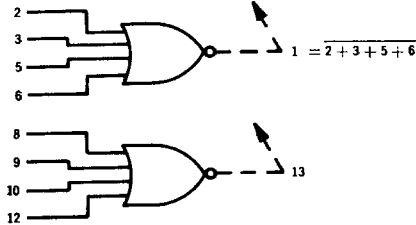
DUAL 4-INPUT EXPANDERS

MRTL MC900/800 series

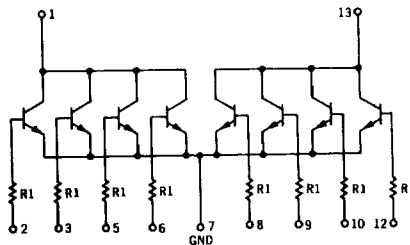
MC986 • MC886

Available in TO-86 flat package, add "F" suffix.

Two 4-input gate expanders housed in a single package may be used independently or combined. Each of these expanders increases the input capability of a standard MRTL gate by four.



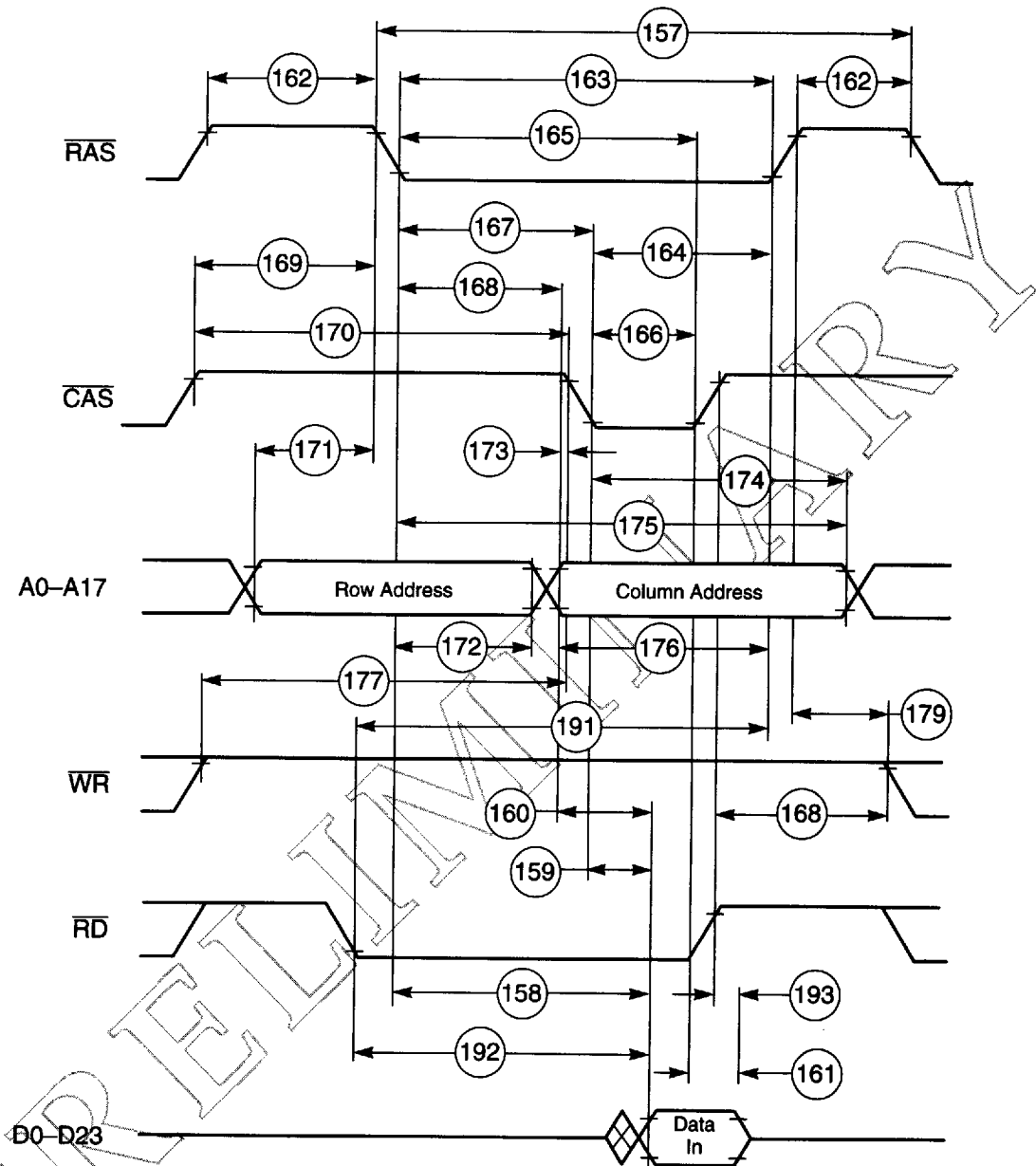
When an expander is added to a gate, subtract 0.4 load unit from the output of the gate for each expander circuit added.



VCC connection to pin 14 not shown.

TYPICAL RESISTANCE
VALUE
 $R1 = 450 \Omega$

62



AA0476

Figure 2-18 DRAM Out-of-Page Read Access

Preliminary Data