

Table with 3 columns: Item, Leadmaker, Mech Post Feed. Includes items -1, -2, -3.

Table with 3 columns: Part Number, Rev, First Used. Lists parts 1855337-1 through 7-1855337-7.

- RECOMMENDED SPARE PARTS.
GREASE LIGHTLY.
GUARD MUST BE IN PLACE WHEN OPERATING APPLICATOR IN A BENCH MACHINE.
LUBRICATE DAILY USING NO. 20 MACHINE OIL.
5. ITEMS WITH QTY OF REF SPECIFIED (EXCEPT ITEMS 78 AND 79) ARE USED ON ITEM 46.

GROUP I

Terminal Name: F-CRIMP MAG-MATE. Table with columns for Group I and Group II, listing STK numbers and wire sizes.

CRIMPING DATA. Table with columns for Ref, Crimp Height, Wire Size, Crimp Size, Type, Range, Insul, Feed, Appl Inst, Set Up Gage, Layout, and Wire Strip Length.

GROUP II

CRIMPING DATA. Table with columns for Ref, Crimp Height, Wire Size, Crimp Size, Type, Range, Insul, Feed, Appl Inst, Set Up Gage, Layout, and Wire Strip Length.

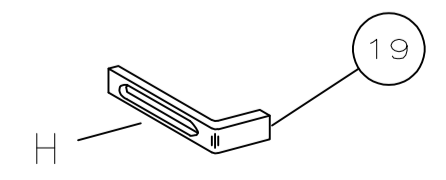
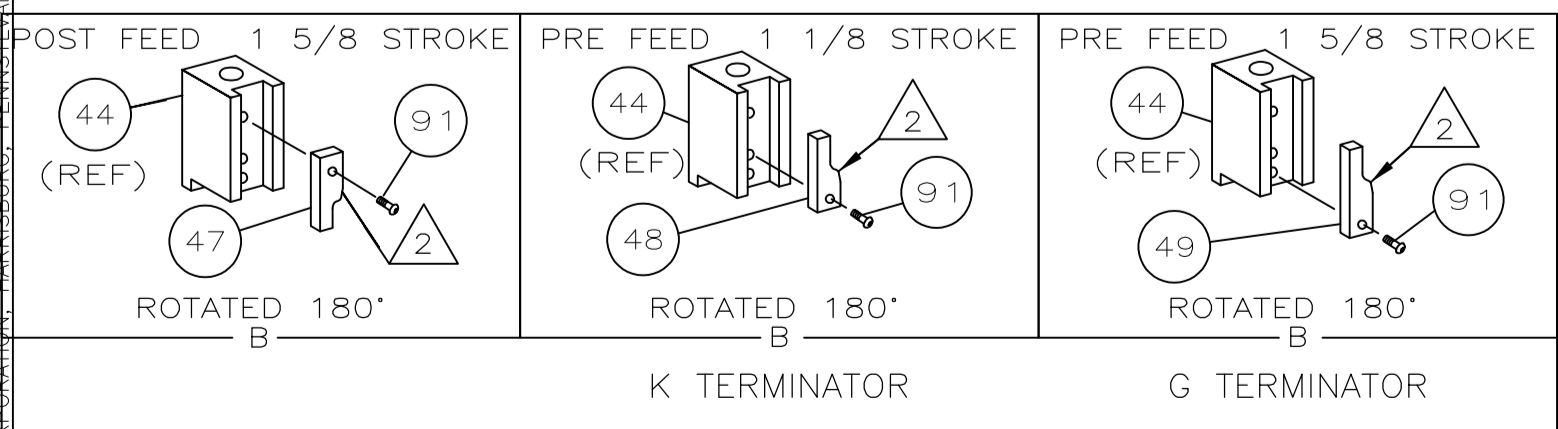
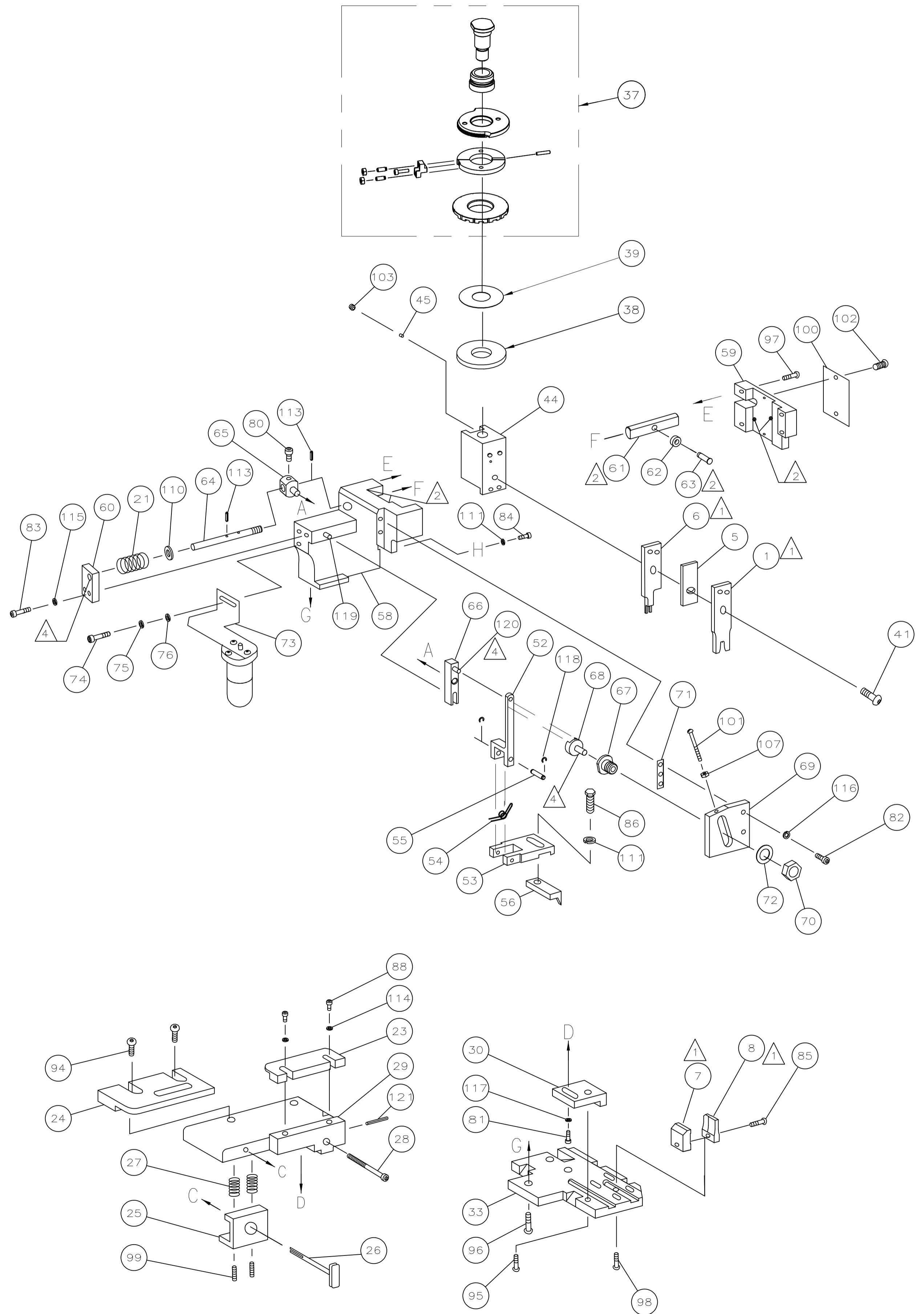
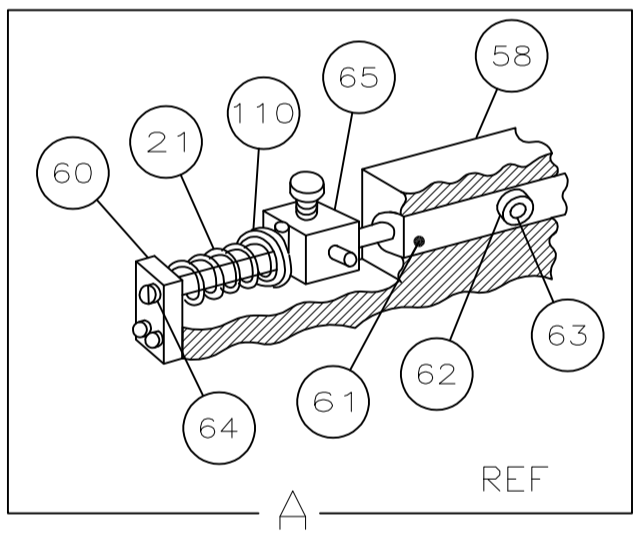
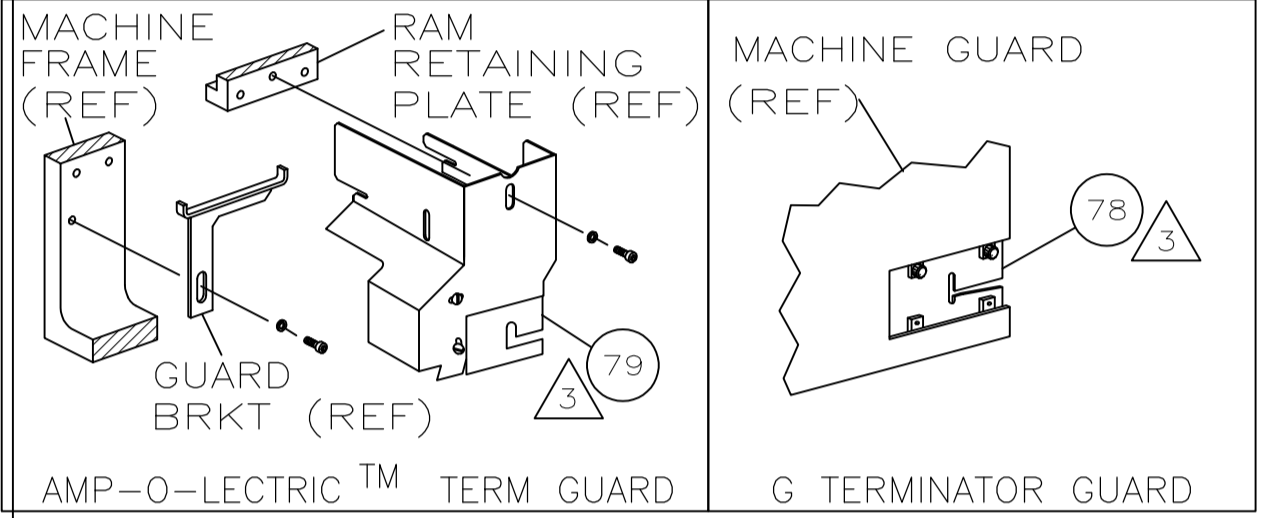
Main parts list table with columns: QTY REQD PER ASSY, PART NO, DESCRIPTION, ITEM NO. Includes items like GENERAL INSTRUCTION PACKAGE, SF APPL INST, PIN, SLT SPR, etc.

Main parts list table (continued) with columns: QTY REQD PER ASSY, PART NO, DESCRIPTION, ITEM NO. Includes items like NUT, HEX(1/2-20), PLATE, ADJUSTMENT, SHAFT, PIVOT, etc.

THIS INFORMATION IS CONFIDENTIAL AND PROPRIETARY TO TYCO ELECTRONICS CORPORATION AND ITS WORLDWIDE SUBSIDIARIES AND AFFILIATES. IT MAY NOT BE DISCLOSED TO ANY OTHER PARTY WITHOUT THE EXPRESS WRITTEN AUTHORIZATION OF TYCO ELECTRONICS CORPORATION, HARRISBURG, PENNSYLVANIA, USA.

LOC A, DIST 66

THIS DRAWING IS A CONTROLLED DOCUMENT.



LEADMAKER & BENCH MACHINE

LOC A  
DIST 66

REV	DESCRIPTION	DATE	BY	CHK
1	SEE SHEET 1			

DIMENSIONS:	TOLERANCES UNLESS OTHERWISE SPECIFIED:
INCHES	0 PLC ± .005
	1 PLC ± .002
	2 PLC ± .001
	3 PLC ± .0005
	4 PLC ± .0002

DWN	B.HIGMAN	100CT00	MATERIAL	-	HEAT TREAT	-
CHK	B.HIGMAN	100CT00	 TE CONNECTIVITY			
APVD	T.ELBIN	100CT00				
NAME	SIDE FEED HDM APPLICATOR					
SCALE	-	SIZE	A1	DRAWING NO	1855337	SHEET 2 of 2
REV						D

CUSTOMER ACCESSIBLE PRODUCTION DRAWING

THIS INFORMATION IS CONFIDENTIAL AND PROPRIETARY TO TYCO ELECTRONICS CORPORATION AND ITS WORLDWIDE SUBSIDIARIES AND AFFILIATES. IT MAY NOT BE DISCLOSED TO ANY OTHER PARTY WITHOUT THE WRITTEN AUTHORIZATION OF TYCO ELECTRONICS CORPORATION, PITTSBURGH, PENNSYLVANIA, USA.