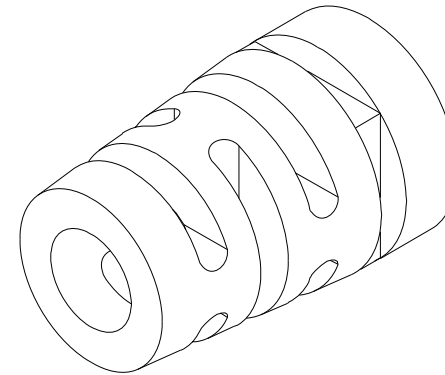
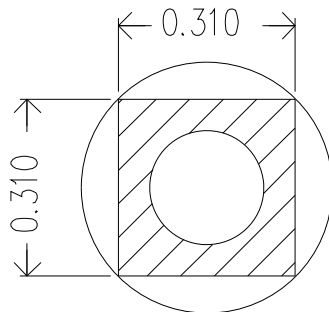
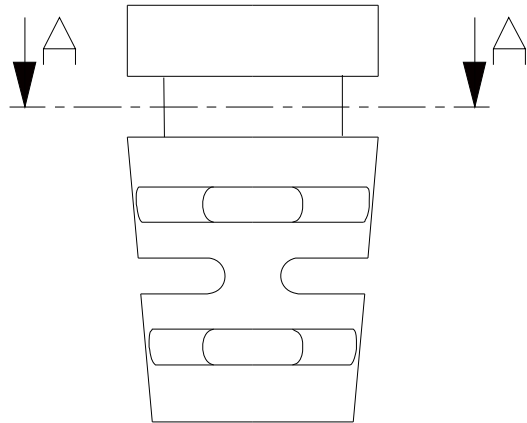
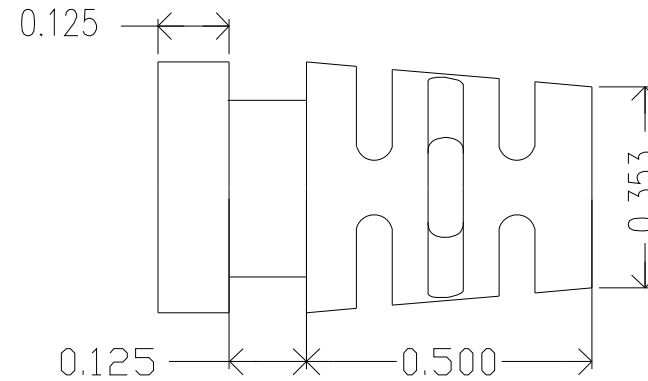
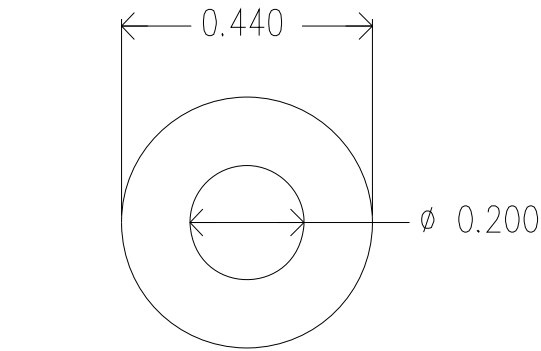


REVISIONS				
ZONE	REV.	DESCRIPTION	DATE	APPROVED



MOLD MATERIAL: ISC P/N: 5000214, PVC, M1472, BLK, RoHS

		DIMENSIONS ARE IN INCHES		NAME		DATE		ISC Engineering	
		TOLERANCES:		DRAWN		04/26/04		4351 Schaefer Ave, Chino, CA 91710	
		FRACTIONAL \pm		R FIERRO				Ph: 909-596-3315 Fax: 909-596-3335	
		ANGULAR: MACH \pm		CHECKED				www.iscengineering.com	
		BEND \pm		ENG APPR.				www.overmoldtooling.com	
		TWO PLACE DECIMAL \pm		MFG APPR.					
		THREE PLACE DECIMAL \pm		Q.A.					
		MATERIAL		COMMENTS:				1461080-.200-.125-.310X.310-.440-0	

NEXT ASSY		USED ON		FINISH				SIZE	
				---				A	
APPLICATION		DO NOT SCALE DRAWING						DWG. NO.	
								1467106	
								REV.	
								SCALE: 5:1	
								WEIGHT:	
								SHEET 1 OF 1	

Dimensions are subject to change.
PROPRIETARY AND CONFIDENTIAL
THE INFORMATION CONTAINED IN THIS DRAWING IS THE SOLE PROPERTY OF ISC ENGINEERING. ANY REPRODUCTION IN PART OR AS A WHOLE WITHOUT THE WRITTEN PERMISSION OF ISC ENGINEERING IS PROHIBITED.

ISC ENGINEERING
CONTROLLED COPY
Rich Fierro 09/08/2016

A-A