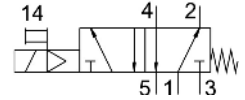


Air solenoid valve VSVA-B-M52-MD-D1-1R5L

FESTO

Part number: 561363



Data sheet

Feature	Value
Valve function	5/2, monostable
Actuation type	Electrical
Width	42 mm
Standard nominal flow rate	1300 l/min
Pneumatic working port	Sub-base, size 1 according to ISO 5599-1 G1/4
Operating voltage	24V DC
Operating pressure	0.3 MPa ... 1 MPa
Operating pressure	3 bar ... 10 bar
Structural design	Piston gate valve
Reset method	Mechanical spring
Certification	c UL us - Recognized (OL)
Degree of protection	IP65 NEMA 4
Nominal width	11 mm
Width dimension	43 mm
Exhaust air function	With flow control option Via throttle plate Via individual sub-base
Sealing principle	Soft
Mounting position	Any
Conforms to standard	ISO 5599-1
Manual override	Detenting Non-detenting
Type of control	Pilot-controlled
Pilot air supply port	Internal
Flow direction	Non-reversible
Symbol	00991003
Lap	Overlap
Signal status display	LED
Flow rate of pneumatic valve	2000 l/min
Flow rate of pneumatic valve on individual sub-base	1400 l/min
Optimized flow rate of pneumatic valve pneumatically concatenated flow	1300 l/min
Switching time off	60 ms
On switching time	22 ms
Duty cycle	100%
Max. positive test pulse with 0 signal	1400 µs

Feature	Value
Max. negative test pulse on 1 signal	900 µs
Coil characteristics	24 V DC: 1.6 W
Permissible voltage fluctuations	+/- 10 %
Operating medium	Compressed air as per ISO 8573-1:2010 [7:4:4]
Information on operating and pilot media	Operation with oil lubrication possible (required for further use)
Vibration resistance	Transport application test with severity level 2 as per FN 942017-4 and EN 60068-2-6
Shock resistance	Shock test with severity level 2 as per FN 942017-5 and EN 60068-2-27
Corrosion resistance class (CRC)	0 - No corrosion stress
LABS (PWIS) conformity	VDMA24364-B1/B2-L
Temperature of medium	-5 °C ... 50 °C
Relative air humidity	0 - 90 %
Pilot medium	Compressed air as per ISO 8573-1:2010 [7:4:4]
Ambient temperature	-5 °C ... 50 °C
Product weight	426 g
Electrical connection	3-pin M12x1 Central plug Round design
Type of mounting	On sub-base
Pneumatic connection 1	Sub-base, size 1 as per ISO 5599-1
Pneumatic connection 2	Sub-base, size 1 as per ISO 5599-1
Pneumatic connection 3	Sub-base, size 1 as per ISO 5599-1
Pneumatic connection 4	Sub-base, size 1 as per ISO 5599-1
Pneumatic connection 5	Sub-base, size 1 as per ISO 5599-1
Note on materials	RoHS-compliant
Seals material	FPM HNBR NBR
Housing material	Die-cast aluminum PA
Material of screws	Steel Galvanized