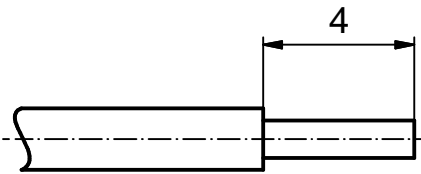


Directive 2002/95/EC
„RoHS“
Compliant

NOTES:

- 1. MATERIAL: COPPER ALLOY
- 2. PLATING: SEE TABLE
- 3. CRIMPING: USE CRIMP TOOL 360X10329X WITH TOOL INSERT 360X20039X
- ⓑ SELECTOR SETTINGS: 7 FOR AWG 24
6 FOR AWG 26
5 FOR AWG 28

STRIPPING DIMENSION

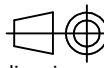


ⓑ	Plating	Part-No.
	min. 8µin HARD GOLD over min. 50µin NICKEL	131A15029X
	min. 30µin HARD GOLD over min. 50µin NICKEL	131C15029X
	min. 50µin HARD GOLD over min. 50µin NICKEL	131J15029X

THIS DRAWING MAY NOT BE COPIED OR REPRODUCED IN ANY WAY, AND MAY NOT BE PASSED ON TO A THIRD PARTY WITHOUT WRITTEN PERMISSION. OWNERSHIP AND COPYRIGHT OF CONEC GmbH

DO NOT ALTER CAD DRAWING BY HAND

				date	name
				drawn 29.04.08	Petker
				appd. 30.04.08	Mickenbecker
				norm	
				d-old	
3 x b	Ä 3706	03.08.10	Lehm.		
a	Origin				
rev.	description	date	name		

tolerance  dim. in mm

CONEC®

scale:	5.1	
material:	SEE NOTES	
title:	SIGNAL CRIMP CONTACT MALE CONTACT ⓑ Wire Size 24-28	
dwg no:	Inventor 10	DIN-A4
	16K1A2290	sh: 1
part no:	SEE TABLE	