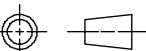
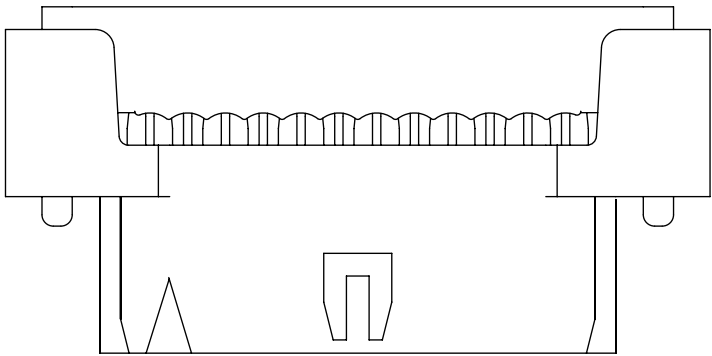


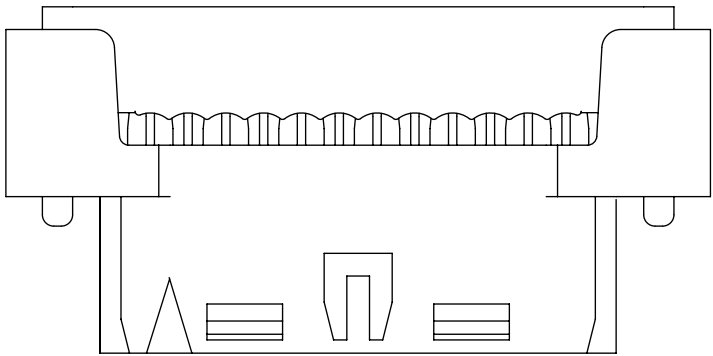
1. MATERIALS:  
HOUSING - PBT. GLASS FILLED UL94V-0 BLACK  
TERMINAL - COPPER ALLOY
2. FINISHES  
PLATING 3 - 15µin (0.38µm) SELECTIVE GOLD IN CONTACT AREA  
AND 75µin (1.88µm) TIN IN IDT AREA OVER 50µin (1.25µm)  
NICKEL OVERALL.  
PLATING 4 - 30µin (0.76µm) SELECTIVE GOLD IN CONTACT AREA  
AND 75µin (1.88µm) TIN IN IDT AREA OVER 50µin (1.25µm)  
NICKEL OVERALL.  
PLATING 5 - 2µin (0.05µm) SELECTIVE GOLD IN CONTACT AREA  
AND 75µin (1.88µm) TIN IN IDT AREA OVER 50µin (1.25µm)  
NICKEL OVERALL.
3. PRODUCT SPEC PS-87568-004 APPLIES.
4. FOR ILLUSTRATION PURPOSES, 12 CKT IS SHOWN.
5. PART MATES WITH ALL MILLIGRID HEADERS WITH MATING LENGTH (H5)  
BETWEEN 2.50mm AND 4.20mm WITH THE RIGHT KEYING OPTION.
6. PART IS DESIGNED FOR 1.00mm PITCH FLAT CABLE, 7 STRANDS,  
AWG #28, UL2651 AND UL2678.
7. ALL OTHER CIRCUIT SIZES, CONTACT FACTORY.
8. STRAIN RELIEF TO BE PURCHASED SEPERATELY.  
REFER TO SD-87569-008.
9. PACKAGING SPECIFICATION :PK-87568-0001.

RELEASE STATUS	P1	RELEASE DATE	2023/05/13	01:47:28
----------------	----	--------------	------------	----------

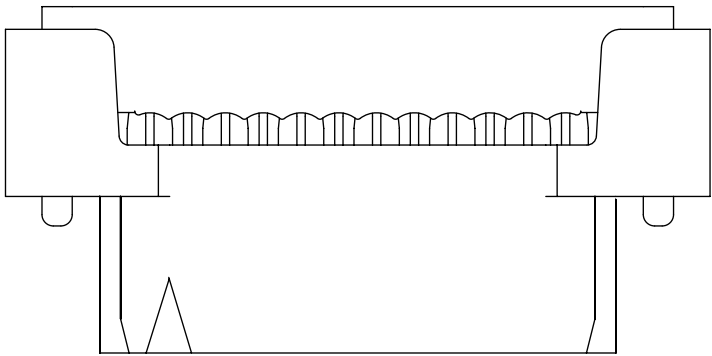
THIS DRAWING CONTAINS INFORMATION THAT IS PROPRIETARY TO MOLEX ELECTRONIC TECHNOLOGIES, LLC AND SHOULD NOT BE USED WITHOUT WRITTEN PERMISSION																
EC NO: 749397 DRWN: SUAIFR CHK'D: SUAIFR APPR: MRAMAKRISHNA	2023/05/12 2023/05/12 2023/05/13	GENERAL TOLERANCES (UNLESS SPECIFIED)			DIMENSION UNITS		SCALE		molex®							
		MM		INCH		MM		NTS								
		4 PLACES		±	±	DRWN BY		DATE								
		3 PLACES		±	±	AGARWAL		1997/08/05		MGRID 2MM DUAL ROW IDT RECEPTACLE						
		2 PLACES		±	0.15	±	CHK'D BY		DATE							
		1 PLACES		±	±	SQUEK		1997/09/03								
		0 PLACES		±	±	APPR BY		DATE		PRODUCT CUSTOMER DRAWING						
		MLONG		2009/11/13												
		ANGULAR TOL ± 3.0			DRAWING SIZE		THIRD ANGLE PROJECTION									
		DRAFT WHERE APPLICABLE MUST REMAIN WITHIN DIMENSIONS			A3					SERIES		MATERIAL NUMBER		CUSTOMER		
H5		REV							87568		SEE TABLE		GENERAL MARKET			
						DOCUMENT NUMBER				DOC TYPE		DOC PART		SHEET NUMBER		
						SD-87568-003				PSD		001		1 OF 3		



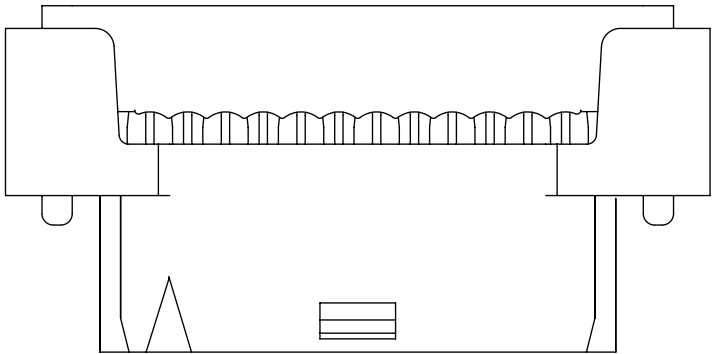
87568-\*\*4\*  
POLARIZATION ONLY  
(APPLICABLE FOR 14 TO 50CKT)



87568-\*\*9\*  
POLARIZATION AND RAMP LOCKING  
(APPLICABLE FOR 14 TO 50 CKT)

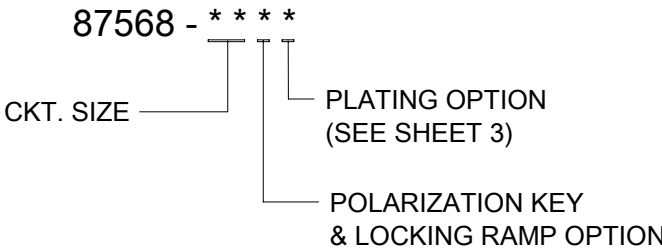


87568-\*\*6\*  
NO POLARIZATION/RAMP FEATURE  
(APPLICABLE FOR 10 TO 50 CKT)

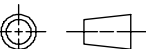


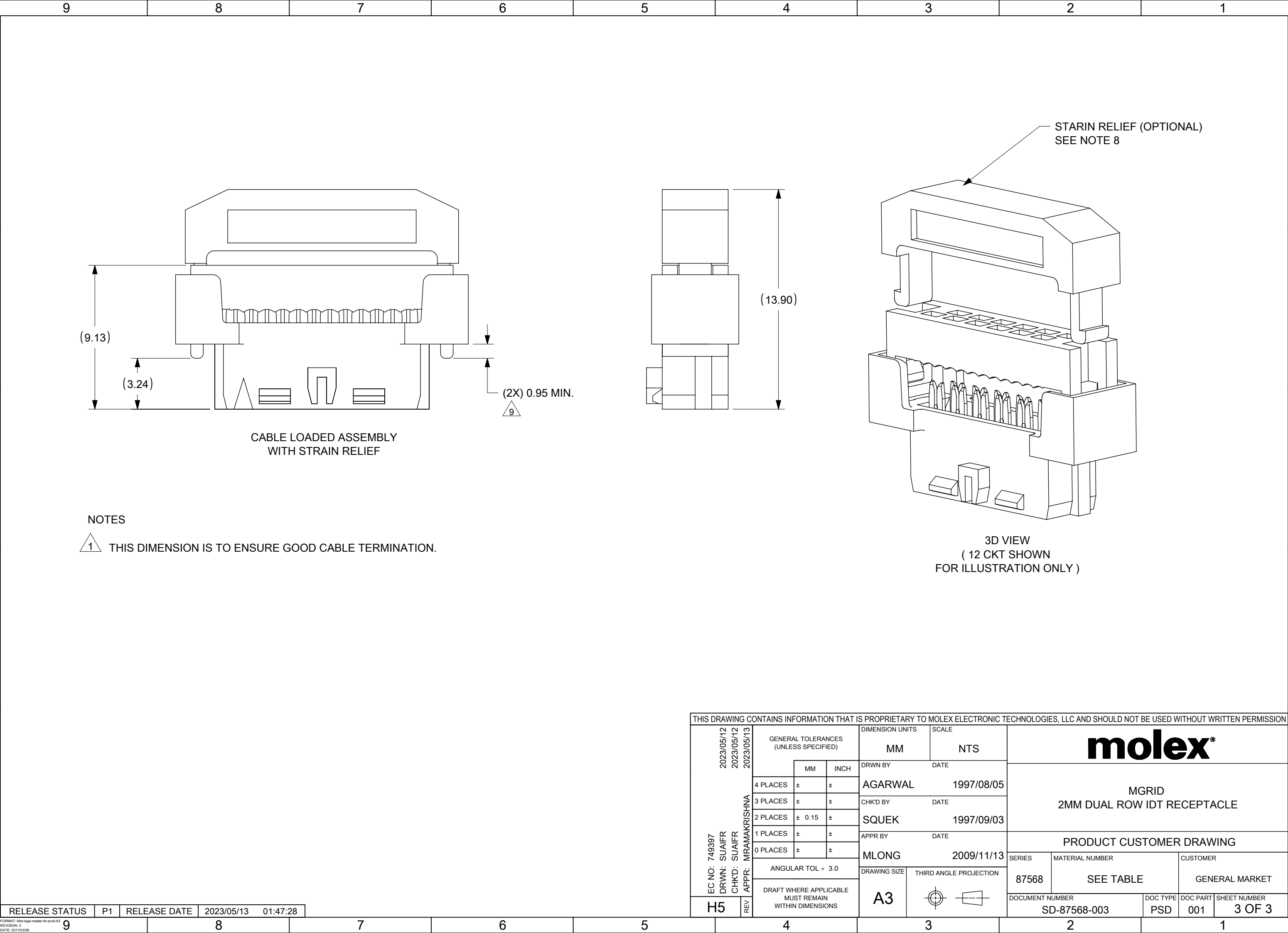
87568-\*\*7\*  
SINGLE RAMP LOCKING ONLY  
(APPLICABLE FOR 10 TO 12 CKT)

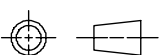
ENGINEERING NUMBER	CKT. SIZE	A	B	C	D	E
87568-10**	10	16.65	8.00	14.90	11.65	10.55
87568-12**	12	18.65	10.00	16.90	13.65	12.55
87568-14**	14	20.65	12.00	18.90	15.65	14.55
87568-16**	16	22.65	14.00	20.90	17.65	16.55
87568-20**	20	26.65	18.00	24.90	21.65	20.55
87568-22**	22	28.65	20.00	26.90	23.65	22.55
87568-24**	24	30.65	22.00	28.90	25.65	24.55
87568-26**	26	32.65	24.00	30.90	27.65	26.55
87568-30**	30	36.65	28.00	34.90	31.65	30.55
87568-32**	32	38.65	30.00	36.90	33.65	32.55
87568-34**	34	40.65	32.00	38.90	35.65	34.55
87568-36**	36	42.65	34.00	40.90	37.65	36.55
87568-40**	40	46.65	38.00	44.90	41.65	40.55
87568-44**	44	50.65	42.00	48.90	45.65	44.55
87568-50**	50	56.65	48.00	54.90	51.65	50.55



- 4 - WITH POLARIZATION ONLY FOR 14-50 CKT  
6 - WITHOUT POLARIZATION AND RAMP LOCKING  
7 - WITH SINGLE RAMP LOCKING ONLY FOR 10 & 12 CKT  
9 - WITH POLARIZATION AND RAMP LOCKING 14 - 50 CKT  
10-12 CIRCUIT SIZE HAS ONLY ONE RAMP FOR LOCKING (OPTIONAL)  
14-50 CIRCUIT SIZE HAS BOTH POLARIZATION AND RAMP LOCKING (OPTIONAL)

THIS DRAWING CONTAINS INFORMATION THAT IS PROPRIETARY TO MOLEX ELECTRONIC TECHNOLOGIES, LLC AND SHOULD NOT BE USED WITHOUT WRITTEN PERMISSION													
EC NO: 749397 DRWN: SUAIFR CHK'D: SUAIFR APPR: MRAMAKRISHNA	2023/05/12 2023/05/12 2023/05/13	GENERAL TOLERANCES (UNLESS SPECIFIED)			DIMENSION UNITS		SCALE		<div>molex®</div> <div>MGRID</div> <div>2MM DUAL ROW IDT RECEPTACLE</div>				
			MM	INCH	DRWN BY		DATE						
		4 PLACES	±	±	AGARWAL		1997/08/05						
		3 PLACES	±	±	CHK'D BY		DATE						
		2 PLACES	± 0.15	±	SQUEK		1997/09/03						
		1 PLACES	±	±	APPR BY		DATE						
		0 PLACES	±	±	MLONG		2009/11/13		PRODUCT CUSTOMER DRAWING				
		ANGULAR TOL ± 3.0			DRAWING SIZE		THIRD ANGLE PROJECTION		SERIES	MATERIAL NUMBER		CUSTOMER	
		DRAFT WHERE APPLICABLE MUST REMAIN WITHIN DIMENSIONS			A3				87568	SEE TABLE		GENERAL MARKET	
									DOCUMENT NUMBER		DOC TYPE		DOC PART
H5	REV							SD-87568-003		PSD	001	2 OF 3	



					THIS DRAWING CONTAINS INFORMATION THAT IS PROPRIETARY TO MOLEX ELECTRONIC TECHNOLOGIES, LLC AND SHOULD NOT BE USED WITHOUT WRITTEN PERMISSION																										
EC NO: 749397 DRWN: SUAIFR CHK'D: SUAIFR APPR: MRAMAKRISHNA					GENERAL TOLERANCES (UNLESS SPECIFIED)					DIMENSION UNITS			SCALE			molex®															
										MM			NTS																		
					2023/05/12 2023/05/12 2023/05/13								MM			INCH			DRWN BY			DATE			MGRID 2MM DUAL ROW IDT RECEPTACLE						
										4 PLACES			±			±			AGARWAL			1997/08/05									
										3 PLACES			±			±			CHK'D BY			DATE									
										2 PLACES			± 0.15			±			SQUEK			1997/09/03									
										1 PLACES			±			±			APPR BY			DATE									
										0 PLACES			±			±			MLONG			2009/11/13									
										ANGULAR TOL ± 3.0					DRAWING SIZE			THIRD ANGLE PROJECTION													
										DRAFT WHERE APPLICABLE MUST REMAIN WITHIN DIMENSIONS					A3																
H5					REV																										
RELEASE STATUS					P1					RELEASE DATE					2023/05/13					01:47:28											