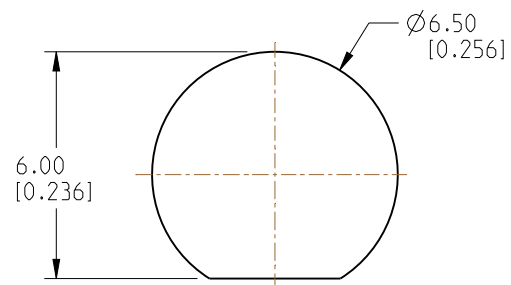


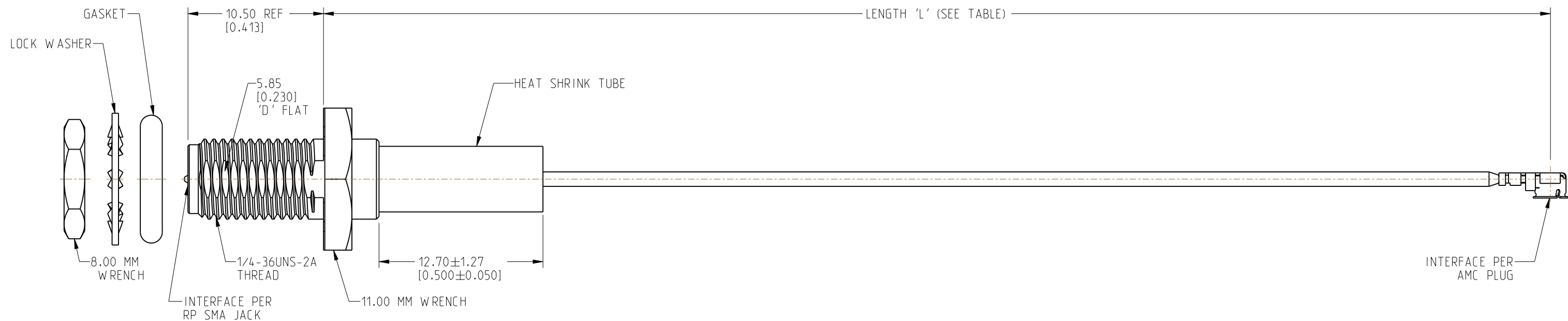
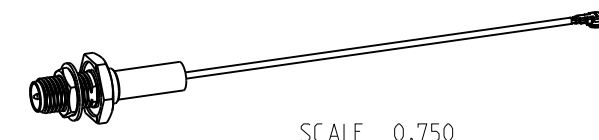
NOTES:

- 1. MATERIALS AND FINISHES:  
 RP SMA STR BHD JACK - BRASS, GOLD PLATING  
  
 AMC RA PLUG:  
 BODY - PHOSPHOR BRONZE, SILVER PLATING  
 CONTACT - PHOSPHOR BRONZE, GOLD PLATING  
  
 CABLE - RG 178
- 2. ELECTRICAL:  
 A. IMPEDANCE: 50 OHM
- 3. PACKAGING:  
 A. QUANTITY: SINGLE PACK  
 B. MARKING: BAG TO BE MARKED  
 "AMPHENOL RF, 95-902-578-XXX AND DATE CODE"

REVISIONS				
REV	DESCRIPTION	DATE	ECN	BY
A	RELEASE TO MFG.	--	--	SG



**RECOMMENDED MOUNTING HOLE DIMENSIONS**



LENGTH TABLE	
PART NUMBER (IMPERIAL)	LENGTH AND TOLERANCE 'L' IN MM (INCHES)
95-902-578-050	50.00 ± 3.81 [1.969 ± 0.150]
95-902-578-100	100.00 ± 3.81 [3.937 ± 0.150]
95-902-578-150	150.00 ± 3.81 [5.906 ± 0.150]
95-902-578-200	200.00 ± 5.08 [7.874 ± 0.200]
95-902-578-250	250.00 ± 5.08 [9.843 ± 0.200]
95-902-578-300	300.00 ± 5.08 [11.811 ± 0.200]

**PRELIMINARY ISSUE**

DESIGN REQUIREMENTS:

- FREQUENCY: DC - 6 GHz
- CONTINUITY
- VSWR: \_\_\_\_\_ MAX.
- HI-POT: 200 VRMS
- INS. LOSS: \_\_\_\_\_ dB MAX.
- OTHER:

**CUSTOMER OUTLINE DRAWING**

ALL OTHER SHEETS ARE FOR INTERNAL USE ONLY

NOTICE: These drawings, specifications, or other data (1) are, and remain the property of Amphenol corp. (2) must be returned upon request; and (3) are confidential and not to be disclosed to any person other than those to whom they are given by Amphenol Corp. The furnishing of these drawings, specifications, or other data by Amphenol Corp., or to any other person to anyone for any purpose is not to be regarded by implication or otherwise in any manner licensing, granting rights to permitting such holder or any other person to manufacture, use or sell any product, process or design, patented or otherwise, that may in any way be related to or disclosed by said drawings, specifications, or other data.

UNLESS OTHERWISE SPECIFIED DIMENSIONS ARE METRIC (INCHES) AND TOLERANCES ARE:  
 <0.5mm = ±0.05mm [ $<0.020 = \pm 0.002$ ]  
 0.5 - 6mm = ±0.1mm [ $0.020 - 0.236 = \pm 0.004$ ]  
 >6.00 - 30mm = ±0.2mm [ $0.236 - 1.181 = \pm 0.008$ ]  
 >30.00 - 120mm = ±0.3mm [ $1.181 - 4.725 = \pm 0.012$ ]

MATERIAL: SEE NOTES  
 ENGR.1: SIVA  
 ENGR.2:  
 DATE: 09-JUN-22

TITLE: RP SMA STR BHD JACK TO AMC RA PLUG USING RG 178 CABLE VARIOUS LENGTH  
 SHEET NO. 2 OF 2  
 SCALE: 3.3:1.0

Amphenol RF		SIZE: B	DRAWING NO. 95-902-578-XXX	REV: A
			ITEM NO. 95-902-578-XXX	
			PART NO. 95-902-578-XXX	

THIRD ANGLE PROJ. REFERENCE EAR# 11265

ANGLES = ±1°

DATE: 09-JUN-22

SHEET NO. 2 OF 2 SCALE: 3.3:1.0

DRAWING NO. 95-902-578-XXX  
 ITEM NO. 95-902-578-XXX  
 PART NO. 95-902-578-XXX