

MICRO SWITCH

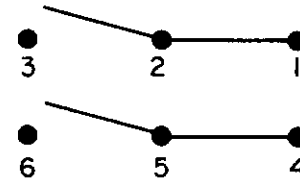
SWITCH - TOGGLE FLUSH KEY

CATALOG LISTING
2TP8-70

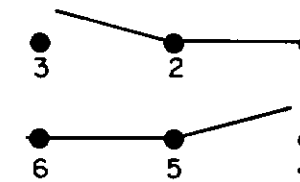
THIS DRAWING COVERS A PROPRIETARY ITEM AND IS THE PROPERTY OF MICRO SWITCH, A DIVISION OF HONEYWELL. THIS DRAWING IS NOT TO BE COPIED OR USED WITHOUT THE APPROVAL OF MICRO SWITCH.

CIRCUIT DIAGRAM CIRCUIT MADE WITH LEVER DEPRESSED ON

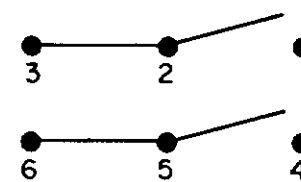
LUG SIDE
(MOMENTARY POSITION)



CENTER
(MAINTAINED POSITION)



OPPOSITE LUG
(MOMENTARY POSITION)

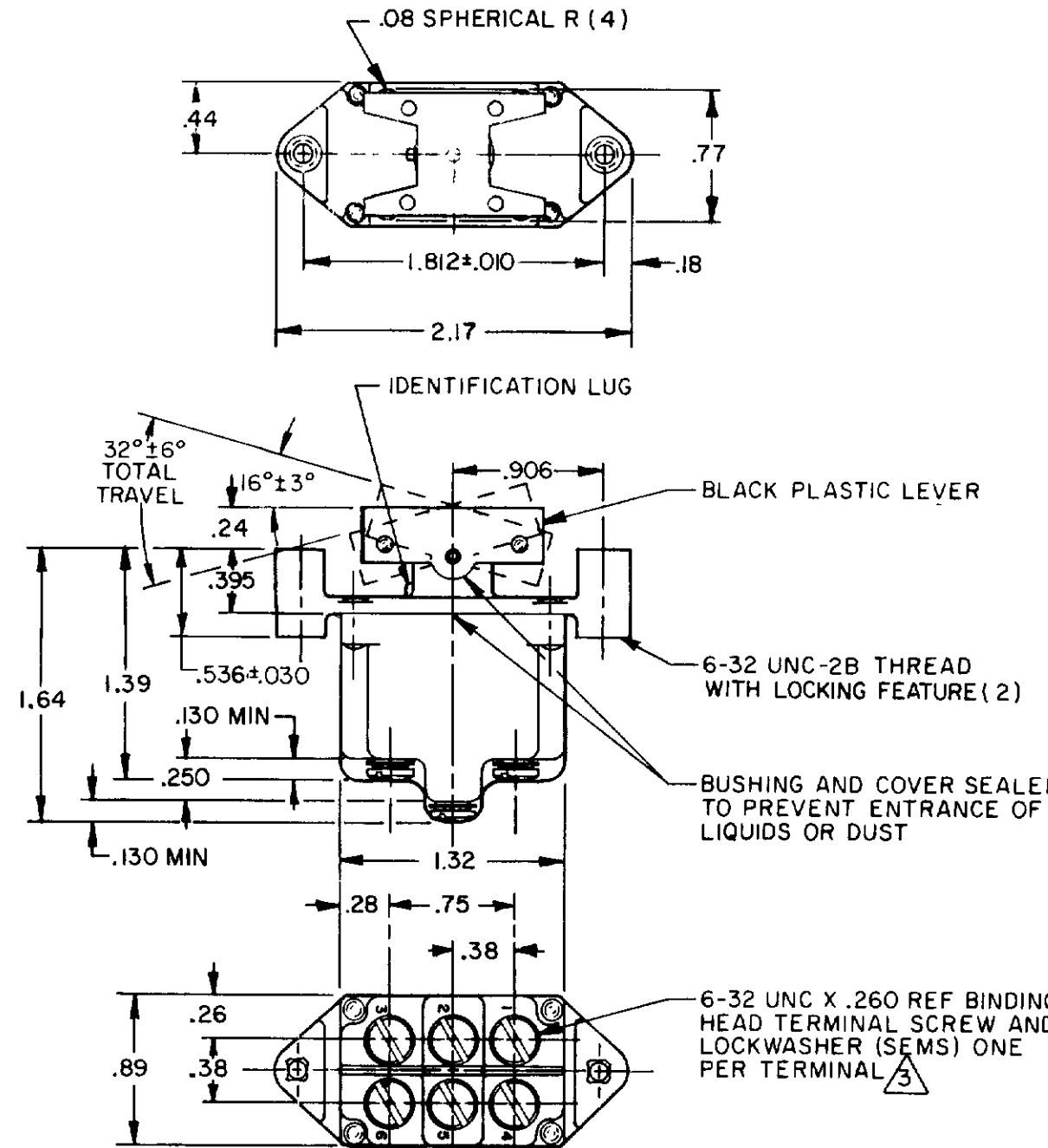


ELECTRICAL DATA

10A-125, 250, 277VAC
 1/4HP-125VAC; 1/2HP-250, 277VAC
 3A-125VAC "L" L192



DRAWING NUMBER **2TP8-70**
 PAGE 1 OF 1
 RELEASE NO PR-3145
 REPLACES
 ISSUE **M**
9
 REVISIONS
 A RE-INS PR-11234 21 MAY 82
 B CO57496B C J H 24 SEP 85
 C CO58717-B W J K 22 OCT 86
 D CO77897 W J H 10 NOV 88
 E 200032 J J A 21 JAN 00
 F 202714 D L T 4 APR 01
 DRAWN T M M 21 MAY 82
 CHECK C E B 1 JUNE 82
 RASTER FO-52854-C



- NOTES
- 1 - THESE SWITCHES WILL WITHSTAND TEMPERATURE OF 160°F
 - 2 - MICRO SWITCH CATALOG LISTING MARKED ON SIDE OF SWITCH
 - 3 - SCREWS FURNISHED UNASSEMBLED

THIRD ANGLE PROJECTION

SCALE FULL

DO NOT SCALE PRINT

TOLERANCES

APPLY TO DESIGN UNITS. CONVERSIONS ARE ONLY FOR REFERENCE. UNLESS NOTED, TOLERANCES ARE ±

	DI	TOL	DI	TOL
	mm	mm/in	in	mm/in
NO PLACES	X	1/04	X	0.01/03
ONE PLACE	X X	0.4/015	X X	0.38/015
TWO PLACES	X X X	0.15/005	X X X	0.15/005
THREE PLACES	X X X X		X X X X	
ANGLES				

DESIGN UNITS SI METRIC US CUSTOMARY

RAW MATERIAL - COMMERCIAL STANDARD
 MICRO SWITCH STANDARDS APPLY
 DIMENSIONS ARE TO BE MET BEFORE
 PROTECTIVE COATINGS ARE APPLIED

WEIGHT .14 LB. EST.