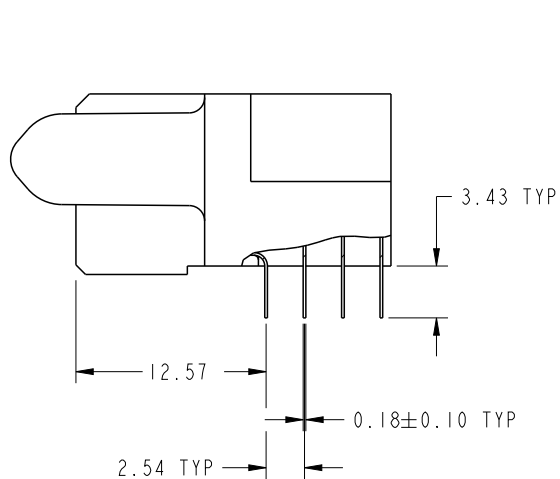
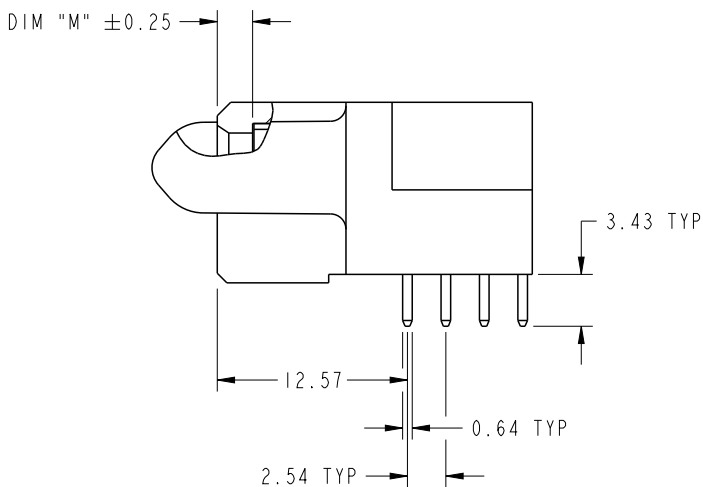


PRODUCT NUMBER

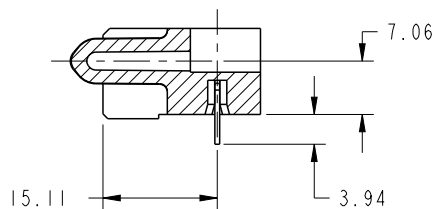
51915-510LF



BROKEN-OUT SECTION A-A
SCALE 2:1



BROKEN-OUT SECTION B-B
SCALE 2:1

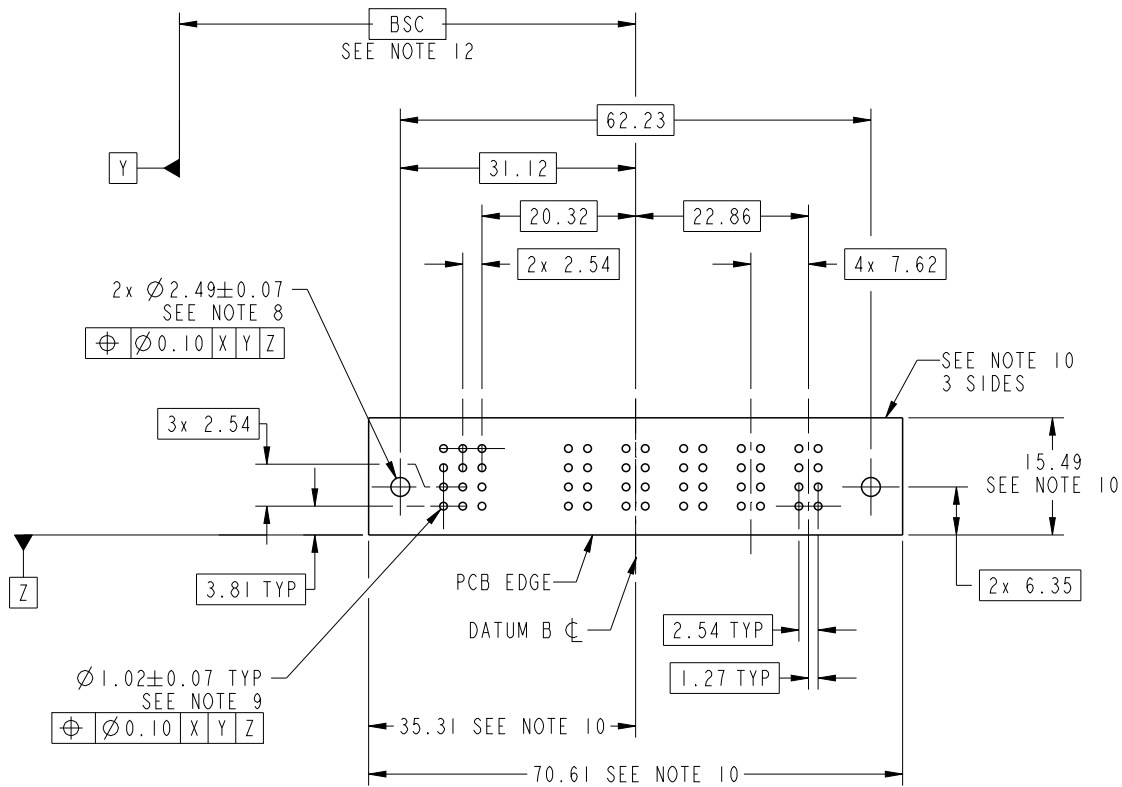


SECTION C-C

dr	De-Ming Lu	2015/09/05	projection 	MM ←————→	size	A4	scale	1:1
eng	De-Ming Lu	2015/09/11			ecn no	-		
chr	Fancy Zhang	2015/09/11			rel level	Released		
appr	Pei-Ming Zheng	2015/09/11	product family	PwrBlade	rev	A		
		title	6ACP + 12S R/A SOLDER RECEPTACLE		dwg no	51915-510		
www.fci.com		cat. no.	Product - Customer Drw			sheet 2 of 4		

PRODUCT NUMBER

51915-510LF



RECOMMENDED PCB LAYOUT

dr	De-Ming Lu	2015/09/05	projection 	MM 	size	A4	scale	1:1
eng	De-Ming Lu	2015/09/11			ecn no	-		
chr	Fancy Zhang	2015/09/11			rel level	Released		
appr	Pei-Ming Zheng	2015/09/11	product family	PwrBlade	rel level	Released		
		title 6ACP + 12S R/A SOLDER RECEPTACLE	dwg no 51915-510	rev A				
www.fci.com		cat. no.	Product - Customer Drw		sheet 3 of 4			

PRODUCT NUMBER

51915-510LF

NOTES:

1. DIMENSIONS AND TOLERANCES ARE IN ACCORDANCE WITH ASME Y14.5M, 1994 UNLESS OTHERWISE SPECIFIED.

CONNECTOR NOTES:

2. HOUSING MATERIAL: UL 94 V-0 GLASS FILLED HIGH-TEMP THERMOPLASTIC
POWER CONTACT MATERIAL: COPPER ALLOY
SIGNAL PIN MATERIAL: COPPER ALLOY

3. SEE FCI PLATING SPEC 10064183.

4. MANUFACTURER'S NAME, DATE CODE AND OPTIONAL P/N TO APPEAR ON THIS SURFACE. THE MARK CAN BE OMITTED IF THERE IS NOT ENOUGH SPACE ON THIS SURFACE.

5. PRODUCT SPECIFICATION GS-12-149.
APPLICATION SPECIFICATION BUS-20-067.

6. PACKAGED IN TRAYS.

PCB NOTES:

7. ALL HOLE DIAMETERS ARE FINISHED HOLE SIZE.

8. MOUNTING HOLES, WHERE APPLICABLE, ARE UNPLATED.

9. $\varnothing 1.151 \pm 0.025$ DRILLED HOLES PLATED WITH
0.008 MIN SnPb OR Sn OVER 0.03
TO 0.08 Cu PLATING TO ACHIEVE
 $\varnothing 1.02 \pm .07$ HOLE.

10. CONNECTOR KEEP-OUT ZONE.

11. THE VOID CORING IN BETWEEN POWER MODULES, SIGNAL MODULES AND END MODULES ARE OPTIONAL AND THE SHAPE MAY BE DIFFERENT FOR OPTIMIZE THE MOLDING PROCESS. THE VOID CORING WILL NOT EFFECT TO PRODUCT FUNCTION.

12. DATUM AND BASIC DIMENSIONS ARE ESTABLISHED BY CUSTOMER.

dr	De-Ming Lu	2015/09/05	projection 	MM 	size	A4	scale	1:1		
eng	De-Ming Lu	2015/09/11			ecn no	-				
chr	Fancy Zhang	2015/09/11			product family	PwrBlade	rel level	Released		
appr	Pei-Ming Zheng	2015/09/11	www.fci.com		title	6ACP + 12S R/A SOLDER RECEPTACLE	dwg no	51915-510	rev	A
cat. no.		Product - Customer Drw			sheet 4 of 4					