

NOTES :

1. MATERIAL :

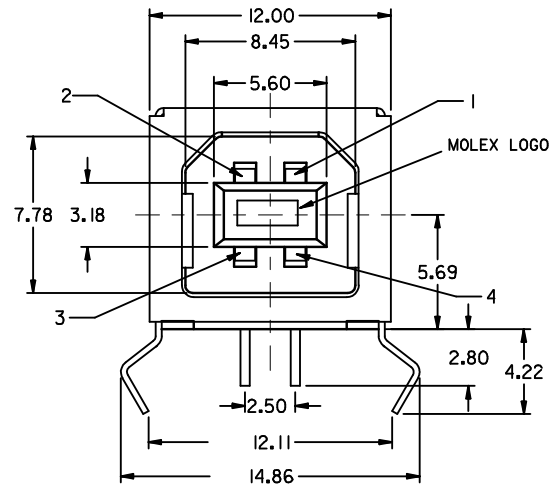
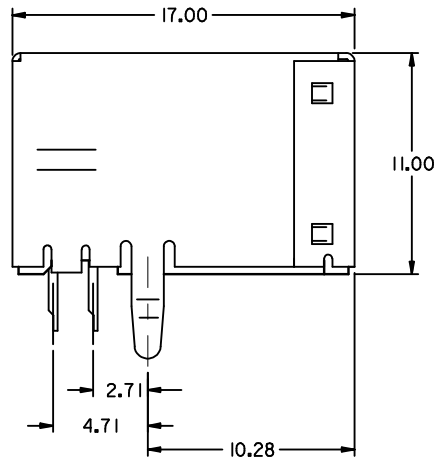
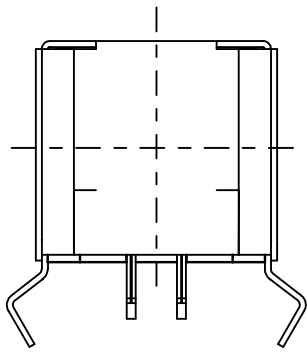
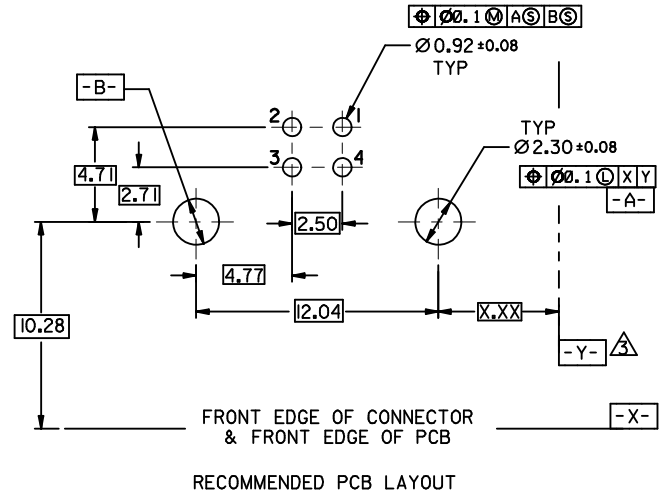
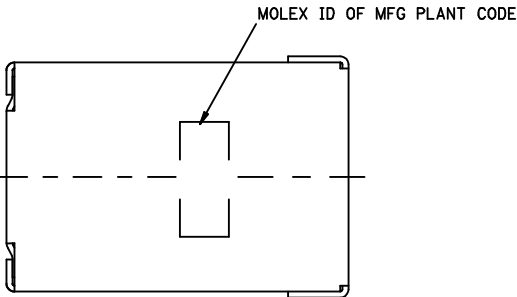
HOUSING : (a) HIGH TEMP. NYLON ,GLASS FIBER FILLED,UL94V-0, COLOR: BLACK,
 (b) POLYESTER , GLASS FIBER FILLED,UL94V-0, COLOR: WHITE,
 TERMINAL : PHOSPHOR BRONZE
 METAL SHELL : COPPER ALLOY

2. PLATING :

TERMINAL :
 CONTACT AREA : (a) GOLD FLASH.
 (b) GLOD (Au), THICKNESS = 30 MICROINCH MINIMUM.
 /0.76 MICROMETER MINIMUM.
 SOLDER TAIL : TIN-LEAD (Sn-Pb) ALLOY,
 THICKNESS= 75 MICROINCH MINIMUM .
 /1.9 MICROMETER MINIMUM.
 UNDER PLATE : NICKEL (NI), THICKNESS= 50 MICROINCH MINIMUM.
 /1.27 MICROMETER MINIMUM.
 METAL SHELL :
 TIN-LEAD (Sn-Pb) ALLOY ,THICKNESS= 100 MICROINCH MINIMUM.
 /2.54 MICROMETER MINIMUM.
 UNDER PLATE : NICKEL (NI), THICKNESS= 50 MICROINCH MINIMUM.
 /1.27 MICROMETER MINIMUM.

△ DATUM AND BASIC DIMENSIONS ESTABLISHED BY CUSTOMER
 RECOMMENDED PCB THICKNESS : 1.60±0.05

4 PRODUCT SPECIFICATION : REFER TO PS-67998-0000



PART NUMBER LEGEND:

67068-

- * : BLACK HOUSING
- * : WHITE HOUSING
- * : TRAY PACKAGING
- * : TUBE PACKAGING
- 0 : GOLD FLASH
- 1 : 0.76 MICROMETER/30 MICROINCH GOLD
- 0 : KINK TYPE BOARD LOCK

| | |
|--------------------|-------------|
| REVISED | DESCRIPTION |
| EC NO: SH2006-0759 | 2006/10/26 |
| DRWN: FANG05 | 2006/10/27 |
| CHKD: HWANG | 2006/11/14 |
| APPR: JINCHEN | |

| QUALITY SYMBOLS | VALUE |
|-----------------|-------|
| ▽=0 | |
| ∇=0 | |

| GENERAL TOLERANCES (UNLESS SPECIFIED) | |
|--|--------|
| | mm |
| 4 PLACES | ± 0.15 |
| 3 PLACES | ± 0.25 |
| 2 PLACES | ± 0.38 |
| 1 PLACE | ± 0.51 |
| ANGULAR ± 3° | |
| DRAFT WHERE APPLICABLE MUST REMAIN WITHIN DIMENSIONS | |

| DIMENSION STYLE | |
|-----------------|----------------|
| INCH ONLY | |
| DRAWN BY | DATE |
| VINCENT LIN | |
| CHECKED BY | DATE |
| APPROVED BY | DATE |
| MATERIAL NO. | DOCUMENT NO. |
| SEE TABLE | SDA-67068-**** |

| | |
|--|--------------|
| SCALE | DESIGN UNITS |
| 4:1 | METRIC |
| THIRD ANGLE PROJECTION | |
| TITLE | |
| USB B TYPE CONNECTOR KINK TYPE BOARD LOCK | |
| MOLEX INCORPORATED | |
| SHEET NO. | 1 OF 4 |

| | |
|---|--|
| THIS DRAWING CONTAINS INFORMATION THAT IS PROPRIETARY TO MOLEX INCORPORATED AND SHOULD NOT BE USED WITHOUT WRITTEN PERMISSION | |
|---|--|

NOTES :

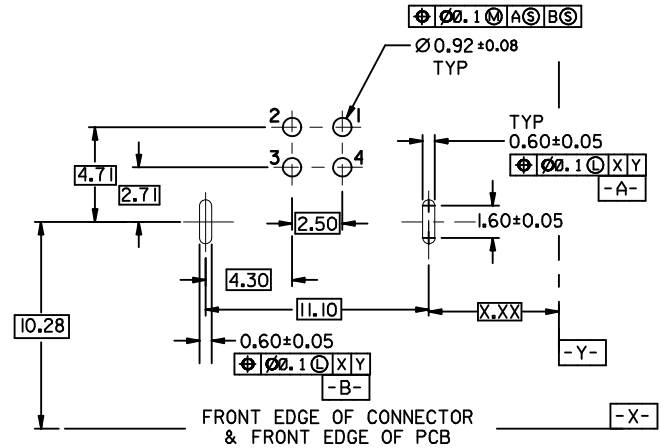
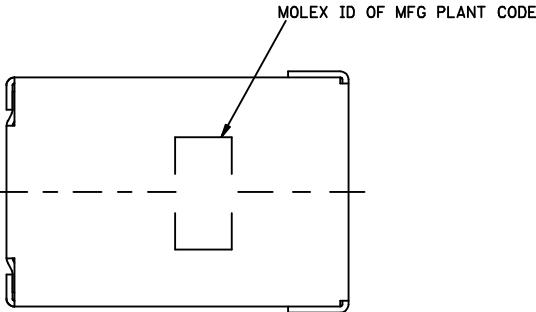
1. MATERIAL :

HOUSING : (a) HIGH TEMP. NYLON, GLASS FIBER FILLED,UL94V-0, COLOR: BLACK,
 (b) POLYESTER , GLASS FIBER FILLED,UL94V-0, COLOR: WHITE,
 TERMINAL : PHOSPHOR BRONZE
 METAL SHELL : COPPER ALLOY

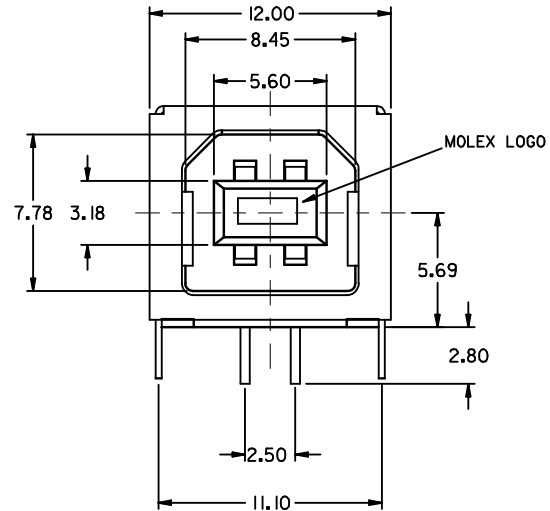
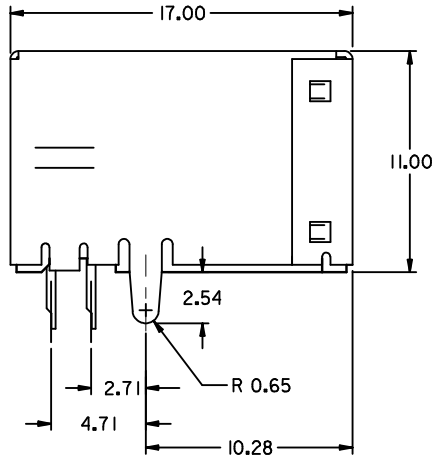
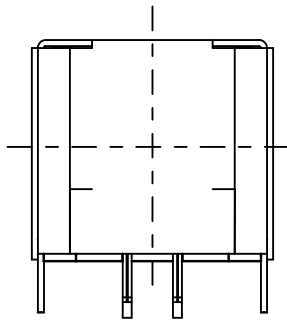
2. PLATING :

TERMINAL :
 CONTACT AREA : (a) GOLD FLASH.
 (b) GLOD (Au), THICKNESS = 30 MICROINCH MINIMUM.
 /0.76 MICROMETER MINIMUM.
 SOLDER TAIL : TIN-LEAD (Sn-Pb) ALLOY,
 THICKNESS= 75 MICROINCH MINIMUM .
 /1.9 MICROMETER MINIMUM.
 UNDER PLATE : NICKEL (Ni), THICKNESS= 50 MICROINCH MINIMUM.
 /1.27 MICROMETER MINIMUM.
 METAL SHELL :
 TIN-LEAD (Sn-Pb) ALLOY , THICKNESS= 100 MICROINCH MINIMUM.
 /2.54 MICROMETER MINIMUM.
 UNDER PLATE : NICKEL (Ni), THICKNESS= 50 MICROINCH MINIMUM.
 /1.27 MICROMETER MINIMUM.

3 DATUM AND BASIC DIMENSIONS ESTABLISHED BY CUSTOMER
 RECOMMENDED PCB THICKNESS : 1.60±0.05
 4 PRODUCT SPECIFICATION : REFER TO PS-67998-0000



RECOMMENDED PCB LAYOUT



PART NUMBER LEGEND(EXCEPT 67068-1111&67068-0011):

67068-

- 0 : BLACK HOUSING
- 1 : WHITE HOUSING
- 0 : TRAY PACKAGING
- 1 : TUBE PACKAGING

- 0 : GOLD FLASH
- 1 : 0.76 MICROMETER (30 MICROINCH GOLD)
- STRAIGHT TAB

| | | |
|---------|--------------------|------------|
| REVISED | EC NO: SH2006-0759 | 2006/10/26 |
| | DRWN: YANG05 | 2006/10/27 |
| | CHKD: HWANG | 2006/11/14 |
| | APPR: JINCHEN | |
| REV | DESCRIPTION | |

| | |
|-----------------|-----|
| QUALITY SYMBOLS | ▽=0 |
| | ∇=0 |

| GENERAL TOLERANCES (UNLESS SPECIFIED) | |
|--|--------|
| | mm |
| 4 PLACES | ± --- |
| 3 PLACES | ± --- |
| 2 PLACES | ± 0.25 |
| 1 PLACE | ± 0.15 |
| ANGULAR ± 3° | |
| DRAFT WHERE APPLICABLE MUST REMAIN WITHIN DIMENSIONS | |

| | | | |
|-----------------|---|--|----------------|
| DIMENSION STYLE | | SCALE | DESIGN UNITS |
| MM ONLY | | 4:1 | METRIC |
| DRAWN BY | DATE | TITLE | |
| VINCENT | | USB B TYPE CONNETOR KINK TYPE BOARD LOCK | |
| CHECKED BY | DATE | MOLEX INCORPORATED | |
| APPROVED BY | DATE | MATERIAL NO. | DOCUMENT NO. |
| | | SEE LENEND | SDA-67068-**** |
| SIZE | THIS DRAWING CONTAINS INFORMATION THAT IS PROPRIETARY TO MOLEX INCORPORATED AND SHOULD NOT BE USED WITHOUT WRITTEN PERMISSION | | |
| A3 | | | |

| |
|------------------------|
| THIRD ANGLE PROJECTION |
| SHEET NO. 2 OF 4 |