

ITEM	PART#	DESCRIPTION	QTY	UOM
A	5601230600	DURACLIK ISL HOUSING 6P	1	PC
B	5601250600	New 2.0 W/B CONN REC. 6 WAY ISL Gray	1	PC
C	5601240101	DURACLIK ISL crimp receptacle terminal	6	PC
D	--	PAPER PRINTED PAPER WHITE	1	PC

FROM	TO	DESCRIPTION	COLOR
A1	--	1X0.35 SQMM PVC BARE CU BK FLRY-A	BLACK
A2	--	1X0.35 SQMM PVC BARE CU BK FLRY-A	BLACK
A3	--	1X0.35 SQMM PVC BARE CU BK FLRY-A	BLACK
A4	--	1X0.35 SQMM PVC BARE CU BK FLRY-A	BLACK
A5	--	1X0.35 SQMM PVC BARE CU BK FLRY-A	BLACK
A6	--	1X0.35 SQMM PVC BARE CU BK FLRY-A	BLACK

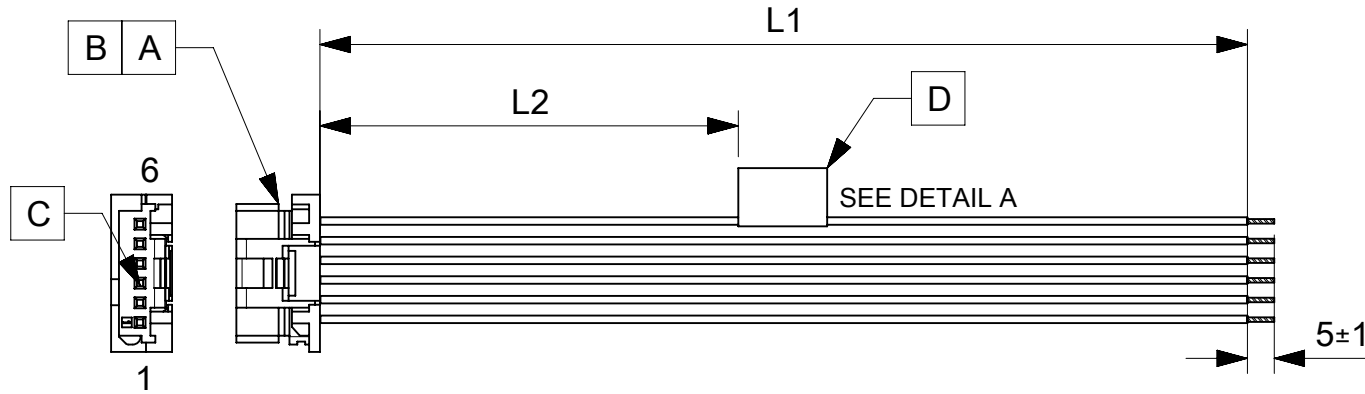


TABLE			
PART NUMBER	L1	L2 (REF)	TITLE
2183231061	150±8	63	DURA-CLIK ISL R-S 6CKT 150MM DISC Sn
2183231062	300±10	138	DURA-CLIK ISL R-S 6CKT 300MM DISC Sn
2183231063	600±10	288	DURA-CLIK ISL R-S 6CKT 600MM DISC Sn

**NOTES**

- Free ends must be stripped, twisted & tinned. The length of finning is 5±1mm. Tinning dia must be 1mm Max.
- Connector view shown is from mating side.
- Label text must be 2mm max. in height with Arial font.
- Label must be wrapped in Flag type on a single cable.

MOLEX P/N  
MOLEX  
BATCH WK/YR  
DETAIL A

REVISION			
DATE	REV	DESCRIPTION	CHANGER
24/05/2021	A	INITIAL RELEASE	ARAJU

FUNCTIONAL SYMBOLS $\frac{F}{A} = 0$ $\frac{F}{E} = 0$ $\frac{F}{P} = 0$ DIVISIONAL SYMBOLS	THIS DRAWING CONTAINS INFORMATION THAT IS PROPRIETARY TO MOLEX ELECTRONIC TECHNOLOGIES, LLC AND SHOULD NOT BE USED WITHOUT WRITTEN PERMISSION		CURRENT REV DESC:	
	DIMENSION UNITS	SCALE	EC NO: 665457	
	mm	NTS	DRWN: ARAJU 2021/05/22	
	GENERAL TOLERANCES (UNLESS SPECIFIED)		CHK'D: RDESAI01 2021/05/28	
ANGULAR TOL ± °		APPR: RDESAI01 2021/05/28		
4 PLACES ±		INITIAL REVISION:		
3 PLACES ±		DRWN: ARAJU 2021/05/22		
2 PLACES ±		APPR: RDESAI01 2021/05/28		
1 PLACE ±		DOCUMENT NUMBER		
0 PLACES ±		2183231061		
DRAFT WHERE APPLICABLE MUST REMAIN WITHIN DIMENSIONS		THIRD ANGLE PROJECTION	DRAWING	SERIES
			A4-SIZE	218323
		MATERIAL NUMBER	CUSTOMER	SHEET NUMBER
		SEE TABLE	GENERAL MARKET	1 OF 1

DOCUMENT STATUS	P1	RELEASE DATE	2021/05/28	13:17:30
-----------------	----	--------------	------------	----------