

### CS Series – Heavy Duty Cam Switches

**Key features:**

- Wide variety of heavy-duty oiltight cam switches
- Operators available up to 12 positions
- Switches made with a double circuit contact block
- Contact blocks rated 600V, 10A
- Ideal for ammeter/voltmeter applications
- Built to order — not available in subcomponents
- UL listed and CSA certified
- Type 4, 13



UL Listed  
File No. E68961



CSA Certified  
File No. LR48366

**Contact Ratings**

Rated Thermal Current		10A				
AC	Break Current	120V/5A	240V/3A	480V/2A	600V/1A	
	Resistive	Break Current	24V/8A	110V/3A	220V/1A	440V/0.45A
DC	Inductive	Break Current	24V/5A	110V/1.2A	220V/0.45A	440V/0.20A
		Make Current (A)	Rated amperage x 1.1			
Electrical Life		500,000 operations minimum (at full rated load)				
Mechanical Life		5,000,000 (at no load)				

**CS Series**

Series	Style	Operator		Maximum Contacts To Be Mounted	Handle Styles
		Cam Angle	Position		
ACSNO		30°	Up to 12	1 to 10 decks; Up to 20 contacts	YB, SB, PB, FB
		45°	Up to 8		
		60°	Up to 6		
		90°	Up to 4		
ACSNK		30°	Up to 12	1 to 10 decks; Up to 20 contacts	HB or standard key
		45°	Up to 8		
		60°	Up to 6		
		90°	Up to 4		
UCSQO		30°	Up to 12	1 to 10 decks; Up to 20 contacts	YB, SB, PB, FB
		45°	Up to 8		
		60°	Up to 6		
		90°	Up to 4		
UCSQM		45° Spring return	Only 3	1 to 3 decks; Up to 6 contacts	YB, SB, PB, FB

1. Do not use spring return (SR) for more than six contacts.  
2. Two identical keys come with ACSNK unit. Specify "H" for handle key option.

Switches & Pilot Devices

Signaling Lights

Relays & Sockets

Timers

Contactors

Terminal Blocks

Circuit Breakers

**Selector Switches (Assembled)**

**Assembled Selector Switches**

**ACSNO - 3 6 6 - ( ) SB - C3013**

**Series**

ACSNO = Standard Cam Switch (30mm)  
 ACSNK = Key Cam Switch (30mm)  
 UCSQO = Cam Switch (5 hole mounting)  
 UCSQM = 3 Position Spring Return Cam Switch (5 hole mounting)

**Number of Levels (Decks)**

1 through 10  
 Note: One level contains two independent contacts.\*

**Number of Positions**

2 through 12

**Angle**

**3** = 30° (12 position max)  
**4** = 45° (8 position max)  
**6** = 60° (6 position max)  
**9** = 90° (4 position max)

**Contact Arrangement**

- For standard contact arrangements, use designations on page 642.
- For custom contact arrangements, omit contact arrangement designation and complete the blank order form on page 777.

**Handle**

**YB** = Knob, Small  
**SB** = Lever, Small  
**PB** = Lever, Large  
**FB** = Knob, Large  
**HB** = Handle Key (ACSNK only)  
**Blank** = Standard Key (ACSNK only)

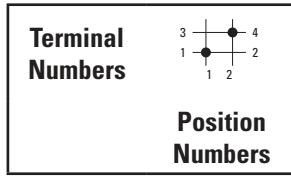
**Spring Return Action**

**Blank**: Maintained  
**RO** = Spring return from left (3 or 4 position, 45° only)  
**OR** = Spring return from right (3 or 4 position, 45° only)  
**RR** = Return from right and left (3 pos, 45° only)

- 1. \*Contact blocks may contain two independent contacts, (a four position switch with four independent contacts only requires two contact blocks).
- 2. \*Caution: switches with 180° or more of rotation may require separate blocks for each contact due to cam overlapping.
- 3. Key retainable in every 45° position (45, 90, 180, 225, 270, 315, 360).

Contact Arrangements

Standard Arrangements



C-1001



C-1002



C-1014



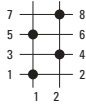
C-1005



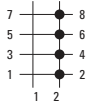
C-1008



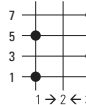
C-2001



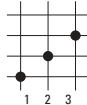
C-2002



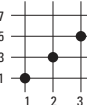
C-2006



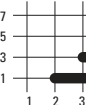
C-2004



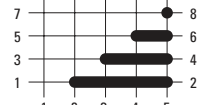
C-2008



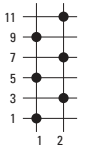
C-2009



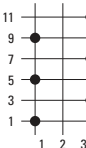
C-2027



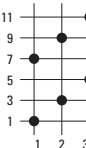
C-3001



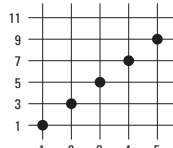
C-3002



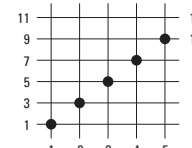
C-3005



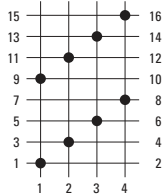
C-3013



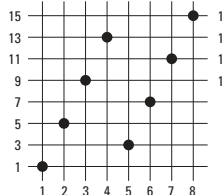
C-3016



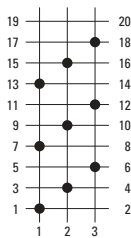
C-4001



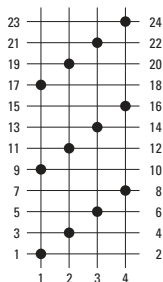
C-4002



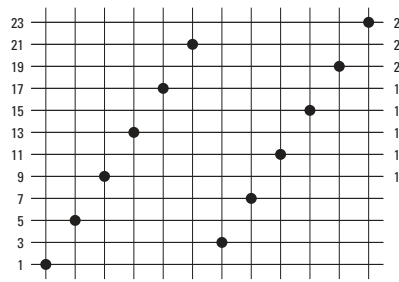
C-5001



C-6001



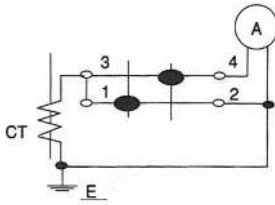
C-6002



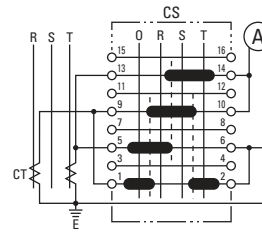
Contact Arrangements continued

Ammeter Switching

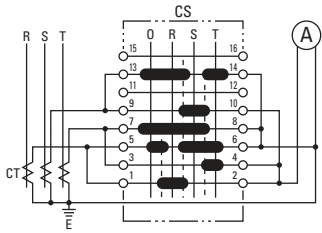
C-1012



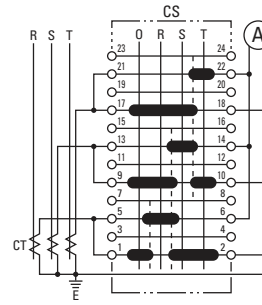
C-4007



C-4003

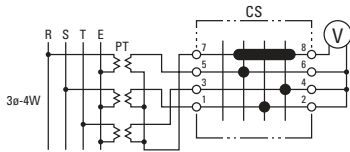


C-6003

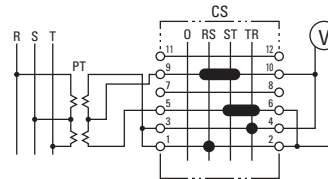


Voltmeter Switching

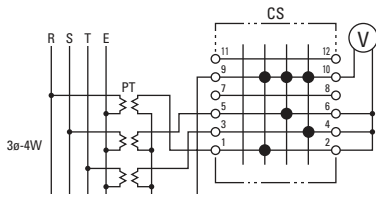
C-2022



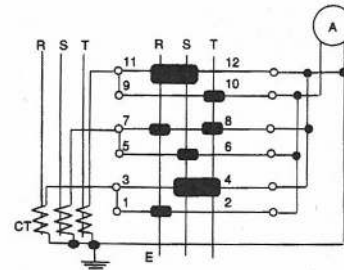
C-3008



C-3009



C-3007



Order Form (Custom Contact Arrangement)

**Series**  
 ACSNO  
 ACSNK  
 UCSQO  
 UCSQM

**\*Number of Decks**  
 Specify Qty = 1, 2, 3, 4, 5, 6, 7, 8, 9, or 10  
 \*Note: One Deck can drive two independent contacts.


**Handle ACSNO, UCSQO, UCSQM:**  
 YB = Knob, Small  
 SB = Lever, Small  
 PB = Lever, Large  
 FB = Knob, Large

**ACSNO:**  
 HB = Handle Key (option)  
 Blank = Standard Key

**Spring Return**  
 Blank = Maintained  
 RO = Spring return from left (3 or 4 position, 45°)  
 OR = Spring return from right (3 or 4 position, 45°)  
 RR = Return from right and left (3 position, 45°)


**Angle**  
 3 = 30°  
 4 = 45°  
 6 = 60°  
 9 = 90°

**UCSQM is available in spring-return version only.**

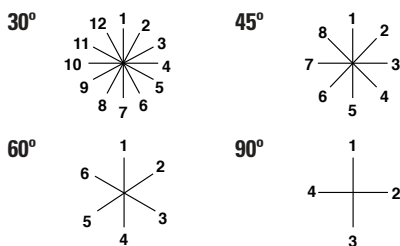
 For handle styles, see page 778.

Contact Arrangement Table

Cams	Terminal Numbers	Position											
		1	2	3	4	5	6	7	8	9	10	11	12
Deck 1	1 and 2												
	3 and 4												
Deck 2	5 and 6												
	7 and 8												
Deck 3	9 and 10												
	11 and 12												
Deck 4	13 and 14												
	15 and 16												
Deck 5	17 and 18												
	19 and 20												
Deck 6	21 and 22												
	23 and 24												
Deck 7	25 and 26												
	27 and 28												
Deck 8	29 and 30												
	31 and 32												
Deck 9	33 and 34												
	35 and 36												
Deck 10	37 and 38												
	39 and 40												

 To specify non-standard arrangements (designation not on preceding pages), fill in this table using the following symbols.  
**X** = Closed contact (break before make) **O** = Open contact **X-X** = Overlapping contact (remain on when switch is moved between two positions)

Specifying Nameplate (Optional)



Specifying Legends

Position

1 \_\_\_\_\_

2 \_\_\_\_\_

3 \_\_\_\_\_

4 \_\_\_\_\_

5 \_\_\_\_\_

6 \_\_\_\_\_



If no engraving information is provided, a blank nameplate will be supplied.

1 \_\_\_\_\_

2 \_\_\_\_\_

3 \_\_\_\_\_

4 \_\_\_\_\_

5 \_\_\_\_\_

6 \_\_\_\_\_

Accessories — CS Series

Replacement Handles



					
Part Number	CSH-YB	CSH-SB	CSH-PB	CSH-FB	CSH-H2B
Dimensions	0.79"D x 1.61"H	0.79"D x 1.97"H	1.58"D x 1.97"H	1.58"D x Ø 1.97"	0.95"D x 2.28"H
Applicable Models	ACSNO, UCSQO, UCSQM				ACSNK

Replacement Nameplates

Size & Shape □ 2.52" (64mm) Black Aluminum			
Part Number	CQ	CQM	CQN
Applicable Models	UCSQO	UCSQM	ACSNO, ACSNK

- 1. Extra cost for engraving, 3/16" min. letter height, Legends maximum ten characters.
- 2. Blank nameplates are supplied with all cam switches (they need not be ordered separately).

Wiring Clips

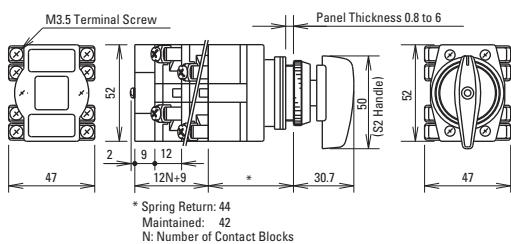
Part Number	Contact Block Jumpers
CJ-1 	Between decks
CJ-2 	Same deck

Replacement Keys

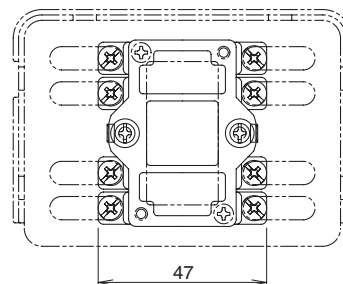
Part Number	Description
K301 	Pair of keys (#301)

Dimensions/Terminal Arrangements/Mounting Holes

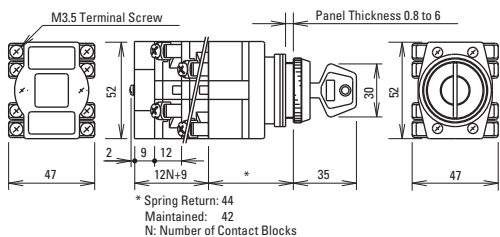
ACSNO



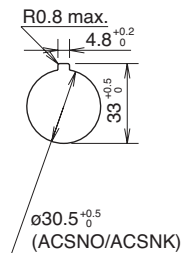
Terminal Arrangement



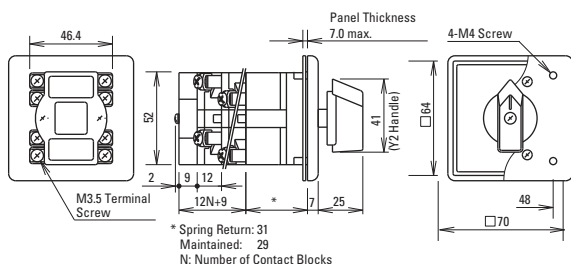
ACS NK



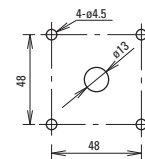
Mounting Holes



UCSQO



UCSQO  
UCSQM



UCSQM

