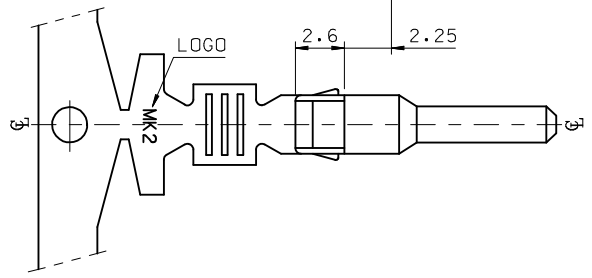
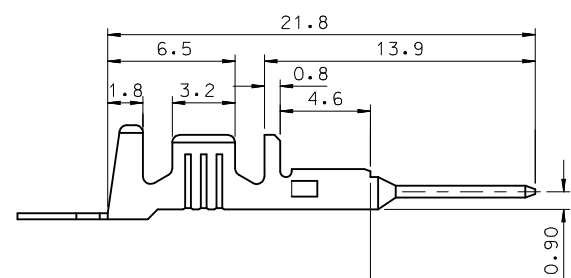


- NOTES.
1. MATERIAL : ⓄBRASS, PRE-TIN PLATED
  2. FINISH : 0.8~1.8μm,Tin(Sn) plating overall  
0.3~0.8μm.Copper(Cu) plating
  3. PRODUCT SPECIFICATION : PS-35150-001, PS-35180-002  
PS-35180-003, PS-35182-003, PS-35524-001
  4. CRIMPING SPECIFICAITON : CS-35745-001
  5. RECOMMENDED LENGTH OF WIRE STRIP IS 4.0~4.8mm
  6. APPLICABLE WIRE SIZE : AWG #20+#20  
AWG #20+#18  
AWG #18+#18



|   |                               |                                       |  |                            |   |                              |                                       |  |
|---|-------------------------------|---------------------------------------|--|----------------------------|---|------------------------------|---------------------------------------|--|
| REVISED<br>EC NO: KOR2009-0151<br>DRWN: JHPARK01 2009/05/18<br>CHKD: WYANG 2009/06/18<br>APPR: YUNSIKKIM 2009/07/01 | QUALITY SYMBOLS<br>▽=0<br>∇=0 | GENERAL TOLERANCES (UNLESS SPECIFIED) |  | DIMENSION STYLE<br>MM ONLY | SCALE<br>4:1  | DESIGN UNITS<br>METRIC       | THIRD ANGLE PROJECTION                |  |
|   |                               |                                       | mm   | INCH                       | DRAWN BY<br>JS.KANG   | DATE<br>1998/01/19           | TITLE<br>.070 MALE TERMINAL-A (LARGE) |  |
|   |                               | 4 PLACES                              | ± ---  | ± ---                      | CHECKED BY<br>BK. CHOI  | DATE<br>1998/01/19           |                                       |  |
|   |                               | 3 PLACES                              | ± ---  | ± ---                      | APPROVED BY<br>CW. LEE  | DATE<br>1998/01/19           |                                       |  |
|   |                               |                                       | 2 PLACES   | ± 0.2                      | ± ---   |                              |                                       |  |
|   |                               |                                       | 1 PLACE  | ± 0.3                      | ± ---   |                              |                                       |  |
|   |                               |                                       | ANGULAR ± 1 °  |                            | MATERIAL NO.<br>357450310   | DOCUMENT NO.<br>SD-35745-002 | SHEET NO.<br>1 OF 01                  |  |
|   |                               |                                       | DRAFT WHERE APPLICABLE MUST REMAIN WITHIN DIMENSIONS |                            | THIS DRAWING CONTAINS INFORMATION THAT IS PROPRIETARY TO MOLEX INCORPORATED AND SHOULD NOT BE USED WITHOUT WRITTEN PERMISSION |                              |                                       |  |