

HONEYWELL PART NUMBER
-

REV	DOCUMENT	CHANGED BY	CHECK
E	0046882	DSK 12DEC08	RS

SPECIFICATION SHEET 50BFA103-00

NEI PT.NO. 50BFA103

ELECTRICAL PARAMETERS

RESISTANCE : 10,000Ω ± 10%

LINEARITY : ±1.0% IND.

ELEC. TRAVEL : 295 (MIN)

ELEC. OVER TRAVEL: 5°MIN EACH END

CONTINUITY TRAVEL : ELECTRICAL TRAVEL+ELECTRICAL OVERTRAVEL

INSULATION RESISTANCE : 1000 MEG Ω MINIMUM @500VDC

OUTPUT SMOOTHNESS : 0.2%

DIELECTRIC WITH-STANDING VOLTAGE : 750 VOLTS RMS

END VOLTAGE : 0.01% MIN; 1.64% MAX

NO. OF SECTIONS _____

MECHANICAL PARAMETERS

MECHANICAL TRAVEL: 360° CONTINUOUS

STARTING TORQUE/FORCE : 0.8 OZ-IN.MAX.

RUNNING TORQUE/FORCE : 0.8 OZ-IN.MAX.

LATERAL RUNOUT : _____

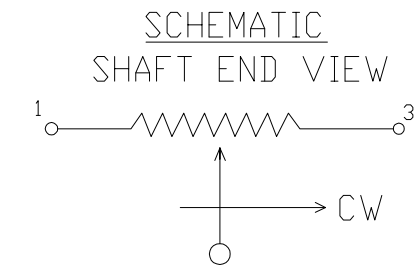
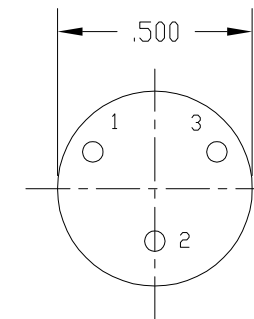
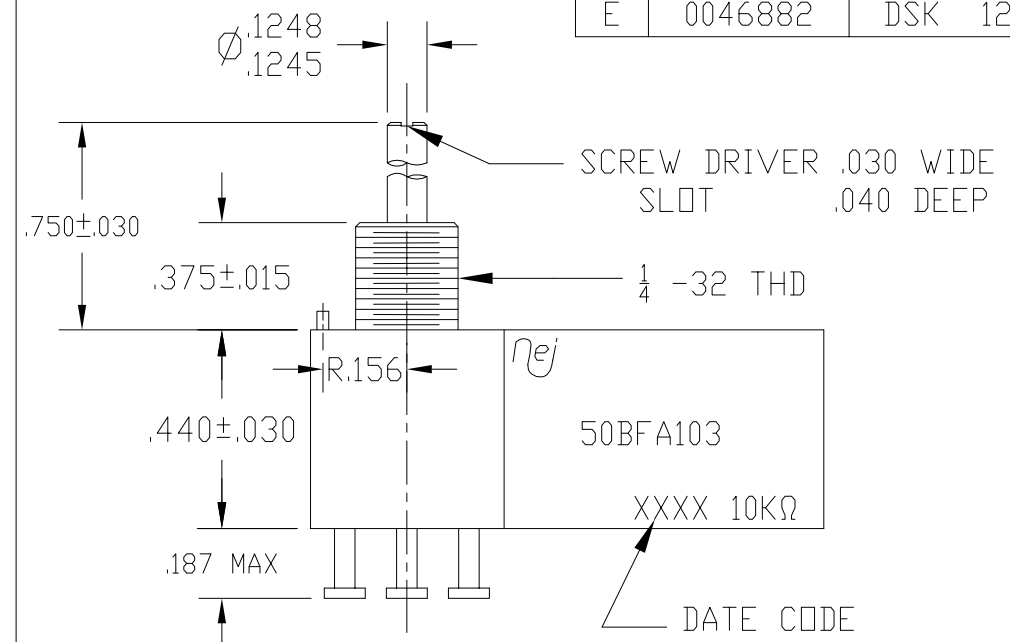
PILOT RUNOUT : _____

SHAFT RUNOUT: .002 IN./IN. OF SHAFT LENGTH

END PLAY : .005" TIR MAX.

RADIAL PLAY : .003" TIR MAX.

STOP STRENGTH : _____



SPECIAL INSTRUCTIONS

NOTES

- 1 - MARK AS SHOWN USING TOOL NO. 2-802-6196
- 2 - UNIT TO BE SUPPLIED WITH HEX NUT PS57-109
LOCK WASHER PS40-106

DESIGN UNITS: INCH TOLERANCES UNLESS NOTED:	DRAWN	DSK	12DEC08	Honeywell				
	CHECK	RS	12DEC08					
NO PLACES X ± 0.400 ONE PLACE .X ± 0.03 TWO PLACE .XX ± 0.015 THREE PLACE .XXX ± 0.005 ANGLES X ± 3.0°	THIS DRAWING COVERS A PROPRIETARY ITEM AND IS THE PROPERTY OF HONEYWELL. THIS DRAWING IS NOT TO BE COPIED OR USED WITHOUT THE PERMISSION OF HONEYWELL.			TITLE SPECIFICATION SHEET FOR 50BFA103				
THIRD ANGLE PROJECTION 	INTERPRET PER ASME Y14.5M-1994 OTHER HONEYWELL ENGINEERING STANDARDS MAY APPLY			SIZE	TYPE	CAGE CODE	DRAWING NAME	REV
	AUTOCAD 2D			B	E	-	50BFA103-00	E
				SCALE	NONE		SHEET	1 OF 1