

PCB LAYOUT: COMPONENT SIDE
RECOMENDED PCB THICKNESS: .062/1.57 Max.

NOTES:

- HOSING MATERIAL: GLASS FILLED LIQUID CRYSTAL POLYMER, UL 94V-0, COLOR: BLACK
TERMINAL MATERIAL: HIGH COPPER ALLOY
- FINISH:
OPTION 1: TIN OVER NICKEL OVERALL
OPTION 2: SELECT 15MICROINCH GOLD AND SELECT MATTE TIN OVER NICKEL.
OPTION 3: SELECT 30MICROINCH GOLD AND SELECT MATTE TIN OVER NICKEL.
- PRODUCT SPECIFICATION : 2064600000-PS
- TRAY PACK : 2068320000-PK
TAPE REEL PACK : 2068320001-PK
- MATE WITH RECEPTACLE 206461
- THIS PART CONFORMS TO CLASS 'B' REQUIREMENTS OF COSMETIC SPECIFICATION PS-45499-002.

DIMENSION UNITS		SCALE	CURRENT REV DESC:							
mm		5:1								
GENERAL TOLERANCES (UNLESS SPECIFIED)			<p>molex</p> <p>V HDR ASSY BANDO MICRO-FIT + SOLUTION</p> <p>PRODUCT CUSTOMER DRAWING</p>							
ANGULAR TOL $\pm 0.5^\circ$										
4 PLACES \pm										
3 PLACES \pm										
2 PLACES ± 0.25										
1 PLACE ± 0.36										
0 PLACES \pm			<p>INITIAL REVISION:</p> <p>DRWN: SMAHAJANSHET 2018/05/08</p> <p>APPR: NCSR 2019/04/02</p>							
DRAFT WHERE APPLICABLE MUST REMAIN WITHIN DIMENSIONS		THIRD ANGLE PROJECTION	DRAWING	SERIES	MATERIAL NUMBER	CUSTOMER	DOCUMENT NUMBER	DOC TYPE	DOC PART	REVISION
			A3-SIZE	206832	SEE TABLE	GENERAL MARKET	2068320000-SD	PSD	000	B
SHEET NUMBER		1 OF 3								

TIN PLATING					
VRT HDR ASSY PN	CKT	A	B	PK SPEC	NOTE
206832-0201	2	3.85	NA	2068320000-PK	TRAY PACK
206832-0401	4	6.85	3		
206832-0601	6	9.85	6		
206832-0801	8	12.85	9		
206832-1001	10	15.85	12		
206832-1201	12	18.85	15		
206832-1401	14	21.85	18		
206832-1601	16	24.85	21		
206832-1801	18	27.85	24		
206832-2001	20	30.85	27		
206832-2201	22	33.85	30		
206832-2401	24	36.85	33		


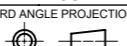
TIN PLATING					
VRT HDR ASSY PN	CKT	A	B	PK SPEC	NOTE
206832-0221	2	3.85	NA	2068320001-PK	TAPE REEL PACK
206832-0421	4	6.85	3		
206832-0621	6	9.85	6		
206832-0821	8	12.85	9		
206832-1021	10	15.85	12		
206832-1221	12	18.85	15		
206832-1421	14	21.85	18		
206832-1621	16	24.85	21		
206832-1821	18	27.85	24		
206832-2021	20	30.85	27		
206832-2221	22	33.85	30		
206832-2421	24	36.85	33		

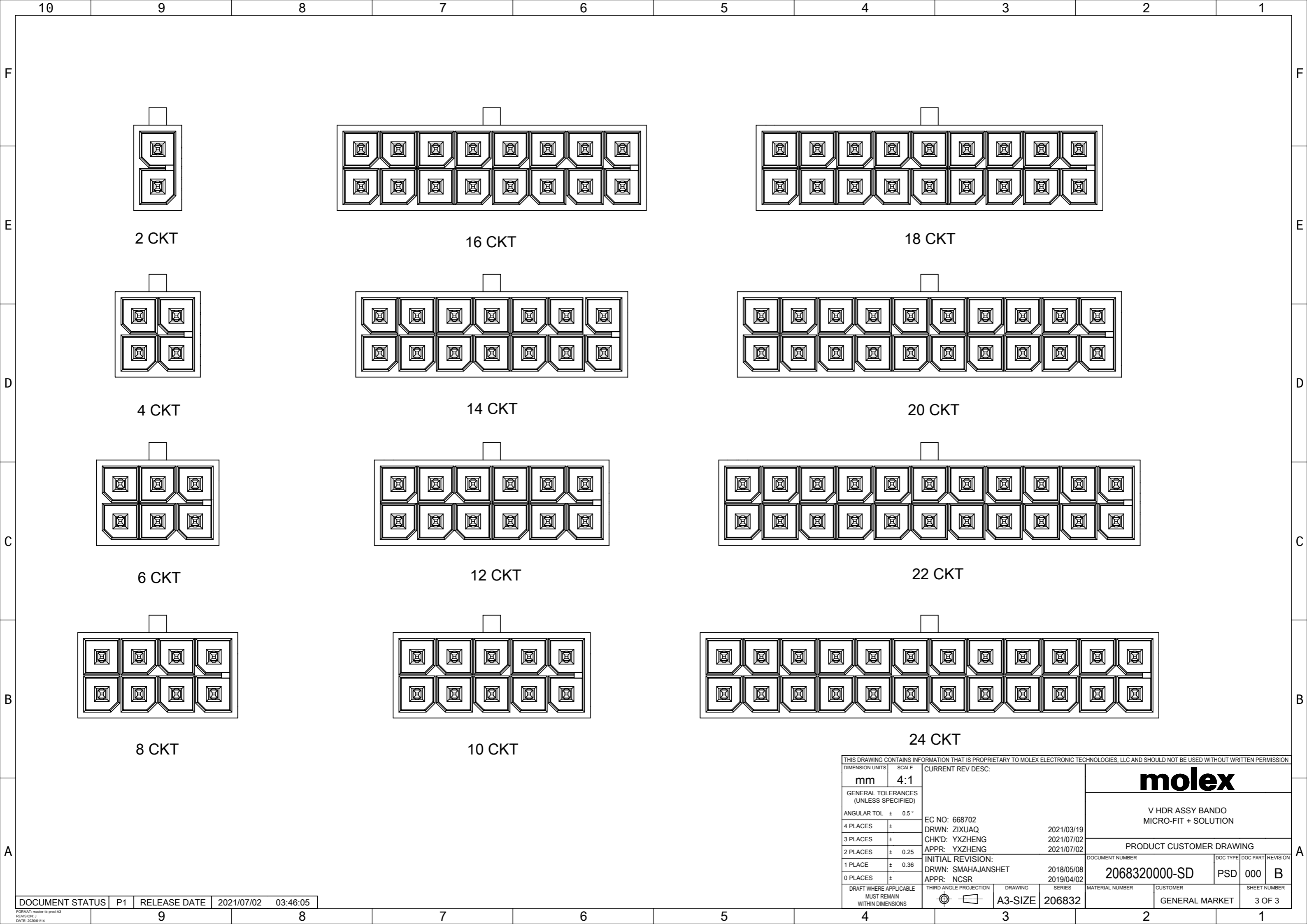
15 MICROINCH GOLD					
VRT HDR ASSY PN	CKT	A	B	PK SPEC	NOTE
206832-0202	2	3.85	NA	2068320000-PK	TRAY PACK
206832-0402	4	6.85	3		
206832-0602	6	9.85	6		
206832-0802	8	12.85	9		
206832-1002	10	15.85	12		
206832-1202	12	18.85	15		
206832-1402	14	21.85	18		
206832-1602	16	24.85	21		
206832-1802	18	27.85	24		
206832-2002	20	30.85	27		
206832-2202	22	33.85	30		
206832-2402	24	36.85	33		

15 MICROINCH GOLD					
VRT HDR ASSY PN	CKT	A	B	PK SPEC	NOTE
206832-0222	2	3.85	NA	2068320001-PK	TAPE REEL PACK
206832-0422	4	6.85	3		
206832-0622	6	9.85	6		
206832-0822	8	12.85	9		
206832-1022	10	15.85	12		
206832-1222	12	18.85	15		
206832-1422	14	21.85	18		
206832-1622	16	24.85	21		
206832-1822	18	27.85	24		
206832-2022	20	30.85	27		
206832-2222	22	33.85	30		
206832-2422	24	36.85	33		

30 MICROINCH GOLD					
VRT HDR ASSY PN	CKT	A	B	PK SPEC	NOTE
206832-0203	2	3.85	NA	2068320000-PK	TRAY PACK
206832-0403	4	6.85	3		
206832-0603	6	9.85	6		
206832-0803	8	12.85	9		
206832-1003	10	15.85	12		
206832-1203	12	18.85	15		
206832-1403	14	21.85	18		
206832-1603	16	24.85	21		
206832-1803	18	27.85	24		
206832-2003	20	30.85	27		
206832-2203	22	33.85	30		
206832-2403	24	36.85	33		

30 MICROINCH GOLD					
VRT HDR ASSY PN	CKT	A	B	PK SPEC	NOTE
206832-0223	2	3.85	NA	2068320001-PK	TAPE REEL PACK
206832-0423	4	6.85	3		
206832-0623	6	9.85	6		
206832-0823	8	12.85	9		
206832-1023	10	15.85	12		
206832-1223	12	18.85	15		
206832-1423	14	21.85	18		
206832-1623	16	24.85	21		
206832-1823	18	27.85	24		
206832-2023	20	30.85	27		
206832-2223	22	33.85	30		
206832-2423	24	36.85	33		

THIS DRAWING CONTAINS INFORMATION THAT IS PROPRIETARY TO MOLEX ELECTRONIC TECHNOLOGIES, LLC AND SHOULD NOT BE USED WITHOUT WRITTEN PERMISSION																	
DIMENSION UNITS		SCALE		CURRENT REV DESC:													
mm		1:1															
GENERAL TOLERANCES (UNLESS SPECIFIED)				EC NO: 668702 DRWN: ZIXUAQ 2021/03/19 CHK'D: YXZHENG 2021/07/02 APPR: YXZHENG 2021/07/02 INITIAL REVISION: DRWN: SMAHAJANSHET 2018/05/08 APPR: NCSR 2019/04/02						V HDR ASSY BANDO MICRO-FIT + SOLUTION							
ANGULAR TOL ± 0.5°										PRODUCT CUSTOMER DRAWING							
4 PLACES ±										DOCUMENT NUMBER		DOC TYPE		DOC PART		REVISION	
3 PLACES ±										2068320000-SD		PSD		000		B	
2 PLACES ± 0.25										MATERIAL NUMBER		CUSTOMER				SHEET NUMBER	
1 PLACE ± 0.36										SEE TABLE		GENERAL MARKET				2 OF 3	
0 PLACES ±																	
DRAFT WHERE APPLICABLE MUST REMAIN WITHIN DIMENSIONS				THIRD ANGLE PROJECTION		DRAWING		SERIES									
						A3-SIZE		206832									



2 CKT

16 CKT

18 CKT

4 CKT

14 CKT

20 CKT

6 CKT

12 CKT

22 CKT

8 CKT

10 CKT

24 CKT

THIS DRAWING CONTAINS INFORMATION THAT IS PROPRIETARY TO MOLEX ELECTRONIC TECHNOLOGIES, LLC AND SHOULD NOT BE USED WITHOUT WRITTEN PERMISSION														
DIMENSION UNITS		SCALE		CURRENT REV DESC:						molex				
mm		4:1												
GENERAL TOLERANCES (UNLESS SPECIFIED)				EC NO: 668702 DRWN: ZIXUAQ 2021/03/19 CHK'D: YXZHENG 2021/07/02 APPR: YXZHENG 2021/07/02 INITIAL REVISION: DRWN: SMAHAJANSHET 2018/05/08 APPR: NCSR 2019/04/02						PRODUCT CUSTOMER DRAWING				
ANGULAR TOL		± 0.5°								DOCUMENT NUMBER		DOC TYPE	DOC PART	REVISION
4 PLACES		±								2068320000-SD		PSD	000	B
3 PLACES		±								MATERIAL NUMBER		CUSTOMER		SHEET NUMBER
2 PLACES		± 0.25								206832		GENERAL MARKET		3 OF 3
1 PLACE		± 0.36								THIRD ANGLE PROJECTION	DRAWING	SERIES		
0 PLACES		±			A3-SIZE	206832								
DRAFT WHERE APPLICABLE MUST REMAIN WITHIN DIMENSIONS														